

Pennsylvania
Academy of the Fine Arts

Celebrating 200 Years



06-07







The Pennsylvania Academy of the Fine Arts has been training America's best artists for more than 200 years. Steeped in history, the Academy has a long list of famous alumni and a current faculty of working professional artists who form a continuous tradition of excellence in the studio arts of drawing, painting, printmaking, and sculpture.

Our students are passionate about their craft and about their future as professional artists. We teach technique—and the knowledge and skill to become the artist you want to be. The Academy is a unique community of working artists combined with a world-class collection of American art, located in one of the largest and liveliest art communities in the country.

Our students exhibit as professionals—often while they are still in school. Our graduates have careers as artists all over the country and around the world. If you are serious about being an artist, come visit the Academy and join the tradition.

Degree Programs

Undergraduate Programming 2

The Certificate Program

Certificate Program Areas of Concentration

The Bachelor of Fine Arts with University of Pennsylvania

Graduate Programming 8

Post-baccalaureate Program

Master of Fine Arts Program

Services and Facilities

Student Services and Activities 10

Studios and Facilities 12

Museums and Galleries 14

Faculty and Alumni

Faculty 16

Alumni 19

Visit the Academy

Visit Us in Philadelphia 20

Admissions Requirements 22

Contact Us 24



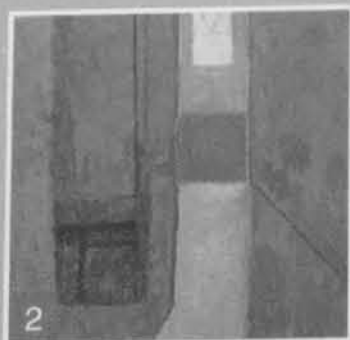
The Certificate Program



The four-year Certificate Program is the most historic of the Academy's academic programs. It is the finest training available in the studio fine arts of drawing, painting, printmaking, and sculpture.

The Certificate Program emphasizes excellence in studio art-making skills and abilities, and drawing is emphasized at all levels of the curriculum. In the first two years, students receive a thorough training in traditional and contemporary techniques of drawing, painting, printmaking, and sculpture. Under the mentorship of master artists, students take classes in cast drawing, life drawing and painting, anatomy, color, still life, figure modeling, perspective, etching, woodcut, and art history.

In their second year, students choose to focus study in the majors of drawing, painting, printmaking, and sculpture. Third- and fourth-year students receive private studios while continuing an intensive mentoring relationship with critics chosen from a large faculty of professional working artists, representing a wide range of aesthetic viewpoints.



Graduating students of the MFA Program and Certificate students at the end of their third and fourth years are eligible to participate in the *Annual Student Exhibition*—an opportunity for students to exhibit a body of work in the Samuel M.V. Hamilton Building and gain experience in planning and installing a show. The exhibition is a popular cultural event in Philadelphia, and attracts a large number of art collectors, gallery owners, and art professionals from around the Philadelphia region. Certificate students are also eligible to win open school prizes at the exhibition. Totalling more than \$50,000, these awards include the prestigious Cresson, Scheidt, and Ware Memorial Travel Scholarships.



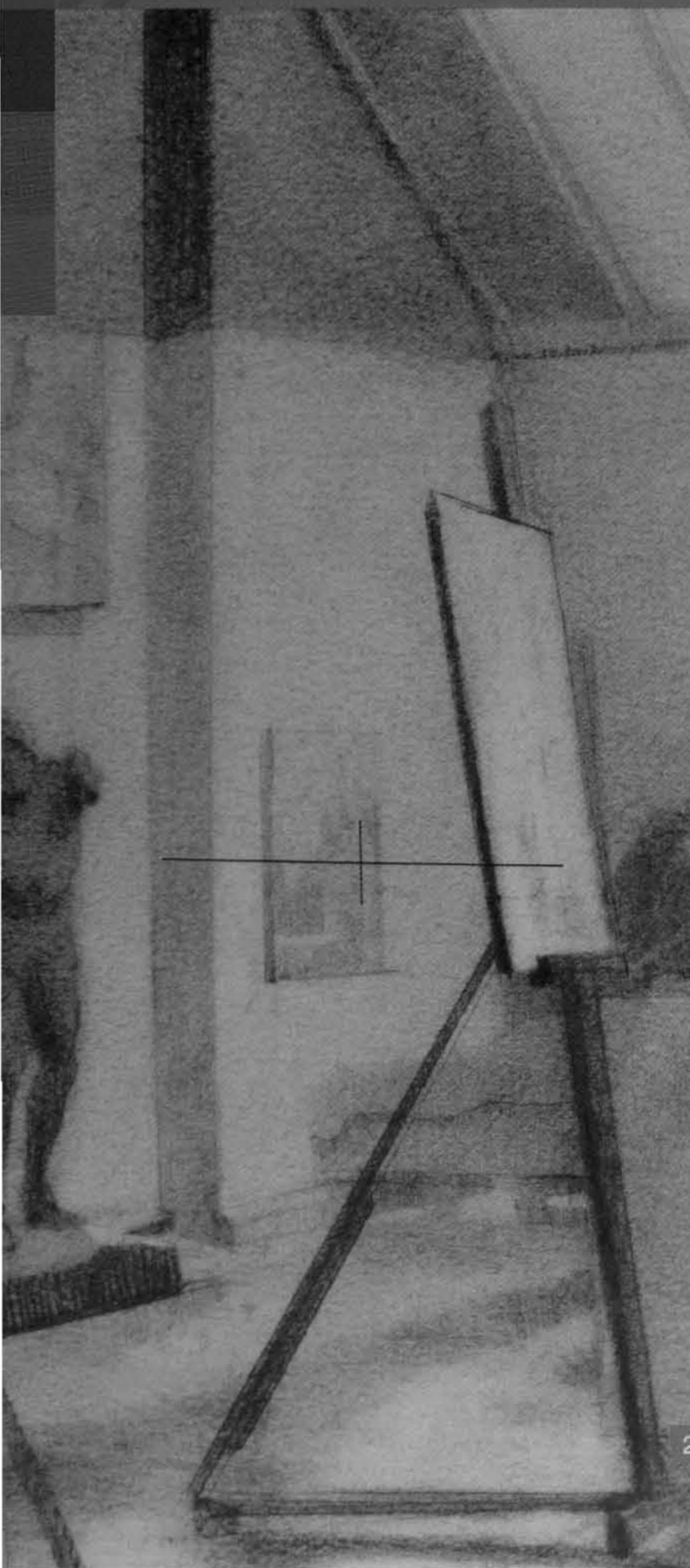
The Annual Student Exhibition



- 1 Mary Elizabeth Wagner, *Certificate*
- 2 W. Benjamin Smith, *Certificate*
- 3 Benjamin Volta, *Certificate*
- 4 Unknown, *Certificate*
- 5 Jenny Kanzler, *MFA*



Certificate Program Areas of Concentration



For 200 years, the Academy has produced some of the finest American artists. Academy students join a lineage that traces its origins from teacher to student from as far back as Thomas Eakins, the French Academy, and the first academy of 16th-century Italy. At the same time, Academy students create work in a wide range of styles and techniques that reflect the diversity of contemporary art making practice.

The Certificate Program offers majors in drawing, painting, printmaking, and sculpture. In the first-year curriculum, students take courses that introduce each of the majors. This creates a strong foundation for further study. Students declare their major in the second year.

DRAWING

Drawing is the unifying feature of all the majors at the Academy. Majors build on the skills acquired from figure and observational drawing to develop the expressive possibilities of drawing and related works on paper. A unique aspect of drawing at the Academy is its emphasis on utilizing the Academy's famous collection of plaster casts and master sculpture. Students learn the techniques of rendering form in light and shade and depicting accurate shape and proportion. The goal is to develop a personal style and high level of skill in drawing and related works on paper.

PAINTING

During the second year, painting majors study the methods and materials of traditional and contemporary painting including life painting, still life painting, portrait, landscape, figure composition, and drawing in a variety of media. Majors are encouraged to take electives from other majors and art history seminars to broaden their understanding of issues in painting. Advanced students pursue individual projects under the mentorship of faculty critics. Creativity is enhanced by a solid basis of information and skill-based training. Each painter is given the tools to explore a personal vision that may take a variety of directions.

PRINTMAKING

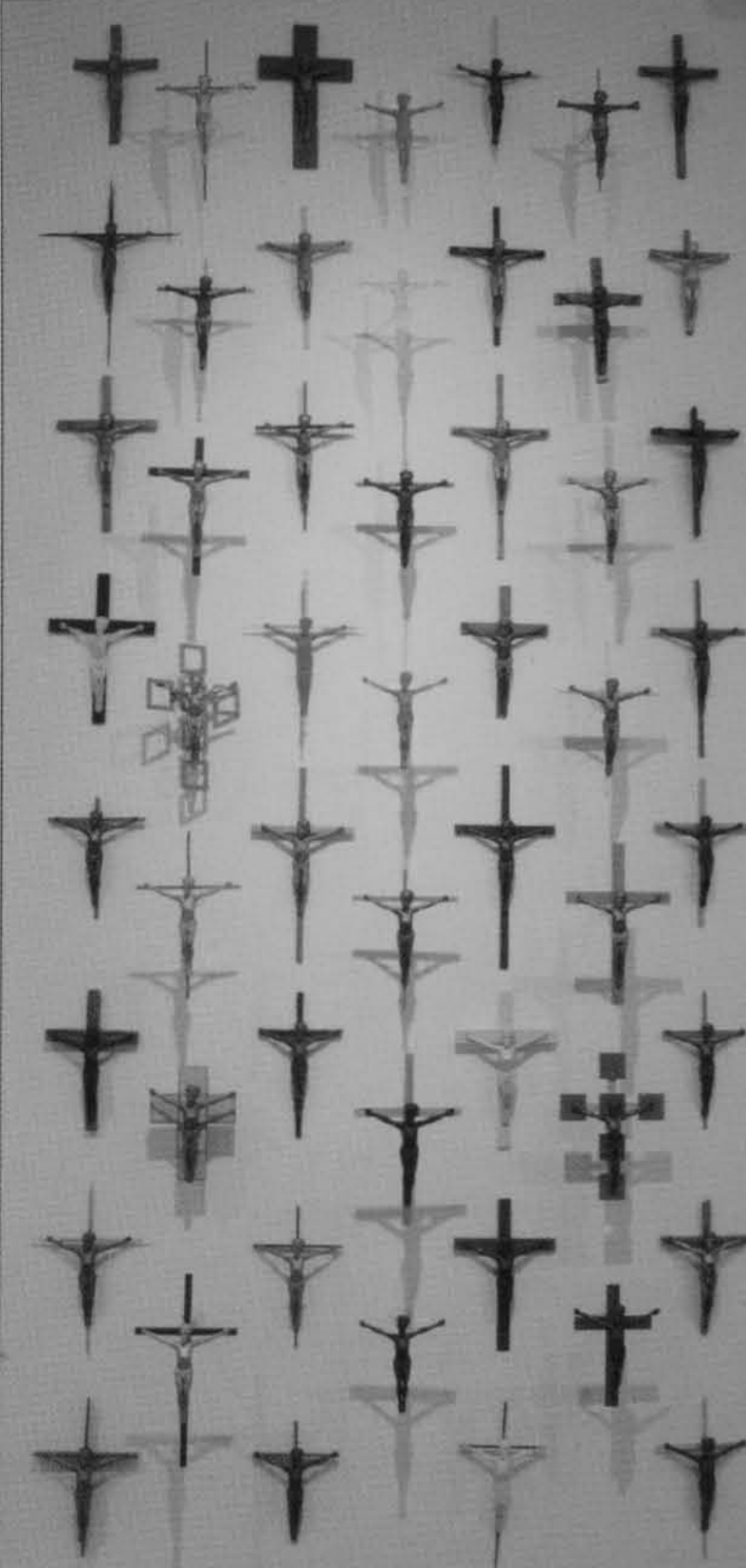
After introductory courses of the first year, students take courses in the disciplines of intaglio, lithography, woodcut/relief, book-arts, silkscreen, and digital media. Printmaking includes both traditional and experimental approaches to image making and merges the conceptual with the technical to produce works on paper with relevance and significance to contemporary art practice. Student work is acquired for the student archives study collection, to be exhibited as examples of specific techniques and inspiration. Printmaking majors create works on paper that have a personal viewpoint expressed with technical excellence.

SCULPTURE

First-year students are introduced to anatomy, life modeling, and 3D form making. Students focus on the relationships between sculptural process and expressive issues of composition and content. Students learn techniques of metal and woodworking, mixed-media fabrication, and figure modeling. Advanced students pursue independent projects under the guidance of faculty mentors, using the well-equipped wood, metal, and clay modeling studios and foundry. Sculpture students work in a wide array of styles and mediums to produce works of individual beauty and technical mastery.



3
4



5



- 1 Patrick Crofton, *Certificate*
- 2 David Sigman, *Certificate*
- 3 Sarah Hunter, *Certificate*
- 4 Febo Troilo, *Certificate*
- 5 Christopher Tietjen, *Certificate*



The Coordinated BFA with the University of Pennsylvania

For more than 70 years, the Pennsylvania Academy of the Fine Arts and the University of Pennsylvania (Penn) have cooperatively offered a unique combination of nationally renowned studio art training and Ivy League academics.

Academy students can obtain a Bachelor of Fine Arts (BFA) from the University of Pennsylvania through the Coordinated BFA Program. Students may apply to Penn at the same time as their application to the Academy, or any time during or after completing Certificate requirements. All academic preparation prior to the Academy will be reviewed for admission to Penn. Students admitted to the BFA Program may begin studies at Penn after completing their first year of study at the Academy. Penn will accept Academy credits to fulfill studio credit requirements for the BFA and will not accept transfer of credits from another institution.

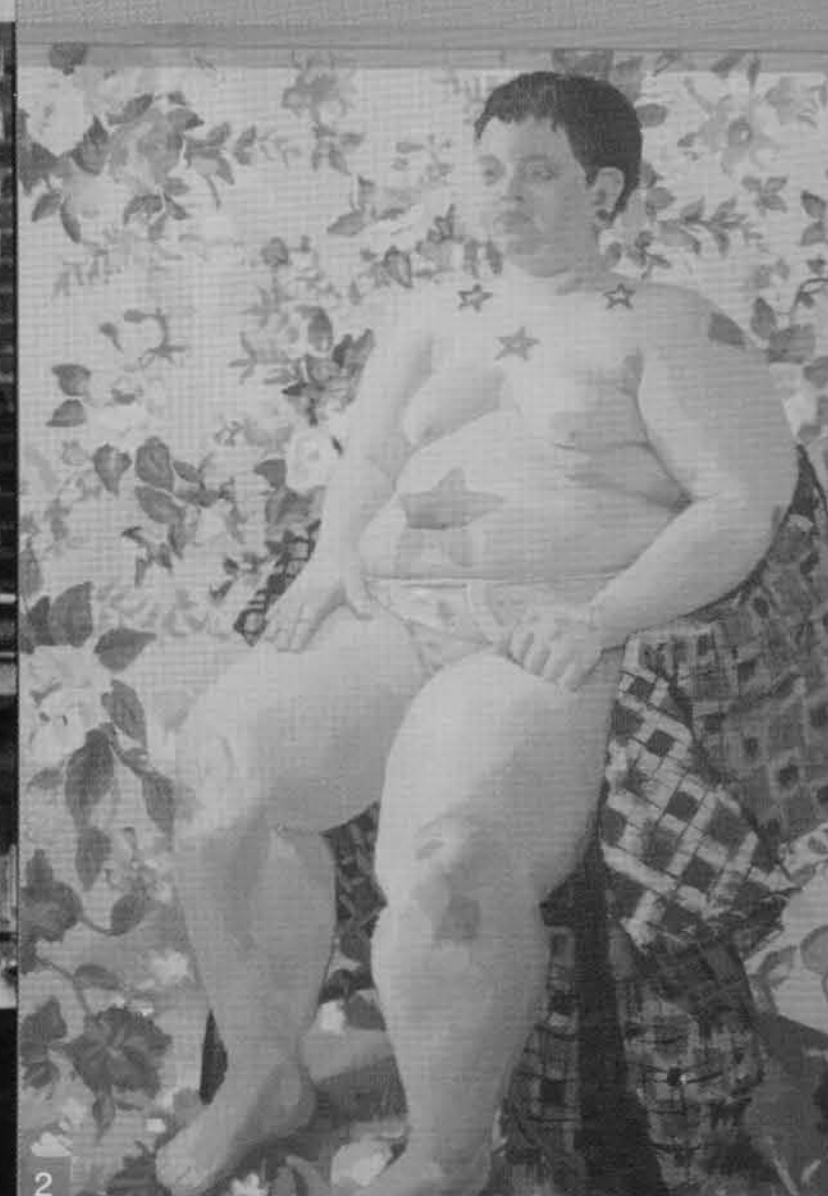
This self-paced program offers students maximum flexibility in their academic pursuits. By completing the Certificate Program at the Academy and the BFA Program from Penn, students gain the studio art skills and independence of the private studio experience and can participate in the *Annual Student Exhibition*. The liberal arts courses of the BFA degree can provide additional support for careers in museum or gallery operation and arts administration. Many BFA students go on to graduate school to obtain a Master of Fine Arts (MFA) or complete art teacher certification programs.



THERE ARE THREE WAYS TO OBTAIN THE PENN BFA:

- 1 Take the required 16 classes from the University of Pennsylvania while completing the required 120 credits of studio courses at the Academy to obtain both a Certificate and a BFA. Many Academy students complete the BFA in five academic years.
- 2 First complete the requirements for a Certificate at the Academy, then take the required 16 Penn courses to complete the BFA degree program.
- 3 Complete the first three years (90 credits) of the Academy Certificate Program, complete the 16 required courses from Penn, and receive *only* the BFA degree from the University of Pennsylvania.

- 1 Jeanine LeClair, *Certificate*
- 2 Lauren Halborn, *Certificate*
- 3 Justin Duffus, *Certificate*



2
3





The Graduate Programs

POST-BACCALAUREATE PROGRAM

The Post-baccalaureate Program is a one-year, full-time program of intense studio work designed to address the needs of those with an undergraduate degree and substantial studio experience who need an additional year of studio work to develop a strong, cohesive, and competitive body of work; students requiring a year of intensive studio work prior to beginning a graduate-level program; or individuals with a degree in art who wish to pursue work in a different medium. It is an excellent program for liberal arts graduates, educators, or mid-career professionals who may wish to reinvigorate their studio practice while obtaining 30 credits of graduate-level studio art experience.

Post-baccalaureate students are given a private studio in the Samuel M.V. Hamilton Building. A personal vision is encouraged through extensive mentoring from Post-baccalaureate graduate faculty. Students explore issues in contemporary art through participation in critical seminar classes and develop art-making skills by taking graduate level classes in drawing and painting. Students who desire expert technical instruction in drawing, painting, printmaking, and sculpture, also may take courses in the Certificate Program.



MASTER OF FINE ARTS PROGRAM

The Master of Fine Arts Program is an intensive, two-year studio experience that involves daily interaction with an outstanding faculty of resident and visiting artists. The curriculum includes regular private and group critiques, seminars in critical readings, a written thesis component, and participation in drawing and painting classes taught by graduate faculty. The program is focused on the traditional studio arts of drawing, painting, printmaking, and sculpture, but within these disciplines displays a considerable diversity in approach.

During both years of study, MFA students enroll in drawing and seminar classes. Students also may elect to take classes within the Academy's Certificate Program, which emphasizes working from life and the acquisition of traditional art making skills. All students are provided a private studio in the new Samuel M.V. Hamilton Building and receive extensive mentoring from a large faculty representing a wide range of studio practice. The Studio Critique system allows students to choose three critics from the visiting and resident faculty. During the second year of the program, every student is required to complete a written thesis and to submit work for a final jury review by graduate faculty. The program of study culminates in the *Annual Student Exhibition* in the galleries of the Samuel M.V. Hamilton Building.

1 Aleksandre Vasic Lalovic, MFA

2 Jenny Kanzler, MFA

3 Tae Sik Kong, MFA



2

3





Student Services and Activities



The Academy's students are committed and promising art students from across the country and around the globe. They come from diverse backgrounds—directly from high school, transferring from college programs, or after careers in medicine, architecture, or business. MFA students represent college graduates from all walks of life. At the Academy, there is a common passion for studying the tradition of fine arts, and the breadth of student experience provides a rich mixture of perspectives to enhance the rigorous curriculum.

STUDENT SERVICES

The Student Affairs office provides services that balance and complement students' educational and studio experiences. Whether through extracurricular programming, lunchtime workshops, off-campus excursions, or counseling support, Student Affairs helps make the Academy experience interesting, supportive, and dynamic.

STUDENT ACTIVITIES

The city is the Academy's campus! Philadelphia has a wide array of art, culture, entertainment, and educational resources that are yours for the taking. In addition to offerings throughout the city and region, students enjoy a number of activities at the Academy, including events such as the autumn hayride, holiday print sale, grocery bingo, open studio night, drawing marathons, movie nights, student group critiques, faculty studio tours, and bus trips to New York City and Washington D.C. As members of a small community, students also have the opportunity to initiate programs and events.

CAREER SERVICES

The Academy offers lectures, panels, and workshops providing insight and information on careers in the arts. Topics include: museum curation and conservation; commissions; grants and funding; documenting your work; art consulting; framing; legal issues in the arts; college and university teaching; apprenticeships; and gallery networking.

ACADEMIC ADVISING

Every incoming student is assigned a faculty advisor who shepherds a small group of students through the first-year experience. As students declare a major, department chairs and designated faculty within each department advise upper-level students.

HEALTH SERVICES

Routine health services are available to Academy students at Jefferson Family Medical Associates, which also can provide referrals to specialists.

COUNSELING SERVICES

The Student Counseling Program is provided by Penn Behavioral Health, which offers individual counseling and referrals as well as educational workshops and special topic discussion groups.

HOUSING

Students have a variety of independent living arrangements throughout the city and region. The Student Affairs office assists students in finding roommates and available listings.





Studios and Facilities



HISTORIC LANDMARK BUILDING

The Pennsylvania Academy's high Victorian gothic building was designed by Frank Furness and George W. Hewitt and completed in 1876. Identified as a National Historic Landmark, this building is internationally known. It houses the historic studios and cast halls, and has an outstanding collection of American art on permanent display.

Historic Studios and Cast Halls

Students study cast drawing, figure drawing, figure painting, and figure modeling in the same studios used by Thomas Eakins and other distinguished alumni. The six historic studios are designed in the tradition of the beaux-arts schools of Europe, many with 20-foot vaulted ceilings and skylights with northern exposure. These majestic spaces contain the Academy's famous cast collections of antique and Renaissance sculpture, part of the Academy's curriculum for nearly 200 years.

Anatomical Drawing Collection

This collection of skeletal structures, available for study and demonstration, serves the animal drawing and anatomy programs. The collection also contains 19th-century life casts by Thomas Eakins. Other anatomical resources include the dissection program at Hahnemann University Hospital, where students can draw, analyze, and dissect cadavers.

Vaults

Students have access to one of the world's finest collections of American painting, works on paper, and sculpture—much of it not available to the public.

SAMUEL M.V. HAMILTON BUILDING

The newly renovated Samuel M.V. Hamilton Building has more than 300,000 square feet of studios, classrooms, and exhibition areas. It currently houses the Graduate and Certificate Painting Programs.

Private Studios

Every third- and fourth-year student in the Certificate Program, and all students in the Post-baccalaureate and MFA Programs, are assigned a private studio.

Galleries

The first and second floors of the Hamilton Building house exhibition galleries including the Fisher Brooks Gallery for special exhibitions, the Tuttleman Sculpture Gallery, the Sculpture Study Center, and the School Gallery: Gift of the Women's Board—where student, faculty, and alumni work is shown.

Painting/Drawing Facilities

The Hamilton Building contains large painting studios with northern-lit skylights, a large still life painting studio, two drawing studios, and a critique/lecture room. Additional facilities include areas for matting and framing and a spray booth.

Student Lounge

The Student Lounge: Gift of John and Susan Herring has a panoramic view of the city, a rooftop-painting terrace, and comfortable furniture for lounging, eating, and informal gatherings.

1301 CHERRY STREET

This 65,000-square-foot, nine-story loft building houses the printmaking and sculpture facilities, student and faculty studios, the 1301 Gallery, the Academy Library, the art supply store, a student lounge, and a café.

Library

With a collection of 16,000 volumes, the Academy Library supports the informational needs of the entire Academy community. The Library provides research tools in both print and electronic formats, more than 300,000 digital images, 150 journal subscriptions, 20,000 slides, and 250 videotapes and DVDs. There are four computer stations as well as wireless internet access.

Digital Lab

The "Wing," a digital arts facility located in 1301 Cherry Street, houses Mac and PC workstations, high-end printers, scanners, and other peripherals.

Printmaking Facilities

The Academy's printmaking shop includes facilities for stone and plate lithography, intaglio, relief, book-arts, and silkscreen. Classes are taught in a spacious, open-plan studio with a lecture and student archives room that provides ample work and storage space. There are five presses in the etching area, two with motorized press beds. The four presses in the lithography area are capable of pulling large-format work. In the relief area, there is abundant space for cutting, inking, and printing.

Sculpture Facilities

Sculpture facilities are located on two floors of 1301 Cherry Street. One floor is devoted to figure modeling, casting, and plaster work. There is a wax and investment studio as well as a fabricating floor with full wood and metal shops, a foundry (ceramic shell casting) capable of pouring 210 lbs. of bronze and aluminum at a time, and a separate studio dedicated to wood and stone carving. There is a kiln for firing medium-sized clay sculptures, a forge with a 24" by 6" portal, and a portable hoist. The wood shop is equipped with table saw, radial arm saw, stationary sander, miter saw, band saw for metal and wood, drill press, and pneumatic air tools. The metal shop has seven welding stations and is equipped for gas, mig, tig, and arc welding.

Gallery 1301

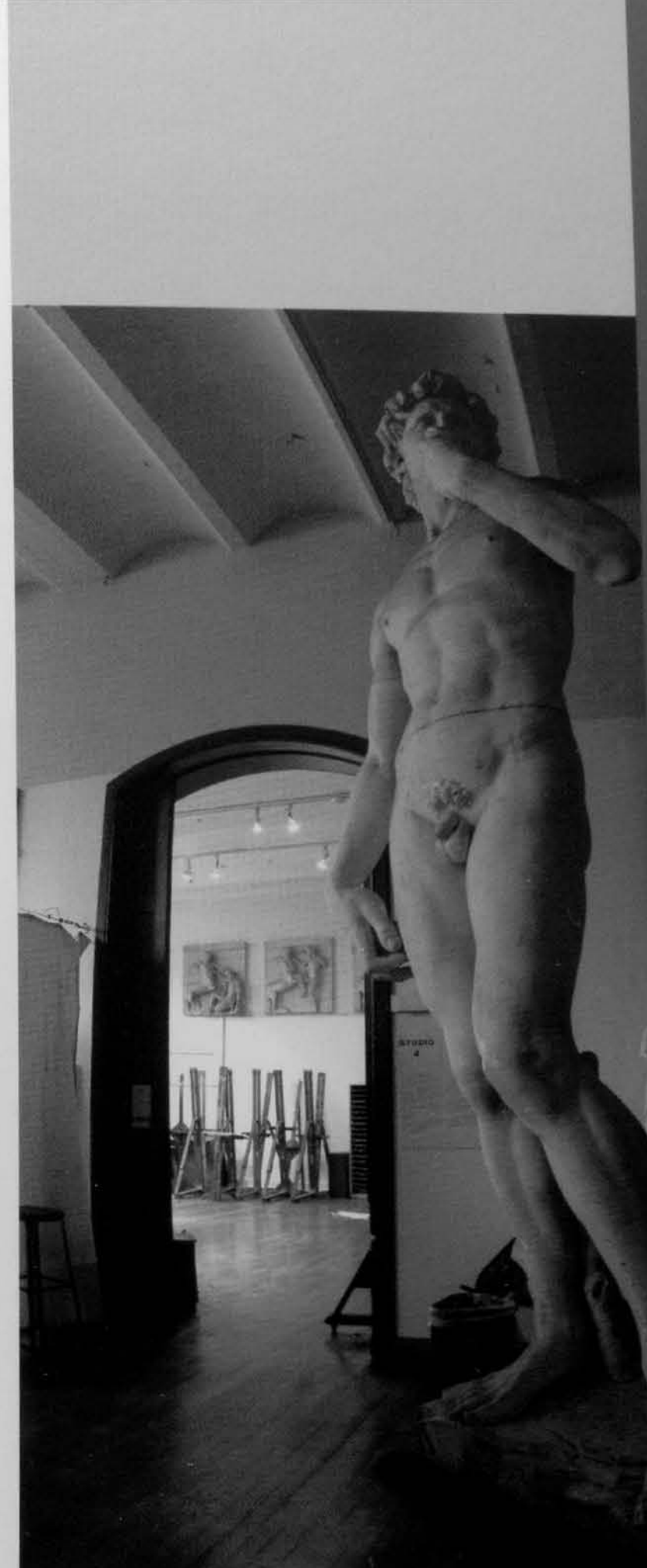
Gallery 1301 is open to the public and shows the work of students in the Certificate, Graduate, and Continuing Education Programs as well as work by alumni and faculty.

Art Supply Store

This store carries a wide range of domestic and imported art supplies, papers, and fine art books at competitive prices. Academy students and alumni receive a 20 percent discount on purchases.

Student Lounge and Café

The Student Lounge, complete with piano, offers a relaxing environment for meeting friends and faculty. Adjoining this space is a café serving meals, snacks, and coffee throughout the day.





Museums and Galleries



Now in its third century, the Academy is a more exciting place than ever, due in large part to the newly opened Samuel M.V. Hamilton Building. This recent addition to our campus has tripled the Academy's exhibition space—as well as substantially supplementing our teaching and learning facilities. The new Hamilton galleries include an extraordinary new School Gallery (a gift by the Academy's Women's Board) and a sculpture study center designed as much for our students as for visitors.

These new facilities join the Frank Furness-designed historic landmark building with its paneled galleries displaying art from the 18th century to 1950 and the historic studios where so many major American artists have been trained.

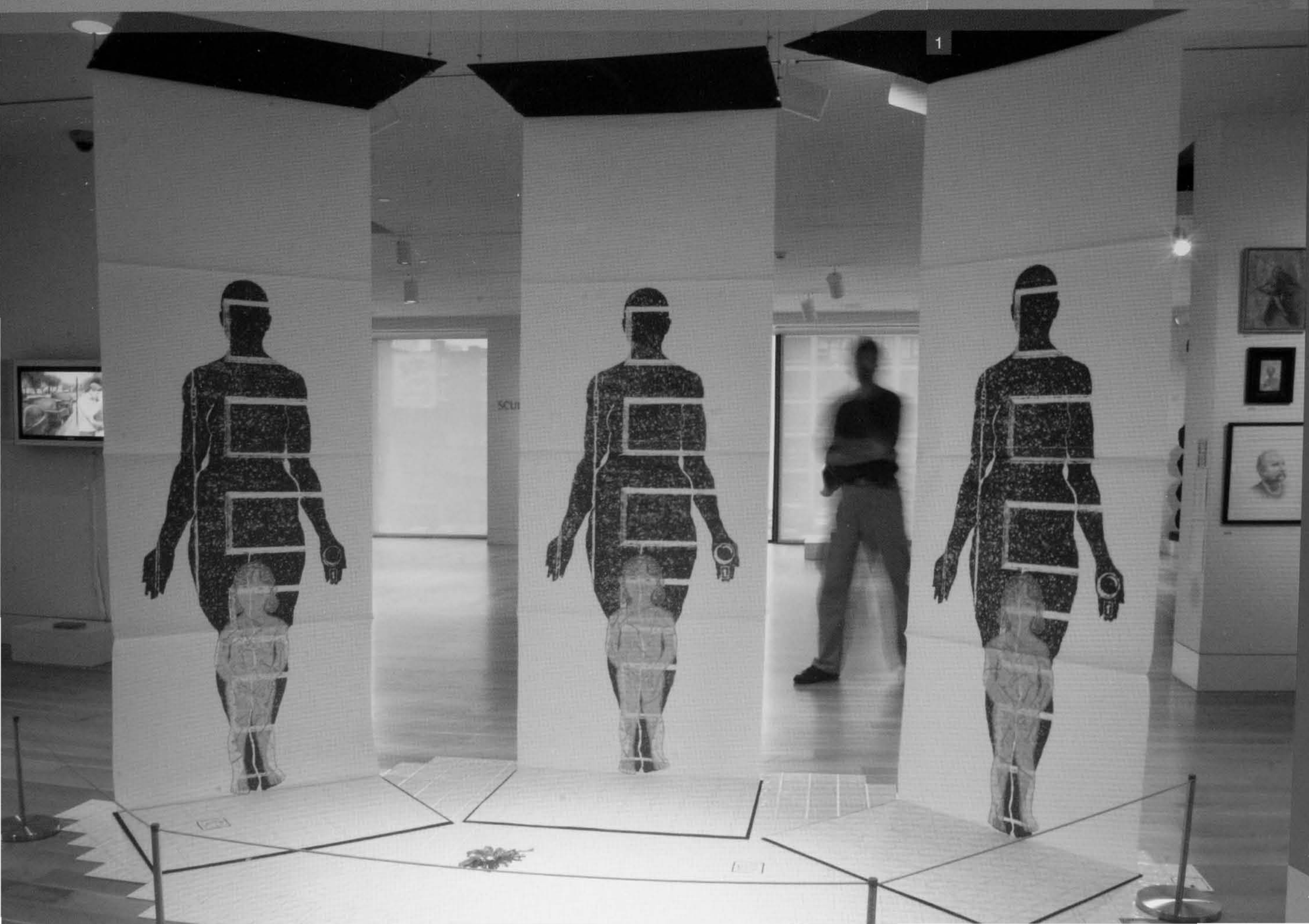
Our collection of American art is one of the most important in the world and includes major works by West, Copley, Peale, Stuart, Homer, Eakins, Bellows, Henri, Carles, Prendergast, Marsh, Hopper, Davis, Avery, Wyeth, Gottlieb, Porter, Pearlstein, Katz, Petlin, and Desiderio—the last two being current members of our graduate faculty. Within the post-war collection you'll see some of our stunning new acquisitions, which include works by Leon Golub, H.C. Westermann, and Jim Nutt.

The cast collection is used extensively by our students, and includes copies of antique, Renaissance, and later sculpture. The Cast Hall and Historic Studios, although private, are also accessible to students, faculty, and staff. And, just a few feet away is our Morris Gallery, an exhibition space devoted to contemporary art that was the first to give one-person shows to Jeremy Blake (Whitney Biennial 2002, 2004), Virgil Marti (Whitney Biennial 2004), and Academy alumna Astrid Bowlby (Pew Fellowship in the Arts winner).



We encourage our students to spend time in the galleries, copying, sketching, analyzing, or otherwise just enjoying the collections. Our curatorial staff is keen on making the collections as accessible as possible, and explaining to our students the workings of the art museum and gallery world. The Academy is a single educational project, designed to give all of our students both the finest studio instruction and unparalleled opportunities to see masterpieces at close quarters.

1 Jennifer White, *Certificate*





Faculty



CERTIFICATE PROGRAM APPOINTED FACULTY

Jan C. Baltzell*

Painting

BFA, Philadelphia College of Art, 1971;
MFA, Miami University, 1976

Linda Brenner

Drawing, Sculpture

BFA, Rhode Island School of Design, 1962;
Temple University Tyler School of Art, 1963

Murray Dessner*

Painting

Certificate, Pennsylvania Academy
of the Fine Arts, 1965

Renee P. Foulks*

Drawing, Painting

BFA, Moore College of Art and Design, 1980;
MFA, Temple University Tyler School
of Art, 1982

Sidney Goodman*

Drawing, Painting

Philadelphia College of Art, 1958;
Honorary Degree, Boston Art Institute, 1996

Oliver Grimley

Drawing, Painting

BFA, Pennsylvania Academy of the Fine Arts,
1949; MFA, University of Pennsylvania, 1950

Al Gury, Chair

Drawing, Painting

BA, Saint Louis University, 1973; Certificate,
Pennsylvania Academy of the Fine Arts, 1976;
MFA, University of Delaware, 1991

Alexander Hromych

Sculpture

Certificate, Pennsylvania Academy
of the Fine Arts, 1969

Daniel D. Miller, Chair, Graduate Programs

Printmaking

BA, Lafayette College, 1951; MFA, University
of Pennsylvania, 1958; Certificate,
Pennsylvania Academy of the Fine Arts, 1959

Steven Nocella

Sculpture

BFA, Philadelphia College of Art, 1981;
MFA, University of Pennsylvania, 1984

William Scott Noel*

Drawing, Painting

BFA, Washington University-St. Louis, 1978

Elizabeth Osborne

Painting

Certificate, Pennsylvania Academy of the Fine Arts, 1958; BFA, University of Pennsylvania, 1959

Peter Paone

Drawing, Printmaking

BA, Philadelphia College of Art, 1958

Jody Pinto*

Sculpture

Certificate, Pennsylvania Academy of the Fine Arts, 1968; BFA, Philadelphia College of Art, 1973

Robert Roesch, Chair

Sculpture

BFA, Pratt Institute School of Fine Arts

Anthony Rosati, Chair

Printmaking

BA, Rider College, 1969; MFA, Temple University Tyler School of Art, 1980

Jill Rupinski

Painting

Pennsylvania Academy of the Fine Arts, 1977; BFA, Philadelphia College of Art, 1981

Bruce Samuelson*

Drawing, Painting

Certificate, Pennsylvania Academy of the Fine Arts, 1968

Patricia Traub

Painting

York Academy of Arts, 1969; Certificate, Pennsylvania Academy of the Fine Arts, 1988

Steven Weiss

Sculpture

Art Students League, 1974; Skowhegan School of Painting and Sculpture, 1976; MFA, University of Pennsylvania, 1977

Ronald E. Wyffels

Printmaking, Drawing

BFA, State University College at Buffalo, 1973; MFA, Montana State University, 1981

**Also Graduate Faculty*

CERTIFICATE PROGRAM

ADJUNCT FACULTY

Anthony J. Ciambella, *Painting*

Patrick D. Connors, *Painting, Drawing*

Lee Dunsmore, *Sculpture*

Carson Fox, *Printmaking, Drawing*

Larry Francis, *Painting, Drawing*

Michael Gallagher, *Painting, Drawing*

John Horn, *Drawing, Sculpture*

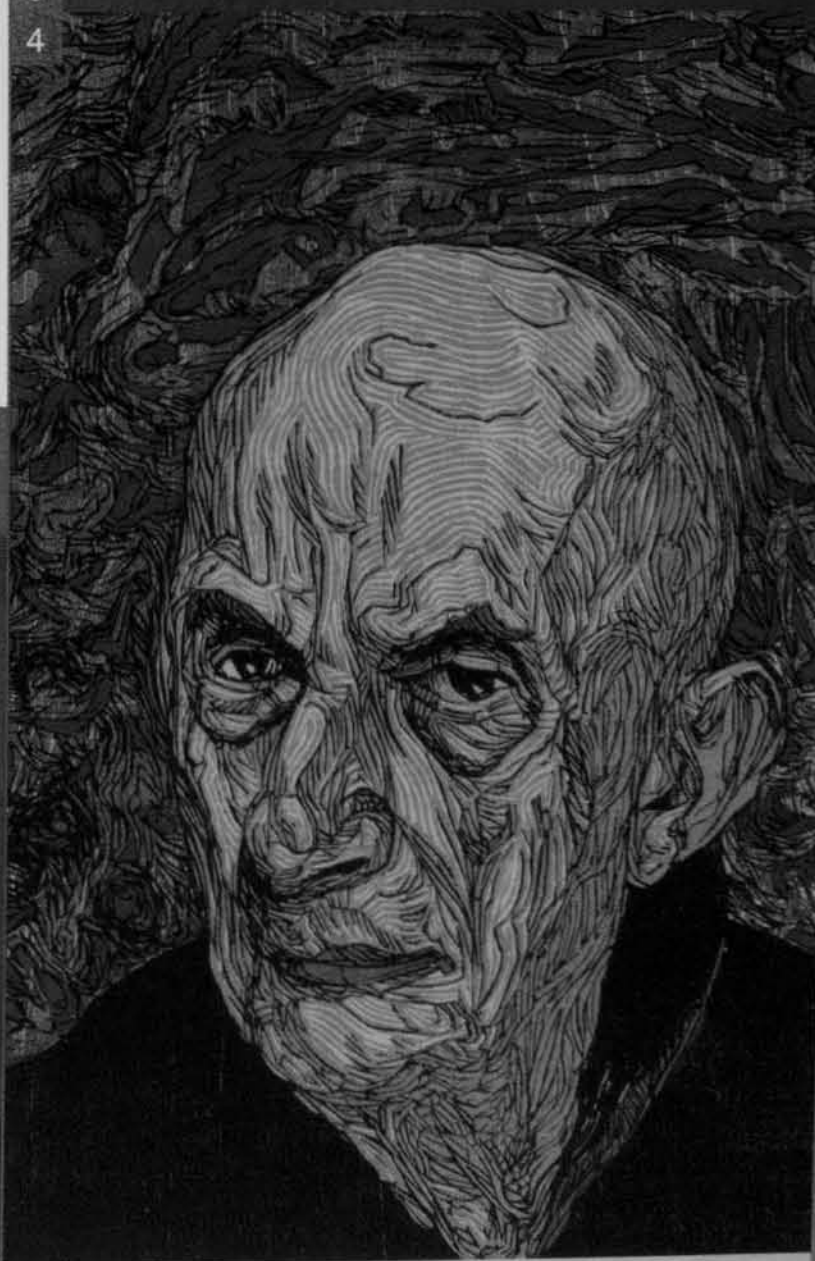
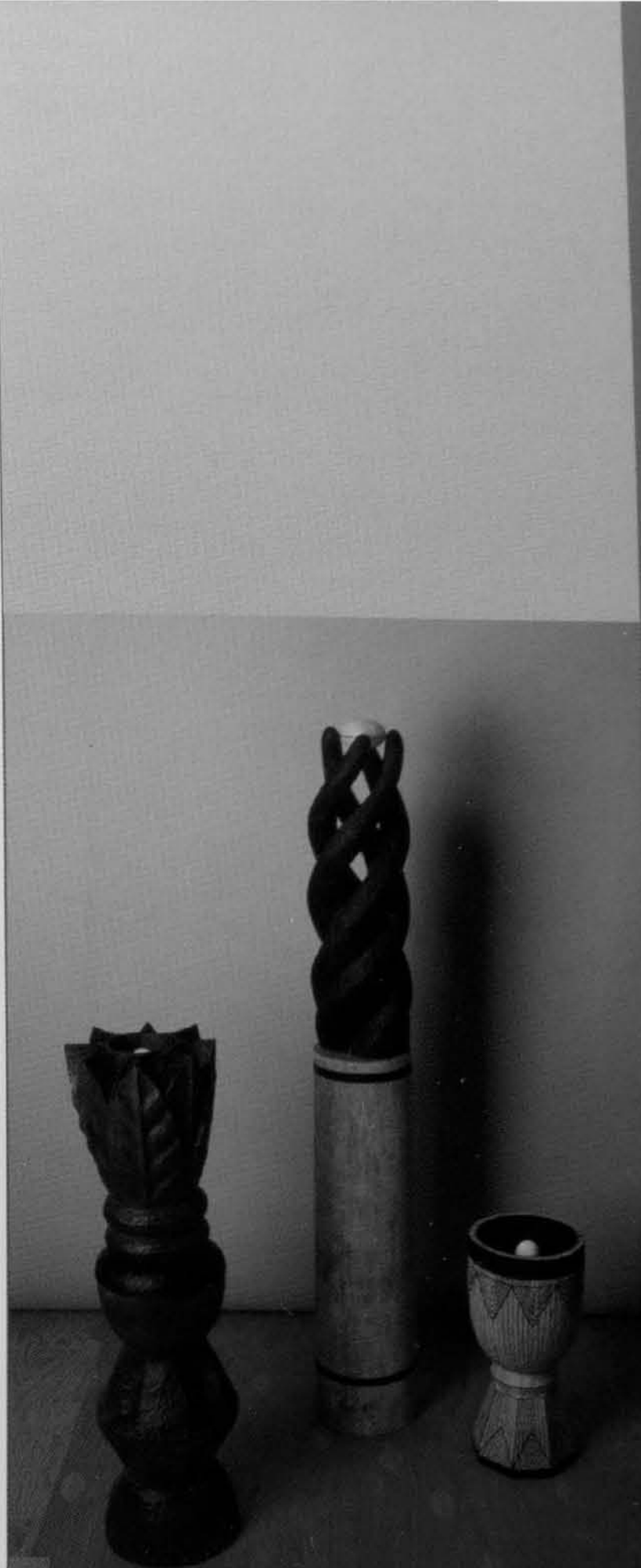
Erik Horvitz, *Digital Arts*

Alex Kanevsky, *Painting*

Douglas S. Martenson, *Painting, Drawing*

Richard W. Proctor, *Drawing*

Gary Weisman, *Sculpture*



1 Vincent Desiderio, *Faculty: Pantocrator*, 2002, triptych. Pennsylvania Academy Purchase Fund

2 Gary Weisman, *Faculty*

3 Linda Brenner, *Faculty*

4 Dan Miller, *Faculty: Leon Golub*, woodcut

5 William Scott Noel, *Faculty: Danae*. Courtesy of Gross McCleaf Gallery



Faculty

MFA AND POST-BACCALAUREATE FACULTY

Jan C. Baltzell*

Mark Blavat

Painting (Critical Seminars)

BFA, Temple University Tyler School of Art, 1977; MFA, University of Iowa, 1984

Katherine Bradford

Painting (Visiting Critic)

BA, Bryn Mawr College, 1964; MFA, State University of New York-Purchase, 1966

Vincent Desiderio

Painting (Visiting Critic)

BA, Haverford College, 1977; Certificate, Pennsylvania Academy of the Fine Arts, 1983

Murray Dessner*

Joel Fisher

Sculpture, Printmaking (Visiting Critic)

Instructor, Ecole des Beaux Arts and Vermont Studio Center

Renee P. Foulks*

Sidney Goodman*

Neysa Grassi

Painting (Visiting Critic)

Certificate, Pennsylvania Academy of the Fine Arts, 1973

Denise Green

Painting, Printmaking (Visiting Critic)

Ecole Superieure des Beaux-Arts, Paris; Université de Paris, La Sorbonne; MFA, Hunter College, 1969

Yvonne Jacquette

Painting, Printmaking, Filmmaking (Visiting Critic)

Rhode Island School of Design, 1956

Gillian Jagger

Sculpture (Visiting Critic)

BFA, Carnegie Mellon University, 1952; MFA, New York University, 1955

Michael Moore

Director, Post-baccalaureate Program

Drawing, Printmaking (Critical Seminars)

BFA, Syracuse University, 1963;

MFA, University of Washington, 1967

Kate Moran

Sculpture, Photography (Critical Seminars)

BA, Antioch College, 1982; Certificate, Pennsylvania Academy of the Fine Arts, 1988; MFA, University of North Carolina at Chapel Hill, 1992

Eileen Neff

(Visiting Critic, Critical Seminars)

BA, Temple University, 1967; BFA, Philadelphia College of Art, 1972; MFA, Temple University Tyler School of Art, 1974

William Scott Noel*

Irving Petlin

Painting (Visiting Critic)

BFA, Art Institute of Chicago, 1956; MFA, Yale University, 1959

Jody Pinto*

Osvaldo Romberg

Sculpture, Painting, Installation (Visiting Critic)

Colegio Nacional de Buenos Aires, 1950-1955

James Rosen

Painting (Visiting Critic)

BS, Wayne State University, 1957; MFA, Cranbrook Academy of Art, 1958

Bruce Samuelson*

Richard Torchia

Artist, Curator (Visiting Critic, Critical Seminar)

BA, University of East Anglia, England, 1979; College of the Holy Cross, 1980

*Also Certificate Faculty



2

3



Alumni

Alumni of the Pennsylvania Academy of the Fine Arts have an important place in the history of American art and are among the leaders of the contemporary art world, with national and international reputations. Nearly every milestone in the region's artistic history, and nearly every great artist emerging from Philadelphia, is linked to the Academy.

DISTINGUISHED ACADEMY ALUMNI INCLUDE:

Edna Andrade	John Marin
Bo Bartlett	Sarah McEneaney
Cecilia Beaux	David McShane
Arthur B. Carles	Violet Oakley
Mary Cassatt	Elizabeth Osborne
Charles Demuth	Maxfield Parrish
Vincent Desiderio	Charles Wilson Peale
Thomas Eakins	Rembrandt Peale
William Glackens	Jody Pinto
William Harnett	Charles Sheeler
Robert Henri	John Sloan
David Lynch	Henry Ossawa Tanner



4

- 1 Renee Foulks, *Faculty*
- 2 Bruce Samuelson, *Faculty*
- 3 Joshua Koffman, *Certificate*
- 4 Plamen Velchev, *Certificate*



Visit Us in Philadelphia



The best way to experience the Pennsylvania Academy of the Fine Arts is to visit. Admissions counselors can provide personalized tours of classrooms, studios, facilities, and the Museum as well as offer informal feedback about an applicant's artwork. Scheduling a visit is not required but it is a good opportunity for both prospective students and their families to learn more about the Academy and the application process.

Those interested in an informal review of their artwork are asked to bring in work that is recent and original. Large and three-dimensional work should be presented in photograph or slide form. Please indicate if you would like a review when you schedule your appointment.

To schedule a visit, please call the Admissions Office at 215.972.7625 at least one week prior to the date you would like to visit.

PHILADELPHIA

The Academy is proud to call the city of Philadelphia its campus. Known as a city of neighborhoods, Philadelphia is as eclectic and lively as it is historic, with dining, nightlife, and shopping to suit every taste. Chinatown, the Italian Market, South Street, Rittenhouse Square, and Northern Liberties are just a few of the city's many neighborhoods to explore.

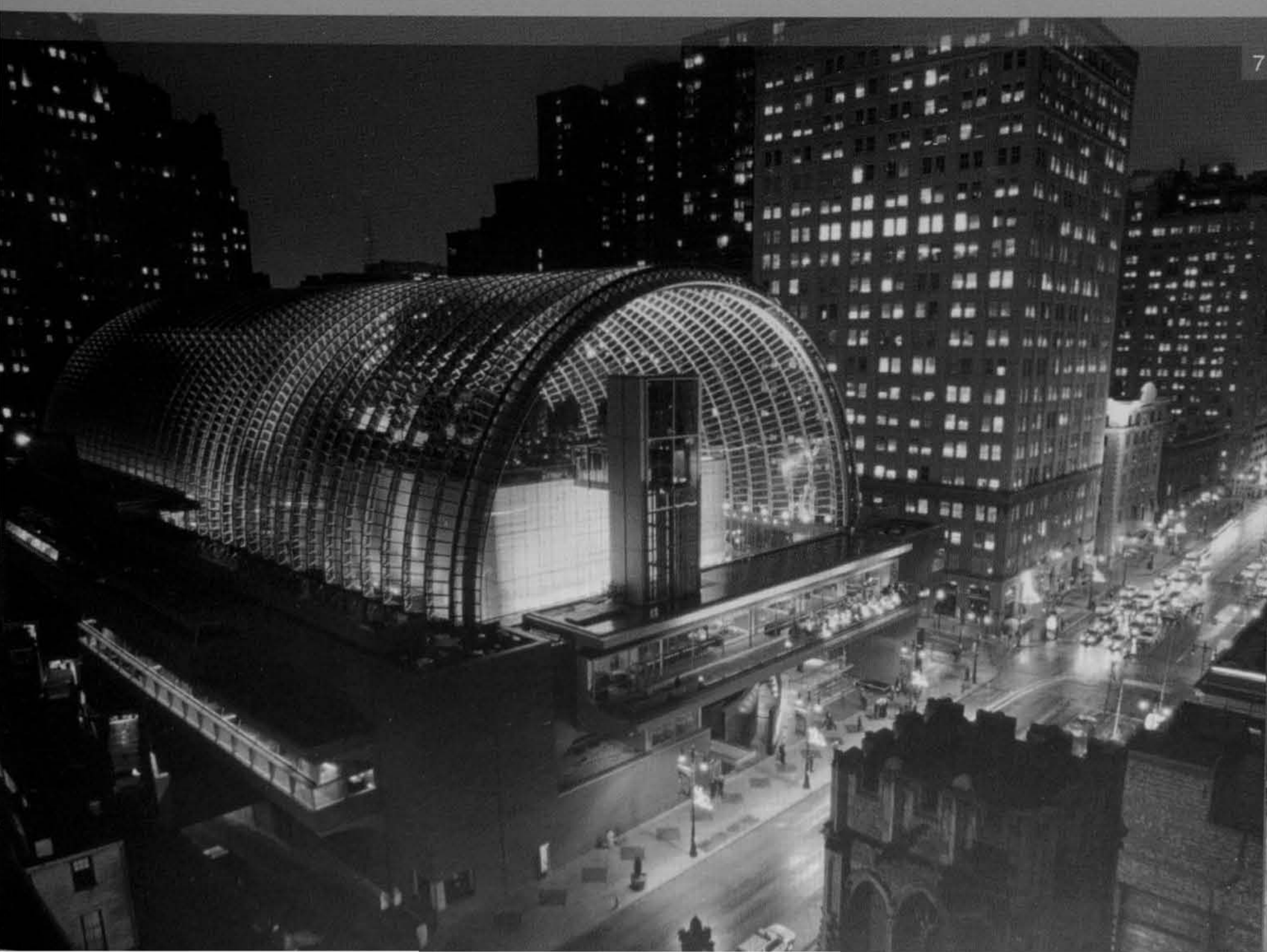
From the world-renowned Philadelphia Museum of Art to the historic and avant-garde theaters that line the Avenue of the Arts to the gallery district in Old City, Philadelphia is rich with opportunities to experience inspiring visual and performing arts. Academy students become a part of the region's arts community very quickly and the knowledge they gain from exploring their "campus" contributes significantly to their studies.

The city boasts more than 400 cultural and educational organizations—many within walking distance of the Academy—including the Fabric Workshop Museum, the Franklin Institute, the Institute of Contemporary Art, the Penn Museum of Archaeology and Anthropology, the Academy of Natural Sciences, and the Rodin Museum. And, with a quarter of a million students in the area, Philadelphia is also one of the nation's largest and most diverse college towns.

Although it is the fifth largest city in America, Philadelphia is an easy city to navigate, with convenient mass transit and a very "walkable" Center City district. Philadelphia is also less than two hours' drive from both New York and Washington, D.C., allowing Academy students to easily explore arts and culture beyond the region.

For more information on Philadelphia attractions, visit www.onebigcampus.com or www.gophila.com.

- 1 Philadelphia Museum of Art
- 2 City Hall
- 3 Love Statue
- 4 "First Friday" in Old City
- 5 The Barnes Foundation
- 6 Rittenhouse Square
- 7 The Kimmel Center for the Performing Arts





Admissions Requirements



CERTIFICATE PROGRAM

The Academy has rolling admissions, however, to qualify for the Academy's Merit Scholarships, you must apply by March 1.

Requirements for Consideration

- Application
- Non-refundable application fee of \$35
- Official high school transcript (or GED)
- Official college transcript(s) (if applicable)
- Two letters of recommendation
- Statement of purpose
 - > Please briefly answer one of the following questions:
 1. Why do you want to be an artist?
 2. What kind of art do you want to make?
- Portfolio (12-15 pieces)

If submitting original work, please label the back of each piece with your full name.

If submitting 35mm slides, please place slides in sleeves, number each slide, and indicate "TOP." Include a slide sheet with your name and the title, size, medium, and year of production for each piece. Please include a self-addressed, stamped envelope if you wish to have your slides returned.

International Students (in addition to items above)

- Official translated school transcript(s)
- Affidavit of support and notarized bank statement
- A minimum TOEFL (Test of English as a Foreign Language) score of 500 (written) or 173 (computerized)

TRANSFER CREDIT POLICY

A large percentage of our student body consists of students with prior college experience. The transfer of credit and level of placement is evaluated on a case-by-case basis. A transfer applicant must be accepted to the program before an evaluation of transfer credits will be completed. The transfer of credits is based upon the evaluation of a student's portfolio and review of transcripts from each post-secondary school attended.

If you are interested in a transfer credit review, please submit the following materials in addition to the standard admissions requirements: transcripts, course descriptions of the classes you wish to transfer, and artwork that reflects the classes you wish to transfer.

MASTER OF FINE ARTS PROGRAM/ POST-BACCALAUREATE PROGRAM

The application deadline for MFA applications is February 1. The application deadline for Post-baccalaureate applications is April 1.

Requirements for Consideration

- Application
- Non-refundable application fee of \$40
- Official college transcript(s) (Applicants must have at least 30 studio-art credits for Post-baccalaureate (PSB) and 60 studio art credits for MFA.)
- Three letters of recommendation
- Statement of purpose
 - > Please briefly answer one of the following questions:
 1. Why do you want to be an artist?
 2. What kind of art do you want to make?
 3. What is your art about?
- Portfolio (15-20 slides for PSB, 20 slides for MFA)

Please submit 35mm slides (in sleeves), number each slide and indicate "TOP." Include a slide sheet with your name and the title, size, medium, and year of production for each piece. Please include a self-addressed, stamped envelope if you wish to have your slides returned.

International Students (in addition to items above)

- Official translated school transcript(s)
- Affidavit of support and notarized bank statement
- A minimum TOEFL (Test of English as a Foreign Language) score of 500 (written) or 173 (computerized)

All supporting materials should be mailed directly to:
Pennsylvania Academy of the Fine Arts
Admissions Office
1301 Cherry Street
Philadelphia, PA 19107



Contact Us



ADMISSIONS

215.972.7625

www.pafa.edu/admissions.jsp

FINANCIAL AID

215.972.2019

www.pafa.edu/studentFinancialAid.jsp

STUDENT AFFAIRS

215.972.2199

www.pafa.edu/studentAffairs.jsp

CONTINUING EDUCATION

215.972.7632

www.pafa.edu/publicPrograms.jsp

SEND COMPLETED APPLICATIONS TO:

Admissions

Pennsylvania Academy of the Fine Arts

1301 Cherry Street

Philadelphia, PA 19107

www.pafa.edu

Accreditation

The Pennsylvania Academy of the Fine Arts is accredited by the National Association of Schools of Art and Design (NASAD).

Membership

The Academy is a member of the Association of Independent Colleges of Art and Design (AICAD). The Association provides benefits to its member colleges, including a students' mobility program, access to international study, opportunities to study and have internships in New York City, faculty and staff development programs, and advocacy for the strengthening of visual arts education.

Publication Credits

Design and Project Management

Leapfrog Advancement Services

Photography

Tom Crane, Floyd Dean, Rick Echelmeyer,
David Graham, John Horn, Bob Krist for GPTMC

Printing

CRW Graphics

Visit the Academy: www.pafa.edu

