
PENNSYLVANIA ACADEMY OF THE FINE ARTS
(FOUNDED 1805)

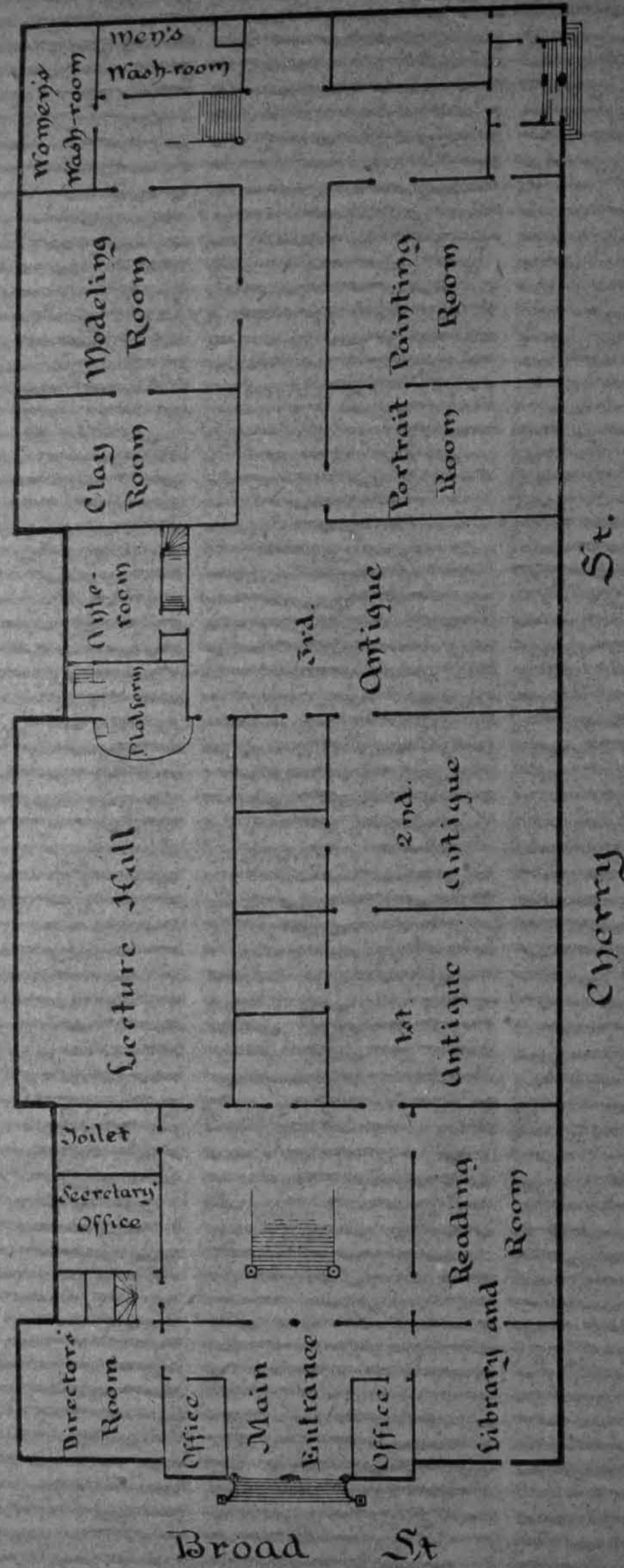
CIRCULAR

OF THE

COMMITTEE ON INSTRUCTION

1891-1892

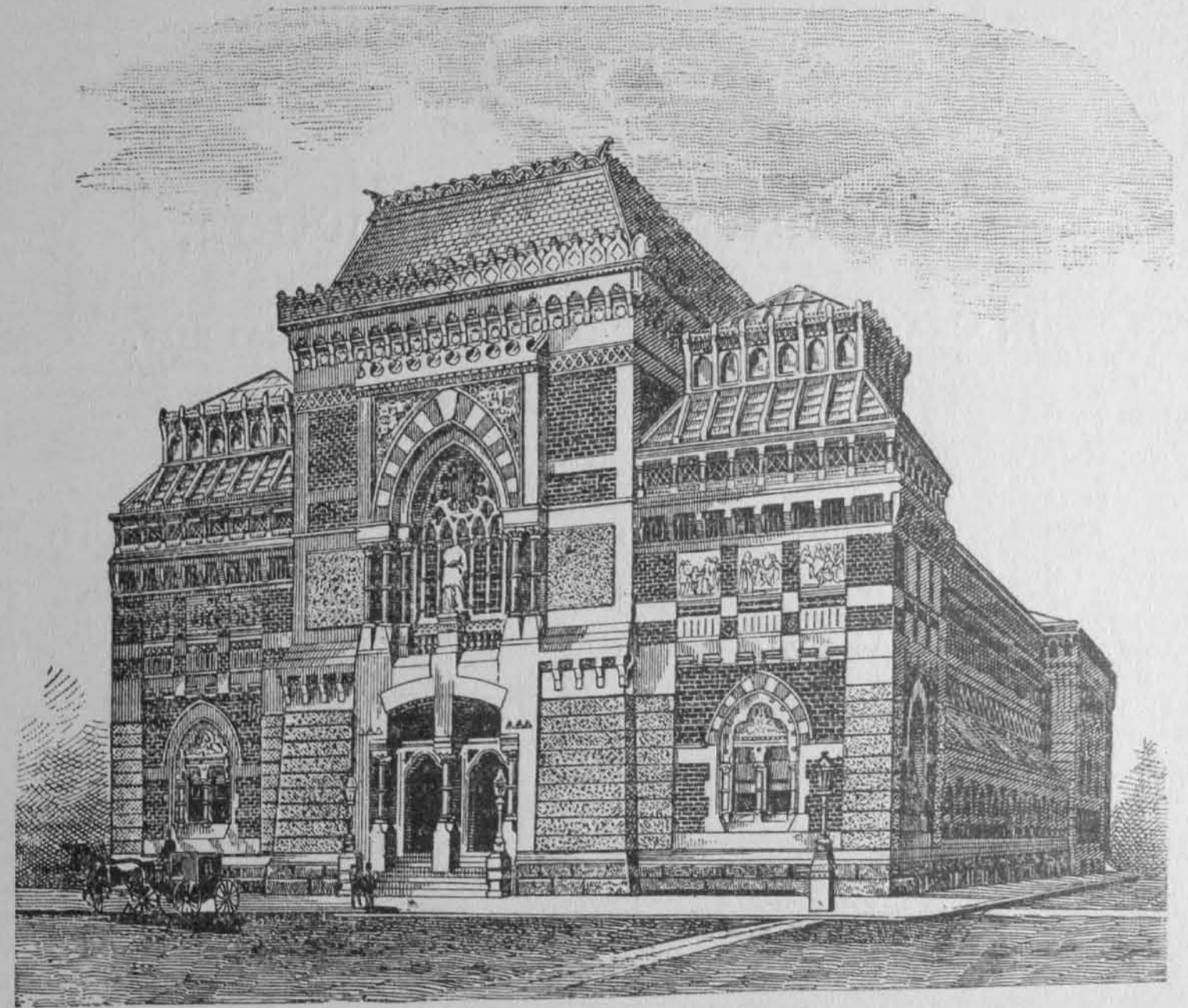
DIAGRAM SHOWING SCHOOL AND LECTURE ROOMS OF THE PENNSYLVANIA ACADEMY OF THE FINE ARTS.



DIMENSIONS.

Whole Building, 100 x 260 ft.
 1st and 2d Antique Rooms, each 30½ x 38½ ft.
 3d Antique, 30½ x 66⅔ ft.
 Painting Room, 35¼ x 39½ ft.
 Modeling Room, 35⅔ x 36½ ft.
 Portrait Room, 22½ x 39½ ft.
 Clay Room, 22½ x 36½ ft.
 Lecture Room, 40 x 60 ft.

CIRCULAR
 OF THE
 COMMITTEE ON INSTRUCTION.
 1891-1892.



PENNSYLVANIA ACADEMY OF THE FINE ARTS
 PHILADELPHIA.

1891.

Committee on Instruction,

IN CHARGE OF THE SCHOOLS OF THE ACADEMY.

JOHN H. PACKARD, M.D., *Chairman*,
CHARLES HENRY HART,
CHARLES HARE HUTCHINSON,
HENRY WHELEN, JR.,
FRANCIS W. LEWIS, M.D.

CIRCULAR
OF THE
COMMITTEE ON INSTRUCTION.
1891-1892.

THE special and primary object of the Schools of the Academy is to afford facilities and instruction of the highest order to persons—men or women—who intend to make painting or sculpture their profession.

Secondarily: To extend, as far as possible, the same benefits, as a foundation, to engravers, die-sinkers, illustrators, decorators, wood-carvers, stone-cutters, lithographers, photographers, etc., who have always been largely represented in the schools. No advantages but those of pure art education are offered to them, they learning outside, with masters, in the workshop or in technical schools, the mechanical parts of their art or trade.

Lastly: To let amateurs profit by the same facilities.

When the classes are crowded, preference in admission will be given to applicants in the order above indicated.

A course of anatomical lectures is given, and also a series of lessons in Perspective and Composition. Lectures by well-known artists and others on general subjects will be arranged by the Committee during the year.

The hours being arranged so as not to interfere with each other, every student in the Life Classes has an opportunity of modeling in clay, as well as of painting from the nude. This combination is an essential feature of the course.

Admission of Students.

The Committee will act upon applications for admission on the last Wednesday in every month, excepting May, June, July and August. All applications should be on file the day before the meeting.

Each applicant for admission to the Antique Classes must submit a specimen of his or her work, signed with full name and address. Drawings must represent the whole or part of the human figure, and must be made from the solid object. They must be executed expressly for the purpose.

Students may be transferred from the Antique to the Life Classes upon recommendation of the Instructors, and upon the approval by the Committee of a drawing or drawings executed by them in the Academy, and representing the entire human figure. Such drawings must be upon paper measuring at least 18 x 24 inches, and signed with full name.

The Life Classes cannot be entered in any other way, except in the case of those who have previously belonged to them; or by those who can give satisfactory proof that they have been members of Life Classes in other recognized Art Schools, and who at the same time submit a specimen of previous work.

Life Class students only will be admitted to the dissecting room; and the same restriction applies to the modeling room at the hours assigned for modeling from the living figure.

Calendar.

The School Year will begin on Monday, September 28, 1891, and end on Saturday, May 29, 1892.

The lectures on Art Anatomy will begin on the 9th of November, and continue about four months.

The lessons on Perspective will begin on February 13, 1891.

The Composition Class will meet on Friday, the 27th of November, and on the last Friday of each succeeding month.

Holidays.—The schools will be closed on Sundays, Thanksgiving Day, Christmas and New Year's Days, and Washington's Birthday.

Charges.

For the season of eight months, including all privileges, except Portrait Class	\$48.00
For one month, same privileges	8.00
For one month, Antique Class, day and night . . .	4.00
For one month, Night Life Class	4.00
For the season of eight months in the Antique Class, day or night, or in the Night Life Class	24.00
For the Portrait Class, each month:	
To students in the Academy	1.00
To former students of the Academy	1.00

All payments to be made in advance.

Students are provided with closets or boxes, drawing-boards and modeling stands.

Each student, on taking out his ticket, will be required to deposit one dollar, which will be paid back to him when he gives up his keys and returns the property of the Academy which he has been using. The Academy will not be respons-

ible for money, watches, jewelry or other valuables which may be lost from the closets or boxes.

At the expiration of the time for which his ticket was issued, the student must, unless it be renewed, remove all his personal property from the Academy, and give up the keys which he has received from the Academy.

A student's ticket entitles the holder to visit the galleries.

Sketching, drawing or painting in the galleries is allowed only when special permission has first been obtained.

Any student well advanced in painting who desires to make a study copy of a picture or piece of statuary belonging to the Academy, may receive from the President permission to do so, on presenting a written application approved by the Committee on Instruction, and specifying the work to be copied.

WEEKLY SCHEDULE OF CLASSES.

	MONDAY.	TUESDAY.	WEDNESDAY.	THURSDAY.	FRIDAY.	SATURDAY.
Men's Life Classes.						
Drawing and Painting	1-4 p.m.	1-4 p.m.	1-4 p.m.	1-4 p.m.	1-4 p.m.	1-4 p.m.
do.	7-9½ p.m.	7-9½ p.m.	7-9½ p.m.
Modeling	9-12 a.m.	9-12 a.m.	9-12 a.m.
do.	7-9½ p.m.	7-9½ p.m.	7-9½ p.m.
Women's Life Classes.						
Drawing and Painting	9-12 a.m.	9-12 a.m.	9-12 a.m.	9-12 a.m.	9-12 a.m.	9-12 a.m.
do.	4½-7½ p.m.	4½-7½ p.m.	4½-7½ p.m.
Modeling	1-4 p.m.	1-4 p.m.	1-4 p.m.
do.	7-9½ p.m.	7-9½ p.m.	7-9½ p.m.
Modeling from the Horse, for Men and Women	9-12 a.m.	9-12 a.m.	9-12 a.m.
Antique Class	9-12 a.m.	9-12 a.m.	9-12 a.m.	9-12 a.m.	9-12 a.m.	9-12 a.m.
do.	1-5½ p.m.	1-5½ p.m.	1-5½ p.m.	1-5½ p.m.	1-5½ p.m.	1-5½ p.m.
do.	7-9½ p.m.	7-9½ p.m.	7-9½ p.m.	7-9½ p.m.	7-9½ p.m.	7-9½ p.m.
Portrait Class	1-4 p.m.	1-4 p.m.	1-4 p.m.
Sketch Class	4-5 p.m.	4-5 p.m.	4-5 p.m.	4-5 p.m.	4-5 p.m.	4-5 p.m.
Composition Class
Lectures on Art Anatomy	4½ p.m.
Lectures on Perspective	8-9 p.m.	8-9 p.m.
Dissecting Room Study	At arranged hours.					

Regulations for Class Rooms.

Antique Rooms.—No cast shall be moved except by order of the Teacher, or Curator, who shall decide how long it may remain away from its place.

Students will be held responsible for breakage of casts resulting from their own carelessness.

Life Classes.—Each new pose shall be determined by a committee of three of the class, taken in regular order from the alphabetical roll.

The committee for the first pose shall consist of the first three on the roll who are present at the commencement of that pose; for the second pose the next three; and so on to the end of the roll.

Any member of the class not present when, by the above regulations, he would be placed upon the committee, will forfeit his turn.

The decision of the committee as to the pose shall be final.

Each painting pose shall consist of six sittings, and each sculpture pose of twelve or eighteen, unless the Instructors should order otherwise.

Only students at work will be admitted into the Life Class Rooms during the regular hours.

Dissecting Room.—The Demonstrator of Anatomy has charge of the Dissecting Room, and superintends, under the Instructors, the dissecting, casting and drawing.

The Assistant Demonstrators (selected from among the students) make the dissections; they also give demonstrations to the Life Class students admitted to the Dissecting Room, who may, if they desire, make drawings of the dissections.

The period for dissection is included between the first of November and the first of the following April. No dissections shall be made in the Academy except such as are authorized by the instructors.

Lectures.

The Composition Class will meet on the last Friday of each month, when drawings illustrative of the subject previously announced will be submitted, and a lecture or informal criticism will be given.

A course of eight or more lessons in Perspective will be commenced in February.

Dr. George McClellan will begin his course of lectures on Art Anatomy on Monday, November 9th, at 4½ o'clock.

These lectures will be given regularly every Monday afternoon at 4½ o'clock throughout the winter. They will be illustrated by diagrams, preparations, models, photographs and extempore drawings on the blackboard. Dissections of the muscles will be shown to the class, and such demonstrations on the cadaver will be made as are valuable and important to art students. Special attention will be given to the mechanism of the joints, to their action, and to the natural postures of the body in repose; also to the prominences of the skeleton as affecting the outline, to the inter-action of the muscles, on which in life depends the contour of the body, and the fine surface-marking due to the disposition of fatty tissue and the relative elasticity of the skin, a study so essential to the artist in order to faithfully represent the human form in drawing, painting or sculpture.

The anatomy of expression will receive careful consideration, and the actions of the muscles will be frequently illustrated upon the living model.

Reference will also be made to the suggestions of comparative anatomy from this point of view.

The above subjects will be treated regionally, as far as such treatment may be practicable, the system of teaching em-

braced by Regional Anatomy being believed by the lecturer to be the best for conveying practical information and awakening the interest of the student in the relation of facts to theories.

In addition to the lectures, demonstrations to advanced students will be given on the living model in the Life Classes by Dr. McClellan.

For students and others, not members of the classes of the Academy, the fee will be Ten Dollars.

Other lectures will be given by well-known artists and competent teachers, as may be arranged by the Committee during the year.

The lectures on Art Anatomy, Perspective, and Composition, and such others as may be arranged by the Committee, are open to all students in the several classes, and a general attendance is expected.

The Charles Toppan Prizes.

These prizes, established in 1881, by the gift of Mrs. Charles Toppan, Miss Harriette R. Toppan and Mr. Robert N. Toppan, were awarded, for the first time, at the autumn exhibition of the Academy, in October, 1882. The conditions are as follows:

At each Annual Exhibition of the Pennsylvania Academy of the Fine Arts, two prizes, one of Two Hundred Dollars and one of One Hundred Dollars, shall be awarded by the Committee on Instruction, for the best two pictures or drawings by students of the Academy who have worked regularly in its schools for at least two years, one of them being the school year preceding the exhibition at which the prize is awarded; provided, however, that there shall be no obligation to award a prize to any work which is not, in the opinion of the Committee, of sufficient merit.

The works submitted shall deal with a subject or subjects previously designated by the Committee. No work will be received unless approved by one or more of the instructors.

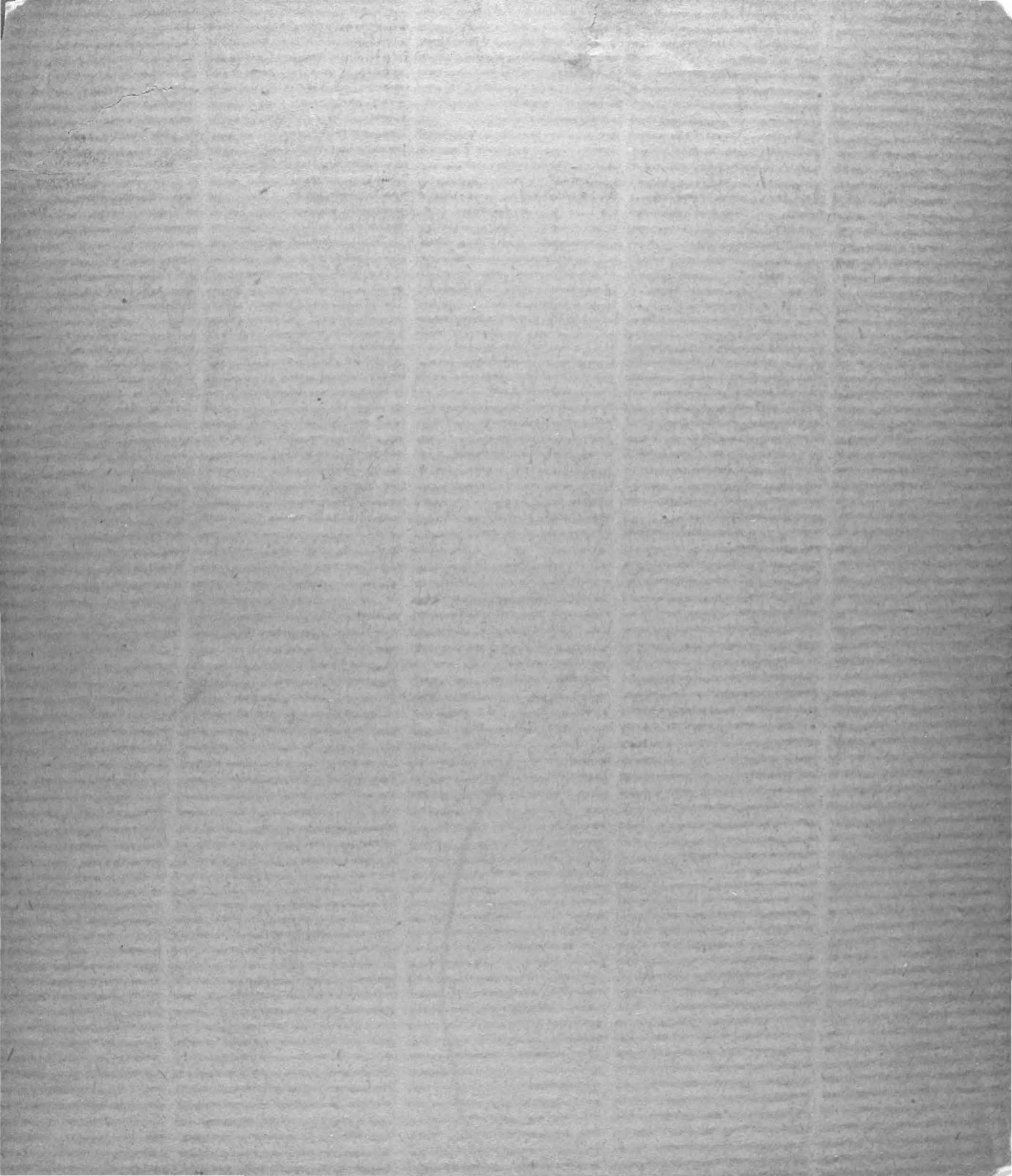
According to the positively expressed terms of the gift, the *drawing* of the pictures will receive the first attention of the examiners; the work showing the most accurate drawing receiving the preference.

Instructions for students intending to exhibit will be furnished in a circular to be hereafter issued.

Traveling Scholarship for 1892-93.

By the liberality of a member of the Board of Directors a Scholarship of \$800 for a year's study abroad was offered to be competed for by the pupils of the male classes of the season of 1890-91. It has been awarded to Mr. J. B. Connor.

The Committee are much gratified to be able to announce that the same gentleman makes a like offer for 1892-93, open to all the students of the Academy. The award of the Scholarship will be made in the same manner as before. On the last Wednesday in March, 1892, the instructors will send in to the Committee the names of such pupils as they may consider eligible, judged by their whole work for the term, specimens of which shall be also submitted. From among those so nominated, one will be chosen by the Committee.



Pennsylvania Academy of the Fine Arts.

SCHOLARSHIP FOR 1891-92.

Notice is hereby given to the students of the Academy that by the liberality of a member of the Board of Directors, provision has been made for a travelling scholarship for 1891-2. The Academy is thus enabled to offer the sum of \$800.00, in quarterly instalments, to defray the expenses of a year's study in Paris for a student chosen from one of the men's classes of this school.

It is proposed that the scholarship be awarded as follows: That on the last Wednesday in February, 1891, the instructors shall send in to the Committee on Instruction the names of such eligible persons as may seem—judged by their whole work for the term—deserving of the privilege offered, and that from among those so nominated one shall be chosen by the Committee.

For further particulars, application may be made to

JOHN H. PACKARD, M.D.,

Chairman of the Committee on Instruction.