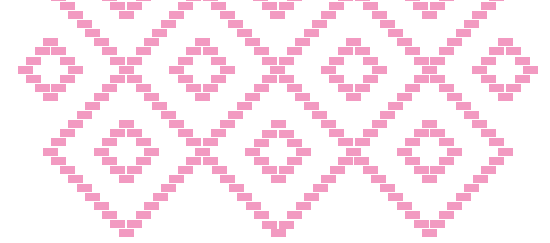


PENNSYLVANIA ACADEMY
OF THE FINE ARTS

ANNUAL REPORT

2014-15

PRESIDENT'S LETTER



“At the academy, everybody I met was a serious painter. I was just starting to find something of my own. It was really inspiring.” David Lynch, *New York Times*, 2014

The David Lynch exhibition in 2014-15 is emblematic of many of the strengths of the Pennsylvania Academy of the Fine Arts (PAFA), America’s oldest art museum and oldest art school. For over two centuries, PAFA has been a leader in fine arts education, fostered artistic innovation, inspired artists and admirers alike, collected outstanding examples of American art, and generated scholarship about American art and culture.

It is exciting to think of a young David Lynch, the now world-renowned filmmaker and television director, as a budding talent at PAFA in the mid-1960s. He came to PAFA to study because he was attracted by the seriousness of the Academy and the focus of his fellow students on making fine art. In the course of his studies, he drew extensively, painted, discovered artists such as Francis Bacon who shared his sensibility, and made his first “moving picture”—an idea and achievement that were seminal to a lifetime of creative production.

Paying tribute to David Lynch through a groundbreaking monographic exhibition and book, *David Lynch: The Unified Field*, was an extraordinary highlight in a very exciting year. A time of social and political turbulence, the Sixties was also a decade of fruitful cultural exploration. The David Lynch retrospective brought together PAFA alumni from that generation, including art dealer Rodger LaPelle, artist James Havard, and photographer Will Brown. The opening events set attendance records, and PAFA developed partnerships with the Free Library of Philadelphia, Philadelphia Film Festival, Bryn Mawr Institute, and International House. All parties benefitted from these collaborations, and PAFA was able to concentrate on Lynch’s fine art while other cultural organizations paid tribute to his films. Lynch’s first “moving picture,” a work entitled *Six Men Getting Sick* has now been added to PAFA’s distinguished collection of American art as a direct consequence of the exhibition.

Lynch was generous with his time during the week of the opening and met with students, attended events at partner institutions, and participated in a public dialogue about his life and work. His week in Philadelphia reconnected him with a community that he still cites as the most important city to the development his now fifty-year career. Current students were inspired by his example, humor, and thoughts about success, and new students were attracted to PAFA because of his association with this institution.

Lynch is a master of the media, and over 70 journalists attended the press preview. The exhibition was eventually covered in media outlets on three continents. The coverage spanned a lively debate about the merits of his drawings, paintings, and prints relative to his film and television productions. Serious, in-depth reviews were published along with notices of the food served at the opening.

The exhibition exemplified PAFA’s dual mission as a Museum and School, provided broad educational opportunities, raised our profile, connected us to other arts and cultural organizations, and demonstrated the value of a fine arts education. This is what we strive for in all that we do: promoting the transformative power of art and art making.

Throughout this annual report, thanks to the generosity of our donors and volunteers, and the creative and dedicated work of our faculty and staff, I hope you enjoy seeing the many ways that mission was fulfilled in 2014-2015.

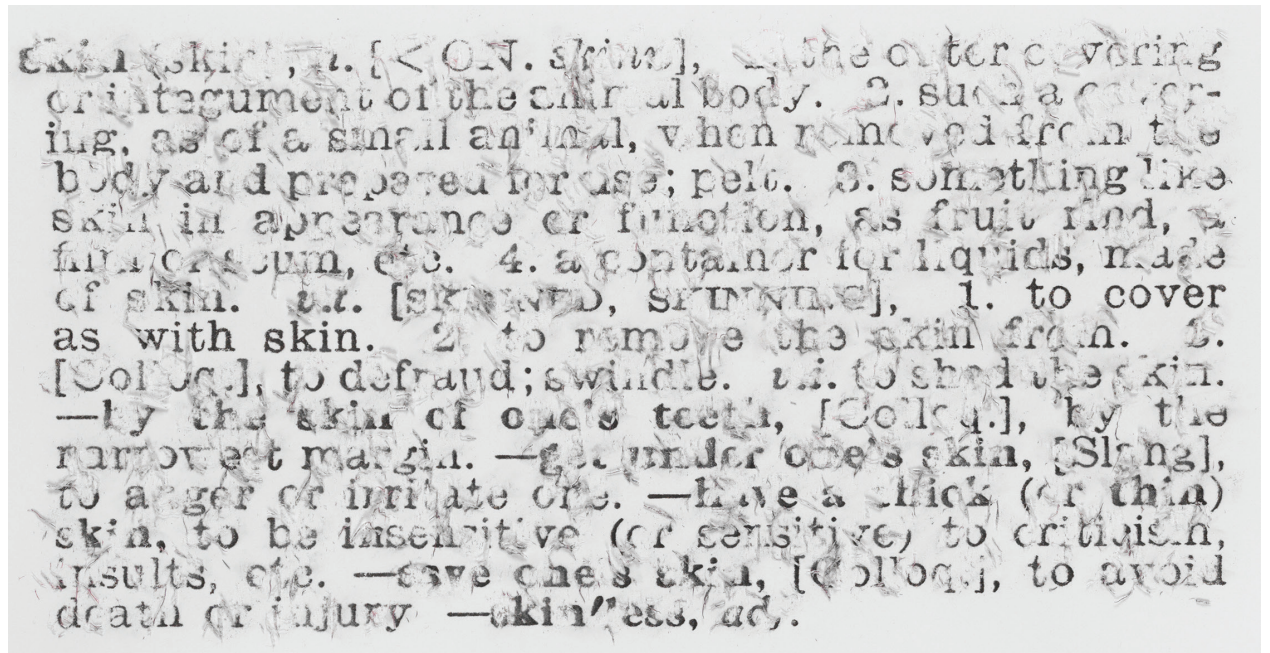
David R. Bringham
President and CEO

COLLECTIONS

ACQUISITIONS

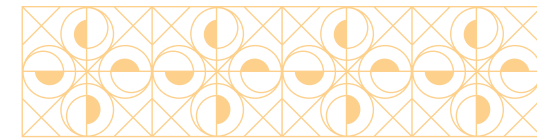
PAFA's collection continues to grow through generous gifts from an ever-expanding group of dedicated patrons. Nearly 240 acquisitions entered the collection in 2015, the vast majority of them gifts. Among the highlights was the first installment of an important gift from Ofelia Garcia, including works by Mary Frank, Barbara Kruger, Joan Snyder, and others. A PAFA professor and a former director of the Print Center, Garcia has collected Post War and contemporary prints by women artists. Her gift was offered partially in response to Linda Lee Alter's previous donation of her significant collection of work by female artists. PAFA's collecting strength in this area continues to draw remarkable gifts from patrons.

Decisions to add work to the PAFA collection include consideration of how work will be viewed both by the public and by the faculty and students at the school. Two works of art were added are of particular interest with this goal in mind. John Moore's *Canal* is a scene from his studio window, but with reflections on the water that are drawn from a different place. The illusionism and compression of space in the picture plane subverts what a viewer would expect from a representational work. An acquisition of work by Bethany Collins, *Skin*, a diptych that explores the definition of "skin" and racial identity, highlights PAFA's commitment to support emerging artists, and our devotion to supporting African American artists. *Skin* is a conceptually powerful work, with a rich, tactile surface.



Bethany Collins, *Skin*, 1965, 2014, Ink on American Masters paper, 32 1/2 x 25 x 11/2 in., 2 frames, Museum Purchase, 2014.41a&b

PAFA made a strategic and exciting purchase of three Hudson River School paintings of east coast scenes: *Niagara* by Albert Bierstadt, *Two Women in the Woods* by Thomas Moran, and *Biddeford Beach, Coast of Maine* by William Frederick de Haas. They fill the acknowledged gap of Hudson River School paintings in PAFAs collection of mid-19th century history paintings. PAFA also capitalized on a rare opportunity to purchase another high quality drawing by Lilian Wescott Hale, an artist known for paintings and drawings of elegant beauty, displaying harmony of form and a high level of craftsmanship.



William Frederick de Haas , *Biddeford Beach*,
Coast of Maine, 1875, Oil on canvas,
30 1/2 x 51 in

JODI THROCKMORTON

PAFA'S CURATOR OF CONTEMPORARY ART



In October 2014, Jodi Throckmorton joined PAFA as the Curator of Contemporary Art. Previously, Throckmorton was the Curator of Modern and Contemporary Art at Ulrich Museum of Art at Wichita State University, and the Associate Curator at the San Jose Museum of Art. She earned her MFA in Museum Studies from San Francisco State University, and her BA in Art History and French from the University of Nebraska-Lincoln.

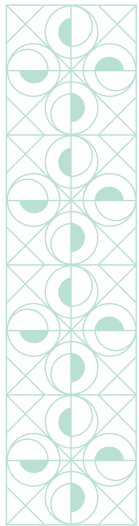
During her time at the Ulrich, Throckmorton curated *Postdate: Photography and Inherited History in India* (2015); and *Bruce Conner: Somebody Else's Prints* (2014). At the San Jose Museum of Art, she curated *Questions from the Sky: New Work by Hung Liu* (2013); *Renegade Humor* (2012); *This Kind of Bird Flies Backward: Paintings by Joan Brown* (2011); and *The Modern Photographer: Observation and Intention* (2010); and more. Throckmorton also co-organized, with Harry Philbrick, The Edna S.

Tuttleman Director of the Museum at PAFA, *Dive Deep: Eric Fischl and the Process of Painting*, on view at PAFA and the San Jose Museum of Art (2012-13).

At PAFA, Throckmorton is overseeing PAFA's contemporary art exhibition programs, collaborating with the museum director and the Collections Committee to reinvigorate PAFA's dedication to acquiring contemporary art. She has assumed curatorial responsibility for gifts and purchases of artwork, and the care and display of works in the permanent collection, post-1965.

POSTDATE

Photography and Inherited History in India



LOANS SPOTLIGHT

Collections/Selected Loans from PAFA

Florine Stettheimer, *Picnic at Bedford Hills*, Exhibition:
Florine Stettenheimer, Städtische Galerie im Lenbachhaus und Kunstbau,
Munich: September 19, 2014 - January 6, 2015

Bessie Potter Vonnoh, *Young Mother*, and Edmund C. Tarbell,
The Breakfast Room, Exhibition: *Monet and American Impressionism*,
Harn Museum: February 3, 2015 - January 24, 2016
(3 venues, Harn, Hunter Telfair)

Collections/Selected Loans to PAFA

Peter Blume, *The Rock*, Exhibition: *Peter Blume: Nature and Metamorphosis*,
November 14, 2014 - April 5, 2015

John Leslie Breck, *Garden at Giverny*, Exhibition: *The Artist's Garden:
American Impressionism and the Garden Movement, 1887-1920*,
February 13 - May 24, 2015



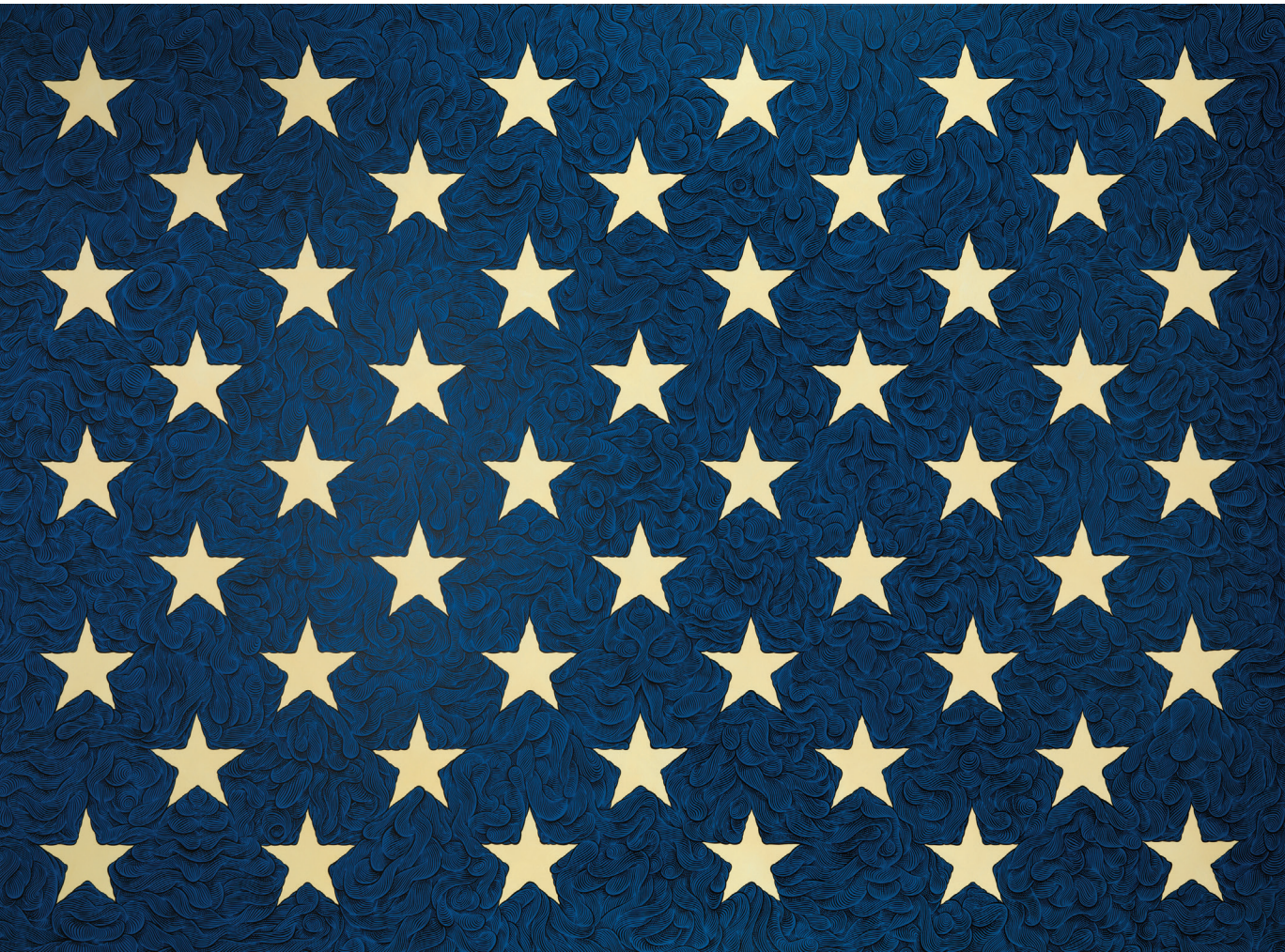
Bessie Potter Vonnoh, *Young Mother*, 1896, Bronze with green-and-brown patina;
lost-wax cast in 1913, 17 x 17 x 21 in., 1923.9.8. Gift of Mrs. Edward H. Coates in
memory of Edward H. Coates

EXHIBITIONS



Summer Shuffle: Contemporary Art @ PAFA Remixed

June 22 – October 12, 2014



A collaboration between PAFA's curatorial and museum education departments, *Summer Shuffle: Contemporary Art @ PAFA Remixed* offered a new look at connections and contrasts in the museum's collection of works created since 1960.

The exhibition drew from recent acquisitions, including major gifts to the collection. Among the artists included were Joan Brown, Squeak Carnwath, Willie Cole, Viola Frey, Hope Gangloff, Leon Golub, Yvonne Jacquette, Ellen Lanyon, Hung Liu, Catherine Murphy, Elizabeth Murray, Odili Donald Odita, Christina Ramberg, Alison Saar, Mark Dean Veca, and Kara Walker.

The exhibition was curated by Robert Cozzolino, Senior Curator and Evelyn and Will Kaplan Curator of Modern Art, and art educators Elizabeth Hamilton and Catherine Samson.

Mark Dean Veca, *Starfield*, 2012, India ink and acrylic on canvas, 59 x 83 in., Museum Purchase, 2014.4



Spiritual Strivings: A Celebration of African American Works on Paper

June 27 – October 12, 2014

The title *Spiritual Strivings: A Celebration of African American Works on Paper* was inspired by W.E.B. Du Bois's seminal essay "Of Our Spiritual Strivings" from *The Souls of Black Folk*. This exhibition featured two primary components: *The Harmon & Harriet Kelley Collection of African American Art: Works on Paper* and *Eldzier Cortor: Theme and Variations*.

The Kelley Collection was organized by PAFA in association with Landau Traveling Exhibitions, Los Angeles, CA., and was curated by Anna O. Marley, Curator of Historical American Art. Over 70 works on paper in this exhibition spanned the 20th century and represented a fraction of the Harmon and Harriet Kelley Collection in San Antonio, TX.

The works in this exhibition were produced primarily during the 1930s and 40s, the era of the Great Depression and the Works Progress Administration of the Federal Arts Project. That period gave birth to a school of African American regionalism and black consciousness of the 1960s.

Eldzier Cortor: Theme and Variations was curated by Robert Cozzolino, Senior Curator and Evelyn and Will Kaplan Curator of Modern Art. It celebrated a generous recent gift to PAFA from artist Eldzier Cortor. The 53 objects he donated to PAFA consist of prints and preparatory materials related to his printmaking process, spanning from the 1950s through 2000. The installation revealed Cortor's working methods, and showed how he has used printmaking as a means to explore motifs that morph, become embellished, expand, and turn calm.

Alma Woodsey Thomas, *Wind and Flowers*, 1973, Watercolor on paper, 14 1/2 x 18 in, The Harmon and Harriet Kelley Collection of African American Art

PAFA Curator Robert Cozzolino with artist Eldzier Cortor and his daughter-in-law at the *Spiritual Strivings* Opening.

The exhibition was organized by the Pennsylvania Academy of the Fine Arts in association with Landau Traveling Exhibitions, Los Angeles, CA

The Harmon and Harriet Kelley Collection of African American Art: Works on Paper (June 27 – October 12, 2014)
Presenting Sponsor: CHRISTIE'S

Additional support provided by the Edna W. Andrade Fund of the Philadelphia Foundation.



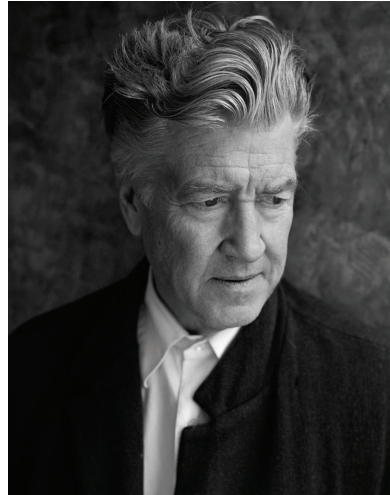


David Lynch: The Unified Field

September 13, 2014 – January 11, 2015

David Lynch: The Unified Field was Lynch's first major museum exhibition in the United States. It was organized in close collaboration with the artist, and brought together all aspects of Lynch's creative life into a unified field of subjects and concerns. The show featured approximately 90 paintings and drawings from 1965 to present. Part of the exhibition explored Lynch's early work, much of which had never been displayed in public. In addition, the exhibition included *Six Men Getting Sick*, a hybrid work of art that fused painting, sculpture, sound, film, and installation, which Lynch made as a PAFA student in 1967.

Recurrent themes in the exhibition included the human body combined with "organic phenomena" in unlikely combinations and the home depicted as a site for childhood memories, flashbacks, nightmares, or passion. Lynch's ability to suggest the emotional intensity of his subject matter through paint textures, surface effects, and physical traces of his hand brought intimacy and empathy to even the most disturbing narratives. Many works presented a tense, mysterious scenario suspended in the course of a story.



David Lynch. Photo: Adam Bordow

The exhibition brought unprecedented press coverage, featuring Lynch in context of both PAFA's museum and school.

PAFA partnered with the following organizations during this exhibition: PhilaMOCA, Bryn Mawr Film Institute, Philadelphia Film Society, Free Library of Philadelphia, International House Philadelphia.



The William Penn Foundation was the presenting sponsor of this exhibition.

PAFA's special exhibitions in 2014-15 are supported by generous contributions from Jonathan L. Cohen, and Linda Seyda and Bob Boris.



David Lynch, *Woman with Screaming Head* (detail), 1968, Acrylic on canvas, 66 x 60 in. Collection of Rodger LaPelle and Christine McGinnis

“Something Clicked in Philly:”
David Lynch and His Contemporaries
September 13, 2014 – February 1, 2015

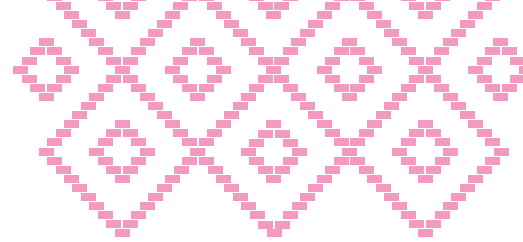


“*Something Clicked in Philly:*” *David Lynch and His Contemporaries* complemented *David Lynch: The Unified Field*, and explored the artistic context in which Lynch worked during his years at PAFA and in Philadelphia, from 1965-70. Artists in the exhibition included Morris Blackburn, Will Brown, Murray Dessner, Eugene Feldman, James Havard, Ben Kamihira, Leon Kelly, Kocot and Hatton, Rodger LaPelle, Noel Mahaffey, Virginia Maitland, Christine McGinnis, Eo Omwake, Elizabeth Osborne, Tom Palmore, Hobson Pittman, Peggy Reavey, and Bruce Samuelson.



Hobson Pittman, *Summer Evening* (study), 1936, Watercolor over graphite on off-white wove paper, 20 1/2 x 34 1/4 in. irr., Bequest of the artist, 1972.18.85

Left: Bruce Samuelson, *Untitled*, 1977, Oil pastel and graphite on white wove paper, 25 5/8 x 19 3/4 in., Funds provided by the Charles E. Merrill Trust, Marian B. Stroud and Dr. and Mrs. Henry A. Jordan, 1977.5.5



Eiko: A Body in Places

October 3, 2014 – April 5, 2015



Eiko Otake, *A Body in a Station*, photo by Anna Lee Campbell

Eiko in Fukushima, Tomioka, 22 July 2014, No. 1104, photo by William Johnston

PAFA presented the first rendition of *A Body in Places* by Eiko, consisting of two related works. *A Body in a Station* was a series of four three-hour performances created and performed by Eiko in Philadelphia's Amtrak 30th Street Station. *A Body in Fukushima* was an exhibition of photographs by William Johnston showing Eiko in a radically different set of terminals: the abandoned rail stations in Fukushima, Japan. *A Body in Fukushima* captured a visit

that Eiko and Johnston made to the irradiated communities that were evacuated after reactors at the Fukushima Daiichi nuclear plants in Japan suffered massive damage in the wake of an earthquake and tsunami in March 2011. By presenting her performance and an exhibition of photographs simultaneously, Eiko sought to establish her own body as a link between vastly different stations.

A Fine Arrangement: The Art of Still Life

October 28, 2014 – April 12, 2015

A Fine Arrangement: The Art of Still Life brought together a selection of works from the museum's permanent collection, along with works from the Woodmere Art Museum, and contemporary works from artists with ties to both PAFA and the Philadelphia region. Many artists included in the exhibition were trained at PAFA, including Charles Demuth, Charles Lewis Fussell, and John Peto. Other artists not only trained, but also taught at PAFA, including Arthur B. Carles, Ben Kamihira, Jimmy Leuders, Elizabeth Osborne, and Franklin Watkins. The two curators of the exhibition, Jan Baltzell and Michael Gallagher, are both artists and PAFA faculty members.



Claire Kincaid, *At the Foot of the Table*, 2013. Oil on canvas, 26 x 52 in. (diptych). Collection of the artist.

Peter Blume: Nature and Metamorphosis

November 14, 2014 – April 5, 2015



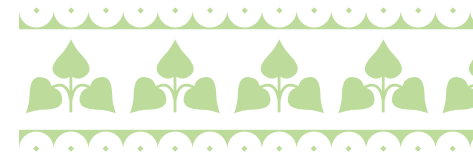
Peter Blume: Nature and Metamorphosis was the first retrospective of the American modernist Peter Blume since 1976. It included 56 paintings and 103 drawings, revealing Blume's central role in the development of American modernism and examining his impact on late 20th-century narrative painting.

The exhibition featured sections that examined several major projects that occupied Blume over many years. Blume developed large-scale, meticulously designed paintings by thinking through drawing. Each was preceded by dozens of working drawings in a wide range of media made with surprisingly diverse approaches. Through this process, Blume discovered the formal structure and iconographic content of his major works, including *Tasso's Oak* (1957-60) and *The Rock* (1944-48).

Drawing on a wealth of new scholarship in American modernism as well as numerous unpublished archival collections, *Peter Blume: Nature and Metamorphosis* considered the relationship between automatic drawing and precise painting in Blume's practice, his relationships with an international community of artists and writers, and the political background of his imagery.

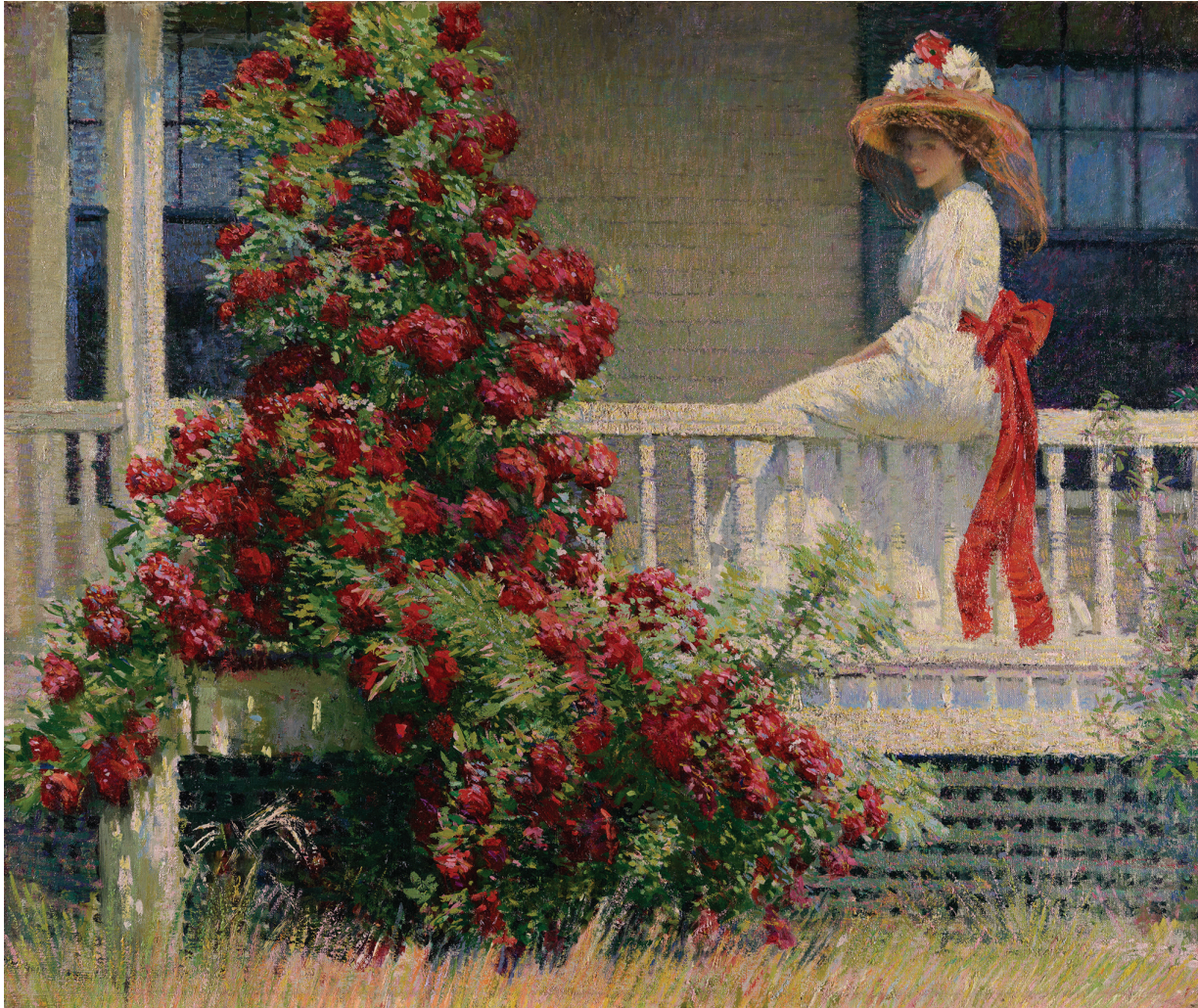


Presenting Foundation sponsor: the Henry Luce Foundation. Major support provided by the Boris Lurie Art Foundation. Additional funding provided by grants from the National Endowment for the Arts, the Wyeth Foundation for American Art, and the Armand G. Erpf Fund, with additional support from Eric Brecher, and Mr. Jason Schoen.



The Artist's Garden: American Impressionism and the Garden Movement, 1887-1920

February 13 – May 10, 2015



Philip Leslie Hale, *The Crimson Rambler*, ca. 1908, Oil on canvas, 25 1/4 × 30 3/16 in. Pennsylvania Academy of the Fine Arts, Philadelphia, Joseph E. Temple Fund, 1909.12.

The Artist's Garden: American Impressionism and the Garden Movement, 1887-1920 told the story of American Impressionist artists and the growing popularity of gardening as a middle-class leisure pursuit at the turn of the 20th century, bringing together paintings, sculpture, books, and stained glass. The exhibition was organized around themes of American Artists/European Gardens; the Lady in the Garden; Leisure and Labor in the American Garden; the Urban Garden; the Artist's Garden; and the Garden in Winter/Garden at Rest.

Among the artists whose works were included were: Hugh Henry Breckinridge, Cecilia Beaux, William Merritt Chase, Charles C. Curran, Maria Oakey Dewing, Frederick Carl Frieseke, Daniel Garber, Philip Leslie Hale, Childe Hassam, Violet Oakley, Jane Peterson, Jessie Willcox Smith, John H. Twachtman, Robert W. Vonnoh, and J. Alden Weir.

PAFA partnered with the following organizations during this exhibition: Philadelphia Science Festival, the Barnes Museum, Morris Arboretum, Copeland String Quartet, The Woodlands in West Philly, People's Library, Girl Scouts, Love'N'Fresh Flowers, Stenton's Colonial Revival Garden, Bartram's Garden.

Leading support from the Mr. & Mrs. Raymond J. Horowitz Foundation for the Arts, Inc. and the Richard C. von Hess Foundation. The Major Exhibition Sponsors are Bill and Laura Buck, and Christie's. Additional support from Edward and Wendy Harvey, Mr. and Mrs. Washburn S. Oberwager, Pennsylvania Trust, Martin Stogniew in memory of Judy Stogniew, a lover of art and gardening, Ken Woodcock, and the Wyeth Foundation for American Art.

CHRISTIE'S

Gardens on Paper

February 13 – May 10, 2015



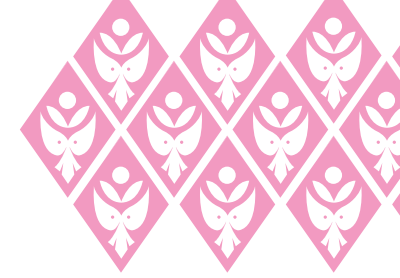
In conjunction with the *The Artist's Garden* exhibition, *Gardens on Paper* demonstrated how American artists' fascination with horticultural matters spilled over from the canvas into works on paper. In these media, more than anywhere else, popular and artistic interests in garden subjects intersected. While prints and drawings circulated in fine art settings, works on paper were also disseminated through reproduction in mass circulation magazines and gardening books. In these publications, artists were able to bridge the divide between fine art and mass-media, reaching broader audiences through new reproductive technologies, such as modern chromolithography and early color photography. Garden books and magazines also invited collaborations between famous writers and artists.



Thomas Shields Clarke, Fernbrook, ca. 1910, Photographic autochrome, Pennsylvania Academy of the Fine Arts, Archives

Robert Taplin: Punch

February 13 – May 24, 2015



For the second installment of PAFA's Sculpture Plinth Exhibition Program, Robert Taplin created the specially commissioned work *The Young Punch Juggling*, a 16-foot fiberglass and steel sculpture, which was installed on the front façade of PAFA's Historic Landmark Building. *The Young Punch Juggling* was the latest piece in Taplin's series of contemporary takes on the historical Punch figure, placing the iconic

Italian trickster in a variety of compromising or precarious positions in present-day settings. The plinth sculpture was accompanied by an installation of Taplin's work in the galleries of the Historic Landmark Building, including two large-scale sculptures, *Punch Makes a Public Confession* and *Punch is Homeless*, as well as a selection of small-scale works.



Robert Taplin, *The Young Punch Juggling*, 2014, fiberglass, steel, and lights, 193 x 86 x 30 in., photo credit Peter Mauss / esto

Robert Taplin, *Punch Makes a Public Confession*, 2014, milled foam, reinforced gypsum, wood, and steel, 106 1/2 x 64 x 44 1/2 in., photo credit Peter Mauss / esto

The Sculpture Plinth Program: Robert Taplin is supported by Arthur Dantchik, Joe and Jane Goldblum, William and Joan Goldstein, Marie Morgan, Mr. and Mrs. Samuel Peterson, and Richard Vague.

The 114th Annual Student Exhibition

May 15 – June 7, 2015



At the *114th Annual Student Exhibition (ASE)*, works by BFA students, third- and fourth-year Certificate program students and Master of Fine Arts candidates showcased a diversity of styles that combined traditional skill and contemporary vision. In addition to its role as an exhibition and sale, *ASE* represented a competition for the coveted Certificate program's Cresson, Schiedt, Ware, and Women's Board Travel Scholarships. This year's *ASE* featured nearly 1,000 works in various media by 36 graduating MFA students and 49 Certificate and BFA students.

Students sold 315 pieces totaling \$289,619. Seventy-percent of proceeds go to the students, 30% to scholarships. The Preview and Sales commissions raised \$306,086 for scholarships.



Rock, Paper, Scissors: Drawn from the JoAnn Gonzalez Hickey Collection

May 15 – November 1, 2015

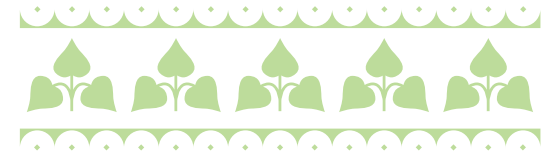


Rock, Paper, Scissors featured selections from the JoAnn Gonzalez Hickey collection made by students in PAFA's fall 2014 Advanced Drawing seminar, which was led by PAFA's Senior Curator and Evelyn and Will Kaplan Curator of Modern Art, Robert Cozzolino, and artist/faculty member Astrid Bowlby. As the course progressed, the students brought their studio experience, class discussions, and experience with original artwork and the broader art world to shape the exhibition. Students established a relationship with Hickey and explored her collection, an invitation made possible through her SYZYGY curatorial platform for study. The result was an unusual curatorial project full of discovery.



Andy Moon Wilson (b. 1974), *Untitled, 10-10-10*
(October 10, 2010), Ink, acrylic, and colored pencil on
Stonehenge paper; 10 x 10 in.

ALUMNI GALLERY



Heads & Hearts: The Work of Yoni Hamburger and Ashley Wick, June 26 - October 12, 2014 featured the work of recent PAFA graduates Hamburger and Wick (MFA '13), recipients of the prestigious the MFA Faculty Exhibition Award, as they explored the spaces between mind, heart, representation, and conception.

Spaces Passed Through: New Paintings by Ted Walsh September 20 - November 30, 2014 exhibited Walsh's (MFA '11) newest paintings of solitary buildings, and solitary figures in landscapes., which are imbued with atmosphere and light reminiscent of such American greats as Winslow Homer and Edward Hopper.

Kanzler and Mulligan: New Work December 5, 2014 - January 25, 2015 focused on the work of Jenny Kanzler (MFA '05) and Catherine Mulligan (Cert. '09), who draw on real and unreal memories and the fears and uncertainties of childhood.

Douglas Witmer: New Paintings January 29 - April 12, 2015 presented a recent group of Witmer's (MFA '01) paintings that intuitively combined simple geometric imagery, emphatic color, and subtle manipulation of surface physicality to serve as an inquiry into the materiality of seeing, perception, feeling and memory.

Beck, Bielen & Michaud April 23 - July 12, 2015 presented new work by Stephanie Beck (MFA '07), Stanley Bielen (Cert. '80), and Nicole Michaud (Cert. '12). On view were Beck's sculptural pieces made out of white paper, Bielen's contemplative still life and landscape paintings, and Michaud's paintings and mixed media pieces intimate landscapes imbued with color and energy.



Stanley Bielen, *Venetian Red*, 2014, oil on paper / mounted, 7 5/8 x 6 1/8 in.

TEACHING



ADMISSIONS AND FINANCIAL AID

New enrollment for fall 2014:

Cert/BFA	51
Post-Bacc	8
MFA	39

103 new PAFA students enrolled from 24 states and 7 countries, including the Republic of China, Jordan, Iran, United Emirates, Republic of Korea, United Kingdom, and France.

Our marketing and recruiting activities, including a new website, combined with our PAFA at Park Towne Place initiative, have positioned us for continued success in attracting the strongest students and improving PAFA's retention.

PAFA recruiting efforts increased significantly this year. Having a dedicated staff member with primary oversight of our high school teacher/student audiences has resulted in our being able to attend a greater number of regional high school visits and college fairs, as well as an increase in the number of on-campus recruiting events we attended.

For spring 2015, seven new transfer students enrolled.

Inquiry totals among all programs were up from 2,057 in 2014 to 2,867 for 2015. Applications and admits were up by 5 percent.

Tuition and fees for fiscal year 2015-16:

	Tuition	Fees
Cert/BFA	\$32,960	\$ 1,450 – 1,550
Post-Bacc	\$34,960	\$ 1,450
MFA	\$37,482	\$ 1,450

The Office of Admissions launched a significant international recruiting effort this year by participating in the P-Review International Forum events in Asia and Mexico. Admissions representatives reviewed portfolios in the following cities: Shenzhen, Beijing, Shanghai, Hong Kong, Guangzhou, Mexico City, Monterrey, and Guadalajara.

During this recruiting season, we received a generous gift from the Maguire Foundation, which allowed us to offer three new full-tuition scholarships. These awards are called the James J. and Frances M. Maguire Scholarship for Artistic Excellence.

Starting in the 2016 Admissions cycle, PAFA will become one of only six AICAD schools that are part of the Common Application. Being included on this application will make us visible to many students who may not have heard of PAFA. We are expected to significantly increase our application numbers, which will also result in a proportionate increase in selectivity.





STUDENT SERVICES

Our student programming continued with a dynamic and varied schedule. Students enjoyed the annual hayride, Winter Bash and other relaxing student programming. Popular community service projects included the Martin Luther King, Jr. day of service in conjunction with Germantown Friends School, and a visit to St. Christopher's Hospital for Children for some art-making projects with the children. And we were delighted to host the first joint show with Philly Art Schools – a new organization partnering local art schools to create community.



CAREER SERVICES

More than thirty Career Services presentations and workshops were offered, guiding students on professional skills, hosting alumni talks on career paths, and providing interest assessment testing. For the first time, PAFA offered workshops in photography, helping students document their work and prepare their images for websites, applications and gallery submissions. This year saw the second awarding of the Fine Arts Venture Fund, a competitive grant-giving process that helped educate students on applying for grants and presenting to funders, which resulted in fifteen student projects receiving crucial funding for art projects. We also awarded the first Anne Bryan Memorial Venture Fund to graduating student Fernando DeJesus. The Anne Bryan fund requires students to devise a plan and identify a mentor to help them launch their career as a professional artist. The student internship program included placements with PAFA museum staff and in the high school after-school program, as well as off-campus sites such as Spector Projects (for an exhibition at the Philadelphia Museum of Art), galleries around the city, and arts organizations ranging from The Jewish Film Festival to Recycled Artists in Residency, giving PAFA students valuable hands-on experience with a range of professionals.

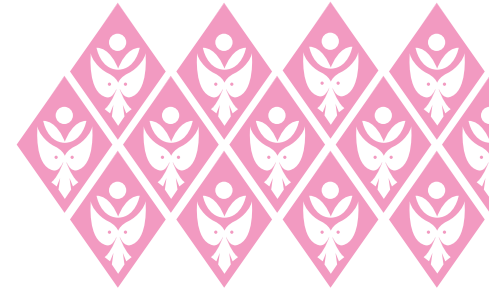
PAFA'S FINE ARTS VENTURE FUND

In 2015, the recipients of PAFA's Fine Arts Venture Fund received over \$22,000 to advance their artistic goals and develop their professional practices. The Venture Fund was established in 2014 to enable students to engage in a grant-seeking process in which they develop a unique art project, write a grant proposal and, for the semi-finalists in the process, present their work to funders.

This past year, 24 students submitted grant proposals, with funding requests ranging from several hundred to several thousand dollars. The Venture Fund awarded more than \$22,000 to 15 of the applicants. The 2015 awardees include painters, sculptors, installation artists and video-based artists at the undergraduate and graduate levels.

"We are inspired by the ideas presented, the artwork created and take pride in our students and in the tremendous difference a modest gift can make in the lives of working artists. We invite others to join us in our investment in PAFA's talent," said Anne McCollum, Venture Fund founder, and PAFA Trustee, Development Committee Co-Chair and Assistant Treasurer.

Student works created under the auspices of the Fine Arts Venture Fund were on display at PAFA last spring, and some were included in the *114th Annual Student Exhibition*.



MAGUIRE SCHOLARS AT PAFA

In 2015, PAFA entered the fifth year of its partnership with The Maguire Foundation's Maguire Scholars Program. Ten students received "last dollar" scholarship support, allowing them to enroll at PAFA and pursue their dream of obtaining a world class fine arts education. Maguire Scholars are required to maintain a B average and participate in community service projects in order to remain eligible for scholarship support.

In 2015, PAFA also awarded the first scholarships from the newly-established James J. & Frances M. Maguire Scholarship for Artistic Excellence. The James J. & Frances M. Maguire Scholarship for Artistic Excellence was established in 2014 with a gift of \$1 million from the Maguire

Foundation, and will ultimately support 11 undergraduate students with full tuition scholarships for the full course of their studies at PAFA. Three students were chosen to receive this scholarship in the Fall 2015 semester. Three additional scholarships will be awarded to incoming students in 2016 and 2017, and a final two students will receive the award in 2018.

The Maguire Foundation extended their incredible generosity even further this year by subsidizing tuition for 21 students to attend PAFA's Summer Academy, an intensive pre-college program for students serious about pursuing a higher education degree in the fine arts.





FACULTY AWARDS

The Excellence In Teaching Award (Certificate/BFA)
Michael Gallagher

The Excellence In Teaching Award (MFA)
Kate Moran

Faculty Achievement Award
William Scott Noel

COMMENCEMENT

In the graduation ceremonies of 2015, PAFA awarded 12 Certificates; 10 Bachelor of Fine Arts degree graduates; 6 Post-Baccalaureate certificates, and 37 Master of Fine Arts (MFA) degrees. Six students were awarded both a Certificate and a Bachelor of Fine Arts degree.

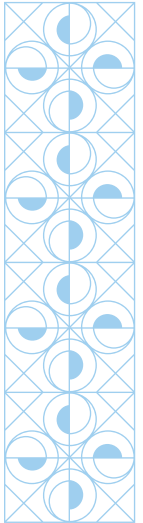
The commencement speaker, acclaimed sculptor Donald Lipski, was recognized for his installation work and large-scale works for public spaces.

Artist, filmmaker and PAFA alumnus David Lynch was awarded with an honorary Doctor of Fine Arts degree. Lynch acknowledged the award with a video message he made for the graduating class. In 2014, PAFA presented the critically acclaimed *David Lynch: The Unified Field*, the first major U.S. museum exhibition of Lynch's work.

The Distinguished Alumni Award was given to internationally recognized artist James Havard, who studied at PAFA from 1961 to 1965.

The 2015 Alumni Distinguished Service Award was presented to Hilarie V. Hawley, who served for 13 years as President of the Fellowship of the Pennsylvania Academy of the Fine Arts and is now its President Emerita.

Commencement ceremonies were followed by the public opening of the *114th Annual Student Exhibition (ASE)*.



STUDENT AWARDS

Travel Scholarships and Selected Prizes

William Emlen Cresson Memorial Travel Scholarship
Richard C. von Hess Memorial Travel Scholarship
Lewis S. Ware Memorial Travel Scholarship
J. Henry Schiedt Memorial Travel Scholarships

Women's Board Traveling Scholarship
Murray Dessner Memorial Graduate Travel Prize
Pennsylvania Governor's Award
Philadelphia Mayor's Award
Judith McGregor Caldwell Purchase Prize
for the PAFA Permanent Collection

Bennett Shipman
Chelsea Dombroskie
Kyle Babcock
Sarah Thompson Moore
Christopher Otto
Esme O'Brien
Emily Elliott
SaraNoa Mark
Madeline Peckenpaugh

Christina Ergemlidze

Merit Winners:

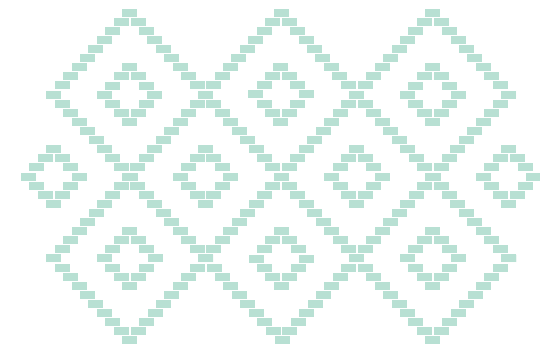
Donald R. Caldwell Scholarship
2014-2015

Elise Broadway
Erik Fuller
Esme O'Brien
Charles Alston
Isabella Defusco

2015-2016

James J. & Frances M. Maguire
Scholarship for
Artistic Excellence

Asiana Ouk
Liv Rodriguez
Sarah Warth



DEVELOPMENTS IN THE GRADUATE PROGRAMS

The academic year 2014-2015 saw continued growth of initiatives and developments in the graduate programs.

For the second consecutive year, students in the Master of Fine Arts program had the opportunity to exhibit in a New York City gallery. The June 2015 exhibition at 33 Orchard, *And Many More*, juried by Jodi Throckmorton, curator of contemporary art at PAFA, showcased the work of Nadine Beauharnois, Mingfei Cui, Sara Fry, Sean Hildreth, Morgan R. Hobbs, Mary Claire Ramirez, Marcelle Reinecke, Shane Smith, and Julie Thompson.

Exhibiting painting, video, mixed media, photography, and sculpture, the group exemplified the multi-disciplinary and conceptual nature of an MFA degree at PAFA. *And Many More* received positive reviews from art critics at outlets including *Two Coats of Paint*, *Artcritical*, and *Artnet*.

Read Lockhart, Mary McCann, and Tiffany Tate, recipients of the MFA Faculty Exhibition Award for June 2015, exhibited their work in the School of Fine Arts Gallery exhibition *feast famine*. The exhibition was complemented by events including a panel discussion with the three artists and other programming.

A partnership between PAFA and Avery Galleries continued in spring of 2015 with the third annual *5 to Watch* exhibition. The show highlighted the work of PAFA alumni Justin Johnson, Paul Metrinko, Samantha Mitchell, Thomas Paul Raggio, and Christina Weaver, and included an opening reception and artists' talk at Avery Galleries' location in Bryn Mawr, PA.



From the installation of *And Many More*, curated by Jodi Throckmorton.





ALUMNI ACHIEVEMENTS: SCULPTURE

From Philadelphia's sports stadium complex to New York's prestigious galleries to London's Trafalgar Square and beyond, PAFA sculpture alumni are making their mark in a variety of ways.

Stephen Layne (Cert. '94) and his 9-foot-tall monument to the late Philadelphia boxing legend "Smokin'" Joe Frazier made headlines nationwide.

"It's both physically and mentally exhausting work that requires a lot of small adjustments," Layne told a group of students during a visit to his studio. "You have to keep stepping back and looking over and over to see how you can make it better."

When they are not creating their own original art in their enormous studio and bronze foundry in North Philadelphia, Shane Stratton (Cert. '93) and Julia Stratton (Cert. '94) work to bring fellow sculptors' works to fruition — including bronze-casting *Smokin'* Joe for Layne, whom they have known since their

PAFA days. The Strattons also fabricated clay models and full-size plasters and rubber molds for *Gift Horse*, German-American artist Hans Haacke's sculpture now on the Fourth Plinth in London's Trafalgar Square.

"Philly is a great place for sculpture," Julia Stratton said. "People from New York come down and see our space and they just can't believe it."

Not far from the Strattons' workspace, Independent Foundry in the Port Richmond neighborhood cast *Gift Horse* in bronze, bone by bone. Among the PAFA graduates who work or worked at the foundry are Traction Company co-founder Zach Kainz (Cert. '07), Pavel Efremoff (Cert. '04), Steven Daily (Cert. '13) and Blaise Goldman (Cert. '12).

Recycled Artist In Residency (RAIR), an arts organization co-founded by Billy Dufala (Cert. '03) and with Lucia Thomé (Cert. '13) as its special programs

manager, recently won a Pew Center for Arts and Heritage grant to increase public awareness of the waste stream and the role of art in shaping social and environmental consciousness. Located onsite at a recycling company in Philadelphia, RAIR operates as an artist-in-residency program, a materials supplier for artists and designers, a voice for outreach and education, and a source for exhibitions.

Dufala, Thomé and 10 other current members of the Traction Company artist collective and studio showed their individual and collaborative sculptural pieces in the widely praised *Traction Company* exhibition at PAFA on view July 2 – Oct. 11, 2015.

Alison Stigora (MFA '07) and Jordan Griska (Cert. '08) were recently selected to create prototype sculptures for the Schuylkill River Trail. Griska, whose *Grumman Greenhouse* stands on PAFA's Lenfest Plaza, had his acrylic sculpture *Dolos* on view at Socrates Sculpture Park in New York, while Sarah Peters' (Cert. '95) recent exhibition of bronze sculptures at New York's Eleven Rivington gallery was praised by *The New York Times'* Ken Johnson as scoring "an aesthetic hat trick: making works that appear antique, Modern and Post-Modern all at once."

Former students say PAFA's sculpture alumni are part of a close-knit community that is beneficial for everyone.

"The people you meet at PAFA, you never know, they might be your working partners down the road," Julia Stratton said.



APPOINTMENT OF DEAN CLINT JUKKALA & FAREWELL TO JEFF CARR

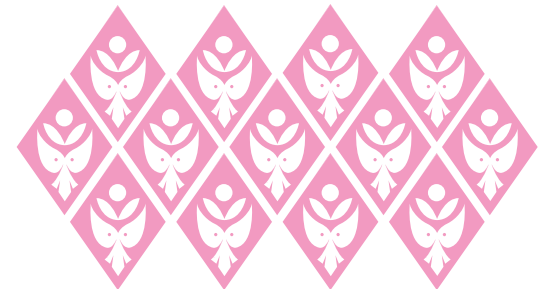


Clint Jukkala, formerly the Chair of Graduate Programs, was chosen as PAFA's new Dean of the School of Fine Arts after a nationwide search. In his former position, Jukkala spearheaded initiatives including a New York gallery exhibition of Master of Fine Arts students' work and growing the Visiting Artists Program by bringing internationally recognized artists to campus for lectures and critiques.

He also was instrumental in developing the new Low-Residency MFA program. PAFA President and CEO David R. Brigham said Jukkala was chosen because of his energy and his vision for the future of the school, as well as his demonstrated leadership of PAFA's graduate programs.

After a successful tenure of 12 years as Dean of Academic Affairs and then Dean of the School of Fine Arts, **Jeffrey Carr** stepped down from his position in July. Since his arrival in 2003, Dean Carr articulated a vision of a 21st-century fine arts education grounded in PAFA's long-held strengths in drawing, painting, printmaking and sculpture.

Dean Carr's tenure was marked by substantial renewal and growth in PAFA's programs, including the introduction of a Drawing major in 2006 that has recently been made a Department; the introduction of PAFA's first BFA program in 2008 and the creation of a department of liberal arts in 2009; the expansion of the Masters of Fine Arts programs; the attainment of both NASAD and Middle States accreditation; and most recently, the introduction of a Low-Residency Masters of Fine Arts program and an undergraduate program in Fine Arts Illustration.



COMMUNITY EDUCATION

FAMILY PROGRAMS

Homeschool Workshops

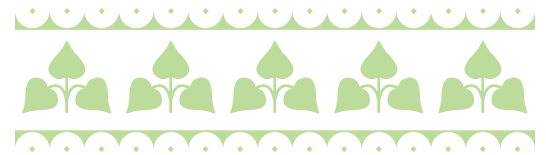
Through monthly programming for families who homeschool their children, over 200 family members participated over the course of the year and developed a consistent network of art enthusiasts that averaged in ages 5 to 11 years old.

Family Arts Academy

PAFA's flagship program for family audiences continued offering Sunday afternoon workshops for the whole family throughout the school year. Thanks to generous funding from PNC Arts Alive, PAFA was able to offer all 33 workshops at the museum free of charge to all participants and to provide 65 free community workshops at locations all over the city. Sponsorship also allowed PAFA to host an annual Family Festival in October, in celebration of art, families and the start of a new school year, and to provide free buses to partners around the city.

PAFA Art Camp

PAFA's summer and spring break camp programs continued to flourish and provide an important way to engage with families during out-of-school time. In summer 2014, 838 campers, ages 5 to 15, attended PAFA's art camps, including camps specializing in Animation, Graphic Novels, Painting and Puppetry. Each week of camp ended with an exhibition and reception for the whole family in PAFA's historic Cast Hall. PAFA was also able to offer need-based scholarships to 30 deserving students from around the area.



K-12 PROGRAMS

School Group Visits and Outreach

PAFA art educators provided programming for over 14,000 school-age children, visiting classrooms around the region and facilitating 211 field trips for area school groups. PAFA also held five professional development workshops for area teachers to help them incorporate the visual arts, and PAFA's extraordinary collections and exhibitions specifically, into their classroom teaching. Pre-Kindergarten tours and Special Audience tours were offered to schools which provided hands-on, interactive gallery activities with a multi-sensory focus.

Leadership Education and Development (LEAD) for Teens

Thanks to support from the Barra Foundation, PAFA has greatly expanded the scope of the LEAD program, which includes the Student Docent Program (SDP) and PAFA's new Youth Council (YC). The highly successful SDP expanded to nine partner schools and saw 68 students graduate in the FY15 year. Additionally, over 80 students and their family members returned to PAFA at the end of the year for a graduation celebration, where it was learned that one

student accepted admission into PAFA's BFA program and another had enrolled in Summer Academy. Pre-registration for the FY16 SDP was at its highest.

The inaugural year of the Youth Council saw a diverse group of area high school students organize and plan exciting public events, effectively creating a voice and space for teens within PAFA's museum. Students from both programs were eligible to apply for paid summer employment within the Museum Education Department, reinforcing PAFA's commitment to providing teens with meaningful leadership and mentoring opportunities. PAFA's LEAD program continues to operate in partnership with the Greater Philadelphia Cultural Alliance's STAMP (Students at Museums in Philly) program, which gives over 11,000 high school students free admission to participating museums.

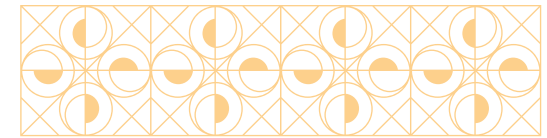
School and Community Partnership

PAFA continued its successful partnership with Isaac A. Sheppard Elementary School and expanded its partnership to the nearby Julia de Burgos School, allowing over 700 students to visit PAFA on field trips

and to receive more than 50 outreach lessons in classrooms. PAFA's investment in the North Kensington community was strengthened by its new partnership with Taller Puertorriqueño, and a May festival, celebrating the partnership and the Latino community, attracting over 150 community members to the museum. PAFA also contracted a bi-lingual art therapist who held workshops for over 60 parents and bused over 100 families to Family Arts Academy workshops at the museum on Sundays. PAFA provided professional development workshops for teachers to incorporate visual art into their curricula, holding workshops at the local library, and working with Art Island resident artists to help students at Julia de Burgos School handcraft their own books and write their personal stories.

PAFA continues to be committed to this new initiative that uses art to build community, empower parents, and support student creativity in one of Philadelphia's most challenged neighborhoods.





ADULT PROGRAMS

Traveling Lecture Series

Delivered by PAFA's museum education department and curatorial staff, these lectures provided programming for over 2,000 participants across the region during FY15.

Art at Lunch

For over 20 years, this free lunchtime lecture series has provided an opportunity for the public as well as PAFA students and members to bring new dimension to PAFA's collections, exhibitions, and interests in American Art. In FY15, 22 lectures brought 1,175 visitors to the museum to be engaged with art and artists at PAFA.

Art in Process

Launched in January of 2015, PAFA began its first weekly evening hours series entitled Art in Process. Every Wednesday from 5 to 9 p.m., members of the public and the PAFA community are welcomed to the galleries to enjoy programming that provides an in-depth look at PAFA and the creative process. In the last 6 months of FY15, Art in Process welcomed over 2,000 visitors to tours, artists talks, professional development panels, alumni roundtable conversations and more. Expanding PAFA's programming allowed for more opportunities to grow partnerships with organizations across the region, including Philadelphia Sculptors, Philadelphia Mural Arts Program and The Rosenbach Museum and Library.

Exhibition Programming

David Lynch: The Unified Field

Presenting the fine art of famed director and PAFA alumnus David Lynch, PAFA took advantage of the extraordinary opportunity to connect with new audiences through one-of-a-kind programming. Exploring the themes in David Lynch's work, visitors experienced a wide range of multidisciplinary interactive programs, such as walking tours through Philadelphia's "Eraserhood", a concert exploring the music of Lynch's film work performed by local bands, A "peek" at Twin Peaks with actress Catherine Coulson from the TV series, and more. Capstoning the exhibition was the PAFA Film Project, a film contest for emerging video artists juried by Lynch himself and resulting in a sold out premiere of winning films in January. During the 4 months of the exhibition, PAFA and partner organizations engaged over 2,000 fans of Lynch's multifaceted artwork.

The Artist's Garden: American Impressionism and the Gardening Movement, 1888 – 1920

In the spring of 2015, PAFA shifted gears to focus on the historical significance of American Impressionism at the turn of the 20th century. Hosting programs related to all aspects of art and gardens, audiences of all ages were invited to discover the influence of gardens on the culture of the time period. 4,000+ program participants experienced the exhibition through family programs, school tours and outreach, walking tours, hands on art making workshops, a flower arranging workshop, and a mother's day brunch. The exhibition culminated with a daylong symposium entitled "Artists and Gardens", hosted at PAFA and the Arboretum at the Barnes Foundation, and explored a new program format that included a full day of tours, scholarly lectures, and garden exploration.



ADULT PROGRAMS // CONTINUING EDUCATION

In FY 15, the Continuing Education (CE) program served a record 1,740 students. Courses are offered during weekdays, evenings and weekends over three semesters a year: fall, spring and summer.

The CE Summer Academy for High School Students is PAFA's five-week pre-college program, serving as an important feeder to PAFA's Certificate/BFA programs. Additionally, stand-alone courses for high school students in drawing, painting, drawing for comic books and animation, illustration, and sculpture are offered in the summer, fall and spring.

A new High School Program Director was hired FY 15, reporting to both CE and Admissions departments, to recruit new students and integrate and grow PAFA's high school program offerings across the institution. Under the new director, summer high

school enrollment reached 140, an increase of 112 percent over summer 2014.

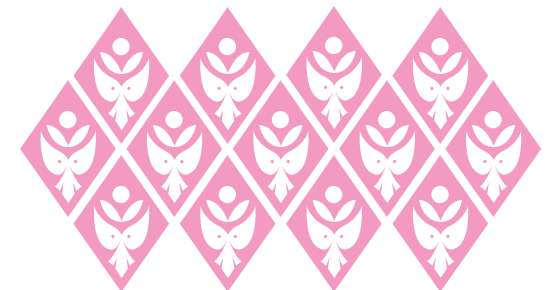
The CE program also featured weekend Master Classes, offering students the opportunity to work with renowned artists, including notable PAFA alumni. Artists who participated included Elizabeth Osborne, Dan Miller, Stuart Shils, Christine Lafuente, Jan Baltzell, Ellen Eagle and Juliette Aristides, attracted over 150 students. Famed illustrator and portraitist Everett Raymond Kinstler gave a slide talk about his long and illustrious career in October. PAFA faculty member Joe Sweeney held a weeklong plein air workshop in St. George's Bermuda in May.

The CE Summer Studio/Critique Program offers artists and educators a private PAFA studio, weekly critiques on their artwork from noted artists and

art-world professionals, as well as the support and interaction of an artistic community. The program is also a feeder for PAFA full-time programs. Critics in 2015 included Neysa Grassi, Alex Baker, Stuart Shils, Anne Canfield, Patricia Traub and James Dupree.

In FY 15 CE began offering art courses for those with memory loss and their care partners, held in partnership with ARTZ/Artists for Alzheimer's Philadelphia. Studio courses are taught by Dona Duncan, registered art therapist and president of the PAFA docents.

In partnership with Morris Arboretum, CE held the exhibition *Artists in the Garden: PAFA at Morris Arboretum*, featuring artwork by PAFA alumni, faculty and students, curated by PAFA Professor Jill A. Rupinski.



ADULT PROGRAMS: REVIEW PANEL PHILADELPHIA

Inspired by the popular series of public programs founded in 2004 at the National Academy Museum and moderated by artcritical.com's David Cohen, The Review Panel *Philadelphia* creates an informed dialogue about Philadelphia's contemporary art and artists and connects students and the public with the region's arts community.

Recent guest panelists have included Karen Wilkin, Astrid Bowlby, Edith Newhall, David Dempewolf, Judith Stein, Joan Waltemath, Paddy Johnson, Michael Gallagher, Mario Naves, and Scott Noel.

A yearly series of four panel discussions, The Review Panel *Philadelphia* aims to increase the visibility of the city's contemporary art exhibitions and awareness of aesthetic issues, drawing upon PAFA's intellectual and artistic leadership in the Philadelphia arts community and beyond.

Recent panels have discussed Philadelphia exhibitions by artists including Anna Betbeze, Jane Irish, Martha Groome, Shelley Spector, Paul Lee, Shelly Silver, Robert Taplin, Nicole Eisenman, and John Moore.



ADULT PROGRAMS: VISITING ARTISTS PROGRAM

This student-run free program brings an outstanding roster of local, national and international artists to PAFA each semester for lectures, critiques, performances and workshops. The program exposes students to a range of artistic approaches and fosters discussion about contemporary art and ideas.

Summer 2015

Shelley Spector is a respected artist, innovative gallery owner, and champion of emerging talent. Her recent solo museum exhibition, *Keep the Home Fires Burning*, was an installation of wood and textile-based sculpture that reflects on the universal quest for connectedness.

Lynn Palewicz's work is interdisciplinary with a creative process that often involves photographing handmade objects of her creation. Her work mostly deals with the human figure (specifically her body) and has recently shifted to include the architectural spaces of her home.

Claire Sherman paints from subjects that range from sheer rock walls to the California coastal redwoods. Her paintings represent a claustrophobic and unstable world through a perspective that shimmies between representation and abstraction.

Anne Harris is the originator of *The Mind's I* -- a collaborative drawing project designed to investigate the complexities of perception and self-perception through drawing.

Jane Irish's art invites confrontations between realms that rarely collide. Painting in egg tempera on large-scale canvas, paper and Tyvek, she infuses sumptuous interiors with memories of colonialism and orientalism.

Hilary Wilder makes paintings and installations that address how specific places are represented and, at times, fictionalized. The works often respond to misunderstandings about landscape or location, or to the simplification or cultivation of natural themes in art and design.

Spring 2015

Heather Rowe creates sculptural installations that are abstract and architectural. Using wood, glass, mirrors and wallpaper, Rowe activates negative and positive space to create a disorienting effect. Domestic spaces and objects are turned inside-out, harkening to narrative and enacting a near cinematic experience.

Andrzej Zielinski's richly colored paintings, sculptures, and prints take familiar aspects of technology as their subject matter. His work asks us to consider printers, laptops, cameras, and cell phones through the lens of traditional art-making methods such as painting and printmaking.

Gideon Bok is a highly regarded painter who uses his studio as an ever changing subject of his work and paints vibrant, lively paintings of distinct moments in time. Bok is a recipient of the 2004 John Simon Guggenheim Memorial Fellowship and lives and works in Camden, Maine.

Katherine Bradford is an intuitive painter and object maker known for her luminous and tactile paintings of ships, swimmers and divers. Bradford was on the MFA faculty at PAFA from 1997 to 2013. In 2011 she received a Guggenheim Fellowship and an American Academy of Arts and Letters Award.

Orit Hofshi combines printmaking, painting and drawing techniques to create large-scale works that often include elements of the landscape and the human form. Hofshi received her Certificate from PAFA in 1990 and has exhibited both nationally and internationally.

Marie Lorenz is an interdisciplinary artist who designs and builds boats that she uses to explore New York City waterways. She also collects objects found in the harbor and records them by printing, casting, or making videos.

Mary Reid Kelley works in collaboration with her husband Patrick Kelley. Language, literature and history inform their work, which combines video, poetry, animation, performance, and painting that are filled with punning wordplay.

Phoebe Washburn uses a large range of materials and heaps of refuse to create sculptures and sprawling site-specific structures that abound with inventiveness and intuitive logic.

Anne Lindberg works within a terrain where sculpture and drawing meet. She describes her work as tapping into a non-verbal physiological landscape of body and space, provoking emotional, visceral and perceptual responses.

Ellen Altfest paints exclusively from observation, describing plants, gourds, and male models in tight, sharply realistic detail. Her idiosyncratic approach to cropping and framing forces all subject matter to be seen from similar vantage points.

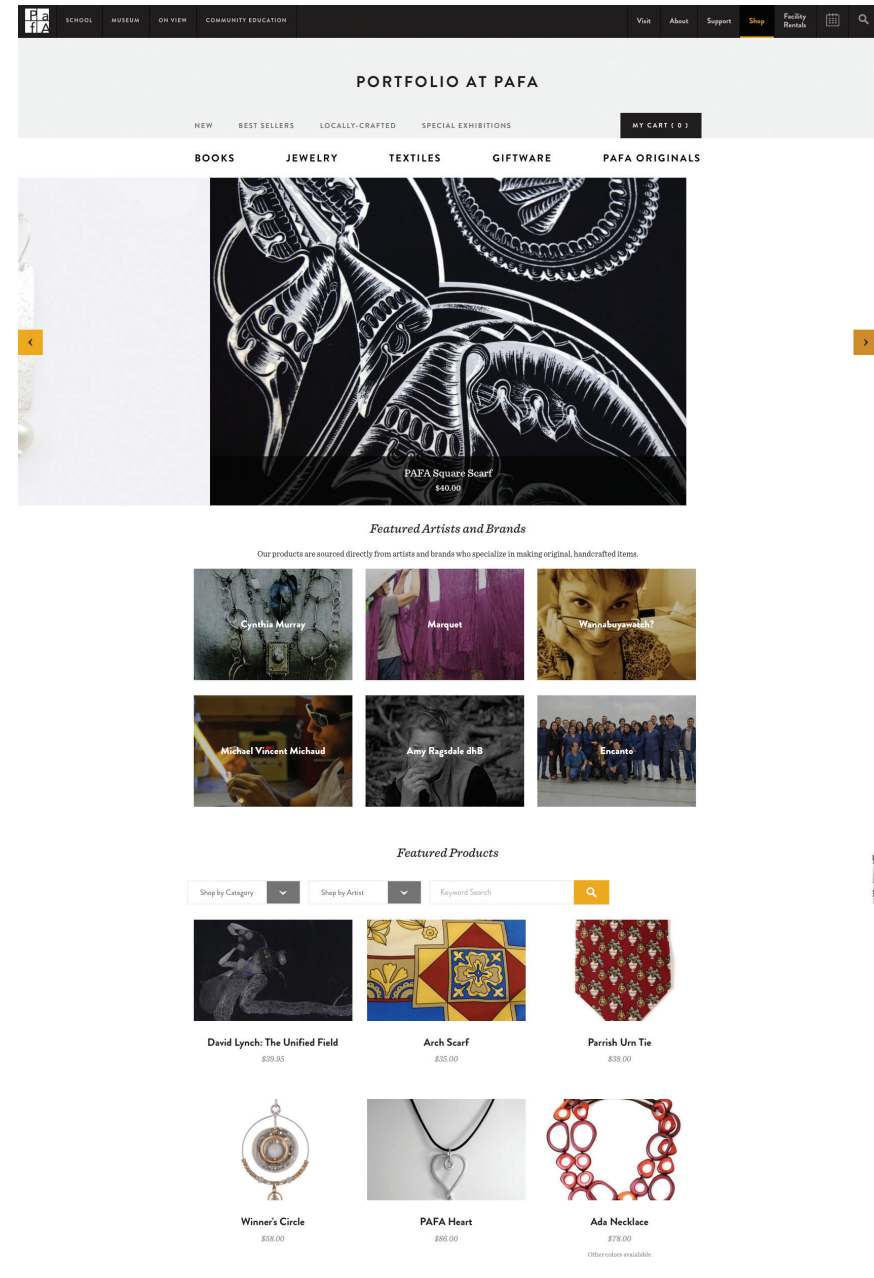
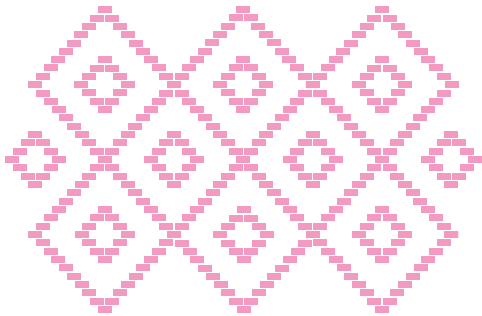


PAFA'S NEW WEBSITE

In February 2015, PAFA launched a new website to unify and brand its museum and school more strategically. Information about exhibitions and programs, as well as information about areas of study, faculty and students, is now easier than ever for the public to access and share on social media. The site was well-received by alumni, students, faculty, colleagues at other institutions, and the general public.

PAFA's new website is profoundly enhancing the institution's digital presence. It was designed to raise the online visibility of the museum and school, while underscoring their historical connection. The site's overall goals include raising awareness about PAFA's myriad programs, increasing attendance for exhibitions and events, increasing facility rentals, and boosting enrollment in the school.

Furthermore, the website has provided a new platform for e-commerce opportunities, including the Portfolio Online Store, which also launched last year. The primary objective of the new and improved online store is increasing overall sales, which is why the site features books, jewelry, textiles, giftware, and PAFA originals, as well as specials.



FINANCE



Financial Overview Statement of Financial Condition As of June 30, 2015 and 2014

	JUNE 30, 2015	JUNE 30, 2014
ASSETS		
Cash and cash equivalents	\$ 6,170,971	\$ 32,706,086
Accounts receivable	230,858	108,567
Contributions receivable	4,840,230	2,201,391
Prepaid expenses	544,125	456,071
Inventories	95,352	104,214
Land, buildings and equipment (net)	46,044,431	45,133,017
Investments	40,151,026	15,900,403
Beneficial interest in perpetual trusts	10,097,617	9,833,828
Funds held by trustee	-	700,695
Other assets	373,144	615,856
Total Assets	\$ 108,547,754	\$ 107,760,128
LIABILITIES AND FUND BALANCES		
Accounts payable and accrued expenses	\$ 1,733,550	\$ 1,143,827
Bonds and notes payable	21,000,000	18,750,000
Line of credit	580,000	2,200,000
Deferred revenue	1,260,710	1,664,845
Other liabilities	379,167	160,996
Total Liabilities	\$ 24,953,427	\$ 23,919,668
NET ASSETS		
Unrestricted net assets	\$ 55,255,739	\$ 57,116,793
Temporarily restricted net assets	2,574,552	1,295,297
Permanently restricted net assets	25,764,036	25,429,370
Total Net Assets	\$ 83,594,327	\$ 83,841,460
Total Liabilities and Net Assets	\$ 108,547,754	\$ 107,761,128



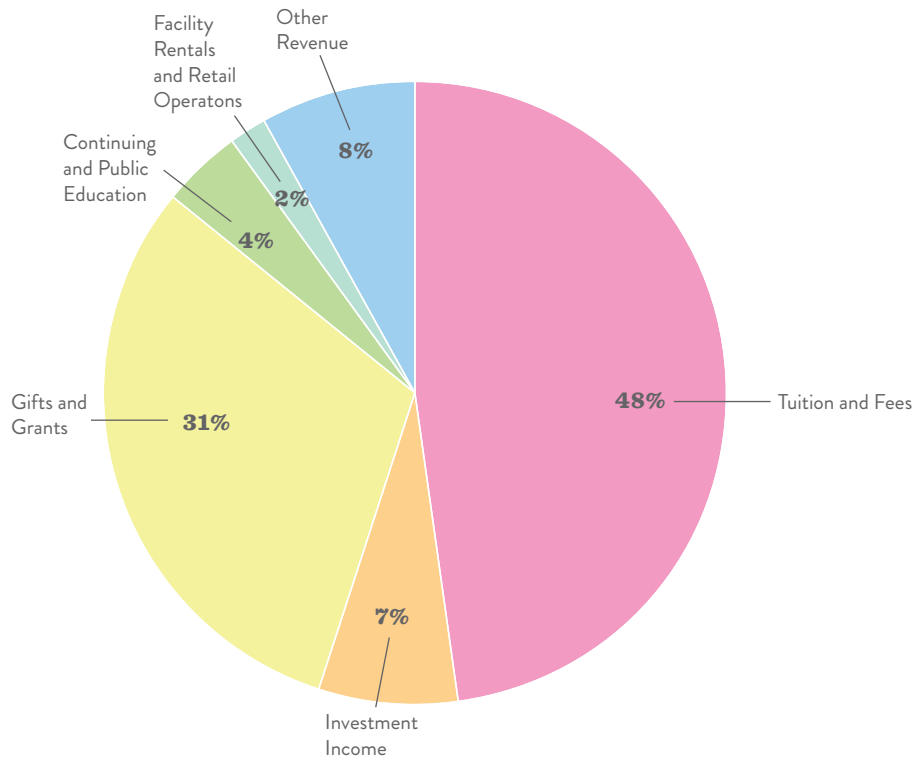
Financial Overview Statement of Unrestricted Revenues and Expenses For the Years Ended June 30, 2015 and 2014



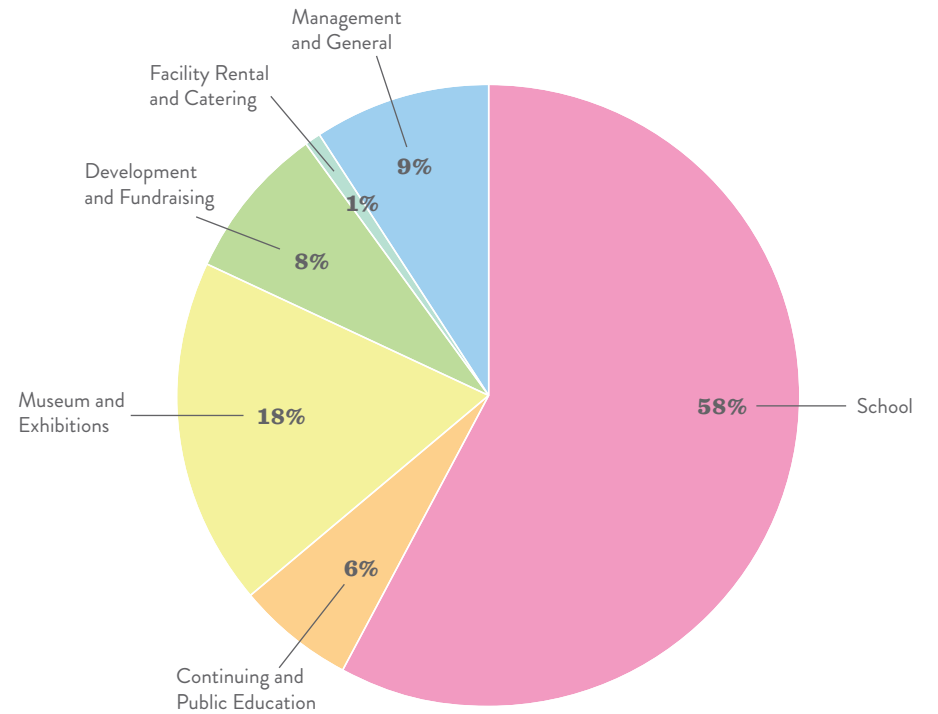
	JUNE 30, 2015	JUNE 30, 2014
REVENUES		
Tuition and fees	\$ 8,968,730	\$ 9,758,419
Investment income	1,382,385	1,057,042
Gifts and grants revenue	5,797,887	4,560,398
Continuing and public education	833,064	847,082
Facility rentals and retail operations	290,820	410,260
Other revenue	1,405,003	1,773,147
Total operating program, support and investment income	\$ 18,677,889	\$ 18,406,348
EXPENSES		
School operations	\$ 10,461,896	\$ 10,348,592
Continuing and public education	1,126,635	1,026,365
Museum and exhibitions	3,253,032	2,929,051
Development and fundraising	1,528,610	1,403,509
Facility rental and catering	160,198	199,612
Management and general	1,583,024	1,746,962
Total program and support expenses	\$ 18,113,395	\$ 17,654,091
Unrestricted net revenue before depreciation	\$ 564,494	\$ 752,257

2015

Operating Revenues \$18,677,889



Operating Expenses \$18,113,395



DEVELOPMENT

GRANTS HIGHLIGHTS

William Penn Foundation gave PAFA's top grant of 2014-15 to become the presenting sponsor of *David Lynch: The Unified Field*.

Peter Blume: Nature and Metamorphosis drew major support from The Henry Luce Foundation, the Mr. and Mrs. Raymond J. Horowitz Foundation, and the Boris Lurie Art Foundation.

The Artist's Garden: American Impressionism and the Garden Movement, 1887-1920 attracted an array of gifts and grants from both foundations and individuals, the largest from the Richard C. von Hess Foundation.

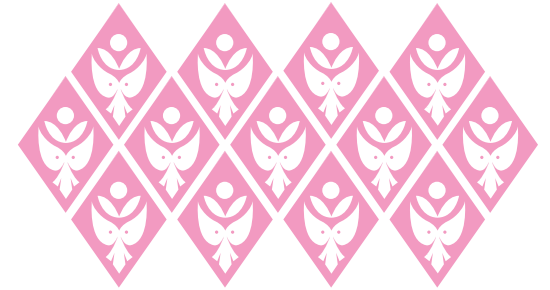
PAFA's LEAD Program for teens in 2014-15 was funded by a two-year grant from The Barra Foundation.

Government funding included two grants from the National Endowment for the Arts, supporting PAFA's museum education programs benefiting students, and the *Peter Blume* exhibition; a three-year grant from the U.S. Institute for Museum and Library Services supporting PAFA's School and Community Partnership Program; and a general operating support grant from the Pennsylvania Council on the Arts.



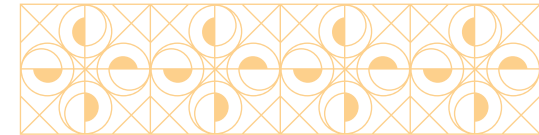
MEMBERSHIP

This year 3,540 general members were served and PAFA welcomed 585 new members. PAFA celebrated its First Annual Members Meeting and Appreciation Event this fall where more than 100 members gathered in PAFA's Historic Landmark Building for an informative evening presentation about the state of PAFA. Members continued to enjoy curator and faculty-led gallery tours and members attended the new series *Collecting 101*, designed to teach the basics of art collecting. PAFA increased community partnerships to provide discounts for PAFA members at local cultural institutions and to enable members from those institutions to receive discounted admission to the galleries.



PEALE CIRCLE

The Peale Circle, PAFA's leadership membership group, had another wonderful year with many varied opportunities to explore art, including exhibition opening receptions for the museum, as well as exclusive experiences with the school during Open Studio Night, the Annual Print Sale, and the *114th Annual Student Exhibition*.



Annual Art Exploration Trip to Los Angeles & Pasadena

Led by David R. Brigham, President and CEO, members enjoyed visits to select private collections, galleries, and artists' studios along with tours of the Gamble House, behind-the-scenes look at the Getty Conservation Lab, The Huntington Library and Botanical Gardens and a visit to Mark Bradford's studio and foundation.

Traction Company Studio Tour

Members welcomed Jodi Throckmorton, PAFA's new Curator of Contemporary Art, at Traction Company Studios in West Philadelphia. Guests enjoyed a preview of the summer 2015 exhibition and met the 12-person artist collective founded by, and entirely composed of, PAFA alumni, faculty, and staff.

James A. Michener Art Museum

The Peale Circle visited the Michener Art Museum and enjoyed a private tour of *The Artist in the Garden* (the companion show to PAFA's *The Artist's Garden*) with Kirsten Jensen, the Michener's Senior Curator of Exhibitions, and Anna O. Marley, PAFA's Curator of Historical American Art.



FUNDRAISING EVENTS

PAFA Benefit Auction

PAFA hosted an auction to raise funds for student scholarships featuring the work of PAFA faculty and alumni. David Weiss, Freeman's Senior Vice President, presided over the auction which included work by Elizabeth Osborne, Moe Brooker, Clint Jukkala, and Edgar Jerins.

Bacchanal 2014

Bacchanal, PAFA's flagship wine affair, was attended by over 350 wine and art lovers raising over \$550,000 to support PAFA student scholarships and education programs. The 16th annual wine auction and gala honored Jean-Charles Boisset. The event included a cocktail reception and wine tastings, a dinner and a live auction led by Sotheby's auctioneer Hugh Hildesley.

114th Annual Student Exhibition Preview Party

Hosted by PAFA's Women's Board, the Preview Party kicked off the historic *Annual Student Exhibition* and offers guests the first chance to view and purchase nearly 1,000 paintings, sculptures, works on paper, and installations created by PAFA's BFA students, third- and fourth-year Certificate program students, and MFA candidates, all on the verge of their professional careers. The student artists were present to discuss their work with guests. Students retained the majority of the purchase price of works sold, and all proceeds from the Preview Party supported PAFA student scholarships. Honorary Chairs for this year's event were Julie Jensen Bryan and Robert Bryan. Co-chairs of the event were Marianne Dean and Janice Peck.



MAJOR GIFT SUPPORTERS

\$50,000+

Mr. and Mrs. James H. Averill
Mr. and Mrs. William C. Buck
Linda Aversa-Caldwell and Donald R. Caldwell
Mr. and Mrs. Kevin F. Donohoe
Mrs. Lee Gunther-Mohr
Frances and Robert Kohler
Mr. and Mrs. Joel M. Koppelman
Mr. and Mrs. H.F. Lenfest
Mr. Theodore O. Rogers, Jr.
Mr. and Mrs. Henry B. du P. Smith

\$25,000 – \$49,999

Mr. Elliot H. Clark
Mr. Jonathan L. Cohen
Mr. Arthur Dantchik
Mr. and Mrs. Edward T. Harvey, Jr.
Mr. and Mrs. Frank Martucci
Ms. Crystal McRary and Mr. Raymond J. McGuire
Mr. and Mrs. John S. Middleton
Mr. and Mrs. Robert N. Spahr
Mr. Richard Vague

\$10,000 - \$24,999

Mr. and Mrs. Theodore Aronson
Mr. and Mrs. Thomas L. Bennett
Mr. and Mrs. James C. Biddle
Mr. and Mrs. Joseph A. Goldblum
Robert Horwitz and Catherine Redlich
Mr. and Mrs. N.D. Isen
Mr. and Mrs. Peter Leone
Dale Penneys Levy
Mr. and Mrs. Albert P. Matteo, Jr.
Ms. Anne Elizabeth McCollum
Mr. and Ms. Mark Moore
Mr. and Mrs. Herbert S. Riband, Jr.
Mr. Richard W. Snowden and Mr. Frederick
Holzerman
Ms. Marion Stroud Swingle*
Mr. and Mrs. Kenneth Woodcock

\$5,000 - \$9,999

Mr. Valentino D. Carlotti
Dr. Janice T. Gordon
Mr. and Mrs. Charles Harper
Mr. and Mrs. Raymond E. IX, Jr.
Mr. and Mrs. Michael Kalogris
Mr. and Mrs. Winston I. Lowe, Esq.
Mr. John M. Ryan and Ms. Mary G. Gregg
Mr. Jason Schoen
Mr. Alan P. Slack
Mr. and Mrs. Leonard A. Sylk
Mrs. Jane Winter Walker

FORMER TRUSTEE ASSOCIATION MEMBERS

Mr. Robert L. Byers
Mrs. Richard W. Graham
Mrs. Henry F. Harris
Ms. Gabriele W. Lee
Mr. Charles E. Mather III
Mrs. Mary MacGregor Mather
Mr. Peter McCausland
Mr. John M. Ryan
Mr. Samuel J. Savitz
Mr. Harold A. Sorgenti
Mr. Archbold D. van Beuren
Mr. Richard Worley
Mrs. James W. Zug

THE PEALE CIRCLE

Charles Willson Peale Circle

Mr. and Mrs. Kevin F. Donohoe
Mr. and Mrs. Edward T. Harvey, Jr.
Mr. and Mrs. H.F. Lenfest

Cecilia Beaux Circle

Julie and Jim Alexandre
Mr. and Mrs. James H. Averill
Mr. and Mrs. Roger H. Ballou
Mr. and Mrs. Thomas L. Bennett
Mr. and Mrs. James C. Biddle
Julie Jensen Bryan and Robert Bryan
Linda Aversa Caldwell and Donald R. Caldwell
Mr. and Mrs. Charles E. Chase
Mr. Elliot H. Clark
Jonathan L. Cohen
Dr. Monica E. Duvall DiLella and Mr. Daniel DiLella
Ms. Brandy Chieffi and Mr. William J. Farrell
Mr. and Mrs. Robert I. Friedman
Mr. and Mrs. John A. Fry
Mr. and Mrs. William P. Hankowsky
Ms. Susan M. Hendrickson
David Hoffman
Dorothy Mather IX and Raymond E. IX
Ro and Martin King
Sharon and Joel Koppelman
Mr. and Mrs. Brook J. Lenfest
Mr. and Mrs. Francis J. Leto
Mr. and Mrs. Winston I. Lowe
Mr. and Mrs. James J. Maguire
Mr. and Mrs. Brett Matteo
Ms. Anne E. McCollum
Mr. Jonathan H. Newman
Mr. and Mrs. Washburn S. Oberwager
Mr. James E. O'Neill and Mr. David A. Rubin
Mr. Thomas N. Pappas
Ms. Gretchen Roede and Mr. Richard Pedranti
Mr. and Mrs. Sashi Reddi
Sara Lomax-Reese and Timothy Reese

Mr. and Mrs. Herbert S. Riband, Jr.
Mr. Theodore O. Rogers, Jr.
Mr. and Mrs. Richard C. Rossello
Dr. Kelly Sanders and Mr. Steven L. Sanders
Mr. and Mrs. William H. Schorling
William A. Slaughter, Esq.
Mr. and Mrs. Henry B. du P. Smith
Mr. and Mrs. Robert N. Spahr
Mr. and Mrs. Leonard A. Sylk
Richard W. Vague

Thomas Eakins Circle

Lorraine and Benjamin Alexander
Mr. and Mrs. Reginald M. Browne
Mrs. Samuel M.V. Hamilton
Jeanne Ruddy and Victor Keen
Mr. and Mrs. Bruce E. Toll

Horace Pippin Circle

Anonymous
Mr. and Mrs. Robert Asher
Linda Seyda and Robert Boris
Mr. and Mrs. Richard M. Cole
Dr. Dorothy J. del Bueno
Ms. Heather Richards Evans
Freeman's
Mr. and Mrs. Bernard M. Gross
Darcy Allen and Richard Kipp
Mr. and Mrs. Leon L. Levy
Mr. and Mrs. John J. Nesbitt III
Mr. and Mrs. Thomas Russo
Mr. and Mrs. A. Morris Williams, Jr.

Violet Oakley Circle

Anonymous
Mr. and Mrs. John A. Affleck
Ms. Linda Lee Alter
Ms. Lynda Barness
Willo Carey and Peter A. Benoiel
Mr. and Mrs. George Brantz
Dr. and Mrs. David R. Brigham
Lois and Julian Brodsky
Mr. and Mrs. William C. Buck
Sheryl and William Bullitt
Mr. and Mrs. G. Theodore Burkett
Mr. and Mrs. Cummins Catherwood, Jr.
Christie's
Mr. Arthur Dantchik
Dr. Richard Davidson
Mr. and Mrs. Jerome F. Dean
Ms. Lee Ducat
Mr. and Mrs. John Durham
Ms. Emanuela Miller-Cooke and Mr. Avi Eden
Mrs. Helen P. Fala
Ms. Joan Miller Moran and Mr. William Fenza
Julia and David Fleischer

Ms. Deena Sara Gerson
Mr. and Mrs. David Glickstein
Mr. and Mrs. Joseph A. Goldblum
William and Joan Goldstein
Dr. Janice T. Gordon
Eugenie Logue and Gerhardt Herbert
Mr. and Mrs. Charles Kahn, Jr.
Mr. and Mrs. Roy Kaiser, Jr.
Mr. and Mrs. Michael Kalogris
Ms. Michelle S. Karbiner
Mr. and Mrs. Jules Kay
Ms. Caren Lambert
Dale Penneys Levy
Ms. Deborah G. DeLauro and Dr. Ted Lewis
Dr. Nancy Lisagor and Mr. Frank Lipsius
Mrs. Lawrence E. MacElree
Mr. and Ms. David G. Marshall
Mr. and Mrs. Thomas A. McCarthy
Mr. and Mrs. Rory McNeil
Mr. and Mrs. Frank J. Mechura
Ms. Nicki Nathan and Mr. Michael Metelits
Sandra and William Mezzanotte
Mr. and Mrs. Francis J. Mirabello
Mr. and Mrs. Kenneth Mitchell
Ms. Arlene Olson and Dr. Stanley Muravchick
Dr. and Mrs. J. Brien Murphy
Mr. W. Gresham O'Malley III
Mr. and Mrs. Dean C. Pappas
Mr. and Mrs. William C. Patterson
Barrie Trimmingham and David Pierson
Mr. and Mrs. Vicente Pita
Franz Rabauer and Brian Daggett
Mr. Edward A. Richards
Mr. and Mrs. J. Barton Riley
Mr. and Mrs. Franklyn Rodgers
Mr. and Mrs. Jeremy A. Rosenau
Mr. and Mrs. David Rubenstein
Mr. Charles E. Ryan
Mr. and Mrs. Howard J. Sacks
Nancy and Benjamin Shein
Dr. Willys Silvers
Mr. Alan P. Slack
Sotheby's
Mrs. Joly W. Stewart
Martin Stogniew
Dr. Bayard T. Storey
Keith and James B. Straw
Ms. Bryn Tamarkin
Alice Lea and Bill Tasman
Mr. and Mrs. Fabio Terlevich
Mr. and Mrs. Jay H. Tolson
Mr. Max Tuttleman
Mr. and Mrs. Michael Veloric
Dr. and Mrs. Thomas Vernon
Dr. Robert J. Wallner
Mary and Brock Weatherup

Dr. and Mrs. Sankey V. Williams
Mr. and Mrs. Allan D. Windt
Ms. Lisa M. Witomski and Mr. James A. Scott

BENEFACTOR MEMBERS

Mr. and Ms. Edward K. Asplundh
Mr. William J. Avery
Dr. and Mrs. Horace Barsh
Mr. Andrew F. Blittman
Mr. and Mrs. Anthony B. Creamer III
Mrs. Judith Creed and Mr. Robert Schwartz
Mr. Gregg R. Crumley
Mr. and Mrs. Jerome F. Dean
Mr. Daniel P. Devlin
Mrs. J. David Donahower
Mr. and Mrs. Samuel M. Earle
David F. Ertz and Kristin Mullaney
Ms. Marsha R. Friedman
Ms. Elizabeth Gemmill
Mr. and Mrs. Michael Greenwald
Drs. Joel and Linda Griska
Mr. David W. Haas
Mr. and Mrs. Leonard C. Haas
Mr. and Mrs. Francis A. Holloran Jr.
Mr. and Mrs. Marc Howard
Gilbert and Rebecca Kerlin
Ms. J. Jordan Klinefelter
Frances and Robert Kohler
Mr. and Mrs. Robert M. Krasne
Mr. and Mrs. Christopher Le Vine
Mr. Robert Locke
Ms. Susan Maguire
Jane and Bernard Mason
Ms. Kathleen D.B. McCoy
Ms. Anselene Morris
Ms. Janis O'Connor
Ms. Beatrice S. Pitcairn
Mr. and Mrs. Robert D. Schwarz, Jr.
Mrs. Karlyn Skipworth
Mr. and Mrs. F. Gordon Yasinow

PATRON MEMBERS

Ms. Bettina B. Aberant
Dr. Michael Abraham
Mr. Fred Allen Barfoot
Mr. Robert Beaty
Mr. Richard Beck and Mr. Robert Sher
Mr. and Mrs. Alvin Block
Mr. Bruce Boyle
Mr. and Mrs. Edwin Bronstein
Mr. and Mrs. David B. Brownlee
Mr. Michael P. Buckley
Mr. Ken Butera and Ms. Karol Wasylshyn
Ms. Christiane Casella and Mr. Stephen Dansky
Mr. and Mrs. Howard M. Casper
Mr. Lee A. Casper and Ms. Maureen Abrams

Mr. Ralph Citino
Mr. Jonathan Clark
Ms. Cissy Claypool
Mr. and Mrs. Richard Cohen
Mr. and Mrs. James L. Cooke
Ms. Mari Corson
Mr. Patrick P. Coyne
Mr. and Mrs. Thomas W. Daley
Mr. Fred Danziger
Fran Deitrich and Peter Capolino
Mr. and Mrs. Darrell L. DeMoss
Mr. and Mrs. Geoffrey D. Dennis
Ms. Edna F. Dick
Santo DiDonato and George Koch, Jr.
Ms. and Mr. Barbara Dilsheimer
Marianne Ruby and Gary Emmett
Dr. Bradley Fenton and Dr. Marie Savard
Ms. Eileen Figueroa
Ms. Ruth Fine
Mr. and Mrs. Walter L. Foulke
Mr. and Mrs. Robert A. Fox
Mr. and Mrs. Matthew I. Garfield
Ms. Susan Getze
Bruce Giantonio and James Leipold
Peter Goodman and Clara Callahan
Mr. and Mrs. James W. Harper
Mrs. J. Welles Henderson
Mr. and Mrs. Harry E. Hill III
Ms. Debra Hofreiter
Mr. and Ms. L. S. Illoway
Miss Jessica Izaguirre
Mr. William J.D. Jordan
Ms. Ellen Jane Jozoff
Mr. and Mrs. Henry K. Justi
Mr. and Mrs. Malcolm Keiter
Mr. and Mrs. Robert W. Kennedy
Mr. and Mrs. Martin Kreithen
Dr. Kenneth L. Kusmer
Dr. and Mrs. Marc S. Lapayowker
Ms. Jan Lewis
Joan W. Mackie
Mr. and Mrs. Thomas J. Mahoney
Mr. Peter Maxwell and Ms. Margaret Chew Dolan
Mr. Dennis C. McGlade
Mr. Michael D. McGrath and Ms. Meera Sundaram
Ms. Linda Montague
Mr. and Mrs. Robert H. Mundheim
Miss Susan Odessey and Ms. Ariel Coff
Ms. Sammi Paek
Dr. and Mrs. Joseph A. Pizzano
Mr. and Mrs. Aaron Polak, Esq.
Mr. Marshall A. Portnoy
Mr. and Mrs. Kurt W. Reiss
Mr. and Mrs. John S. Rodgers
Dan Rothermel and Michael Hairston
Dr. and Mrs. Stanley S. Schwartz

Ms. Antoinette Farrar Seymour
Mr. and Mrs. Robert G. Sharrar
Mrs. Marcia C. Shearer
Mr. and Mrs. Mark A. Sheehan
Keith D. Shively and Thomas Williams
Mr. Mark I. Simon and Mrs. Deborah K. Simon
Mr. Paul Smith
Mr. and Mrs. Maksym Szpilczak
Mr. and Mrs. John Tom
Dr. Regina Torsney-Durkin
Mr. and Ms. Jim Voigtlander
Mr. and Mrs. Tom Walther
Ms. Deborah R. Willig and Dr. Kathryn Casey
Prof. Christina Zwarg

FRIEND MEMBERS

Anonymous (3)
Dr. and Ms. Isaac Abir
Ms. Karen Adler
Ms. Elizabeth Albert
Ms. Beverly B. Alexandre
Mr. Hans-Ulrich Allemann
Mr. Peter Allen
Ms. C'Anne Anderson
Ms. Lauren Anderson and Ms. Katie Simko
Ms. Marina Angel
Mr. and Mrs. Tony Anthony
Dr. John and Kristina Antoniadis
Dr. Anna Arabindan-Kesson and
Mr. Hugh J. Kesson
Ms. Agnes Armao
Ms. Carol Avins and Mr. Ray Solomon
Ms. Ann Bacon
Ms. Lynda Baloché and Mr. William Tamblyn
Mr. and Mrs. Marc Barrist
Dr. Mark Baum
Mr. and Mrs. Thomas Beam
Heidi Nivling and Larry Becker
Mr. Richard L. Behr and Ms. Joan Behr
Ms. Carol Bell
Mr. and Mrs. David Bergman
Dr. and Mrs. Henry Berkowitz
Ms. Penny Berman
Dr. and Mrs. Sheldon M. Bernick
Ms. Sandra M. Berwind
Ms. Rebecca Bien
Mr. and Mrs. Charles J. Bloom
Ms. Joan Botto
Ms. Cynthia Boughton
Julia A. and Arnold W. Bradburd
Mr. John Braddock
Mr. John M. Briggs
Ms. Debra G. Brodsky
Dr. Dorothy M. Brown
Mr. Donald Bruno
Ms. Kristen Buck

Mr. and Mrs. Michael Budin
Mrs. Laura T. Bullitt
Ms. Kathryn K. Burchinal
Dr. David R. Burns
Mr. Walton C. Burwell
Ms. Lufay Butler
Ms. Sandra L. Cadwalader
Mr. Harry Camarda
Mr. Robert Camburn
Mr. Andrew B. Campbell
Jerome and Judith Caplan
Dr. William B. Carey
Mr. Rory Carlin
Mr. and Mrs. James Carnes
Ms. Kathleen Catanese
Ms. Teresa N. Cavenagh
Mr. and Mrs. Walter Ceglowski
Mr. William Celenza
Ms. Allison Chang
Nelly and Scott Childress
Mr. and Mrs. Edward Taws Claghorn
Ms. Barbara A W Clarke
Mrs. Cordelia E. Clement
Dr. and Mrs. Matthew J. Cohen
Mrs. Perky Cohen
Mr. and Mrs. John R. Collett
Nancy and David Colman
Dr. and Mrs. Peter Conn
Mr. and Mrs. John D. Connolly
Mr. and Mrs. Ray Cook
Mr. Chance Cook
Ms. Charlee Cook
Mr. and Ms. John H. Cooke
Ms. Francine Cooper and Mr. James Poole
Robert and Susan Couch
Mr. Fred Cowden
Ms. Virginia F. Crawford
Mr. and Mrs. Donald Cresswell
Dr. and Mrs. Donald H. Cresswell
Mr. Michael Crossman and Ms. Cindy Pomante
Mr. and Mrs. David Cummins
Mr. Elliott Curson
Mr. Dan Dagle
Mr. Joseph V. D'Alessandro
Mr. and Mrs. Gerard D'Alessio
Ms. Mary Daly and Mr. James L. Borders
Mr. and Mrs. John Davies
Mr. J. Barry Davis
Mr. Steven D. Davison and Ms. Christine M. Lewandoski
Mr. and Mrs. Charles de Rham
Mr. Michael DeAngelis and Ms. Katharine Davis
Margaret and David Dee
Dr. Cynthia DeLago
Mrs. David K. DeLong
Phyllis and Jay Denbo
Mr. Antelo Devereux

Dr. and Mr. Allitia DiBernardo
Tobey and Mark Dichter
Ms. Rhonda Dickey
Mrs. Willem K. Dikland
Mr. and Ms. Richard DiLullo
Mr. Louis Ditanna
Ms. Cheryl Dobleke
Ms. Julianne Domm and Mr. Charles Gershwin
Jay M. Donner and Wendell Jones
Ms. Janet S. Dougherty
Mr. and Mrs. Robert Douse
Mr. William F. Dowling
Dr. Andrew F. Drake
Mr. David Driscoll
Mr. and Mrs. Joseph Duckworth
Dan Dugan & Kathy Byrne-Dugan
Mr. and Mrs. Philip Dumont
Mr. and Mrs. Robert S. Duplessis
Mr. and Mrs. V. R. Eales
Mr. and Mrs. Van P. Eckes
Mr. and Mrs. Charles Edwards
Mr. and Mrs. Stewart J. Eisenberg
Mr. George H. Elser and Ms. Angela M. Scully
Ms. Karen Eriksen
Mr. Steven B. Erisoty
Mr. Joseph M. Evancich and Ms. Linda Gattinella
Mr. and Mrs. Leonard Evelev
Mr. James Fairburn
Mr. and Mrs. Dwight F. Fairchild
Ms. Die K. Fall
Ms. Carol R. Fautsch
Mrs. Donald L. Felley
Ms. Debra Felman and Dr. David Warshal
Mr. and Mrs. A. Carter Fergusson
Dr. and Ms. Norman L. Fienman
Mr. Bruce A. Finlayson
Mr. and Mrs. Douglas S. Fischer
Ms. Ruth Fischl
Ms. Roberta Claire Fiske
Ms. Faith Fitzgerald and Ms. Mary DeCecco
Mrs. Thomas Fleming
Ms. Alma Forman and Ms. Dianne Forman
Ms. Diane B. Foster
Dr. Kathleen A. Foster
Mrs. Anita M. Franchetti
Mr. Leonard A. Frank and Dr. Barbara Frank
Mr. Wayne Franks
Mr. and Mrs. William H. Frederick, Jr.
Mr. and Mrs. Charles C. Freyer
John Frommeyer
Ms. and Mr. Mary Catherine Frye
Ms. Mary Jane B. Fullam
Mr. Jeffrey P. Fuller and Ms. Martha M. Madigan
Ms. Mary Barton and Mr. Marty Fumo
Ms. Laurie Furman
Mr. and Ms. Anthony Galatola

Geoffrey and Laura Gardiner
Mr. and Mrs. Marvin Garfinkel
Ms. Margarita Alain Gay
Mr. and Ms. Glenn R. George
Mr. and Mrs. Walter U. Gerhard
Mr. and Mrs. David A. Gerson
Ms. Joan Gervato
Mr. and Mrs. Alex Gibbons
Ms. Roseann P. Gill
Mr. and Mrs. Derek Gillman
Ms. Judith B. Ginsberg
Dr. and Mrs. Robert L. Giuntoli, Sr.
Mr. Eduardo Glandt and Mr. George Ritchie
Ms. Elizabeth A. Glascott and Mr. Tom Macy
Mr. Eli Glatstein
Ms. Mary Goldman
Ms. Caroline Goodman
Dr. Jan Goplerud
Ms. Helena Grady and Mr. Joel Maruckeek
Mr. Cyrus W. Grandy
Mr. Todd P. Gregoire
Ms. Alexandra Griffen
Mr. J. Lawrence Grim, Jr.
Mr. Joseph Grinkewicz and Ms. Theresa
Willer-Grinkewicz
Ms. Leslie Grissom and Mr. William Poteau
Susan Grody and Marvin H. Grody, M.D.
Mr. Jeffery L. Grogan
Mr. and Ms. Lawrence Gross
Mr. and Mrs. Gary Grunder
Mr. Anthony Guiliano
Mrs. Mary B. Gutman
Mr. Robert Hakalski and Ms. Sonya Shiflet
Mr. and Mrs. Peter Hall
Mr. and Mrs. Harold Hambrose
Laura Rizio and James A. Hamilton III
Mr. and Mrs. David C. Hamme
Ms. Kathryn Harr
Mr. and Mrs. Robert Harries
Mr. and Mrs. W. H. Harrison
Mrs. Joan K. Harvey
Pamela and Brewster Hastings
Dr. and Mrs. Arthur B. Hattler
Ms. Janis Hawes
Mr. Thomas S. Heckman and Ms. Mary Jo Ashenfelter
Bernice J. Henry, Ph.D.
Dr. and Mrs. Steven G. Hess
Dr. A. Clinton Hewes
Mr. and Mrs. James H. Hill, Jr.
Mr. and Mrs. Charles A. Hilpl
Mr. and Mrs. Elam M. Hitchner III
Ms. Karen Hoepfinger
Ms. Gail A. Hoffman
Dr. and Mrs. J. David Hoffman
Ms. Barbara Holden
Esther and Bob Hornik

Helen and John F. Horstmann
Mrs. Susan K. Horty
Ms. Lynda K. Hubbell and Mr. Paul Hummer
Mr. and Mrs. Sigmund Humanski
Dr. and Mrs. Eric Hume
Mrs. Priscilla H. Huston
Mr. and Mrs. Thomas M. Hyndman, Jr.
Mr. Charles J. Ingersoll
Ms. Lynda Scher and Mr. Martin Isenberg
Mr. Jeffrey A. Jacobs
Mr. Robert M. Jaffee and Mrs. Barbara Granger
Dr. and Mrs. Larry Jameson
Mr. Edward Jankins
Mr. Barry W. Jeffries
Ms. Mary Johnson
Mr. and Mrs. James B. Johnston
Robin Lerner and James Jolinger
Hon. Babette Josephs
Ms. Nanette Kalani
Mr. Charles Kalick
Ms. Patricia Kamper
Ms. Ritva T. Kangasperko
Mr. Ronald M. Kaplan and Mrs. Barbara
Mendell-Kaplan
Fred Kaulbach and Lisa Armstrong
Catharine Keim
Mr. and Mrs. Morris C. Kellett
Mr. and Ms. Donald W. Kennedy
Mr. and Mrs. Edward A. Kennedy
Ms. Barbara Keough
Dolores Ketterer and Florence Fee
Mr. and Mrs. Bijan Khosrowshahi
Hiroko Kimura
Mr. and Mrs. Harold E. Klein
John and Beverley Kolb
Mr. and Mrs. William F. Koons
Mr. and Mrs. Isador Kranzel
Ms. Katherine Kruger
Dr. Peter Laibson
Mr. and Mrs. Jerrold S. Lakoff
Ms. Judith LaLonde
Elaine Landau
Ms. Jannie K. Lau and Mr. Todd C. Longworth
Mr. Thomas Lawler
Mr. and Mrs. William G. Lawlor
Mr. C. K. Leith II
Dr. Michael J. Leja
Ms. Susan Lelek
Ms. Susan Leontiades
Dr. and Mrs. David C. Levin
Mr. and Mrs. Ned Levine
Joseph Levinsky
Mr. William P. Liberi and Ms. Linda C. Wingate
Mr. and Mrs. Robert Libkind
Mr. Norman Lieberman
Mr. Joseph Lin and Mrs. Dahulun Lin

Mr. William A. Loeb
Mr. William Lotz
Mr. and Mrs. Spyros Loukatos
Ms. Adele Tobias Lynch
Ms. Marilyn Fishman and Mr. James MacElderry
Ms. Diana J. Mackie
Ms. Lana C. Maier and Mr. Eugene Maier
Mr. and Mrs. Lee Maimon
Ms. and Mr. Estelle Markel-Joyet
Miriam and Charles Marshall
Mr. and Mrs. Bruce Martin
Mr. Vincent Martinez
Mr. and Mrs. Sam Masarachia
Ms. Bridgette Mayer
Mr. Troy Memis
Ms. Shirley S. Mersky
Mr. and Mrs. Louis P. Meshon, Sr.
Ms. Constance Ferris Meyer
Mr. and Mrs. Richard E. Meyers
Dr. and Mrs. Howard A. Miller
Mr. Mark Miller
Mitchell and Shirley Miller
Ms. Anne Minich
Ms. Beatrice Mintz
Ross Mitchell
Dr. Barbara J. Mitnick
Mr. and Mrs. Edward A. Montgomery, Jr.
Mr. and Mrs. Michael Moore
Ms. Sara S. Moran
Mr. and Mrs. Michael Mormando
Mr. Robert J. Morrison
Ms. Susan Morvin Dinkins
Erik and Esther Murer
Mr. Richard J. Nabsany
Mr. and Mrs. Mark Naglee
Dr. and Mrs. David Naide
Mr. Neal Nathanson
Mr. Paul R. Nemeth and Ms. Jean Flood
Ms. Sara Nerken
Ms. Libby Newman
Roger and Carol Noble
Mr. and Mrs. Mark L. Novack
Mr. Paul T. Nutaitis
Dr. Christine I. Oaklander
Mrs. Lynn Oberfield
Ms. Martha S. O'Connor
Peter O'Dwyer
Dr. Patrick O'Kane and Ms. Jane Barry
Mr. and Mrs. Joseph D. Olivieri
Lyn Buccheit and Shaun O'Malley
Mrs. Marvin Orleans
Mr. Fred Oster and Ms. Catherine Jacobs
Mr. David A. Othmer and Ms. Maureen Barden
Mr. and Mrs. Mark Packer
Mr. and Mrs. Kendric T. Packer
Ms. Carla A. Pagliaro

Mr. Robert Palaima and Ms. Wendy Lebing
Mr. and Mrs. Francis Pallante
Mrs. Barbara Palmer
Mr. Alan Paston
Mr. and Mrs. James A. Paulson
Ms. Lynn A. Marks and Mr. Clifford Pearlman
Mr. Daniel Perkins and Ms. Patricia McKinney
Dr. Charles B. Peterson III
Mr. and Mrs. Alfred J. Pfaff
Ms. Aimee Pflieger
Dr. and Mrs. Henry Pitt
Mr. and Mrs. Andrew Pitts
Peter and Caroline Piven
Mr. Alan Pizzi
Ms. Rebecca Bien and Dr. David Poll
Ms. Jeanne Pond
Mr. and Mrs. Richard A. Powers
Mr. and Mrs. Edward B. Putnam
Mr. and Mrs. Mark Raab
Mrs. Olivia Rabe
Mr. and Mrs. Timothy Rabe
Mr. and Mrs. Julian Rackow
Margaret and Tom Ralph
Ms. Judith Ramirez
Mr. and Mrs. David Rasner
Kathleen C. Klee and David T. Rawson
Ms. Elise Redfield
Mr. and Mrs. Robert Regan
Ms. Gail Reilly
Ms. Linda Resnick and Mr. Stuart Levy
Dr. and Mrs. Myron E. Resnick
Ms. Nancy Resnick
Ms. Stephanie Resnick
Mr. Edward M. Resovsky
Mr. Brad Richards
Mr. and Mrs. Stephen C. Richman
Dr. and Mrs. Irwin Richman
Mrs. Wallace Ries
Mr. and Mrs. Marvin Riesenbach
Chao Lin and David Riz
Mr. Harry Roecker and Ms. Sabine Roecker
Ms. Charlotte Roede
Dr. and Mrs. Donald Rosato
Ms. Patricia A. Rosenberg
Mr. and Mrs. Richard N. Rosenfeld
Ms. Joellyn Ross and Mr. Abram Engelman
Mr. Marc Ross and Ms. Katherine Connor
Ms. Susan Ross
Ms. Anne Rothman and Mr. Mark Hollin
Mr. Dan Rottenberg
Ms. Harriet Rubenstein and Mr. Martin Brigham
Dr. Emanuel Rubin and Dr. Linda A. Haegele
Ms. Gwenn Rubin
Dr. and Mrs. Lionel F. Rubin
Mr. and Mr. Arturo A. Rucci
Mr. and Mrs. Jack Rudden

Mr. Ron Rumford
Dr. Ellier Russ
Mr. and Mrs. Vincent N. Russo
Phyllis Sabol and Frank Keaney
Mr. and Mrs. Norman N. Salvat
Dr. and Mrs. Richard B. Saul
Mr. Jesse Saunders and Mrs. Rikki Saunders
Mr. and Mrs. William T. Saunders
Ms. Lydia R. Savadove and Mr. Mark Weingrad
Dr. and Mrs. M. Harris Schaeffer
Ms. Barbara W. Schaff
Mr. Douglas Schaller and Mr. David Barquist
Mr. Lawrence Scharf and Mr. Paul Buttner
Mr. and Mrs. Irwin Scher
Mr. and Mrs. Stefan Schreffler
Mr. Theodore G. Schurr
Mr. and Dr. Harry Schwartz
Mrs. Rebecca R. Segall and Mr. Gregory L. Segall
Mr. Michael Shannon
Mr. and Mrs. Peter Shaw
Marcye Shayer, Ph.D.
Ms. Carol Nelson Shepherd
Mr. Kenneth L. Sheppard and Mrs. Kelly Shepperd
Ms. Susan Sheridan and Mr. Thomas Wallace
Mr. and Mrs. Jeffrey Shiffer
Mr. and Mrs. J. Thomas Showler
Mr. Andrew Siegel and Ms. Amy Sepinwall
Mr. James G. Siegel
Mr. and Mrs. Mark Siman
Ms. Lisa Simon and Mr. David Nugiel
Mr. Ron Simon and Ms. Diane Fuchs
Mr. Dolph Simons and Mr. Lawrence LeGar
Mr. Robert Singer
Corey and Jonne Smith
Mr. and Mrs. John Smyth, Jr.
Mr. and Mrs. Arthur Solmssen
Samuel and Rosanne Spear
Mr. Logan Speirs
Mr. Stan Sperlak
Tad Sperry and Ellen Harvey
Mr. Nicholas Stanley
Mr. Jonathan Stavin and Dr. George T. Lynch
Dr. Stephen P. Steinberg and Ms. Hedra Packman
Mr. and Mrs. Constantine Stephano
Ms. Alicia A. Sterling
Mr. John Stevens
Mr. and Mrs. Leonard Stevens
Dr. Kathleen Stewart and Mr. Jason Stewart
Mrs. Corinne R. Stone
Mr. and Mrs. Francis R. Strawbridge III
Ms. Katherine Suckle
Barbara Billings Supplee
Mr. and Mrs. Peter L. Svanda
Miss Helen L. Swain
Roberta Tarbell and Karl Miller
Mr. and Mrs. Jonathan B. Taylor

Mr. Robert M. Taylor
Mr. and Mrs. Russell J. Taylor
Ms. Anne M. Teitelman
Mr. Michael L. Templeton and Ms. Maureen A. Barrett
Robert and Terri Teti
Ms. Susan Thomas
Ms. Karen Thompson and Mr. Matthew Stover
Mr. and Mrs. David Thomsen
Charles Thrall and Sally Simmons
Nancy and Donald Todd
Mr. and Ms. Nicholas Torno
Mr. and Mrs. Daniel Traister
Mr. Robert Troia and Ms. Helen Troia-Shear
Dr. and Ms. Thomas Trojian
Dr. and Ms. Alan Troy
Mr. and Mrs. Steven M. Troy
Mr. and Mrs. David Tweedy
Christel and Wallis Urmenyhazi
Nadeen Van Tuyle and Gil Feinberg
Mr. Nathan Van Wooten
Ms. Kathleen Vick and Mr. Stephen Stack
Mr. and Mrs. Fred C. Vincent
Mr. and Mrs. David Virtue
Ms. Sandra Vondeling
Ms. Ann Walker
Ms. Suzanne Walker and Mr. Thomas Gilmore
Joan B. and William G. Walkup
Mr. and Mrs. Douglas C. Wallace
Ms. Stephanie Warakomski
Dr. and Mrs. Richard Wechsler
Mr. and Mrs. Joseph Weinstock
George H. Weiss M.D.
Mr. and Mrs. Raymond H. Welsh
Mr. and Mrs. Michael Wert
Mr. Alan Weschler
Miss Margaretta Wilcox and Ms. Ann Ricksecker
Mr. Horace E. Williams
Mr. Oliver P. Williams
Mr. and Mrs. David R. Wilmerding, Jr.
Mr. Daniel Wilson and Ms. Brianna Gallagher
Murray and Vera Wilson
Mrs. Penelope P. Wilson
Ms. Nancy Winkler and Mr. John Bryan
Mr. and Mrs. John B. Witmer
Dr. Judith E. Wolf and Dr. Howard J. Eisen
Mr. and Mrs. Harrison M. Wright
Mr. and Mrs. Clarence Z. Wurts
Mr. and Mrs. David Yost
Mrs. and Mr. Terry Zane
Mrs. Sybille Zeldin and Mr. Bill Brinkman
Ms. Laurie Zierer and Mr. George Tzanis
Ms. Maureen Zug

FAMILY MEMBERS

Anonymous (3)
Mr. and Mrs. Ramin Abbaszadeh
Dr. David J. Abrams
Ms. Erica Ackerman
Ms. Edith Agard
Mr. and Mrs. Anthony S. Aiello
Diane and John Alexanderson
Mr. and Mrs. James Allison
Mrs. Susan Amar
Ms. Tenley Ammerman
Mr. and Mrs. K B. Anderson
Mr. and Mrs. William D. Andrews
Samuel and Andrea Apicelli
Mr. Paul Arnold
Mr. and Mrs. Michael Ascher
Mr. and Mrs. Walter P. Babich
Carol and Richard Baca
Ms. Yvonne Bach and Mr. William Eisen
Ms. Donna E. Baker
Joy Baker and JoAnne Peace
Mr. Ethan F. Ball and Ms. Mary Bell Ball
Mrs. Ernestine Garnett-Banas and Mr. Raymond Banas
Michael Bannerman and Alayne Abrahams
Mr. and Mrs. Arnold A. Barr
Mrs. Charles M. Barringer
Martha and Alexis Barron
Mr. Matthew Bartholomew
Dr. and Mrs. Stanley S. Basicke
Mr. and Mrs. George P. Bassett III
Ms. Debra Basso and Mr. Wellington Davis
Mr. John Bateman
Marylynn and James Bates
Mr. Gregory Batker and Ms. Suet Lim
Mr. and Mrs. Stan Baum
Mr. and Ms. Timothy Baum
Ms. Mary Ivy Bayard
Mr. Anthony Bayne, Sr.
Bonnie Bealer
Drs. Sylvia Beck and Jay Federman
Ms. Flora L. Becker
Ms. Joan B. Bedell
Lazlo Beh and Julia Verkhohantsev
Mr. and Ms. Eugene W. Beier
Mrs. Kathie Bell and Mr. Jeffrey Graham Bell
Dennis and Sharyn Bellafiore
Dr. Priscilla Sands and Mr. John Berg
Ms. Deborah D Bergen
Mr. Harold Berger
Mr. & Mrs. Lawrence H. Berger
Mr. and Mrs. Raphael Bernstein
Mr. and Mrs. Greg Berzinsky
Mr. Keith Betten
Mr. and Mrs. Joseph Betz
Shari Bickel and Todd Cutler
Ms. Margaret M. Biddle

Ms. Victoria Bieber
Mr. and Mrs. Frank G. Binswanger Jr.
Mr. and Mrs. James Bishop
Mr. and Mrs. William T. Black, Jr.
Mr. and Mrs. Randy Blackwell
Ms. Barbara Blair and Mr. Joseph Robbins
Mr. and Mrs. Marshall Blalock
Ms. Barbara Bloom
Mr. and Mrs. Joseph Boardman
Ms. Ingrid Bogel and Mr. Steven Bogel
Jennifer and Luca Bogoni
Mr. and Ms. Allen J. Bommenre Jr.
Mr. J. Blaine Bonham and Mr. Richard Spitzborg
Ms. Carol Boslet and Ms. Claudia Gallagher
Mr. and Mrs. Harvey Boulay
Mr. Edward Boyd and Mr. Ken Tasker
Ms. Patricia T. Boyer
James and Elizabeth Bracken
Mr. and Mrs. Bramson
Mr. and Mrs. William Branan
Mr. James Brantley and Ms. Sande Webster
Mr. Edward Braun and Ms. Anne-Adele Wight
Ms. Michele Bregande
Mr. Jason Breinin and Ms. Molly Goldsmith
Mr. and Mrs. Stephen L. Breman
Mr. Sylvester Bretschneider
Ms. Mary Brewster and Mr. Frank T. Innes
Ms. Bonnie Brier and Mr. Bruce Rosenfield
Mr. and Mrs. Jim Briggs
Mr. Alvin Brothers
Ms. Ellie Brown
Mr. and Mrs. Michael Brown
Mr. and Mrs. Richard L. Brown
Ms. Shirley Brown
Dr. Marina S. Brownlee and Dr. Kevin Brownlee
Dennis and Linda Brunnn
Mr. and Mrs. John Bullock
Mr. and Mrs. Dean Burget
Mr. and Mrs. Joseph Burke
Ms. Diane Burko
Mr. and Mrs. Michael Burns
Mr. and Mrs. Michael T. Burns
Mr. and Mrs. Peter Burwasser
Ms. Heather Busovsky
Robert A. Busser
Mr. and Mrs. George I. Bustard
Ms. Dianne Butera and Mr. Allan Irving
Ms. Myrna Ann Butkovitz
Mr. and Mrs. Dan Butler
Mr. and Mrs. Robert Buttel
Mrs. Bessie Jordan-Byrd and Mr. Sandy L.V. Byrd
Ms. Virginia Byrd
Bruce and Barbara Byrne
Ms. Anne Callahan and Mr. Charles Croce
Ms. Elaine Camarda
Mr. and Mrs. David C. Campbell

Mr. Peter Cappelli
Ms. Jessica Cardwell
Mr. Thomas J. Cardwell and Mr. Randal Edelstein
Ms. Sandra Carleton
Ms. Elizabeth Carmalt
Mr. Kenneth F. Carobus and Ms. M. Faith Angell
Mr. Jeff Carpenter
Mr. and Mrs. Cornelius Carr
Mr. Terence Carroll
Dr. Thomas Carroll and Ms. Diane Eberhardt
Debbie and Alan Casnoff
Marguerite and John Celani
Frank Cellucci and Melissa Ann Pascucci
Noreen and Charles Cheleden
Mr. and Mrs. Joel L. Chinitz
Ms. Yvonne Chism-Peace and Ms. Tamara Peace
Mr. and Mrs. Jonathan Chorney
Dr. Luigi Cianci
Ms. Nancy Citrino
Ms. DeAnn P. Clancy
Mr. and Mrs. John Clark
Ms. Michele Clark
Dr. Christina Clay
Ms. Louise Clearfield
Mr. William Cody and Ms. Leslie Smalley
Mr. Frederick Cogen and Mrs. Anne Cogen
Nadine and Lewis Cohen
Ms. Elsie Stern and Mr. Steven Cohen
Dr. and Mrs. Elliott H. Coleman
Mr. and Mrs. Anton Collyer
Dr. Katrina A. Conard and Dr. Arthur Cooper
Mr. David Cooper
Ms. Lee Cooper van de Velde
Philip and Delorries Coppola
Philip Correll and Ronald Magill
Dr. Andrew T. Costarino, Jr.
Herbert and Christine Coulson
Nic and Amelia Coviello
Carl and Suzanne Cross
Ms. Karen G. Cunningham and Mr. John J. Cunningham
Dr. Sharon M. Curlik and Mr. K.C. Goodman
Mr. and Mrs. Herbert S. Cutler
Mr. John F. Daley and Ms. Melissa M. Mandell
Mr. and Mrs. Joseph D. Danciger
Ms. Dolores Danks
Dr. and Mrs. James L. Dannenberg
Mr. Charles H. Davis
Dr. and Mrs. Edward Davis
Mr. and Mrs. Kenneth Davis
Dr. and Ms. Yasemin Dayioglu-Yucel
Mr. and Ms. Chris Schmid
Ms. Linda S. Delengowski
Dr. Andrea DellaVecchia
Mr. and Mrs. Charles DeMirjian
Mr. and Mrs. Theo Dennis
Mrs. Margaret Denton

Mrs. Joanne R. Denworth and Mr. John Bower
Mr. and Mrs. Norman DeSouza
Mr. David R. DeVoe and Ms. Laura A. Lane
James and Linda Diamond
Jessica and Scott Diamond
Mr. and Mrs. Evan C. Dickerson, Jr.
Mr. John William Dickey
Mr. Marc T Dinardo
Kenneth and Janet Dirsra
Mr. and Ms. Corey Dixon
Mr. George Dixon and Ms. Janel Farley
Mr. William H. Donahue Jr.
Mr. and Mrs. John Donohue
Ms. Elisabeth Doolan
Mr. and Mrs. William F. Douglass
Meg and Michael Dowd
Mr. William P. Dowdall
Mr. Robert J. Dromboski and Dr. Laura B. Frank
Mr. and Mrs. Donald Duclow
Mr. John A. Dulik
Mr. B. J. Dunn and Mr. Richard Bennett
Mrs. Jacqueline Duris
Mr. and Mrs. John W. Durso
Mr. James E. Dyer, Jr.
Mr. and Mrs. Laurence Eagan
Ms. Joan M. Earley
Mr. and Mrs. David Eater
Alice and Craig Eaton
Ms. Judith Ebby
Ms. Olivia Edlund
Ms. Vivienne Ehret
Mr. and Ms. Harrison E. Eiteljorg II
Ms. Wendy Eiteljorg and Mr. Chris Strawbridge
Mr. Joseph W. Elliott
Mr. and Mrs. David Elliott
Mr. and Mrs. Robert Ellis
Mr. Robert Eskind and Ms. Debora Kodish
Ms. Janet E. Evans and Mr. James B. Corrigan
Dr. and Mrs. Walter C. Evans
Kathryn Evers and Allen Haas
Mr. Lee J. Faden
Mr. and Mrs. George C. Fago
Jeff and Reva S. Farenback-Brateman
Mr. Marco V. Farnese and Ms. Doris Schmauk
Ms. Nancy S. Feld and Mr. Ned E. Heltzer
Ms. Pamela Felice
Mr. James Fendya
Mr. and Mrs. Fennell
James Fennell and Henry Bernstein
Mr. and Mrs. Carl Feusahrens
Mr. and Mrs. John Fischer
Ms. Mary Fish and Mr. Mark Dembert
Dr. and Mrs. Aron Fisher
Robert S. Fisher, M.D.
Ms. Belinda Florence
Mr. and Mrs. William W. Fox, Jr.

Dr. and Mrs. Arthur Frank
Mr. Billtarridon Frankel
Mr. and Mrs. Richard G. Frankel
Mr. James Fratto and Ms. Jeanne Sigler
Dr. Barbara F. Freed and Mr. Alan Mittelman
Ms. Linda Freedman
Ms. Martha Freeman
Mr. and Mrs. Jerrold A. Frezel
Mr. Sidney Frommer and Ms. Barbara Shapiro
Mr. and Mrs. John H. Fryling
Walter and Deborah Fullam
Dr. Deborah A. Fuller and Ms. Elise Broadway
Marsha Galdi and George Herquet
Mr. Mark Gallant
Mr. and Mrs. Fernando Gallard
Ms. Sonya C. Garfinkle
Dr. and Mrs. Stephen J. Garza
Mr. and Mrs. James H. Gately
Mr. Paul Gaudini
Mr. Richard Gerber and Ms. Linda Sabatine
Dr. and Mrs. Robert Gerhardt
Mr. Thomas C. Gibson
Mr. and Mrs. John L. Giegerich, Jr.
Mr. and Mrs. Mark Gilbert
Mr. and Mrs. Dennis Gillespie
Mr. and Mrs. Bruce A. Gillespie
Mr. and Mrs. Owen Gilman
Ms. Heather Giordanella
Mr. and Mrs. John G. Gist
Dr. and Mrs. Julian L. Gladstone
Mr. and Mrs. William Glassman
Ms. Linda Gloss
Mr. and Mrs. Andrew Gluck
Mr. and Mrs. Henry Goehl, Jr.
Ms. Pamela Gofberg and Mr. Mark Feigus
Mr. and Mrs. Michael Goldman
Mr. and Mrs. David Gombac
Dr. and Mrs. Elihu N. Goren
Dr. and Mrs. Robert A. Goren
Dr. and Ms. Ronald Granieri
Ms. Shelley Green
Mr. and Mrs. Lon R. Greenberg
Mr. Marshall G. Greenberg and Ms. Adelaide Sugarman
Bruce Grohsgal and Joan Weinryb
Mr. and Mrs. Michael Gross
Mr. and Ms. Richard A. Gross
Mr. and Mrs. P. Richard Grove
Mr. and Mrs. Paul Guarnieri
Mr. and Mrs. Dupont Guerry
Carolyn Guss and Jim Heenehan
Mr. and Mrs. Charles J. Haberstroh, Jr.
Ms. Bonnie Halko
Denise Hall and Laurence Lang
Ms. Jennifer Hallgren
Dr. and Mrs. Paul Halpern

Li Halpern
Mrs. Gloria R. Hamilton
Mr. and Mrs. Kevin Haney
Mr. and Ms. Thomas Hardenbergh
Mr. and Mrs. Howard Harpel
Mr. Carl Harrington and Ms. Eleanor Levie
Mr. and Mrs. Gregory Harvey
Ms. Libby Harwitz and Dr. Burton Blender
Mr. Robert Hasson
Mr. and Mrs. John W. Hayden
E. Sherman Hayman and Mark Paul
Ms. Ingrid Heim
Mr. J. H. Henry and Mr. Robert DiNardo
Ms. Song Heo
Marsha and George Herquet
Mr. and Mrs. Garth Herrick
Dr. Marvin Herring
Dr. Wilma L. Heston
Mr. Joseph Hetrick
Mr. Gaylord Holder and Ms. Marianne Lipson
Mr. Rich Holmes
Mr. William Hooper
Ms. Susan Howatt and Mr. Paul B. Halpern
Mr. Stephen Hrabrick
Mr. Albert C. Hubbard and Mr. Christopher Deane
Mr. James T. Hughes
Ms. Deborah G. Imler and Mr. Allen H. Spencer
Dr. and Mrs. Andrew Indriso
Ms. Katherine Halton
Ms. Marlyn Ivory and Dr. Al Arouh
Mr. Frederick D. Jackes and Ms. Judith Adamson
Mr. and Mrs. Allen Jackson
Ms. Jeannette Jackson-Thompson
Mr. A. Robert Jaeger
Mr. and Mrs. Richard P. Jaffe
Mrs. Joan Jeruchim and Mr. Michel C. Jeruchim
Ms. Melissa Jester
Miss Elba Jimenez
Mr. and Mrs. Dodge Johnson
Marjorie and Jonathan Jones
John and Maxine Jones
Ms. Nicole Juday
Mr. and Mrs. Tom Judd
Ms. Deborah Kahn
Mr. and Mrs. Eirini Kalafatides
Mr. and Mrs. Jaan Kangilaski
Mr. Paul K. Kania
Susan Kanterman and Sean O'Leary
Ms. Dorothy G. Kapenstein
Mr. and Mrs. Alan J. Kaplan
Ms. Barbara H. Karapelou
Mr. and Mrs. Charles Karat
Greg and Jane Karns
Mr. and Mrs. Harvey L. Katuran
Dr. and Mrs. Julian Katz
Ellen Baxter and Robert Kavash

Dr. Beverly Keefer and Dr. Kelly Reene
Mr. Brian Keith and Ms. M. Celeste Simon
Alexandra Kendrick and Joseph Phillip
Mr. and Mrs. Andrew Kenis
Mr. and Mrs. Thomas Kennedy
Drs. Lawrence and Toba Kerson
Mr. Gary King and Ms. Eleanor Kazdan
Mr. and Mrs. Pete King
Mr. James Klein and Ms. Adeline Schultz
Dr. Kathleen Kline and Mr. Andrew Kline
Dr. Laurence S. Klugman and Ms. Bonnie F. Stone
M. Suzanne Knecht and Richard W. Knecht
Ms. Anne Hagele and Mr. Ken Kolodziej
Ms. Sharon Kopyc
Dr. and Mrs. Norman Koven
Mr. Steven Kraegel and Ms. Julia West
Dr. and Mrs. John J. Kravitz
Mr. and Mrs. Morrie E. Kricun
Mrs. Marita J. Krivda and Mr. T. M. Poxon
Mr. and Ms. John W. Ku
Kenneth Kulak and Kate Hovde
Jacqueline and Richard Kunin
Mr. William Kunze
Mr. and Mrs. David C. Kurkowski
Mr. and Mrs. Harry LaBelle
Mr. and Mrs. Anthony C. Lame
Ms. Susan Langmuir and Dr. Carmen Febo-San Miguel
Ms. Gwendolyn Cheyenne Lassiter
Ms. Janet Keller Laughlin
Maryann Laverty and Jeff Wilson
Mr. and Mrs. Richard Lawn
Ms. Ann C. Lebowitz and Mr. Mark N. Steinberger
Ms. and Mr. Jennifer Lee
Mrs. Kathryn Fligg Lee
Mr. and Mrs. Maurice D. Lee III
Dr. and Mrs. Roy T. Lefkoe
Mr. Eric Leichter
Tina Kluetmeier and Brian Leighton
Dr. and Mrs. Will Leland
Mr. and Mrs. Martin Levene
Ms. Sharon L. Levin and Mr. Robert Levin
Dr. Jerry D. Levitt and Dr. Julie Meranze-Levitt
Mr. and Mrs. Robert P. Levy
Mrs. and Mr. Lois Licht
Ms. Amanda D'Amico and Mr. Andrew Lichtman
Ms. Roberta Liebenberg
Mr. Howard Lieberman and Ms. Patricia Moore
Mr. John E. Linck and Ms. Ann T. Csink
Ms. Carla Pippin and Mr. Larry Lindsay
Mr. and Mrs. Stephen Lishnoff
Ms. Christa Lohbauer
Mr. and Mrs. David Loranger
Ms. Ellen Lube
Mr. and Mrs. Alexander Ludwig
Mr. Joseph C. Luglio
Mr. B.A. MacLean, Jr.

Dr. Horace MacVaugh, III
Josephine Madej and Thomas D. Rees
Dr. Evelyn P. Mahairas
Mrs. Virginia Mahoney
David Major and Evelyn Eskin
Mr. and Mrs. David H. Malarek
Ms. Jeannie Marcus
Ms. Mary Mark and Mr. John Ockerbloom
Mr. Bruce R. Marshall and Ms. Claire Sawyers
Mr. Steven Martorano
Mr. John Matthews and Ms. Nancy L. Bartley
Mr. Stephen B. Maurer and Ms. Frances Stier
Mr. and Mrs. David W. Maxey
Ms. Erin McCann
Dr. and Mrs. David McCarthy
Norman and Kathleen McClave
Mr. and Mrs. William F. McDonnell
Ms. Sarah A. McEneaney
Mr. and Mrs. Thomas McFeeley
Ms. Dagmar E. McGill
Ms. Kathryn R. McGinty
Mr. Thomas McGlaughlin
Mr. Brendan McGrath
Ms. Marilyn J. McHenry and Dr. Arthur S. Patchefsky
Mr. and Ms. Gary McKinnis
Mr. Robert E. McLaughlin and Ms. Elaine Beretz
Ms. Mary Hale Meyer and Dr. Susan V. McLeer
Mr. Jeffrey L. Meck and Ms. Odette Peters
Ms. Michelle Mesisca
Mr. and Mrs. James M. Meyer
Ms. Jessica Joy Meyer and Dr. Daniel D. Moseley
Mr. and Mrs. John Meyerson
Mr. Larry Miley
Dr. Lynn H. Miller and Mr. James McClelland
Ms. Randy Miller
Dr. and Mrs. Stanley J. Miller
M. M. Mills and R. L. Dalton
Dr. Elizabeth Milroy and Ms. Diana Post
Mr. John Moffa
Mr. and Mrs. Barry Mohr
Dr. and Ms. Rob Mooij
Mr. Jeffrey D. Moran
Dr. Ann Lee L. Morgan and Mr. Charles Gear
Mr. and Mrs. Bruce F. Morgan
Mr. and Mrs. Frank Mortimer
Mr. and Mrs. Samuel Mosca
Mr. John Muccitelli and Ms. Corinne Lagermasini
Dr. William R. Muir
Mr. Richard Mulhearn
Mr. William S. Mulherin
Ms. Elke Muller
Mr. Richard Munoz
Mr. and Mrs. Frederic Murphy
Mr. and Mrs. Frank J. Murray, Jr.
Mr. and Mrs. Hyman Myers
Ms. Judit Nagy-Eichelberger

Ms. Kim F. Nastick
Mr. and Mrs. James P. Neal
Donald Needham and Lynne Besen
Ms. Claire Needleman
Mrs. Harry R. Neilson, Jr.
Ms. Stephanie Nerges
Mr. and Mrs. Paul D. Neuwirth
Mr. and Mrs. F.L. Niccoletti
Ms. Elizabeth Niels
Ms. Kathleen Noonan and Mr. Jonathan Lipson
Mr. Nathan Novak and Ms. Adrian Alin
Joseph and Marie Nowak
Mr. and Mrs. Matthew Nowakowski, Jr.
Mr. and Mrs. Robert Oaks
Mr. and Mrs. Ramon R. Obod
Mr. Joseph A. O'Connor and Ms. Jackie Baldick
Dr. Lisa Okoniewski
Ms. Barbara Oldenhoff
Ms. Rebecca O'Leary
Dr. Craig Oliner and Ms. Alyson N. Owen
Mr. Samuel Olshin
Cynthia O'Neill and Mark Blume
Mr. Beau R. Ott
Mr. James A. Ounsworth, Esq.
Dr. Karen L. Overall and Dr. Arthur E. Dunham
Mr. and Mrs. Phillip Pacey
Georgia Paciocco-Moore
Mr. and Mrs. Nicholas Patruno
Anne and Ted Patterson
Mrs. Gerda Paumgarten and Mr. Larry Goldfarb
Mr. Martenson and Ms. Peluso
Dr. and Mrs. Clifford H. Pemberton
Mr. David Penkower and Ms. Namrata Narain
Felice and Dan Perlmutter
Mr. James Perretta
Mr. and Mrs. William M. Perthes
Mr. and Ms. Arthur J. Petrella II
Ms. Meagan Pharis
Ms. Eileen M. Phillips-Puma
Mr. and Mrs. Arthur Pielli
Mr. Anthony Pincherri
Mr. Edward S. Pinka
Ms. Shanlee Pollack
Ms. Marlene Porter
Dr. and Mrs. James Poupard
Mr. Robert Preuhs
Ms. Susan Price and Mr. Edwin Morley
Roger Prichard and Astrid Caruso
Mr. Richard A. Prigg and Ms. Ellen Lustgarten
Mr. and Mrs. Christopher Pronchik
Dr. Renee Quarterman
Ms. Marissa Quinn
Ms. and Mr. Elizabeth Racheva
Mr. Arthur L. Rack, Jr.
Ms. Christine M. Ramsey
Mr. Douglas W. Randall and Ms. Pat Hafft

Mr. and Mrs. Neil Randall
Mr. Paul E. Rapp and Ms. Adele Gilpin
Ms. Lisa Rau and Mr. Larry Krasner
Mr. Jeffrey R. Ray
Mr. and Mrs. George Reath, Jr.
Mr. and Mrs. Martin Reber
Mr. Boyd Reed
Cynthia and Max Reihmann
Ms. Gloria F. Reisman
Ms. Danielle Rice
Mr. Edward Redfield Richardson
Ms. Emily Richardson
Ms. Linda Rimmer
Nina Rivera and Peter Hardy
Mr. and Mrs. William H. Rivers Jr.
Mr. Shepherd K. Roberts
Mr. and Mrs. F.R. Robertson
Dr. and Mrs. Harold J. Robinson
Ms. Kaitlin Roche
Travis D. Rodgers and Sam Simkins
Dr. Paul M. Roediger
Ms. Annabella Roig
Mr. and Mrs. Charles Roller
Mr. and Mrs. Ralph Rosen
Dr. Martin Rosenberg and Dr. Ellen Fennick
Sondra Rosenberg and Carl Bradley
Dr. and Mrs. Joel Rosenbloom
Mr. and Ms. Christopher Ross
Milton Rossman and Yvonne Paterson
Mr. and Ms. Frederick T. Rosso
Dr. and Mrs. Bernard N. Rothman
Ms. Ellen G. Rothman
Mr. and Mrs. Jack A. Rounick
Mr. and Mrs. Kevin Rowe
Dr. and Mrs. Herman D. Rudnick
Mr. Peter Rudolph
Mr. and Mrs. James Ruff
Mr. and Mrs. Mark Ruppel
Mr. Thomas R. Ryan
Ms. Virginia Sacha
Ms. Phyllis L. Sacks
Mr. Greg Salisbury
Ms. Susan C. Saltzman
Mr. and Mrs. Anthony Salvo
Mrs. Penelope Sarkioglu
Mrs. Jacqueline Sarlo-Weiss
Janet and Frank Satterthwaite
Mr. and Mrs. Ralph Saul
Dr. Eric Sbar and Ms. Laura Cola
Mr. and Mrs. Nicholas Scharff
Mr. Lenny Schiavo
Mrs. Deborah Schmidt
Mr. and Mrs. Carl Schneider
Ms. Deborah Schur
Mr. and Mrs. Harold Schwartz

Ms. Sheila V. Jameson-Schwartz and Mr. Stuart Schwartz
Mr. and Mrs. Andrew Scott
Ms. Evelyn L. Scott and Ms. Nikki Scott Jordan
Mr. Michael E. Scullin and Ms. Patricia Scullin-Schindler
Nadine and Val Secarea
Robert and Ruth Seeley
Nina Segre and Frank Furstenberg
Mr. and Mrs. Sol Shapiro
Mr. and Mrs. Jeffrey Shaver
Mr. and Mrs. Edwin S. Sheffield
Mr. and Mrs. Philip Sherman
Mrs. Marciarose Shestack
Ms. Helen Holmstine Short
Mr. and Mrs. M. Melvin Shralow
Ms. Elle Shushan
Dr. and Mrs. Brian Simon
Mr. and Mrs. Marc Simon
Mr. and Mrs. Richard Simon
Ms. Christine M. Sincavage
Owen B. Sindler
Jane and Allan Slater
Ms. Tammy Slusser
Mr. and Mrs. Donald Smith
Ms. Janice A. Smith
Ms. Sabra Smith
Mr. and Mrs. Samuel C. Smith
Mr. and Mrs. Herbert Smith
Ms. Mina Smith-Segal
Mr. and Mrs. Ralph Taylor
James Smyth, Jr. and James Rodgers
Dr. and Mrs. Howard Snyder
Mr. and Mrs. Richard Snyderman
Ms. Deborah E. Solo and Mr. Angel L. Franqui
Ms. Jin Song and Mr. Gideon Umile
Mr. and Mrs. Karl H. Spaeth
Mr. and Mrs. Arthur Spector
Dr. and Mrs. Gus Spector
Ms. Anne F. Spencer
Jack and Jill Stein
Mr. Jonathan Steinberg and Dr. Marion Kant
Mrs. Pearl Zeid Steinberg
Dr. and Mrs. Stanford Steinberg
Ms. Connie Stelzenmuller
Mr. Gary Sternick and Ms. Suzanne Griffith
Mr. and Mrs. Joseph Stevenson
Ms. Celeste Stewart
Mr. and Mrs. George Scott Stewart
Mr. and Mrs. Edward Stinson
Mr. and Mrs. Jason Strahm
Mr. Bertram Strieb
Mr. Robert A. Stutman
Ms. Erin Suhy
Mr. Robert Sulentic and Ms. Mary Nooney
Dr. Neil Sussman

Mr. and Mrs. Cy L. Swartz
Ms. Jane W. Swartz and Ms. Talmage Brennan
Mr. and Mrs. Kenneth Sweatt
Mr. and Mrs. Lee E. Tabas
Mr. and Mrs. Vincent J. Tague Jr.
Ms. Deborah Talbot
Mr. Lee A. Tamaccio
Mr. James Taylor and Ms. Beverly S. Hayden
Jerome and Susan Taylor
Mr. and Mrs. William J. Taylor
Ms. Alester Teagle
Dr. and Mrs. Joel R. Temple
Mr. and Mrs. Bruce L. Thall
Mr. and Mrs. Edwin Easton
Mr. and Mrs. Fairman R. Thompson
Mr. and Mrs. Radclyffe F. F. Thompson
Ms. Trish Thompson and Mr. Joel Katz
Mr. and Mrs. Simon Tickell
Mr. and Mrs. Brian P. Tierney
Dr. and Mrs. J. Peter Tilley
Ms. Elizabeth Tinker
Dr. and Mrs. Stephen Tint
Mr. David Titus
Mr. and Mrs. Anthony Tognini
Ms. Marjorie Toll
Ms. Denise Tomayko
Mr. and Mrs. Jerry A. Toomer
Mr. and Mrs. Paul Toy
Ms. Thu Tran
Ms. Margaret Trebing
Mr. and Mrs. Robert P. Treftz
Mr. and Mrs. William Trevathan
Rev. Scott Trull
Ms. Marisa Tsikitas
Mr. Jerzy Tufman and Ms. Deborah D. Wheeler
Dr. John J. Tumola
Mr. and Mrs. Michael E. Tyler
Ms. Cathleen C. Judge and Mr. David Unkovic
Ms. Janine Utell and Mr. John Paul Spiro
Mr. Eric Vacca and Ms. Laurie Levin
Mr. and Ms. Jean-Pierre Valin
Mr. and Mrs. John Van Horne
Mr. Ronald Vanlangeveld
Ms. Teresa Fink and Mr. Stephen Varenhorst
Ms. Celeste Vaughan-Briggs
Mrs. Virginia M. Verges
Mr. William M. Wade and Ms. Jeanne M. Patrick
Dr. and Mrs. Joel Wagman
Ms. Saral Waldorf
Mr. Robert Waller and Ms. Anne Brennan
Mr. and Mrs. Mark Wallison
Anne Walsh and Don Daddario
Lauren and Andrew Walter
Mr. Thomas Wamser and Ms. Julie Donahue
Mr. Clyde Waters
Mr. Robert Curley

Mr. Colin Weaver
Jeannine and David Webber
Dr. Ross Webber
Mr. Wesley Wei and Ms. Rachael Hoffman
George and Carol Weinbaum
Oscar and Joan M. Weiner
Ms. Millicent Weinstein
Mr. Larry Weitzner
Ms. Julie Welker
Dr. and Mrs. David A. Wenger
Ms. Jean Wetta
Ms. Alina R. Wheeler
Caroline Whitbeck
Mr. David J. Wierz
Dr. Charles K. Williams, II
Mr. Wilson and Ms. Mcaffrey Wilson
Mr. and Mrs. Paul Wilson
Mr. and Mrs. Daniel Wingert
Rachel Winslow and Peter Ogle
Martha and Claude Wintner
Mr. Richard G. Wolf
Lorle and Bertram Wolfson
Mr. and Mrs. George Woodward
Ms. Anna Wullick
Ms. Dixie Young
Ms. Sherley Young
Mr. and Mrs. Joseph Zabra
Dr. Jennifer S. Zarro and Mr. Jerme Frank
Karene and Mark Zimmerman
Mr. Michael Zuckerman and Mr. Shaw Zuckerman
Mr. Michael Zuckerman and Ms. Jan Levine
Cathleen and James Zurbach

INDIVIDUAL MEMBERS

Anonymous
Ms. Constance Louise Abend
Ms. Barbara Acton
Mrs. Evelyn Adler and Ms. Vanessa Weiman
Mr. George J. Ahern
Ms. Joanne Aitken
Mr. George C. Alburger
Ms. Nan Alderson
Ms. Eleanor A. Allen
Ms. Jane Al-Mashat
The Rev. Albert E. Alspach
Ms. Marlene Ances
Ms. Beverley Anderson
Ms. Nathalie F. Anderson
Ms. Susan Anolik
Ms. Irene Anthony
Ms. Brittany Anuskiewicz
Ms. Yvonne Appeltans
Mr. Bernard Applebaum
A. Joseph and Ann H. Armstrong
Miss Clarissa Arocena
Mrs. Judith Auten

Mrs. Jacqueline M. Axilbund
Mrs. Barbara C. Bachman
Ms. Ellen Baer
Mr. Mahari Bailey
Ms. Carleen Baily
Ms. Cheryl Baker
Dr. Regina M. Bannan
Dr. Aaron Bannett
Ms. Elaine Bass
Mr. Peter Bay
Ms. Victoria Bayle
Dr. Frances R.B. Baylson
Jane N. Beatty
Mr. Alberto Becerra
The Honorable Phyllis Beck
Mr. Ryan Beck
Mrs. Stephanie W. Beilman
Ms. Phyllis Belk
Mrs. Marie R. Bender-Muir
Ms. Sara Benowitz
Mr. Perry Benson
Ms. Dorothy Berlin
Mr. Frank Bernard
Mrs. Dene K. Bernstein
Ms. Harriet K. Bernstein
Ms. Susan S. Berrigan
Ms. Jane Berryman
Dr. Linda H. Bertland
Ms. Virginia L. Bestwick
Ms. Helen Bevivino
Ms. Kerry Bickford
Ms. Pamela Bierce
Ms. Diana H. Bittel
Mr. Vojtech Blecha
Ms. Carmen Blum
Ms. Jean L. Blumberg
Ms. June Blumberg
Mr. David A. Blumenthal
Ms. Ellin Blumenthal
Ms. Susan Bonila
Ms. Marian Bonner
Ms. Nothando Daisy Bopela
Ms. Joanne Bosack
Hon. George Bowen
Ms. Jacqueline Boyd
Mr. Frank Boyer
Mr. Stephen Boyle
Ms. Terry McNamara Boyle
Ms. Alvia Branch
Ms. Denise Branco
Mr. Robert W. Brano
Ms. Joan Bransky
Mrs. Joyce Breeding
Mrs. Philip A. Bregy
Ms. Edwina Brennan
Ms. Bessie Ruth Bridges

Sandra Broadnax
Ms. Maxine Brodo
Mr. John Brogan
Ms. Lydia Hamilton Brown
Mr. Craig Bruns
Ms. Judy M. Caldwell
Mrs. Nancy K. Callan
Howard and Angelika Callaway
Ms. Sheila Callinan
Mr. Wayne Cambern
Ms. Catherine Caparella
Mr. Ralph D. Caparulo
Mr. Peter Carides
Ms. Margaret Carlin
Ms. Donna Carney
Ms. Cynthia Carniecki
Mr. Gary G. Carpenter
Ms. Elizabeth Carr
Ms. Marie Carroll
Ms. Patricia Carson
Mr. William D. Carver
Mr. Corliss F. Cavalieri
Arlene B. Cessna
Mr. Alan Charkey
Mr. Stephen T. Chase
Ms. Alyssa Chatten
Ms. Martha Chatten
Ms. Martha Chavis
Ms. Rose Cheney
Mr. Harry S. Cherken, Jr.
Mr. Larry D. Chestnut
Ms. Marie Chevrier
Mrs. Louise G. Christopher
Ms. Alice K. Chung
Mr. Michael V. Ciliberti
Mr. Tom W. Clapham
Ms. Elizabeth M. Clattenburg
Ms. Sadie Clifford
Ms. Brona Cohen
Ms. Frances L. Cohen
Ms. Marsha Cohen
Ms. Susan E. Cohen
Mr. Kevin Colgan
Ms. Helen M. Comolli
Ms. Jane Conboy
Ms. Patricia Conn
Mr. Nicholas V. Coppa
Ms. Mary Corbett
Mrs. Marcia Cornish
Ms. Nancy A. Cridland Baum
Ms. Janet A. Cuff
Ms. Anne M. Curran
Mrs. Julie Curson
Ms. Delphine Dahan
Mr. John Dale
Ms. Ellen G. Davenport

Mr. Allen F. Davis
Ms. Patricia Davis
Dr. Thadious Davis
Miss Maude de Schauensee
Mr. Anthony E. DeCarlo
Ms. Julie Deery
Ms. Mary Delwitt
Ms. Mary DeNadai
Ms. Cecelia W. Denegre
Ms. Elizabeth C. Denton
Ms. Betty P. DePew
Ms. Ruth Ann Derr
Madame Justine P. DeVan
Mr. John Diamond
Ms. Roberta Diamond
Ms. Jenni Dickens
Ms. Charlotte Dobrasin
Ms. Alice M. Domineske
Ms. Deborah C. Domino
Charles and Ellie Domskey
Ms. Deborah Dooling
Ms. Joanne M. Dougherty
Ms. Maureen T. Drdak
Ms. Janet H. Dreher
Mr. Neil R. Dreibelbis
Mrs. Phoebe A. Driscoll
Ms. Sharon Dula-Henik
Ms. Dona Duncan
Mark Eckhoff
Ms. Uzo Ehi
Mrs. Reta Eisenberg
Ms. Mariann Elias
Ms. Annie Ellerman
Dr. Richard Ellis
Ms. Kathleen Emerson
Dr. Wilfred Ethier
Mrs. Joan F. Evans
Mrs. Elizabeth Evert Orr
Ms. Anne R. Fabbri
Mr. Jeffrey D. Faigle
Prof. Theopolis Fair
Mary Baker Farrow
Mr. Douglas Faulkner
Ms. Fradele Feld
Mr. Mike Felker
Ms. Annette E. Field
Mrs. Janet C. Fink
Dr. Judith Finkel
Ms. Carol Finkle
Mrs. William E. Fischelis
Ms. Jeanne B. Fisher
Ms. Diane Fitzgerald
Ms. Suzanne Fitzpatrick
Ms. Eleanor P. Flom
Mr. Robert T. Foley
Dr. Raymond Ford

Ms. Joan L. Forman
Dr. Margaret Foti
Ms. Susan A. Fox
Ms. Naomi Frangos
Mr. Harry Frank
Ms. Maureen Fratantoni
Ms. Sally Frazza
Ms. Kay O. Freeman
Ms. Sheryl C. Friedman
Ms. Julie Gable
Ms. Judi Garst
Mr. Benjamin Garvey
Ms. Vivian A. Gast
Ms. Marie Gaultiene
Mr. Richard T. Geist
Ms. Karen Gelfand
Mr. John Geronimo
Ms. Anna Gerrity
Miss Gina Giampetro
Ms. Anne E. Gill
Dr. Frances M. Gill
Ms. Susan M. Gill and Ms. Charlotte Martish
Ms. Anna M. Giordano and Mr. William Glaser
Deborah E. Glass
Ms. Peggy D. Glover
Ms. Marjorie Goldman
Ms. Harriet Beloff Goodwin
Ms. Luana G. Goodwin
Ms. Laurel Grady
Ms. Mary Ellen Graham
Mr. Ralph Kenneth Grant
Ms. Heather Gray
Mr. Robert L. Gray, III
Mr. Mark Green
Ms. Renee Green
Ms. Shirley L. Green
Mr. and Mrs. Bertram Greenspun
Mr. Henry Gretzkowski
Ms. Norma Griffith
Dr. Miriam Grossman
Mr. John Grothusen
Mr. Craig Guthrie
Hon. Ted Gutswa
Ms. Deborah Haas
Ms. Rose Hagan
Mr. Bruce Haines
Ms. Gretchen R. Hall
Mrs. Ona Hamilton
Mr. John H. Hanovsky
Ms. Barbara Harberger
Mr. Stephen J. Harlen
Ms. Elizabeth Harper
Mr. Peter E. Harper
Ms. Carol Ann Harris
Mrs. Peter Harrison
Mr. Mike Hartmann

Ms. Francine Haselkorn
Ms. Gail Hauptfuhrer
Ms. Arlene Hausmann
Mr. Stan Hawrylo
Prof. Mary E. Hazard
Mr. Wesley M. Heilman III
Ms. Kirsten Helin
Ms. Nancy Heller
Mr. Andrew Hemme
Ms. Barbara Henig
Ms. Ruth Herd
Mr. Frank Herron
Sharon Hessney
Mr. Philip S. Hill
Mrs. Eileen H. Hinkson
Ms. Maiza Hixson
Ms. Vivienne Ho
Mrs. Ursula Hobson
Ms. Kathryn Hodgkiss
Ms. Joanne Hoffman
Ms. Marianne Hogue
Ms. Carolyn Calkins Holland
Mr. and Mrs. Lon W. Homeier
Mr. William Hooper
Mrs. Mary Hopkins
Mr. Robert J. Hotes
Mr. William Howard
Dr. Anna C. Huber
Mr. George K. Huber
Mr. David J. Huisken
Ms. Elizabeth Humes
Mary Anne Hunter
Mr. Wain H. Hunter
Mr. David Hursh
Mr. David Eric Iacone
Miss Anja Ilieva
Mrs. Mary L. Inman
Ms. Kelly Irwin
Ms. Judith Jacobson
Ms. JoAnne Jacqueline
Mrs. Elaine M. Jaffe
Mr. Philip Jamison
Mr. and Mrs. James W. Jennings
Ms. Barbro M. Jernberg
Ms. Carol Jessup
Ms. Joan Johnson
Ms. Martina Johnson-Allen
Miss Helen E. Jones
Ms. Judi Jones
Mrs. Mary Jones
Ms. Melody Jones
Mr. Michael Jones
Ms. Sondra Jones
Ms. Monika Jost
Mr. Neil Kallmyer
Mr. and Ms. Sea Kaplan

Ms. Mouina Karam
Ms. Elaine Katz
Ms. Linda Katz
Ms. Ellen Kaye
Ms. Megan Kennedy
Mr. Leonard Kestenbaum
Ms. Sallie Ketcham
Ms. Deborah Khan
Mr. Kerwin King
Ms. Patricia King
Mrs. Marjorie P. Kinkead
Professor Victoria Kirkham
Dr. Amelia Rocco Klein
Mrs. Lorraine M. Kligman
Mr. Daniel H. Kline
Ms. Rita Klinger
Ms. Nina S. Klymowska
Miss Patricia C. Knott
Ms. Linda S. Koenigsberg and Mr. Nathanel Axel
Mrs. Carol Koerbel
Mr. Fred Kogan
Mr. Russell Kolins
Mr. Michael G. Kopcho
Gene Kosich
Mrs. Christa Kramer
Ms. Deborah Larkin
Pearl Kramer
Dr. Evelyn S. Kritchevsky
Ms. Jane Krumrine
Ms. Sally Kuder
Ms. Muriel Kudera
Ms. Paula Jane Kurasch
Ms. Molly Lail
Ms. Tessa Lamont-Siegel
Dr. Bette Landman
Jean D. Lang
Mr. Jeffrey R. Larsen
Ms. Lynn Larson
Ms. Lora H. Lavin
Ms. Joanne M. Layton
Ms. Theresa Tai Lee
Mr. William Lee
Ms. Frieda Lefeber
Ms. Mary LeFever
Mrs. Nelson J. Leidner
Ms. Ruth Leidy
Ms. Veronica M. Lentz
Mr. and Mrs. Michael A. Levin
Ms. Myrna Levin
Mr. Steven D. Levin
Ms. Helene J. Levine
Mr. Gary Levinson
Ms. Elaine Levitt
Ms. Marjory Levitt
Ms. Julia T. Lewandowski
Dr. Beth Lewis

Ms. Patricia Lieb Nardi
Ms. Janine Lieberman and Mr. Joseph Price
Dr. Paul Liebman
Ms. Katy Chengmei Lin
Ms. Julie Linowes
Ms. Karen Lisker
Mrs. Audrey Litto
Ms. Anne M. Livingston
Ms. Deenah Loeb
Ms. Carla Lombardi
Ms. Gordana Loncar
Ms. Fredda London
Mr. Benjamin Long
Mr. David Lowe
Ms. Rachel Lowery
Ms. Charlotte Lowrey
Dr. William D. Lutz
Dr. Colin F. MacKay
Ms. Shirlee M. Maglietta
Mr. Paul Malfara
Alice Mandel
Ms. Celeste Mann
Mrs. Aisha Mansouri
Mr. Benjamin F. Marcune
Lawrence N. Margel
Ms. Theresa Maricondo
Ms. Rose Marinaro
Ms. Barbara E. Marks
Ms. Eileen D. Marolla and Mr. Charles Sterne, III
Ms. Esther W. Marshall
Ms. Sarah Maxwell
Mr. Philip Maynard
Mrs. Louis E. McAllister, Jr.
Ms. Pamela McCabe
Ms. Eileen M. McCarron
Ms. Kellianne Mccarthy
Ms. Francesca McClay
Mr. and Mrs. Michael McClure
Ms. Patricia T. McCurdy
M. McDonald
Ms. Mary McGinn
Ms. Pat McInerney
Ms. Christine Mckay
Mr. Peter McKenna
Ms. Rania McKinley
Mr. AJay McLaughlin
Ms. Mary McManus
Mr. Bernard McNamee
Ms. Maureen McNulty
Ms. Christa McQuillen
Mr. Frankie McSwiggan
Ms. Linnea Melvin
Ms. Rochelle D. Merhige
Mr. Mark Merlis
Mr. Albert Meyer
Jean Meyers

Mrs. Margy Ellin Meyerson
Mr. Joe Mikuliak
Mrs. Gainor I. Miller
Ms. Jean Miller
Dr. Jerome C. Miller
Mr. Joseph M. Miller
Ms. Lane Miller
Ms. Lucy Miller and Mr. Russell Baldwin
Ms. Naomi Miller
Dr. Randall Miller
Ms. Elizabeth Mills
Ms. Nancy Mills
Ms. Anne Milner
Mr. Robert A. Minnick
Ms. Carol Mohr
Mrs. Natalie Molitor
Mrs. Constance Cook Moore
Ms. Martha Moore
Ms. Marybelle Moore
Ms. Patricia Moore-Martimer
Ms. Page S. Morahan
Ms. Janet Morris
Mr. Paul Mosher
Ms. Marsha Moss
Ms. Amanda Mott
Ms. Deirdre Mullen
Mrs. Jane H. Mullins
Mr. Daniel I. Murphy
Mr. Raymond Murphy
Mr. William Murray
Ms. Marilyn Myers
Ms. Judith A. Nagle
Mrs. Carolyn B. Nagy
Ms. Barbara A. Neswald
Ms. Janet Neufeld
Ms. Diane Newbury and Mr. Steven Berman
Mr. John Newhall
Ms. Iris Newman
Ms. Maria Newman
Walter Andrews Newman III
Mr. Alasdair Nichol
Ms. Virginia R. Nicholson
Ms. Debbie Mae Noble
Mr. John Nolan
Ms. Charlene A. Nolten
Ms. Josephine V. Norden
Ms. Elizabeth Nork
Mrs. Charles M. Norris
Mr. Richard V. Nowakowski
Mr. James E. Oakes
Mr. Thomas K. O'Brien
Dr. and Mrs. James R. O'Connell
Hon. John J. O'Grady, Jr.
Ms. Faye S. Olivieri
Ms. Rosalyn Ominsky
Ms. Ilona Ontscherenki

Mrs. Lynda Orfanelli
Ms. Mary C. Osterneck
Ms. Andrea C. Packard
Mr. Matthew Paley
Mr. Edward Panek
Ms. Paula Paradise
Ms. Soyun Park
Ms. Belle B. Parmet
Ms. Laura Pattillo
Ms. Marilyn H. Paul
Dr. Steven J. Peitzman
Ms. Carmen N. Pelaez
Mrs. Jane G. Pepper
Ms. Janet B. Perper
Miss Christine Persad
Mrs. Eleanor R. Peterson
Ms. Johanna M. Petropoulos
Dr. Charlotte De Monte Phelps
Ms. Eleanor Pierson
Ms. Lynda Pilkington
Mr. Ronald Polka
Ms. Mary F. Pollitt
Ms. Sally Poulshock
Mr. Benjamin W. Powley
Mrs. Robert W. Preucel
Ms. Alice M. Price
Ms. Phyllis A. Priester
Mr. and Mrs. Wendell Pritchett
Mr. Pete Prown
Ms. Mary Purcell
Mr. Tom Purdom
Ms. Joan L. Quann
Ms. Ceane Rabada
Jeanette Ragucci
Mrs. Stefany J. Raich
Ms. Kathy Ranieri
Deborah L. Rapp
Mrs. David W. Rawson
Dr. Ernestine T. Redman
Mrs. Ann L. Reed
Ms. Deborah Reeder
Ms. Louise Rees
Ms. Joan Curtis Reese
Mr. William Reinus
Ms. Kathryn Rhodes
Ms. Marguerite H. Rice
Mrs. Linda J. Rich
Ms. Susan Richards
Ms. Jen Rickert
Ms. Patricia L. Riley
Ms. Stacey Rivkin
Ms. Harriet P. Robbins
Ms. Michele Roberts
Dr. Keith M. Robinson
Ms. Mary Robinson
Ms. Jennifer B. Robkin and Mr. David J. Robkin

Ms. Beth L. Rogers
Ms. Stephanie Rogers
Ms. Jeannie Day Roggio
Ms. Gloria D. Rohlfis
Ms. Susan Rosenthal
Mr. Donald Ross
Mr. Stephen W. Ross
Ms. Juliet Rossi
Ms. Roslyn Rothenberg
Ms. Christine Y. Rother
Ms. Ruth B. Rothman
Mr. Kenneth Rothweiler
Mrs. Estelle Rubens
Ms. Carole J. Rubins
Ms. Sheila Ruen
Ms. Harriet Ruffin
Ms. Sallee Rush
Mr. Robertson Rushton
Mr. Colin Russell
Marjorie Russell
Dr. Jose Russo
Ms. Barbara Ruth
Ms. Ellen P. Ryan
Ms. Ann H. Salmon
Ms. Mary Salvante
Ms. Donna Marie Salvo
Ms. Carla Sarett
Mr. Morton Saunders
Mrs. Barbara Savadove
Ms. Elizabeth Savage
Guy D. Sbar, M.D.
Dr. and Mrs. Philip Schein
Ms. Cathleen Schiman
Ms. Eleanor Schimmel
Ms. Lois Schlachter
Dr. Margo Schleman
Ms. Helen Schneeberg
Mr. Peter Schneider
Mr. Jason Schoen
Mr. Robert Schoenberg
Mr. Andy Schön
Mr. Donald Schreiber
Kate Royer Schubert
Mrs. Maxine Schwartz
Mr. Robert G. Schwartz
Joseph P. Senft, Ph.D.
Ms. Ruth Septee
Mr. John Serber
Ms. Nancy J. Sewell
Mr. and Mrs. Neil Shah
Ms. Margaret Shannon and Ms. Joan Breidling
Mr. H. Geoffrey Sheffer
Ms. Lois Shestack
Ms. Carroll M. Shields
Mr. Michael Shields
Mrs. Phebe Shinn

Ms. Adina Shmidman
Mr. Howard Silverman
Mr. Jean Simard
Ms. Anne W. Sims
Ms. Cynthia K. Sinclair
Ms. Stephanie Singer
Mr. Matthew Skahill
Dr. Jerome H. Sklaroff
Mr. PJ Smalley
Dorothy H. Smith
Ms. Janet W. Smith
Ms. Karen A. Smith
Dr. Kristin Smith
Dr. Maria B. Smith
Ms. Mary Sewell Smith
Meredith S.S. Smith
Ms. Patricia D. Smith
Ms. Rheta Smith
Ms. Sarah L. Smith
Mr. Rick Snyder
Ms. Ellen B. Solms
Mr. Robert Sondey
Barbara Sosson
Dr. George L. Spaeth
Mrs. Patricia Q. Spampinato
Mr. Tully Speaker
Mr. Joe L. Speight
Ms. Helen M. Stailey
Mrs. Blair D. Stambaugh
Ms. Ann Stanczyk
Ms. Jeanne Stanek
Ms. Marilyn J. Steeg
Mr. Carl Steele
Ms. Belynda P. Stewart
Ms. Patricia T. Stewart
Mr. Sam Streit
Mr. Lewis Strong
Mrs. Anne Stroud
Ms. Clare Stuepfig
Mr. John Suplee
Mrs. Patricia Suplee
Mr. Ralph E. Swan
Ms. Sara Fischer Swanson
Mr. Robert E. Tagliatalata Jr.
Ms. Nancy H. Taplin
Ms. Georgene Taylor
Mr. Marion J. Taylor
Mrs. Pamela Thomas
Ms. Bonnie Thompson
Mr. Levin H. Tilghman
Ms. Susan Toland
Mrs. Marie S. Tomasso
Ms. Rochelle Toner
Ms. Anna Coxé Toogood
Miss Victoria Trama
Ms. Mary Trometer

Mr. Craig L. Tucker
Ms. Louise Tucker
Mr. Donald Tumini
Mr. John R. Urofsky
Valetta
Mr. and Mrs. Duncan W. Van Dusen
Renee Veloric
Edward and Judith Viner
Mrs. Magda Vitale
Ms. Nancy A. Vonada
Mr. Daniel M. Wagman
Mr. Richard Waitzer
Mr. Larry Waldroup
Mr. Andrew Wallace
Ms. Linda S. Wallace
Ms. Carol Walz
Mr. Thomas Warner
Mrs. Clark Warren
Mr. Thomas Watkins
Mr. Richard M. Watson
Mr. Bruce J. Weaver
Mr. Alan Wechsler
Ms. Helma N. Weeks
Mrs. Warren H. Weiner
Ms. Harriet Weiss
Mrs. Mili Dunn Weiss
Mr. Larry T. White
Ms. Judith Widman
Ms. Diane Wiener
Ms. Laura Wildman
Ms. Cora Williams
Ms. Mary J. Williams
Ms. Ruby Williams
Ms. and Mr. Linda Wilt
Mr. David S. Winner
Mr. and Mrs. Barton J. Winokur
Ms. Linda Winsett
Ms. Harriet Wiseman
Dr. Alberta Wister
Mr. Scot Wittman
Ms. Carol J. Wolfenbarger
Ms. Patricia O. D. Wood
Ms. Barbara Wright
Ms. Kathryn Wright
Ms. Jeanne P. Wroblecki
Ms. Anna Yates Krain
Mr. Nelson Yeadley III
Ms. Deanna M. Yerka
Mr. Joseph Yohlin
Ms. Angela Zager
Ms. Christine Zelinsky
Miss Jing Zhang
Ms. Sarah L. Zimmermann
Ms. Maria Zmurkewycz

NATIONAL MEMBERS

Mr. Eric Allgaier
Mr. and Mrs. Stephen R. Bachman, Jr.
Mr. Jeffrey Baldwin
Mr. and Mrs. Charles Blake
Mr. and Mrs. Chat Blakeman
Mr. Victor Bokas
Dr. Stephen M. Bowes and Dr. Arlene Bowes
Mr. Paul Boyd
Mr. Richard Brenner
Mr. and Mrs. Marvin Cohen
Ed and Caroline Cope
Sarah Cowan
Mr. David G. Dick and Ms. Erin Leusen
Ms. Karyn S. Dingleline
Ms. Donna R. Ecton
Ms. Mary Alice Frederick
Mr. and Mrs. Mervin Fry
Ms. Charlotte Germane
Ms. Maria Gorbaty and Mr. Henry Phillips
Mr. Leonard Greco
Mr. Roderic B. Griffin, Jr.
Ms. Dana R. Irwin and Mr. Michael Freeman
Mr. Lowell Joerg
Mr. and Mrs. Edward Kagen
Ms. and Mr. Lisa Kajani
Mr. Kalis and Ms. Avni
Ms. Ann J. Kirschner
Ms. Courtney Klossner
Mr. David R. Lampe
Gerald and Marian Lazar
Ms. Virginia Maitland
Mr. Richard S. Mason
Mr. Michael Mastroianni and Mr. Jamie Murphey
Mr. and Mrs. Allen C. Miller Jr.
Heidi and Hunter T.W. Nelson
Jay van Wagenen and John C. O'Connor
Ms. Pia Payne
Mr. Alan Peters
Mr. Thomas Pilla
Ms. and Ms. Hannah Reimann
Steven Riskin and Julie Lipsius
Mr. Greg Roberts
Ms. Judy Rowley
Lee Rumsey
Dr. Faith Sandstrom
Mr. John A. Saum
Ms. Sara Schubert
Ms. Karen Selinger
Mr. and Mrs. Zeb Stearns
Mr. Thomas Weaver
Mr. Richard Weitzner and Ms. Vicki Gaul
Ms. Lili White

STUDENT MEMBERS

Ms. Margaret Donoghue
Mr. Marcus Ferreira
Miss Linda Freedman
Ting Gong
Mr. Kevin Hamp
Mr. John R. Heard
Patricia Hyman
Ms. Kate Lennon
Jan Lindemans
Mr. Maharshi Patel
Mr. Alexander Winder

ANNUAL FUND SUPPORTERS

\$1,000 - \$4,999

Anonymous (2)
Mr. and Mrs. Thomas M. Arrasmith III
Mr. Eric Brecher
Dr. Peter Bullough
Mr. Richard Carlstrom and Mr. Joel Samuels
Mr. William E. Chapman
Mr. and Mrs. Charles E. Chase
Mr. Richard T. Crawford
Ms. Linda Dessner
Mr. and Mrs. Samuel M. Earle
William and Joan Goldstein
Ms. Joanne T. Greenspun
Ms. Christina Lewis Halpern and Mr. Daniel Halpern
Ms. Susan M. Hendrickson
Mr. and Mrs. Kenneth F. Herlihy
Mr. and Mrs. Robert E. Keith
Mr. and Mrs. Gilbert Kerlin
Mr. and Mrs. James L. Kermes
Ms. Jannie K. Lau and Mr. Todd C. Longsworth
Ms. Gabriele W. Lee
Mrs. Edward R. Leisenring
Mr. and Mrs. Charles E. Mather III
Mr. and Mrs. John B. McGowan
Mr. and Mrs. Washburn S. Oberwager
Mr. James E. O'Neill and Mr. David A. Rubin
Mr. Donald S. Owings
Pennsylvania Academy of the Fine Arts
Mr. and Mrs. Samuel R. Peterson
Ms. Beatrice S. Pitcairn
Mr. and Mrs. Sashi Reddi
Ms. Sally S. Richards
Mr. and Mrs. J. Barton Riley
Mr. and Mrs. Jonathan Rorer
Mr. and Mrs. Howard J. Sacks
Mr. Timothy Patric Speiss
Mrs. Christina M. Thistle
Mr. and Mrs. Charles T. Wilmerding

\$500 - \$999

Ms. Wanda Blanchard
Nancy and David Colman
Diner en Blanc Philadelphia
Mr. and Mrs. Alex Gibbons
Mr. Eduardo Glandt and Mr. George Ritchie
Mr. and Mrs. William R. Gustafson
Mr. and Mrs. Richard J. Halloran
Mr. and Mrs. N. Peter Hamilton
Mrs. J. Welles Henderson
Mr. and Mrs. Robert C. Lockyer
Dr. and Mrs. Leigh Marsh
Jane and Bernard Mason
Ms. Kathleen D.B. McCoy
Mr. and Mrs. William Mezzanotte
Dr. and Mrs. J. Brien Murphy
Ms. Adina M. Newman
Mr. Edward Redfield Richardson
Mr. and Mrs. Neil Shah
Dr. and Mrs. Howard Snyder

\$250 - \$499

Mr. and Mrs. John A. Affleck
Mr. and Mrs. Charles Barker
Mr. and Mrs. Eric J. Barkley
Dr. and Mrs. Jere R. Behrman
Mr. and Mrs. James Mahlon Buck III
Ms. Patricia Connelly
Mr. and Mrs. Jerome F. Dean
Mr. and Mrs. Vincent D. Firth
Ms. Audrey L. Flack and Mr. Robert Marcus
Geoffrey and Laura Gardiner
Ms. Katharine Gilbert
Mr. and Mrs. William Y. Giles
Mr. and Mrs. Matthew P. Goodman
Mrs. Samuel M.V. Hamilton
Mr. and Mrs. William Harrity, Jr.
Ms. Alice Mary R. Lawler
Mrs. Kathryn Fligg Lee
Dr. and Mrs. Roy T. Lefkoe
Miss Sydney Ann Lefkoe
Mr. Gerard Lewis and Ms. Robin Sheldon
Ms. Megan Maguire
Mr. Gregory W. Martino
Ms. Constance Ferris Meyer
Mr. and Mrs. Bruce F. Morgan
Mrs. Ora L. Myers
Mrs. Carolyn B. Nagy
Mrs. Harry R. Neilson, Jr.
Mr. and Mrs. William L. Noel
Miss Susan Odessey and Ms. Ariel Coff
Mr. and Mrs. Joseph D. Olivieri
Mr. Thomas Palmore
Philadelphia International Advisors
Ms. Jean S. Robertson
Mr. Ronald Rubin

Mr. Ron Rumford
Mr. Jesse Saunders and Mrs. Rikki Saunders
Mr. William Schmidt
Mr. and Mrs. William Lloyd Snyder, III
Ms. Karen Steen
Ms. Louise Tucker

Gifts up to \$250

Anonymous (4)
Ms. Bettina B. Aberant
Ms. Carolyn Adams
Ms. Amanda Agamy
Mr. Michael Ajero
Jeremy and Susan Mader Aldridge
Ms. Nancy Allen
Ms. Davita Allie
Ms. Linda Lee Alter
Mr. Harry Amana
Mrs. Susan Amar
American Capital Management, Inc.
Ms. Marlene Ances
Mr. William Angiolillo
Mr. Reginald Archambault
A. Joseph and Ann H. Armstrong
Ms. Jeannette Armstrong
Mr. Paul Arnold
Carol and Richard Baca
Ms. Ann Bacon
Mr. Les D. Bacsuylaky
Ms. Judith Balis
Dr. Regina M. Bannan
Dr. Aaron Bannett
Mr. Robert Barr
Martha and Alexis Barron
Nancy L. Bartley
Mr. and Mrs. George P. Bassett III
Mr. Larry Batchelor
Ms. Rachel Batsford
Mr. Alberto Becerra
Ms. Joan A. Becker
Mr. Richard L. Behr and Ms. Joan Behr
Mrs. Kathie Bell and Mr. Jeffrey Graham Bell
Ms. Jennifer Bendall
Mr. Nathaniel Bender
Mr. Perry Benson
Terry Berch McNally
Mr. Ted Berger
Mr. and Mrs. David J. Berkman
Mr. and Mrs. Ernest L. Biddle, Jr.
Ms. Diana H. Bittel
Hon. Brian Bixby
Mr. Kenneth Blackstone
Miss Stephanie Blakeman
Mrs. Lumaria Blakeney
Mrs. June Blank
Ms. Zoe Blatt

Ms. Kimberly Bleiler
Mrs. Leslie Blum
Mr. and Ms. Allen J. Bomentre Jr.
Ms. and Mr. Sharon Bonannie
Ms. Barbara Boroff
Ms. Joanne Bosack
Mr. Robert Botto
Hon. George Bowen
Ms. Heather Boyd
Mr. Frank Boyer
Mr. Stephen Boyle
Mr. and Mrs. William Branan
Ms. Jennifer Branscom
Ms. Barbara Braxton
Mr. Eric Bresler
Miss Stacey Bridgeman
Mr. J. Clayton Bright
Mr. Francesco Brizzi
Ms. Miriam Buchsbaum
Ms. Kristen Buck
Mr. and Mrs. John Bullock
Miss Amanda Burton
Mr. David Bushman
Ms. Nancy Fischer Byrne
Ms. Judy M. Caldwell
Mr. Brendan Callahan
Mr. Attilio Campolongo
Ms. Catherine Caparella
Mr. Ralph D. Caparulo
Mrs. Mary Cardona
Mr. Kyle Carraher
Mr. Michael Carter
Mr. and Mrs. Howard M. Casper
Ms. Heather Castro
Mr. Dante G. Celia
Ms. Allison Chang
Sandra Chase and Walter Max Hutchins
Ms. Ellen Chenoweth
Miss Patrizia Chiarenza
Ms. Yvonne Chism-Peace and Ms. Tamara Peace
Lesia Chittenden Lim and Victor Lim
Ms. Nancy Citrino
Ms. DeAnn P. Clancy
Ms. Gretjen Clausing
Ms. Nancy Clipper
Dr. and Mrs. Matthew J. Cohen
Ms. Brona Cohen
Ms. Nancy Cohen
Mrs. Perky Cohen
Ms. Susan E. Cohen
Dr. and Mrs. Elliott H. Coleman
Mr. and Mrs. Anton Collyer
Mr. Jim Conboy
Ms. Patricia Conn
Ms. Katherine Conroy
Miss Robyn Cooper

Ms. Mary Corbett
Mr. Carl Cordek
Mrs. Marcia Cornish
Cornwells Elementary
Mr. and Mrs. James M. Corry
Ms. Mari Corson
Mrs. Jacqueline S. Cotter
Dr. Susan Cottrell
Nic and Amelia Coviello
Mr. and Mrs. William Craven
Sheila Crawley and James Ellsworth
Ms. Michele Creamer
Dr. and Mrs. Donald H. Cresswell
Ms. Nancy A. Cridland Baum
Mr. Harrington E. Crissey
Mrs. Carol Crouthamel
Ms. Barbara Crowl
Mr. Gregg R. Crumley
Ms. and Mr. Laura Cruz
Ms. Anne M. Curran
Ms. Delphine Dahan
Mr. Christopher Dalbey
Ms. Dolly Das
Ms. Heather Defreytas
Mrs. David K. DeLong
Mr. and Mrs. Darrell L. DeMoss
Mr. and Mrs. Theo Dennis
Mr. and Mrs. Cortright Devereux
Ms. Laura Dale Dockery
Ms. Liz Donaghy
Mrs. J. David Donahower
Ms. Annmarie Donahue
Ms. Marian Donley
Ms. Joanne Donnelly
Jesse Dorris
Mr. and Mrs. William Doucas
Ms. Janet S. Dougherty
Dr. Andrew F. Drake
Dr. and Mrs. Thomas Drake
Mr. Shaka Draper
Mr. Robert J. Dromboski and Dr. Laura B. Frank
Ms. Kelsey Duinkerken
Mr. Michael Durkin
Mr. and Mrs. John W. Durso
Mr. James E. Dyer, Jr.
Mr. and Mrs. V. R. Eales
Mr. and Mrs. David Eater
Ms. Vivienne Ehret
Ms. Michelle Elliott
Mr. Donovan Entrekin
Mr. David Estey
Ms. Janet Evans
Mrs. Joan F. Evans
Mr. John Ford Evans
Ms. Betsy Edmonston Evans-Banks
Mr. and Mrs. Leonard Evelev

Mr. and Mrs. Jim Eversmann
Ms. Mary Anne Eves
ExxonMobil Foundation
Mr. Lee J. Faden
Mr. Marco V. Farnese and Ms. Doris Schmauk
Mrs. Donald L. Felley
Mr. Dean Felton
James Fennell and Henry Bernstein
Dr. Bradley Fenton and Dr. Marie Savard
Ms. Maureen Ferguson
Ms. Sarah Ferone
Fidelity Charitable Gift Fund
Mr. Andrew L. Fielding
Mr. Ronald D. Fillius
Mr. and Mrs. Paul Finley
Robert S. Fisher, M.D.
Mr. Jay Flaherty
Mrs. Laurie Fleming
Ms. Eleanore P. Flom
Ms. Susan Flynn
Dr. Raymond Ford
Ms. Alma Forman and Ms. Dianne Forman
Dr. Wendy Forman and Mr. Alan Forman
Mr. Leroy Forney
Dr. Kathleen A. Foster
Dr. Sadie Francis
Mr. Wayne Franks
Mr. William Frantz
Mr. and Mrs. Charles C. Freyer
John Frommeyer
Ms. Rachel Fuld
Mr. and Mrs. Roger Fuller
Ms. Nora Fussner
Mr. Philip J. Gallagher
Mr. David Garcia
Mr. Joe Garcia
Ms. Elizabeth Brown Garon
Ms. Judi Garst
Ms. Christiane Geisler
Mr. Richard T. Geist
Ms. Karen Gelfand
Lisa Genuardi Wilson
Miss Meilani Georgis
Mr. Tim Gerdes
Laura E. Giannini
Miss Anna Gibertini
Mr. and Mrs. Mark Gilbert
Ms. Heather Giordanella
Miss Kerrin Giovanelli
Ms. Donna Glickstein
Miss Georgia Goetz
Mr. and Mrs. Herb Gorenstein
Joan Gorrell
Randy Gottlieb
Ms. Helena Grady and Mr. Joel Maruchek
Mr. Ralph Kenneth Grant

Miss Jenna Grasley
Robert and Melinda Grass
Mr. John Paul Grauer
Ms. Ericka Gray
Mr. Kent Green
Ms. Shelley Green
Mr. Todd P. Gregoire
Ms. Leanne Grimes
Mr. Jeffery L. Grogan
Ms. Marcia Groverman
Ms. Andrea Guevara
Mrs. Margot M. Rowley and Mr. Chandrakant R. Gupta
Mrs. and Mr. Kelley A. Hagemes
Ms. Gretchen R. Hall
Mr. and Mrs. Eric Halpern
Mr. and Mrs. Harold Hambrose
Laura Rizio and James A. Hamilton III
Miss Paula Hammond
Mr. Mason Harding
Mr. Michael Harding
Ms. Elizabeth Harper
Mr. Ethan Harper
Ms. Martina Harris
Ms. Leila Hartman
Ms. Joyce Hayden
Miss Kia Hayes
Ms. Barbara Hebding
Mr. Wesley M. Heilman III
Mr. Andrew Hemme
Ms. Anne Henry
Mickey Herr
Mr. and Mrs. Fritz Hessemer
Ms. Carole Heys
Mr. Adam Hjorthen
Ms. Kimberly Hoffa
Mr. and Mrs. James Hole
Ms. Janet Holec
Ms. Laura Hollingshead
Mr. Erik Hommen
Mr. and Mrs. Paul Hondros
Esther and Bob Hornik
Helen and John F. Horstmann
Ms. Joanne M. Howell
Ms. Tara Howley
Dr. Anna C. Huber
Mary Anne Hunter
Mr. and Ms. L. S. Illoway
Ms. Patricia B. Ingersoll
Ms. Carol S. Jackson
Ms. Diane Jackson
Miss Marie Jacobs
Jeanne Jaffe
Ms. Aisha Jafri
Mr. Barry W. Jeffries
Mr. and Mrs. James W. Jennings
Ms. Melissa Jester

Jewish Federation of Greater Philadelphia
Ms. Devon Jih
Johnson & Johnson Family of Companies
Mrs. Cathy Johnson
Mr. Homer W. Johnson
Mr. Jean Johnson
Mr. Todd Johnson
Mr. martin jones
Ms. Sondra Jones
Ms. Susan Jones
Mr. William J.D. Jordan
Ms. Monika Jost
Mr. and Ms. Steve Joyce
Mr. and Mrs. Fred Kahn
Kaiser Permanente Community Giving Campaign
Mr. A. John Kammer
Mr. Brian Kane
Mrs. Kimberly Kane
Ms. Jamie Kaplan
Ms. Barbara H. Karapelou
Ms. Linda Katz
Ellen Baxter and Robert Kavash
Dr. Samantha Kavky
Mr. and Mrs. Jules Kay
Catharine Keim
Mr. and Mrs. Malcolm Keiter
Mr. and Mrs. Morris C. Kellett
Mrs. Candra Kennedy
Ms. Barbara Keough
Ms. Deborah Khan
Mr. Gary King and Ms. Eleanor Kazdan
Ms. julia king
Mr. and Mrs. Martin G. King
Ms. Rachel Kitzinger and Mr. Eamon Grennan
Ms. Barbara F. Klein
Mr. James Klein and Ms. Adeline Schultz
Ms. Nellie Kleinberg
Ms. Rita Klinger
Mr. and Mrs. John Klose
Ms. Nina S. Klymowska
M. Suzanne Knecht and Richard W. Knecht
Ms. Lisa McQueen Knight
Ms. Alexandra F. Knox
Dr. Seth Koch and Ms. Barbara Bellman
Ms. Clarissa Koppius
Ms. Amanda Koprowski
Ms. Sharon Kopyc
Ms. Agnes R. Kraus
Miss Emilie Krause
Dr. Evelyn S. Kritchevsky
Ms. Millicent Krouse
Mr. and Mrs. Ronald Kuchera
Ms. Linda La Rose
Ms. Janae Ladet
Elaine Landau
Mr. Alphonse M. Lane

Miss Janessa Lantz
Dr. and Mrs. Marc S. Lapayowker
Emilie and Peter Lapham
Ms. Mary Lattimore
Panagiotis Lazaropoulos
Mr. Anthony Lazorko, Jr.
Ms. Betty Jane Lee
Ms. Miyung Lee
Mr. William Lee
Ms. amanda leighton
Mr. Juan-Andres Leon
Ms. Sharon L. Levin and Mr. Robert Levin
Mr. Steven D. Levin
Dr. Beth Lewis
Liberty Business Strategies
Ms. Janine Lieberman and Mr. Joseph Price
Mrs. Pamela Lindberg
Ms. Julie Linowes
Dr. Nancy Lisagor and Mr. Frank Lipsius
Mr. and Mrs. Stephen Lishnoff
Ms. Cathey Lizzio
Ms. Elsie Trefz Loane
Mr. Michael Lombardi
Ms. Fredda London
Mr. and Mrs. Eugene M. Long
Ms. Ellen Lube
Mr. Alexander Ludwig
Ms. Judy Lupas
George T. Lynch
Ms. Nancy Lynn
Mr. and Mrs. R. Scott MacKay
Ms. Diana J. Mackie
Josephine Madej and Thomas D. Rees
Mrs. Janet E. Maher
Mr. Scott Maisey
Mr. and Mrs. John Maley
Ms. Jessica Manard
Mr. aaron mannino
Miss Julia Mansfield
MARC USA
Ms. Dianna Marder
Mr. and Mrs. Sheldon B. Margolis
Ms. Theresa Maricondo
Ms. Rose Marinaro
Ms. Esther W. Marshall
Ms. Lisa Martelli
Mr. Richard S. Mason
Mr. and Mrs. Charles E. Mather III
Ms. Sabina Mauro
Ms. Sarah Maxwell
Ms. Alexis Mayer
Mrs. Nancy Mayer
Ms. Jane Mays
Mrs. Louis E. McAllister, Jr.
Mrs. Sigrid McCall
Mr. Tim McCloskey

Mr. Robert McCollum
Mr. and Mrs. William L. McCullen
Mr. Jim McDonald
Ms. Paula McElhinney
Ms. Sarah A. McEneaney
Dr. and Mrs. William McGowan
Mr. Trey McIntyre
Mr. and Ms. Robert McKennett
Patricia McKinney
Mrs. Scarlett McLean and Mr. Jim McLean
Mr. James McNamara
Mr. and Mrs. Robert McQuiston
Mr. Travis Mease
David and Beth Medoway Kagan
Mr. Vince Melone
Ms. Kerry Mentzer
Dr. Randall Miller
Ms. Samantha Miller
Mr. Terence Milstead
Ms. Anne Minich
Mr. Robert A. Minnick
Mr. and Mrs. Eugene Judson Mitchell
Mr. John Moffa
Mr. and Mrs. Barry Mohr
Mr. Michael Monroe
Mrs. Jessica Moore
Ms. Martha Moore
Mr. and Mrs. Michael Moore
Mr. Robert Moore
Ms. Susan Morvin Dinkins
Mr. and Mrs. Samuel Mosca
Mrs. Leigh Moser
Ms. Amanda Mott
Ms. Christine Murphy
Mr. Daniel I. Murphy
Susan Murphy
Ms. Judith A. Nagle
Mrs. Karen Nemeth
Ms. Stephanie Nerges
Network For Good
Ms. Diane Newbury and Mr. Steven Berman
Ms. Olga Nielsen
Mr. Andrew Noorigian
Ms. Elizabeth Nork
Miss Emily Northington
Ellen Norton
Mr. Gregory J. Nowak Jr.
Dr. Christine I. Oaklander
Mr. Edward O'Brien
Dr. and Mrs. James R. O'Connell
Dr. Kristen Oehlrich
Mr. Peter O'Hara
Mrs. Marge Olkowski
Ms. Rosalyn Ominsky
Ms. Elizabeth Osborne
Judith Barbour Osborne

Ms. Denise Page
Mr. and Mrs. Francis Pallante
Ms. Rita Palrecha
Ms. Aleni Pappas and Mr. Anthony Kyriakakis
Miss Barbara Paquette
Mr. Christopher Parks
Ms. Belle B. Parmet
Miss Danielle Parsons
Mr. and Mrs. William C. Patterson
Mr. Lee T. Pearcy
Mr. and Mrs. Gary E. Pergolini Sr.
Mr. Mike Petz
Miss Moira Phillips
Mr. and Mrs. Tony Pillari
Ms. Jody Pinto
Peter and Caroline Piven
PJM Sunshine Club
M. J. Pohorilla
Ms. Sara Poindexter
Ms. Sonya Pollack
Ms. Mikaela Polman
Mr. Riley Powell
Ms. cheryl pozzi
Mr. Stephen Puma and Ms. Rebecca Crossfield
Dr. Renee Quarterman
Mr. Arthur L. Rack, Jr.
Miss Kellie Rados
Jeanette Ragucci
Ms. Julia Rainer
Katrina Ogle
Mr. and Mrs. Richard S. Ranck
Mrs. Ann L. Reed
Mr. and Ms. Timothy G. Reekie
Mr. Gregory Rendleman
Ms. Robin Resnick
Mr. Edward M. Resovsky
Rebecca Reumann-Moore and Andrew Moore
Mr. Edward A. Richards
Ms. Susan Richards
Mr. Craig A. Richman
Ms. Genevieve Ridgway
Ms. Anita B. Riley
Mr. Huston Ripley
Mr. Peter Ritchie
Mrs. Frances Rivera Alvelo
Mr. and Mrs. William H. Rivers Jr.
Ms. Stacey Rivkin
Ms. Deborah F F. Robbins
Ms. Lindsay Robbins
Mr. Joshua Roberts
Mr. Shepherd K. Roberts
Ms. Beth L. Rogers
Ms. Stephanie Rogers
Dr. and Mrs. Joel Rosenbloom
Ms. Wendy Rosenfield
Milton Rossman and Yvonne Paterson

Ms. Sara Jane Roszak
Mr. Dan Rottenberg
Mrs. Ramona Rousseau-Reid
Ms. Sally Rubenstein
Ms. Sheila Ruen
Ms. Jill A. Rupinski
Ms. Carol F. Rush
Ann Russell
Mr. Nathan Rutkowski
Mr. Charles E. Ryan
Miss Shannon Ryan
Ms. Caren Sachs
Ms. Phyllis L. Sacks
Ms. Svetlana Sakina
Ms. Barbara-Jo Saler
Mr. and Mrs. Jeffrey P. Sammak
Ms. Janet Samuel
Bruce Samuelson and Mary Spinelli
Mr. Abel Santamaria
Miss Darlene Sasz
Mr. and Mrs. Ralph Saul
Mr. Morton Saunders
Ms. Lucy Savarese
Mr. Douglas Schaller and Mr. David Barquist
Mr. and Mrs. Nicholas Scharff
Mr. Victor Schermer
Ms. Lois Schlachter
Ms. Rita Schmidt
Ms. Cara Schneider
Mr. and Mrs. Carl Schneider
Ms. Francine Renee Schneider
Richard G. Schneider
Mr. Andy Schön
Robin Schorr
Ms. Pam Schreiber
Ms. Daisy Schrock
Kate Royer Schubert
Mrs. Maxine Schwartz
Dr. Kathryn Schwenzler
Ms. Mary Schwinn
Mrs. George W. Scudder, Jr.
Segal Consulting
Mr. and Mrs. Gregory L. Segall
Mrs. Rebecca R. Segall and Mr. Gregory L. Segall
Nina Segre and Frank Furstenberg
Mr. and Ms. Jay Seid
Ms. Kathy Seufert
Ms. Ardan Sharp
Mr. and Mrs. Jeffrey Shaver
Mr. and Mrs. Edwin S. Sheffield
Dr. Oliver Shell
Ms. Hilda H. Shen
Ms. Susan Sheridan and Mr. Thomas Wallace
Mrs. Marciarose Shestack
Ms. Helen Holmstine Short
Ms. Elle Shushan

Mr. Andrew Siegel and Ms. Amy Sepinwall
Mr. James G. Siegel
Ms. Madeline Siegel
Ms. Andrea Silverman
Mr. and Mrs. Mark Siman
Mr. Jean Simard
Ms. Cynthia K. Sinclair
Ms. Stephanie Singer
Pat Slavek
Corey and Jonne Smith
Ms. Mary Sewell Smith
Mr. Paul D. Smith
Ms. Mina Smith-Segal
Justin and Rebecca Soffer
Mr. and Mrs. Arthur Solmssen
Robert Solomon
Mr. and Mrs. Duane G. Sonneborn
Mrs. Patricia Q. Spampinato
Ms. Anne F. Spencer
Mr. Gregg Sporar
Mr. Andrew Stahlert
Ms. Lisa Star
Ms. Stephanie Stern
Mr. and Mrs. Harvey Sternberg
Mr. and Mrs. George Scott Stewart
Ms. Trudy L. Stewart
Mrs. Julianne Stokes
Dr. Bayard T. Storey
Miss Rebeca Strapp
Mr. Bertram Strieb
Ms. Maureen Stubbs
Dr. Mark W Sullivan
Barbara Billings Supplee
Mr. and Mrs. Lee E. Tabas
Mr. Lee A. Tamaccio
Mrs. Judith Tanzer
Ms. Beth Taylor
Mr. John Taylor
Dr. and Mrs. Joel R. Temple
Mr. William G. Teodecki
Ms. Joy Thiessen
Ms. Barbara Thomas
Ms. Karen Thompson and Mr. Matthew Stover
Ms. Trish Thompson and Mr. Joel Katz
Mr. and Mrs. John C. Thomson
Mr. Steve Thornton
Mr. David Titus
Mr. Arthur Toback
Miss Kristina Tomljanovich
Dr. and Ms. Thomas Trojian
Dr. and Ms. Alan Troy
Mr. Jerzy Tufman and Ms. Deborah D. Wheeler
Mr. Tom A. Unger
University of Pennsylvania
Mr. John R. Urofsky
Mr. and Ms. Jean-Pierre Valin

Ms. Sarah Van Keuren
Ms. Kathryn T. Van Sciver
Mr. and Mrs. Michael Veloric
Ashley Vidal 211191
Leila Violano
Ms. Mary Lou Vitek
Dr. Julia Vu
Mr. Edward Wagner
Mr. Larry Waldroup
Mr. and Mrs. Richard C. Walker
Dr. pi waller
Ms. Hilary Walmsley
Mr. and Mrs. Tom Walther
Mr. Christopher Ward
Mrs. and Mr. Kathy Warden
Ms. and Mr. Laura Warnecke
Ms. Emily Warner
Ms. Nancy Warren and Mr. Kenneth J. Warren
Ms. Alice Waters
Mr. Thomas Watkins
Mr. Robert Curley
Mr. Alan Wechsler
Mr. Lee Weinstein
George H. Weiss M.D.
Mr. Joshua Werber
Mrs. Nancy Wessells
Ms. Sally Westmoreland
Mr. Drew Westveer
Ms. Susan Wexler
Ms. Karen Wheatley
Aiko Whiting
Mr. Kyle Whitmore
Miss Amy Widmayer
Ms. Emily Williams
Mr. Oliver P. Williams
Mr. and Mrs. David R. Wilmerding, Jr.
Mr. and Mrs. Allan D. Windt
Ms. Jane Winkel
Ms. Linda Winsett
Mrs. Suzanne Witt
Mr. and Mrs. George Woodward
Ms. Mary Beth Woolbert
Mr. and Mrs. Stephen Wouch
Ms. Barbara Wright
Ms. Jennifer Wright
Ms. Kathryn Wright
Mr. and Mrs. Clarence Z. Wurts
Mr. Nelson Yeardley III
Ms. Amy Young
Ms. Priscilla J. Young
Ms. Wendy Young-Collins
Mrs. Hollie Zaric
Mrs. Sybille Zeldin and Mr. Bill Brinkman
Miss Jing Zhang
Ms. Maria Zmurkewycz
Mr. Michael Zuckerman and Mr. Shaw Zuckerman

SCHOLARSHIP SUPPORTERS

Anonymous (2)
Mr. Jeffrey Bell
Ms. Patricia T. Boyer
Mr. Stephen Boyle
Dr. Kent Bream and Ms. Adele Fava
Mr. and Mrs. Donald A. Brown
Mr. Michael Butler
Mr. and Mrs. Charles E. Chase
Mr. and Mrs. Paul G. Chicos
Ms. Nancy Clipper
Mr. Thomas E. Cretella
Mr. and Mrs. John W. Fisher
Ms. Judi Garst
William and Joan Goldstein
Ms. Emily Green-Cain
Mrs. Lee Gunther-Mohr
Mr. Robert F. Henderson
Mr. Jonathan H. Hertzell and Ms. Linda G. Hertzell
Mr. and Mrs. Roy Kaiser, Jr.
Mr. and Mrs. Martin G. King
Mrs. Shirley Kobin
Mr. and Mrs. Michael R. Landa
Mr. David Larsson
Ms. Gabriele W. Lee
Mr. Kurt Leimbach
Ms. Marjorie Lewis
Dr. Nancy Lisagor and Mr. Frank Lipsius
Mrs. and Mr. Mary L. Lord
Mr. and Mrs. Winston I. Lowe, Esq.
Ms. Megan Maguire
Dr. Paula Max-Wright
Mr. and Mrs. Maureen McCarthy
Ms. Joan L. McClintock and Mr. Dick Greenwood
Ms. Anne Elizabeth McCollum
Mr. Thomas McGinley
Mr. John Morrison
Dr. Lauren Bock Mullins
Mr. and Mrs. Robert H. Mundheim
Ms. Jean A. Peyrat
Mr. and Mrs. Timothy Rabe
Ms. Stephanie Rogers
Mr. Charles E. Ryan
Mr. and Mrs. William H. Schorling, Esq.
Mr. Donald R. Schreiber
Mrs. Rebecca R. Segall and Mr. Gregory L. Segall
Selma Burke Sculpture Foundation
Mr. and Mrs. Neil Shah
Timothy and Kristina Shickley
Ms. Kathy Siple
Mr. Richard W. Snowden and Mr. Frederick Holzerman
Mr. and Mrs. Bill Steel
Mr. and Mrs. Leonard A. Sylk
Dr. John J. Tumola
Mr. and Mrs. Archbold D. van Beuren
W.W. Smith Charitable Trust

Mr. and Mrs. Greg Waldron
Mrs. Mary S. S. Williams
Ms. Pamela Morrison-Wolf and Mr. Guy W. Wolf
Ms. Sarah Wolfe
Mr. Richard E. Woosnam and Mrs. Diane Dalto
Woosnam
Mr. and Mrs. Stephen Zurad

PRIZE FUND SUPPORTERS

Ms. Linda Lee Alter
Mr. Geoffrey R. Berwind
Carlson Cultural Trust
Fine and Staud
Fred J. Rosenau Foundation
Gross McCleaf Gallery
Dr. and Mrs. Alan Gu Laties
Mrs. Hilarie V. Hawley
Mr. Paul M. Hummer, Esq.
Mr. Daniel D. Miller, Jr.
Mr. and Mrs. Marvin Riesenbach
Dr. and Mrs. Harold J. Robinson
Ms. Barbara W. Schaff
The Fellowship of PAFA
The Philadelphia Water Color Society
Winsor & Newton, Inc.
Woodmere Art Museum

TRIBUTE GIFTS

In Honor of Frieda Lefebber
Mr. and Mrs. Harvey Sternberg

In Honor of Thomas L. Bennett
Ms. Sally Rubenstein

In Honor of John Bryan
Ms. Nancy Clipper

In Honor of Julie Jensen Bryan
Mr. and Mrs. S. Matthews V. Hamilton, Jr.

In Honor of Marianne N. Dean
Mr. and Mrs. S. Matthews V. Hamilton, Jr.
Mr. and Mrs. David MacGregor
Mr. and Mrs. Allan D. Windt

In Honor of Murray Dessner
Mr. and Ms. Timothy G. Reekie

In Honor of William J. Farrell
Liberty Business Strategies

In Honor of Barbara Kahn
Ms. Patricia Conn

In Honor of Anne E. McCollum
Mr. Robert McCollum

In Honor of Janice Peck
Mr. and Mrs. Allan D. Windt

In Honor of Zachary Pelta-Heller
Dr. Wendy Forman and Mr. Alan Forman

In Honor of Connie Stephens
Ms. Sally Westmoreland

In Memory of Joeseeph Amarotico
Mr. Huston Ripley

In Memory of Rubin Blavat
Ms. Francine Renee Schneider

In Memory of Anne P. Bryan

Mr. Stephen Boyle
Ms. Nancy Clipper
Ms. Emily Green-Cain
Mr. David Larsson
Ms. Jean A. Peyrat
Mr. and Mrs. Stephen Zurad

In Memory of Matina Chigounis
Ms. Martina Harris
Panagiotis Lazaropoulos lazaro

In Memory of Justine Cretella
Mr. Thomas E. Cretella

In Memory of Barbara L. Greenfield
Mrs. Samuel M.V. Hamilton
Segal Consulting

In Memory of Nancy L. Guthrie

Ms. Davita Allie
American Capital Management, Inc.
Mr. and Mrs. Ernest L. Biddle, Jr.
Ms. Kimberly Bleiler
Ms. and Mr. Sharon Bonannie
Mr. Carl Cordek
Mr. and Mrs. Darrell L. DeMoss
Dr. and Mrs. Thomas Drake
Joan Gorrell
Mrs. Margot M. Rowley and Mr. Chandrakant R.
Gupta
Mr. William J.D. Jordan
Mr. and Mrs. Jules Kay
Mr. and Mrs. James L. Kermes
Mr. and Mrs. John Klose
Mr. Alexander Ludwig
Mr. and Mrs. R. Scott MacKay

Mr. and Mrs. Sheldon B. Margolis
Mr. and Mrs. William L. McCullen
Mr. and Mrs. Eugene Judson Mitchell
Mr. Peter O'Hara
Mr. and Mrs. Tony Pillari
Ms. Andrea Silverman
Mr. and Mrs. William Lloyd Snyder, III
Mr. and Mrs. Duane G. Sonneborn
Ms. Trudy L. Stewart
Mr. and Mrs. John C. Thomson
Mr. Steve Thornton
Ms. Mary Lou Vitek
Mr. and Mrs. Allan D. Windt
Mrs. Suzanne Witt

In Memory of Deborah M. Henderson

Mr. Jeffrey Bell
Mr. and Mrs. Donald A. Brown
Mr. and Mrs. Paul G. Chicos
Mr. and Mrs. John W. Fisher
Ms. Joan L. McClintock and Mr. Dick
Greenwood
Mr. Robert F. Henderson
Mrs. Shirley Kobin
Mr. Kurt Leimbach
Mrs. and Mr. Mary L. Lord
Dr. Paula Max-Wright
Mr. and Mrs. Maureen McCarthy
Mr. Thomas McGinley
Mr. John Morrison
Dr. Lauren Bock Mullins
Mr. Donald R. Schreiber
Ms. Kathy Siple
Mr. and Mrs. Bill Steel
Ms. Nancy F. Sykes
Dr. John J. Tumola
Mr. and Mrs. Greg Waldron
Mrs. Mary S. S. Williams
Ms. Pamela Morrison-Wolf and Mr. Guy
W. Wolf
Ms. Sarah Wolfe

In Memory of Mildred T. Lefkoe
Dr. and Mrs. Roy T. Lefkoe
Miss Sydney Ann Lefkoe

In Memory of Patricia H. Lynn
Mr. Andrew L. Fielding
David and Beth Medoway Kagan
Ms. Nancy Lynn

In Memory of James Mahoney
Ms. Nancy Allen
Mrs. Mary Cardona
Cornwells Elementary
Ms. Carole Heys

Ms. Diane Jackson
Mrs. Janet E. Maher
Mrs. Marge Olkowski
Ms. Rita Schmidt

In Memory of Sondra W. Margolies
Ms. Marcia Groverman

In Memory of Rosalind A. Ritchie
PJM Sunshine Club
In Memory of Raymond Rosenberg
Justin and Rebecca Soffer

In Memory of Hannah Shickley
Mr. and Mrs. Michael R. Landa

JOHN W. MERRIAM PLANNED GIVING SOCIETY

Anonymous (3)
Mr. and Mrs. Roger H. Ballou
Barbara* and John Bartlett
Pearl M. Carpel
Jonathan L. Cohen
Steven Cohen
Linda Dessner
Mrs. Barbara and Leonard Frank
Kenneth F. Herlihy
Katharine K. Hoyler*
Evelyn Rypins Kaplan*, In Memory of Will Kaplan
Mr. and Mrs. Maurice H. Katz
Ms. Emily Klebanoff
Jordan Klinefelter
The Estate of Kenneth D. Kopple
Gabriele W. Lee
Mr. and Mrs. H.F. (Gerry) Lenfest
Nina Martino
Anne Elizabeth McCollum
Daniel D. Miller Jr.
Ellen Cole Miller*
Mr. Donald S. Owings
Ms. Sally S. Richards
Raymond D. Rubens* and Estelle Rubens
Dr. and Mrs. Erwin M. Saniga
Barbara L. Sosson
Robert H. Sweet, In Memory of Janet V. Sweet

BEQUESTS

Mr. Edward B. Clay, Jr.
Ms. Jeanne Coryell
Mrs. Evelyn Rypins Kaplan
Mr. Kenneth D. Kopple
Ellen Cole Miller
Mrs. Joan B. Prewitt

ANNUAL STUDENT EXHIBITION

Partner

Beneficial Bank
Blick Art Materials
Econsult Solutions
Haverford Trust Company
Mrs. J. Maxwell Moran

Master

12th Street Catering
Julie Jensen Bryan and Robert Bryan
Mrs. Marianne N. Dean
Kamelot Auction House
Ms. Caryn Kunkle
Land Collective
Mr. Michael Metelits
Shreiner Tree Care
Mr. and Mrs. Henry B. du P. Smith

Scholar

Mr. Bud Baroni
Mr. and Mrs. William C. Buck
Mr. and Mrs. Richard J. Halloran
Mr. and Mrs. Harold Hambrose
Ms. Kathleen D.B. McCoy
Philadelphia Trust Company
Mr. and Mrs. Sashi Reddi
The Philadelphia Hand Center
Philanthropist
Anonymous (3)
Achille F. Barone Foundation
Dr. & Mrs. Todd Albert
Julie and Jim Alexandre
Ms. Linda Lee Alter
Mr. and Mrs. Roger H. Ballou
Ms. Lynda Barness
Mr. Richard K. Barnhart
Mr. David Benway and Ms. Nicole McLaughlin
Mr. and Mrs. James C. Biddle
Mr. Hanley Bodek
Mr. and Mrs. Larry E. Boerder
Linda Aversa-Caldwell and Donald R. Caldwell
Mr. Richard Carlstrom and Mr. Joel Samuels
Mr. and Mrs. Robert Chevalier
Mr. Elliot H. Clark
Mr. and Mrs. Richard M. Cole
Mrs. Wendy Costa
Mr. Arthur Dantchik
Mr. and Mrs. Darrell L. DeMoss
Mr. and Mrs. Kevin F. Donohoe
Monica and Dan DiLella
Mr. and Mrs. Brian Effron
Ms. Jane Fortune and Dr. Robert R. Hesse
Mr. and Mrs. Bruce A. Gillespie
Dr. James L. Goodwill
Mr. David W. Haas

Hamilton Family Foundation
Mr. and Mrs. S. Matthews V. Hamilton, Jr.
Mr. and Mrs. William P. Hankowsky
Ms. Susan M. Hendrickson
Mr. David Hoffman
Mr. and Mrs. Raymond E. Ix, Jr.
Mr. and Mrs. Michael Kalogris
Mr. and Mrs. Jules Kay
Mr. and Mrs. Robert W. Kennedy
Mr. and Mrs. Martin G. King
Ms. Jannie K. Lau and Mr. Todd C. Longsworth
Mr. and Mrs. Stephen Lazovitz
Mr. and Mrs. Christopher Le Vine
Mr. and Mrs. H.F. Lenfest
Leo Model Foundation
Mr. and Mrs. Peter Leone
Mrs. Sueyun Locks
Mr. and Mrs. Winston I. Lowe, Esq.
Mr. and Mrs. Albert P. Matteo, Jr.
Mr. and Mrs. William Mezzanotte
Mrs. Carolyn B. Nagy
Mr. and Mrs. John J. Nesbitt III
Ms. Janis O'Connor
Mr. James E. O'Neill and Mr. David A. Rubin
Mrs. and Mr. Janice Peck
Ms. Laurie Phillips
Mr. and Mrs. Mark Raab
Mr. Jeffrey Reinhold
Mr. and Mrs. Herbert S. Riband, Jr.
Dr. Keith M. Robinson
Mr. Will W. Sachse
Mr. and Mrs. Gregory L. Segall
Mr. and Mrs. Samuel R. Shipley, III
Ms. Beth Snider
Mr. Richard W. Snowden and Mr. Frederick Holzerman
Ms. Alicia A. Sterling
The Karma Agency
Mr. and Mrs. Brian P. Tierney
Mr. Richard Vague
Mr. and Mrs. Archbold D. van Beuren
Ms. Patricia Wellenbach
Mr. and Mrs. Allan D. Windt
Ms. Nancy Winkler and Mr. John Bryan
Mr. and Mrs. Kenneth Woodcock
Mr. Joseph S. Zuritsky

Connoisseur

Mr. and Mrs. William H. Annesley III
Ms. Regina Voit Baime and Mr. Peter Liguori
Mrs. Kathie Bell and Mr. Jeffrey Graham Bell
Dr. and Mrs. Wade H. Berrettini
Mr. and Mrs. Ernest L. Biddle, Jr.
Ms. N. J. Broudy
Mr. and Mrs. Lawrence Brown
Mr. Brian Carter

Ms. Christiane Casella and Mr. Stephen Dansky
Ms. Lindsay Cooper
Ms. Karin Copeland
Ms. Ximena Coriat
Mrs. Judith Creed and Mr. Robert Schwartz
Mr. and Mrs. Joseph D. Culley, Jr.
Mr. and Mrs. Samuel M. Earle
Ms. Heather Richards Evans
Mr. William J. Farrell II
Ms. Pamela Felice
Dr. Bradley Fenton and Dr. Marie Savard
Mr. and Mrs. Paul Finley
Mr. and Mrs. David A. Fleischner
Mr. and Mrs. Robert I. Friedman
Dr. Katherine Galluzzi
Mr. and Mrs. Edward Garno III
Bruce Giantonio and James Leipold
Mr. and Mrs. Alex Gibbons
Ms. Barbara Gisel
Mr. and Mrs. Richard W. Graham
Mr. and Mrs. David Gregory
Mr. Brandon Halbert
Thomas J. Heitzman
Mr. and Mrs. Anthony Hitschler
Mr. David F. Jones
Ms. Michelle S. Karbinger
Gilbert and Rebecca Kerlin
Mr. and Mrs. James L. Kermes
L & F Holdings, LLC
Mr. and Mrs. Jerry Lehocky
Mr. and Mrs. Brook J. Lenfest
Dr. and Mrs. Donald M. Levinson
Mr. and Ms. David G. Marshall
Mr. and Mrs. Samuel Mason
Mr. and Mrs. Charles E. Mather III
Ms. Anne Elizabeth McCollum
Mr. and Mrs. John B. McGowan
Mr. and Mrs. Britton Murdoch
Dr. and Mrs. J. Brien Murphy
Mrs. Harry R. Neilson, Jr.
Mr. Alasdair Nichol
Mr. and Mrs. Eric W. Noll
Ms. Patti Owens
Mr. and Mrs. Mark Pagon
Ms. Aleni Pappas and Mr. Anthony Kyriakakis
Mr. and Mrs. Dean C. Pappas
Ms. Beatrice S. Pitcairn
Mr. and Mrs. Aaron Polak, Esq.
Ms. Rebecca Bien and Dr. David Poll
Ms. Kathryn Rhodes
Richard C. von Hess Foundation
Ms. Gretchen Roede and Mr. Richard Burr Pedranti
Mr. and Mrs. Bruce J. Rudin
Mr. John M. Ryan and Ms. Mary G. Gregg
Mr. and Mrs. Howard J. Sacks
Mr. and Mrs. Jim Sage

Dr. and Mrs. M. William Schwartz
Mr. and Mrs. Michael Selverian
Dr. and Mrs. Hass Shafia
Dr. and Mrs. Howard Snyder
Mr. and Mrs. Robert N. Spahr
Mr. Timothy Patric Speiss
Mrs. Joly W. Stewart
Keith and James B. Straw
Mrs. Anne Rouse Sudduth
Mr. and Mrs. Leonard A. Sylk
The Little House Shop
Ms. Pamela Trimmingham and Mr. David Pierson
Mrs. Allison Walsh
Ms. Gina Ward
Mr. and Mrs. Robert Weiser
Richard Wild
Honorable Constance H. Williams
Mr. Richard E. Woosnam and Mrs. Diane Dalto
Woosnam
Ms. Kathryn Wright

BACCHANAL WINE GALA AND AUCTION

Presenting Sponsor
Haverford Trust Company

Major Sponsor

Kistler Tiffany Benefits

Benefactor Sponsors

FirstService Brands
Janney Montgomery Scott LLC
Quaker Chemical Corporation
The Rittenhouse Hotel
Patron Sponsors
Cross Atlantic Capital Partners, Inc.
Dentons USA LLP
Liberty Property Trust
Public Financial Management, Inc.

Friend Sponsors

Amber Road
Delaware River Stevedores, Inc.
EisnerAmper LLP
Fly Advanced
Foxcode, Inc.
John Toates Architecture & Design
Kistler Tiffany Advisors
Morgan Stanley Wealth Management
Wein Interiors
Wilmington Trust Company

Wine Sponsors

Boisset Family Estates
Capital Wine and Spirits, Inc.

Southern Wine & Spirits

Auction Sponsor

Sotheby's

Hotel Sponsor

Four Seasons Hotel Philadelphia

Media Partner

Philadelphia Magazine
PR and Marketing Partner
Gloss PR

In-Kind Partners

a.kitchen + bar
Capital Wine and Spirits, Inc.
Joan Shepp
Lacroix at Rittenhouse Hotel
Rouge
Southern Wine & Spirits

Premier Benefactors

Ms. Kathleen S. Allison and Mr. John Earle
Amagansett Wine and Spirits, LTD.
Mr. Richard M. Barnhart
Mr. and Mrs. Thomas L. Bennett
Mr. and Mrs. James C. Biddle
Mr. and Mrs. Paul de Janosi
Mr. and Mrs. Robert L. Byers
Linda Aversa-Caldwell and Donald R. Caldwell
Cellar Advisors
Mr. Elliot H. Clark
Mr. and Mrs. Norman U. Cohn
Mr. and Mrs. Keith Cox
Mr. and Mrs. Gene Daly
Domaine Serene
Mr. and Mrs. Kevin F. Donohoe
Mr. and Mrs. David Field
Gallagher Bollinger
Ms. Lori Gehret
Ms. Rhonda Linnett Graber
Green Drake Partners, LLC
Mr. and Mrs. Richard J. Halloran
Ms. Susan M. Hendrickson
Hersha Hospitality Trust
Dr. Larry R. Kaiser and Ms. Lindy Snider
Mr. and Mrs. Michael Kalogris
Mr. and Mrs. Nicholas Kovich
Mr. and Mrs. Christopher Le Vine
Mr. and Mrs. Sheldon B. Margolis
Ms. Anne Elizabeth McCollum
Ms. Lisa D. Kabnick and Mr. John H. McFadden
Dr. and Mrs. William McGowan
Mr. and Mrs. Kenneth Mitchell
Mr. Jonathan H. Newman

Mr. Norman Olson
Franz Rabauer and Brian Daggett
Mr. and Mrs. Andrew M. Reder
Mr. and Mrs. Gregory L. Segall
Mr. and Mrs. Henry B. du P. Smith
Mr. Richard W. Snowden and Mr. Frederick
Holzerman
Dr. Stephen G. Somkuti, M.D.
Stephen Starr Events
Liz Denney and John Toates
Mr. and Mrs. Jay H. Tolson
Rebecca and Richard Wein
Mr. Vincent Nicholas Willis
Ms. Nancy Winkler and Mr. John Bryan
Ms. Lisa M. Witomski and Mr. James A. Scott
Mr. Richard E. Woosnam and Mrs. Diane Dalto
Woosnam

Benefactors

Julie and Jim Alexandre
Mrs. Benjamin Coates
Mr. and Mrs. Jerome F. Dean
Mr. William J. Farrell II
Mr. John Gehret
Mr. and Ms. Roger Gehring
Mr. and Mrs. Philip Harper
Mr. and Mrs. Christopher Le Vine
Mr. J. F. Merz, Jr.
Mr. and Mrs. Jim Sage
Mr. Timothy Patric Speiss

Patrons

Mr. and Mrs. David J. Berkman
Mr. and Mrs. Fouad Chartouni
Ms. Evelyn Cintron
Ms. Rachel Constantine
Foley Family of Wines
Mr. and Mrs. Winston I. Lowe, Esq.
Mr. Gregory Moore
Mr. Marc S. Richman
Dr. and Mrs. Robert H. Rock
Mr. Edward Schoenfeld
Mr. Michael Shannon
Treasury Wine Estates
Mr. and Mrs. Stephen Walsh
Mr. and Mrs. Jeffrey Yass

Friends

Ms. Adele Betz
Mr. Leslie Brun
Gretchen and Stephen Burke
Mr. and Mrs. Charles E. Chase
Mr. and Mrs. William Doucas
Kosta Winery
Mr. Peter Mondavi Jr.
Dr. Janet Szabo

Benefit Auction

Dr. Kent Bream and Ms. Adele Fava
Mr. Michael Butler
Mr. and Mrs. Charles E. Chase
Ms. Judi Garst
William and Joan Goldstein
Mr. and Mrs. Roy Kaiser, Jr.
Mr. and Mrs. Martin G. King
Dr. Nancy Lisagor and Mr. Frank Lipsius
Mr. and Mrs. Winston I. Lowe, Esq.
Ms. Megan Maguire
Ms. Anne Elizabeth McCollum
Mr. and Mrs. Timothy Rabe
Ms. Stephanie Rogers
Mr. Charles E. Ryan
Mr. and Mrs. William H. Schorling, Esq.
Mrs. Rebecca R. Segall and Mr. Gregory L. Segall
Mr. and Mrs. Neil Shah
Mr. Richard W. Snowden and Mr. Frederick
Holzerman
Mr. and Mrs. Leonard A. Sylk

FOUNDATION, GOVERNMENT, CORPORATE, AND OTHER SUPPORTERS

Foundations

Alpin J. and Alpin W. Cameron Memorial Fund
Amaranth Foundation
Christian and Mary Lindback Foundation
David A. and Helen P. Horn Charitable Trust
Dolfinger-McMahon Foundation
Hassel Foundation
Locks Family Foundation
Louis N. Cassett Foundation
Milton and Sally Avery Arts Foundation, Inc.
MKM Foundation
PNC Foundation
Richard C. von Hess Foundation
Terra Foundation for American Art
The 1830 Family Foundation
The Armand G. Erpf Fund
The Barra Foundation, Inc.
The Bradley Family Charitable Foundation Trust
The Brook J. Lenfest Foundation
The Dry Family Foundation
The Howard J. Sedran Family Foundation
The Snider Foundation
The Victory Foundation
Thornedge Foundation
Tuttleman Family Foundation
W. Percy Simpson Trust
Wyeth Foundation for American Art

Government Support

Institute of Museum and Library Services

National Endowment for the Arts
Pennsylvania Council on the Arts
Philadelphia Cultural Fund
Corporate Exhibition Support
Christie's
Pennsylvania Trust Company
W. Atlee Burpee & Co.

BUSINESS PARTNERS

Business Patron Members

Artay, Inc.
Christie's
Conestoga Bank
Haverford Trust
Business Benefactor Members
PNC Bank Foundation
Business Council Members
Amber Road
Beneficial Bank
Blick Art Materials
Brown Brothers Harriman
Bryn Mawr Trust
Cross Atlantic Capital Partners
Dentons US LLP
Econsult Solutions, Inc.
FirstService Brands
Janney Montgomery Scott
Kistler Tiffany Benefits
Liberty Property Trust
Merit Service Solutions
PECO
Pennsylvania Trust
Public Financial Management
Quaker Chemical Corporation
Stradley Ronon Stevens & Young
TD Charitable Foundation
Wilmington Trust Company

Business Associate Members

Aqua Pennsylvania
Buchanan Ingersoll & Rooney PC
Cozen O'Connor
Elliot-Lewis
Freeman's
Keystone Property Group
Parkway Corporation
Saul Ewing LLP
Stephen STARR Events
United Health Services, Inc
Westlake Reed Leskosky

Educational Improvement Tax Credit Program Supporters

Aqua America
Artay, Inc.

Brown Brothers Harriman & Co.
Conestoga Bank
Elliott Lewis Corporation
Keystone Property Group
Universal Health Services, Inc.

University Basic Members

Art Institute of Philadelphia
Hussian School of Art
La Salle University
Rowan University
Rutgers University
St. Joseph's University
Temple University
Thomas Jefferson University
University of Delaware
University of Pennsylvania
University of the Arts
Villanova University
Library Dual Members
Abington Township Public Library
Burlington County Library
Camden County College Library
Gloucester City Library
Library Single Members
Camden County Library
Collingswood Free Library
Elkins Park Free Library
Fox Chase Library
Free Public Library of Audubon
Friends of the Ewing Library
Friends of the Free Library of Northampton Township
Friends of the Huntingdon Valley Library
Glenside Free Library
Haddon Heights Public Library
Haddonfield Public Library
Margaret E. Heggan Library
Middletown Free Library
Monroe Township Library
Moorestown Library
Mount Laurel Library
Pennsauken Free Public Library
Princeton Public Library
Swarthmore Public Library
The Free Library of New Hope and Solebury
Upper Moreland Free Public Library
West Windsor Branch of the Mercer County Library
Wissahickon Valley Public Library

GIFTS IN-KIND

12th Street Catering
Ms. Jackie Allen
Amagansett Wine and Spirits, LTD.
Ashton Cigar Bar

Mr. Richard M. Barnhart
Mr. and Mrs. Ernest L. Biddle, Jr.
Bluefin Restaurant
Boyd's Philadelphia
Mr. and Mrs. Paul de Janosi
Linda Aversa-Caldwell and Donald R. Caldwell
Capital Grill
Cellar Advisors
Mr. and Mrs. Fouad Chartouni
Christie's
Ms. Evelyn Cintron
Mr. and Mrs. Roger Clarke
Ms. Rachel Constantine
Continuum Estate
Mr. and Mrs. Keith Cox
Domaine Serene
Mr. and Mrs. Kevin F. Donohoe
Ms. Shawn Dore
Duckhorn Vineyards
Mr. and Mrs. Samuel M. Earle
Econsult Solutions
Mr. and Mrs. Michael F. Floyd
Foley Family of Wines
Freeman's
Mr. and Mrs. William B. Fretz, Jr.
Gallagher Bollinger
Ms. Lori Gehret
Mr. and Mrs. Richard J. Halloran
Mr. and Mrs. Kenneth F. Herlihy
Herradura Tequila
Home Grown
Ms. Patricia B. Ingersoll
Jack Daniels Distillery
Ms. Barbara Katus
Korbrand
Kosta Winery
Mr. and Mrs. Nicholas Kovich
Mr. and Mrs. Jeff Krohn
Land Collective
Le Meridien Philadelphia
Mr. and Mrs. Christopher Le Vine
Mr. and Mrs. H.F. Lenfest
Mr. Larry Maguire
Maison Trimbach
Mr. and Mrs. Sheldon B. Margolis
Ms. Anne Elizabeth McCollum
Ms. Anne Elizabeth McCollum
Ms. Lisa D. Kabnick and Mr. John H. McFadden
Dr. and Mrs. William McGowan
Moet Hennessey
Mr. Peter Mondavi Jr.
Mr. Gregory Moore
Morlet Family Vineyards
Mr. Norman Olson
Palm Bay Imports
Quintessential Wines

Franz Rabauer and Brian Daggett
Ramey Wine Cellar
Ms. Helene Rosenthal
Mr. Edward Schoenfeld
Mr. and Mrs. Henry B. du P. Smith
Dr. Stephen G. Somkuti, M.D.
Sonoma Cutrer Vineyards
Stephen Starr Events
The Barnes Foundation
Toppers Spa and Salon
Treasury Wine Estates
Trinchero Family Estates
Rebecca and Richard Wein
Mr. Richard E. Woosnam and Mrs. Diane Dalto
Woosnam
Mr. Charles D. Wright

BOARD OF TRUSTEES

Officers

Kevin F. Donohoe, Chairman
Thomas L. Bennett
James C. Biddle
Anne E. McCollum
Thomas N. Pappas
Herbert S. Riband

Trustees

James L. Alexandre
Roger H. Ballou
Donald R. Caldwell
Mr. Valentino D. Carlotti
Charles E. Chase
Elliot Clark
Jonathan L. Cohen
Monica E. Duvall DiLella
William J. Farrell
Robert Friedman
John A. Fry
William P. Hankowsky
Edward T. Harvey
Susan Hendrickson
Dorothy M. Ix
Ro King
Joel M. Koppelman
Marguerite Lenfest
Francis J. Leto
Sara Lomax-Reese
Winston I. Lowe
Frances M. Maguire
Albert P. Matteo
Jonathan H. Newman
James E. O'Neill
Sashi Reddi
Gretchen Roede
Theodore O. Rogers
Steven L. Sanders

William H. Schorling
Henry B. duPont Smith
Richard W. Snowden
Julie Spahr
Barbara A. Sylk
Richard W. Vague

Ex-Officio

David R. Brigham
Mrs. Linda Aversa Caldwell
Mr. Gregory Fox
Jill Rupinski
Mr. David C. Wilson

Emeritus

Mr. John B. Bartlett
Robert L. Byers
Charles E. Mather
Samuel J. Savitz
William A. Slaughter
Mr. Harold Sorgenti
Richard E. Woosnam
Mrs. Debora C. Zug

Honorary

Mrs. Samuel M.V. Hamilton

WOMEN'S BOARD

Executive Committee

Linda Aversa Caldwell, President
Marianne N. Dean
Sharla M. Floyd
Roz Gibbons
Gale S. Gillespie
Maggie Malone Murphy
Carolyn Nagy
Janis O'Connor
Janice Peck
Mimi Snyder

Active Members

Georgeann M. Ballou
Kathie M. Bell
Christine H. Berrettini
Diana H. Bittel
Julie Jensen Bryan
Amanda Burden M.D.
Kathleen Cannon
Ximena Coriat
Julia B. DeMoss
Pamela Doyle
Dona Duncan Wolfe
Bobette Leidner Fisk
Ashlee Fuglio
Barbara L. Greenfield

Susan Eaton Guill
Pia M.E. Halloran
Johanna S. Hambrose
Rosemary Hankowsky
Dorothy Mather Ix
Connie Kay
Caryn Kunkle
Sandra G. Marshall
Mary MacGregor Mather
Nicole McLaughlin
Sandra Mezzanotte
Susan B. Muller
Sandra L. Nesbitt
Lisa O'Connell
Carmen Navarro Pelaez
Camille Peluso
Ashwini Reddi
Lalla de Rham
Katie Rhodes
Donna Salvo
June M. Smith
Alicia A. Sterling
Ashley Stewardson
Clare Stuempfig
Robbi Toll
Robin H. Windt
Kathryn Quinn Wright

Associate Members

Carol Blank Barsh
Ana B. Biddle
Rhea Brooks
Diana Sinkler Clagett
Lea Cohn
Patricia Q. Connolly
Ibitz Dolan
Dudy Fergusson
Stacy W. Fiechter
Lois Fischer
Jane Fortune
Geraldine Dietz Fox
Laura H. Gardiner
Nancy L. Guthrie
Eileen H. Hinkson
Penelope M. Hunt
Melissa K. Ingersoll
Ana Maria Keene
Patricia P. Kermes
Barbara C. Kligerman
Carrie Lawlor
Bobette R. Leidner
Mrs. Howard H. Lewis
Deborah T. Mangel
Anne E. McCollum
Kathleen D. B. McCoy
Elizabeth McIlvain

Laura Morris
Karyn A. Mullen
Janneke Seton Neilson
Nancy Shaw Palmer
Dottie Sheffield
Meredith S.S. Smith
Sara Steele
Bobbie Turner
Patricia Stewart Walsh
Susan W. West
Members at Large
Margaret (Pixie) Biddle
Lynn Lehocky
Eleanor Pierson

DOCENTS

Edith Agard
Beverly Anderson
Bruce Anderson
Penny Bernick
Maxine Brodo
Louise Christopher
Gwen Douse
Dona Duncan-Wolfe
Sheila Ellman
Fradele Feld
Robert Fischl
Sonya Garfinkle
Karen Gelfand
Harriet Goodwin
Sharline Heller
Elaine Jaffe
Joan Jeruchim
Rochelle Kaufman Katuran
Marita J. Krivda
Ned Levine
Florence Lovitz
Shirlee Maglietta
Jane Mason
Naida Mosenkis
Stephanie Nerges
Joan Quann
Ruth Rothman
Renee Saul
Jo Ann Simon
Jane Slater
Danièle Thomas-Easton
Robyn Treinish
Patricia Zolfaghari

STAFF

Aliese Andersen
Laura Beard
Marita Blackney
Anne Boisvert
Brian Boutwell

David Brigham
Nathanael Brouhard
Alison Campbell-Wise
Stephen Coleman
Steven Connell
Robert Cozzolino
Vy Dang
Anthony DeCocinis
Brian Duffy
James Gaddy
Michael Gibbons
Nora Granahan
Kayla Gray
Paula Green
Jimmie Greeno
John Greig
Elizabeth Hamilton
ZP Heller
Richard Henderson
Matthew Herzog
Lori Hines
Tish Ingersoll
Jennifer Johns
Zachary Joseph
Clint Jukkala
Melissa Kaiser
Barbara Katus
Sheryl Kessler
Abby King
Mark Knobelsdorf
Daniel Kolodny
Michael Kowbuz
Andrew Lapatina
Keith Leitner
JoAnn Loviglio
Cecily Macy
Anna Marley
Kevin Martin
Gregory Martino
Mary McGinn
Peter Medwick
Dana Moore
Leigh Moser
Lindsey G. Nevin
Michael O'Connell
Heather Paroubek
Larry Passmore
Katie Petrillo
Harry Philbrick
Ed Poletti
Elizabeth Racheva
Heike Rass
Gale Rawson
Ramon Rochester
Diani Safdey
Katie Samson

Alexandra Seder
Colette Seidel
Dana Shafer
Dressler Smith
Madeleine Smith
CJ Stahl
Anne Stassen
AJ Sutton
Allison Syvertsen
Tiffany Tate
Jay Thistlewood
Judith Thomas
Jodi Throckmorton
Hoang Tran
Peter Tran
Andre van de Putte
Lucas Van Meter
Ana Vizcarra-Rankin
Laura Warnecke
Sarah Weidenauer
Kawyne Williams
Brittany Willis
Liesl Wuest
Monica Zimmerman

FACULTY

Emily Abendroth
Kassem Amoudi
Juliette Aristides
Martha Armstrong
Jan Baltzell
Sarah Beetham
Mark Blavat
Karima Bouchenafa
Astrid Bowlby
Mr. David Brewster
Kate Brockman
Moe Brooker
Emily Brown
Sharon L. Butler
David C. Campbell
Roger Chavez
Lesla Chittenden Lim
Anthony Ciambella
Patrick Connors
Tom Csaszar
David Dempewolf
Mr. Vincent Desiderio
Abigail Deville
Mr. Aniello C di Sabato
Billy Dufala
Ms. Dona Duncan
Pavel Efremoff
Kamili Feelings
Mr. Joel Fisher
Renee Foulks

Mr. Lawrence Francis
Michael Gallagher
Hope Gangloff
Linda Gist
Eileen Goodman
Neysa Grassi
Denise Green
Mr. Daniel Greene
John Greig
Michael Grimaldi
Zlatan Gruborovic
Albert Gury
Paul Hamanaka
Lisa Hamilton
Daniel Heyman
Elizabeth Hill
John Horn
Erik Horvitz
James Hyde
Gillian Jagger
Clint Jukkala
Alex Kanevsky
Titus Kaphar
Frederic Kaplan
Everett Kinstler
Scott Kip
Joshua Koffman
Mr. Michael Kowbuz
Christine Lafuente
Phyllis G Laver
Earl Lewis
Mr. Gilbert B Lewis
Jonathan Mandell
Michael Manley
Joshua Marsh
Douglas Martenson
Virgil Marti
Carolina Maugeri
Daniel Miller
Michael Moore
Kate M Moran
Charles Muldowney
Ryan Muldowney
Eileen Neff
Steven Nocella
William Scott Noel
David Nolan
Ernie Norcia
Colleen O'Donnell
Elizabeth Osborne
Roberto Osti
Jennifer Packer
Stefan Perun
Sarah Peters
Jody Pinto
Carolyn G Pyfrom

Rosae Reeder
Celia Reisman
Kevin Richards
Robert Roesch
Anthony Rosati
Michael Rossman
Jill Rupinski
Hironori Sakaguchi
Bruce Samuelson
Judith Schaechter
Bill Scott
Stephanie Sena
Clarissa Shanahan
Claire Sherman
Stuart Shils
Stephen Smith
Ms. Christine Stoughton
Joseph Sweeney
Lisa Sylvester
Allison Syvertsen
James Toogood
Richard Torchia
Patricia Traub
Peter Van Dyck
Robert Waddington
Gary Weisman
David Wilson
Ronald Wyffels
Theodore Xaras
Jennifer Zwilling
*deceased