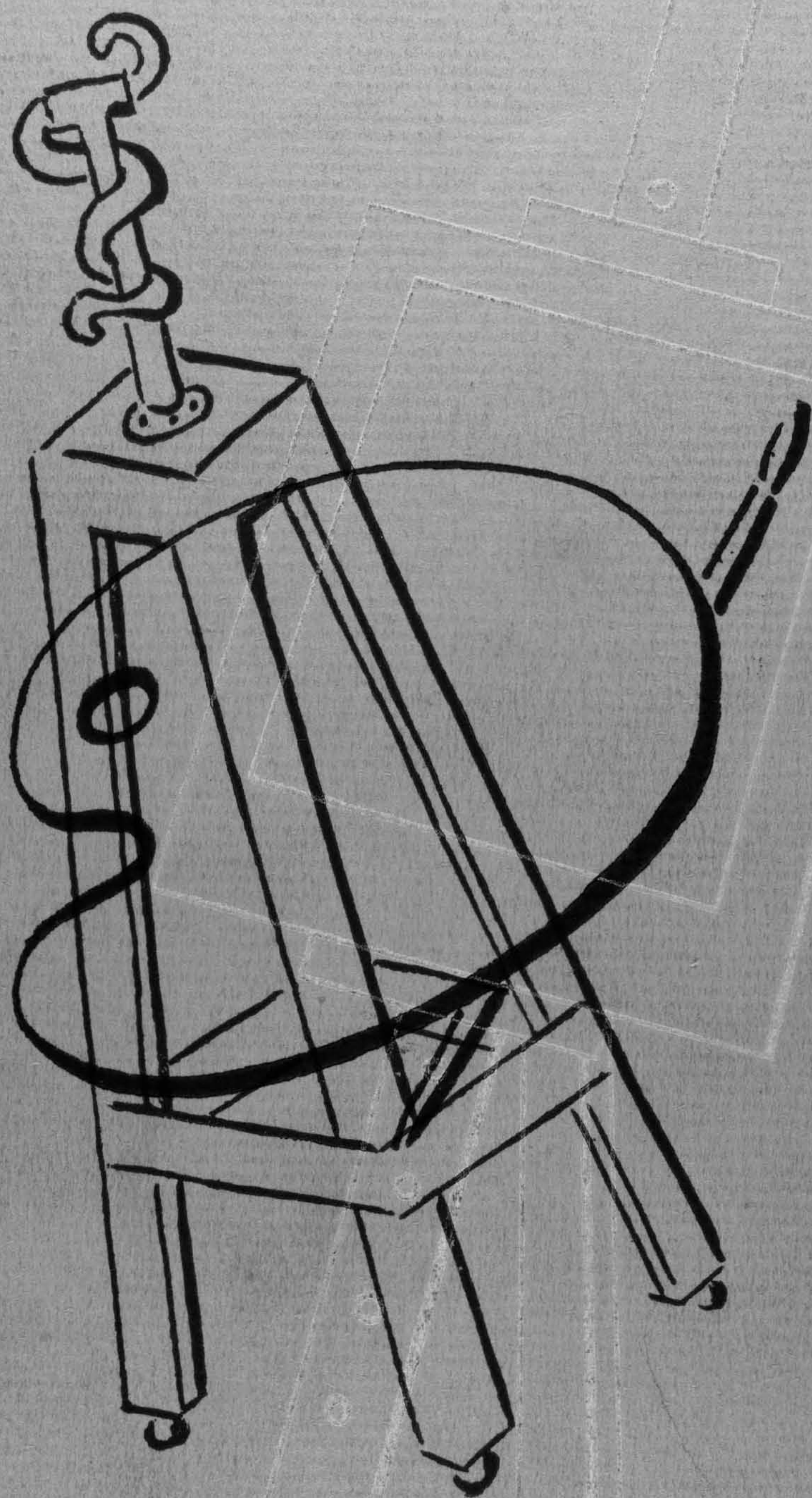


WINTER SCHOOL CIRCULAR · 1941-1942



THE PENNSYLVANIA ACADEMY OF THE FINE ARTS

BROAD AND CHERRY STREETS, PHILADELPHIA, PA.
THE OLDEST FINE ARTS SCHOOL IN AMERICA · 1806

The Academy fulfills in ideal completeness the whole necessity of the fine arts. Its function as one of the greatest American galleries presents the public with its opportunity for heightened appreciation and enjoyment and, on the other hand, its students with an easy and intimate contact with the best of past and contemporary art. Its maintenance of one of the most eminently renowned schools, winter and summer, fulfills its original pledge in providing students with their technical foundation and esthetic background. This circular contains detailed information relative to the Winter School in Philadelphia, Pennsylvania.

THE PENNSYLVANIA ACADEMY OF THE FINE ARTS

BROAD AND CHERRY STREETS, PHILADELPHIA, PA.

THE OLDEST FINE ARTS SCHOOL IN AMERICA : 1806

DRAWING : PAINTING : SCULPTURE : ILLUSTRATION : MURAL DECORATION

WINTER SCHOOL CIRCULAR : 1941-1942

OFFICERS

President
ALFRED G. B. STEEL

Treasurer
HENRY C. GIBSON

Directors
JOSEPH E. WIDENER
HENRY S. DRINKER, Jr.
HENRY C. GIBSON
MARSHALL S. MORGAN
JOHN F. LEWIS, Jr.
SYDNEY E. MARTIN
EDWIN O. LEWIS
WILLIAM CLARKE MASON
JOHN B. THAYER
WILLIAM VAN ALEN
SYDNEY L. WRIGHT

Vice-President
HENRY S. DRINKER, Jr.

Secretary
JOSEPH T. FRASER, Jr.

Solicitor
MAURICE B. SAUL

Curator of Schools
HENRY HOTZ, Jr.

Committee on Instruction
HENRY C. GIBSON, Chairman
JOHN F. LEWIS, Jr.
EDWIN O. LEWIS
JOHN B. THAYER
SIDNEY L. WRIGHT

MANAGEMENT

The schools are under the immediate care of the Curator and Committee on Instruction appointed by the President and Board of Directors, together with a Faculty composed of celebrated Artists, who are experienced Teachers and eminently qualified to discover and develop every talent which students may possess.

HISTORY

The Pennsylvania Academy of the Fine Arts is the oldest art institution in the United States and actually dates its existence from 1791, when Charles Willson Peale commenced his efforts to organize in Philadelphia a school for the fine arts. It was formally founded in 1805, and chartered in 1806. Mr. Peale's first efforts resulted in the formation in 1794 of the Columbianum, and in 1795 under the auspices of that Association there was held in Pennsylvania's old State House, now known as Independence Hall, the first exhibition of paintings in Philadelphia. The Columbianum was ultimately succeeded by the present Academy. In 1805, in Independence Hall, where twenty-nine years earlier the forefathers had signed the Declaration of Independence, seventy-one public spirited citizens, of whom forty-one were lawyers, met for formal organization. They prepared a petition for the incorporation of the Pennsylvania Academy of the Fine Arts. The gathering was a distinguished one, and included George Clymer, a signer of the Declaration of Independence; Joseph Hopkinson, the author of "Hail Columbia"; William Tilghman, President of the Court of Common Pleas, and afterwards Chief Justice of Pennsylvania; Charles Willson Peale, William Rush and Rembrandt Peale, artists; Alexander J. Dallas, District Attorney of the United States; Joseph B. McKean, Attorney General of the Commonwealth; William Lewis, William M. Meredith, William Rawle, Horace Binney, Simon Gratz, John Reynell Coates, Richard Rush, Charles Biddle, John Redman Coxe and Edward Penington. The object of the association, quaintly and vigorously expressed in the language of the day, was:

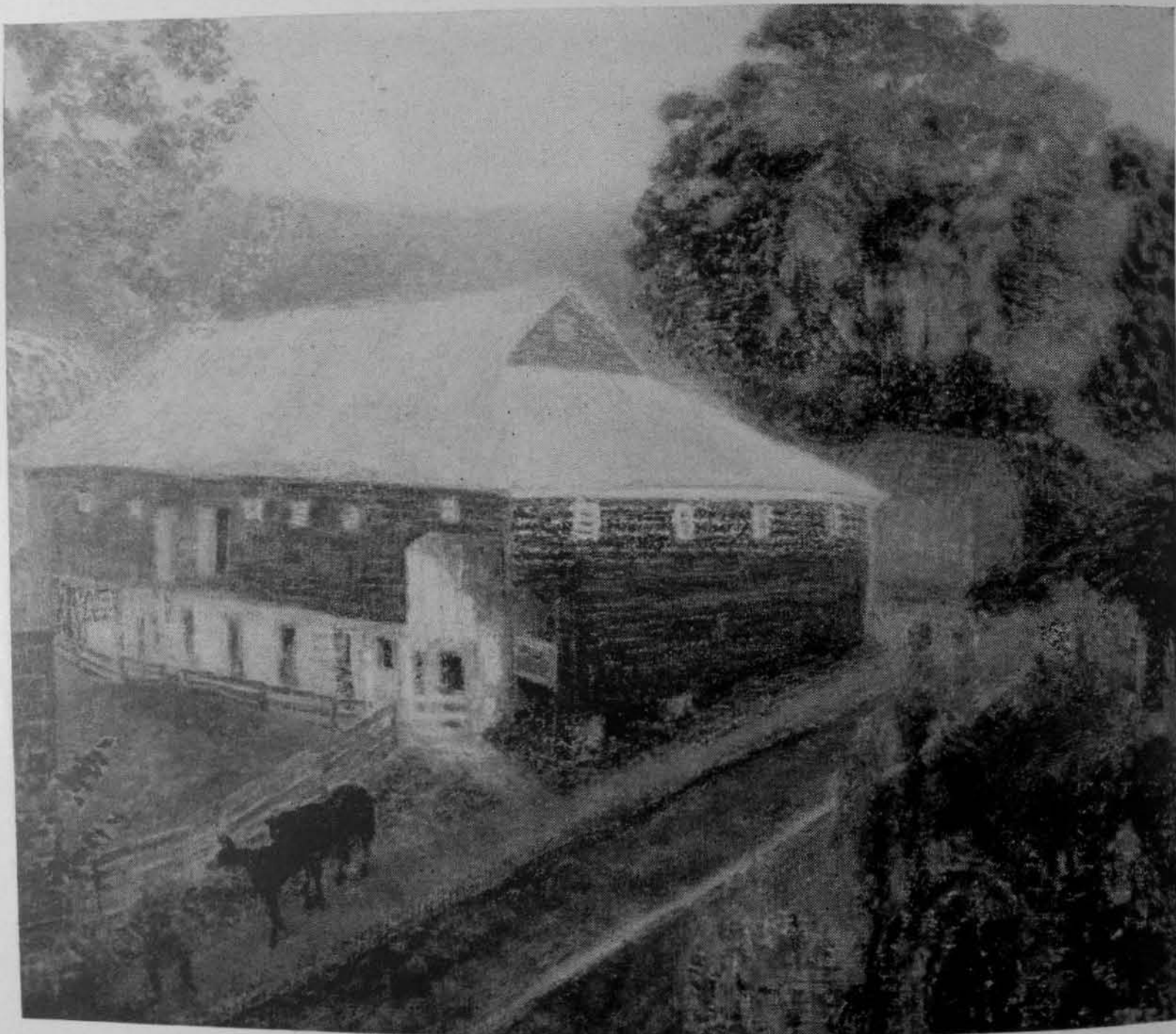
"To promote the cultivation of the Fine Arts, in the United States of America, by introducing correct and elegant copies from works of the first Masters in Sculpture and Painting, and by thus facilitating the access to such Standards, and also by occasionally conferring moderate but honourable premiums, and otherwise assisting the Studies and exciting the efforts of the Artists gradually to unfold, enlighten, and invigorate the talents of our Countrymen."

FACULTY

HENRY McCARTER

Born in Norristown, Pa., July 5, 1866. Studied in the Pennsylvania Academy of the Fine Arts, Philadelphia; Pupil of Puvis de Chavannes, Bonnat and Alexander Harrison, Toulouse Lautrec, M. Roll, M. Rixens, in Paris. Member Fellowship Pennsylvania Academy of the Fine Arts, Former Instructor Arts Students League of New York. Awards: Bronze Medal, Pan-American Exhibition, Buffalo, 1901; Silver Medal, St. Louis Exhibition, 1904; Beck Prize, Philadelphia Water Color Exhibition, 1906; Gold Medal for Illustrations, Second Gold Medal for Decoration and Color, Panama-Pacific Exhibition, San Francisco, 1915; Philadelphia First Award, Philadelphia Art Week, 1925; Joseph Pennell Gold Medal, 1930; Gold Medal, Art Club of Philadelphia, 1936; Temple Medal, 1939. Fellowship Pennsylvania Academy of the Fine Arts Gold Medal, 1941. Instructor in Understanding of Art and of Modern Painting.

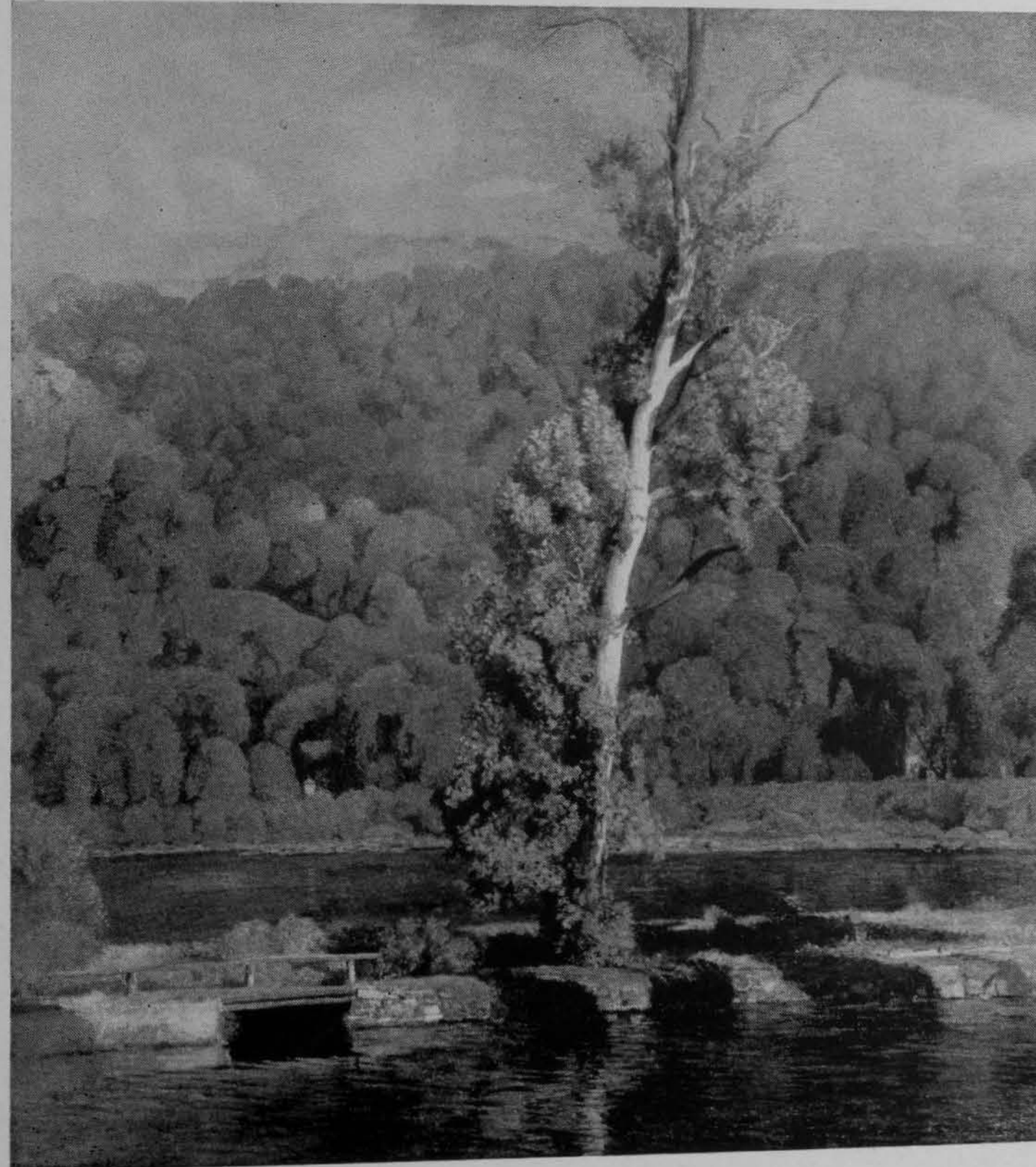
EVENING; PIGEON HILLS FARM



DANIEL GARBER

Born in North Manchester, Indiana, in 1880. Studied in the Art Academy of Cincinnati, and in The Pennsylvania Academy of the Fine Arts. Awarded: First Hallgarten Prize, National Academy of Design, 1909; Honorable Mention, Carnegie Institute, 1910; 4th W. A. Clarke Prize and Honorable Mention, Corcoran Gallery of Art, Washington, D. C., 1910; Honorable Mention, Art Club of Philadelphia, 1910; Bronze Medal, International Exposition, Buenos Aires, 1910; Walter Lippincott Prize, The Pennsylvania Academy of the Fine Arts, 1911; Potter Palmer Gold Medal, Art Institute of Chicago, 1911; 2nd W. A. Clarke Prize and Silver Medal, Corcoran Gallery of Art, Washington, D. C., 1912; 2nd Altman Prize for Figure Painting, National Academy of Design, New York City, 1915; Gold Medal, Panama-Pacific International Exposition, National Francisco, 1915; Shaw Prize, Salmagundi Club, New York City, 1916; Harrison S. Morris Prize, Newport, Rhode Island, 1916; 1st Altman Prize for Figure Painting, National Academy of Design, New York City, 1917; Edward T. Stotesbury Prize, The Pennsylvania Academy of the Fine Arts, 1918; Temple Gold Medal, Gallery of Art, Washington, D. C., 1921; First Altman Prize for Landscape, National Academy of Design, New York City, 1922; Gold Medal, Art Club of Philadelphia, 1923; Carnegie Prize, National Academy of Design, New York City, 1923; Third Prize, Carnegie Institute, International, 1925; The Academy Gold Medal of Honor, The Pennsylvania Academy of the Fine Arts, 1929; The Jennie Sesnan Gold Medal, The Pennsylvania Academy of the Fine Arts, 1937. Member: National Academy of Design, New York City; National Arts Club, New York City; Salmagundi Club, New York City. Instructor in Drawing and Preliminary and Advanced Life Painting.

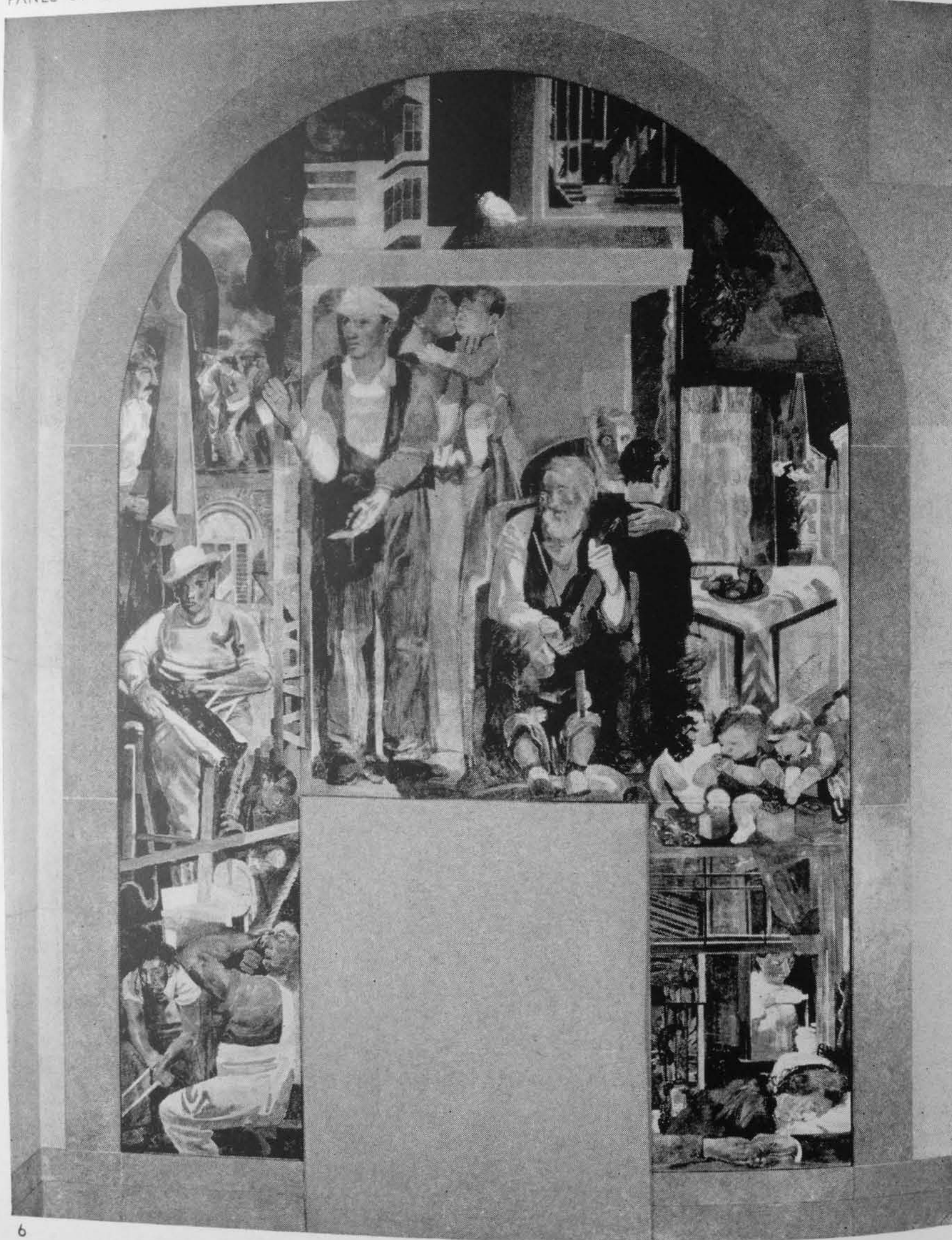
LONE SYCAMORE



GEORGE HARDING

Born in Philadelphia; studied in The Pennsylvania Academy of the Fine Arts, with Howard Pyle and independently abroad. Illustrator and author of descriptive articles and fictional work in Harpers and other magazines. Travelled extensively in the North, Australia, New Guinea and Asia. Commissioned Captain of Engineers and assigned as artist with the American Expeditionary Forces in 1918-1919. Mural Decorations in banks, hotels, hospitals, U. S. Customs House Port of Philadelphia, North Philadelphia Post Office, U. S. Post Office Building, Washington, D. C., Federal Building World's Fair, Edward T. Stotesbury Prize, Pennsylvania Academy of the Fine Arts. Member: National Academy of Design. Instructor in Illustration and Mural Decoration.

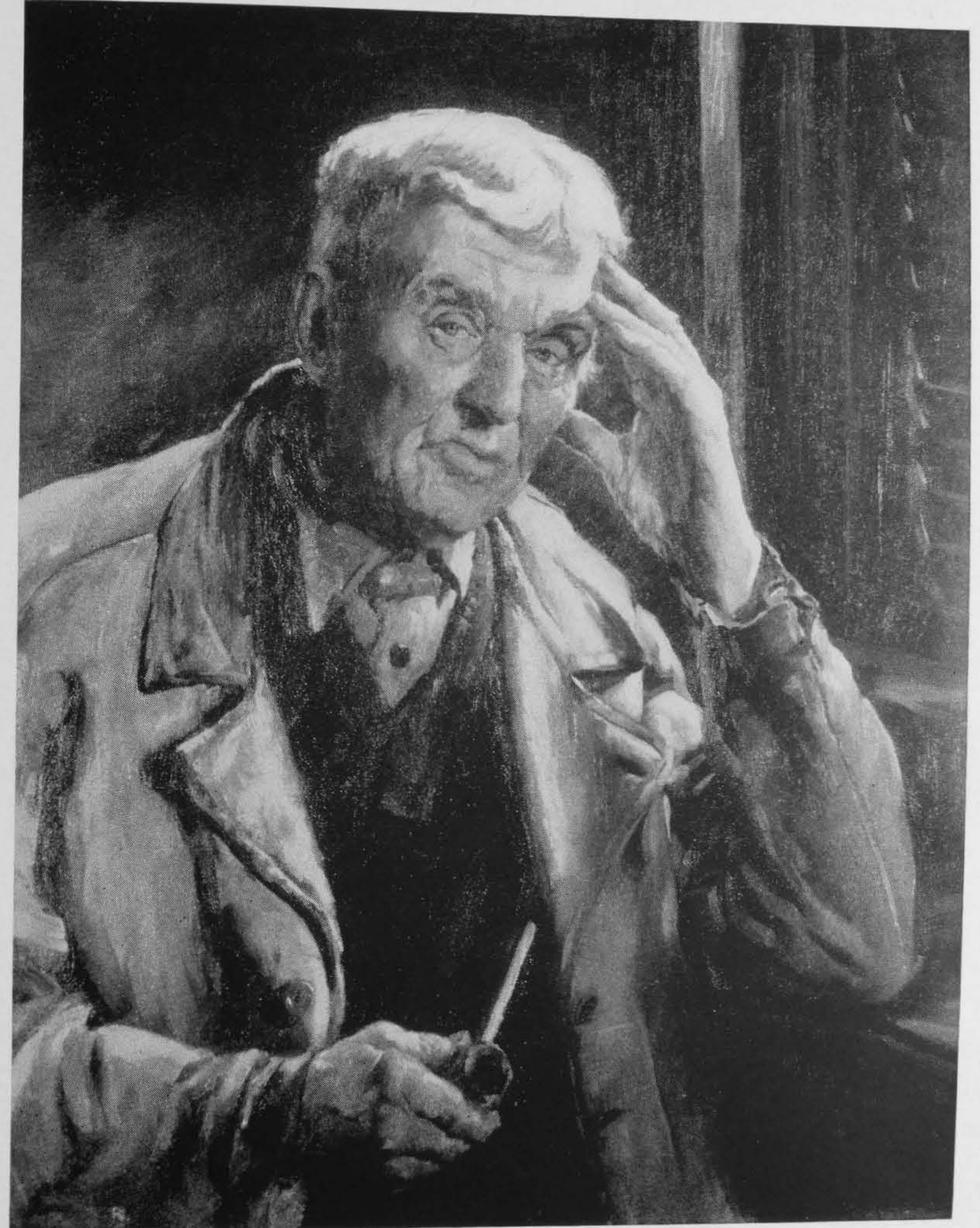
PANEL OF MUNICIPAL COURT; PHILADELPHIA



ROY C. NUSE

Born in Springfield, Ohio, February 23, 1885. Pupil of Duveneck, Cincinnati Art Academy, Pennsylvania Academy of the Fine Arts. Awards: Cresson European Scholarship, Pennsylvania Academy of the Fine Arts, 1917; Second Cresson, First Toppan and First Thouron Prizes, Pennsylvania Academy of the Fine Arts, 1918; Medal, Philadelphia Sketch Club, 1921. Past President of the Fellowship of Pennsylvania Academy of the Fine Arts. Instructor in Drawing and Preliminary Portrait Painting and Head of the Coordinated Course of the Academy of the Fine Arts with the University of Pennsylvania.

MAN OF THE VALLEY



FRANCIS SPEIGHT

Born in Windsor, North Carolina, 1896. Studied in the Corcoran School of Art, Washington, D. C., and The Pennsylvania Academy of the Fine Arts. Awards: Foreign Traveling Scholarship, The Pennsylvania Academy of the Fine Arts, 1923; Cresson Traveling Scholarships, 1923 and 1925, The Pennsylvania Academy of the Fine Arts; Second Traveling Foreign Scholarship, The Pennsylvania Academy of the Fine Arts, 1925; The Fellowship of the Pennsylvania Academy of the Fine Arts' Gold Medal, 1926; First Prize in 1925; The Fellowship of the Pennsylvania Academy of the Fine Arts, 1929; The Fellowship of The Pennsylvania Academy of the Fine Arts, 1930; First Hallgarten Prize, National Academy of Design, 1930; M. V. Kohnstamm Prize, The Art Institute of Chicago, 1930; Landscape Prize, Connecticut Academy of Fine Arts, 1932; Third W. A. Clarke Prize and Bronze Medal, Corcoran Gallery of Art, Washington, D. C., 1937; Gold Medal, Philadelphia Sketch Club, 1938; The Jennie Sesnan Gold Medal, The Pennsylvania Academy of the Fine Arts, 1940; The Academy Fellowship Prize, 1940. Member: National Academy of Design, New York City. Instructor in Drawing and Painting.

GRADING PLAYGROUND



WALKER HANCOCK

Born in St. Louis, 1901. Studied in the St. Louis School of Fine Arts and The Pennsylvania Academy of the Fine Arts. Awards: Second Prize, St. Louis Art League Competition, 1916; Edmund Stewardson Prize, Pennsylvania Academy of the Fine Arts, 1921; Emlen Cresson Foreign Traveling Scholarship, 1922 and 1923; Widener Memorial Gold Medal, Pennsylvania Academy of the Fine Arts, 1925; Fellowship Prize, 1932; Helen Foster Barnett Prize, National Academy of Design, 1935. Awarded Fellowship in the American Academy in Rome, 1925. Member: Architectural League of New York. The Fellowship of The Pennsylvania Academy of the Fine Arts; National Sculpture Society; National Academy of Design; National Institute of Arts and Letters. Instructor in Sculpture.

1941 MEDAL FOR THE SOCIETY OF MEDALLISTS



JAMES CHAPIN

Born in West Orange, New Jersey. Studied at Cooper Union, New York, Art Students League, New York, and Royal Academy of Antwerp, Belgium. Awards: First prize for drawing, Antwerp Royal Academy, 1912; Logan prize for portraiture, Chicago Art Institute, 1927; Temple Gold Medal, The Pennsylvania Academy of the Fine Arts, 1928. Instructor in Advanced Portrait and Advanced Composition.

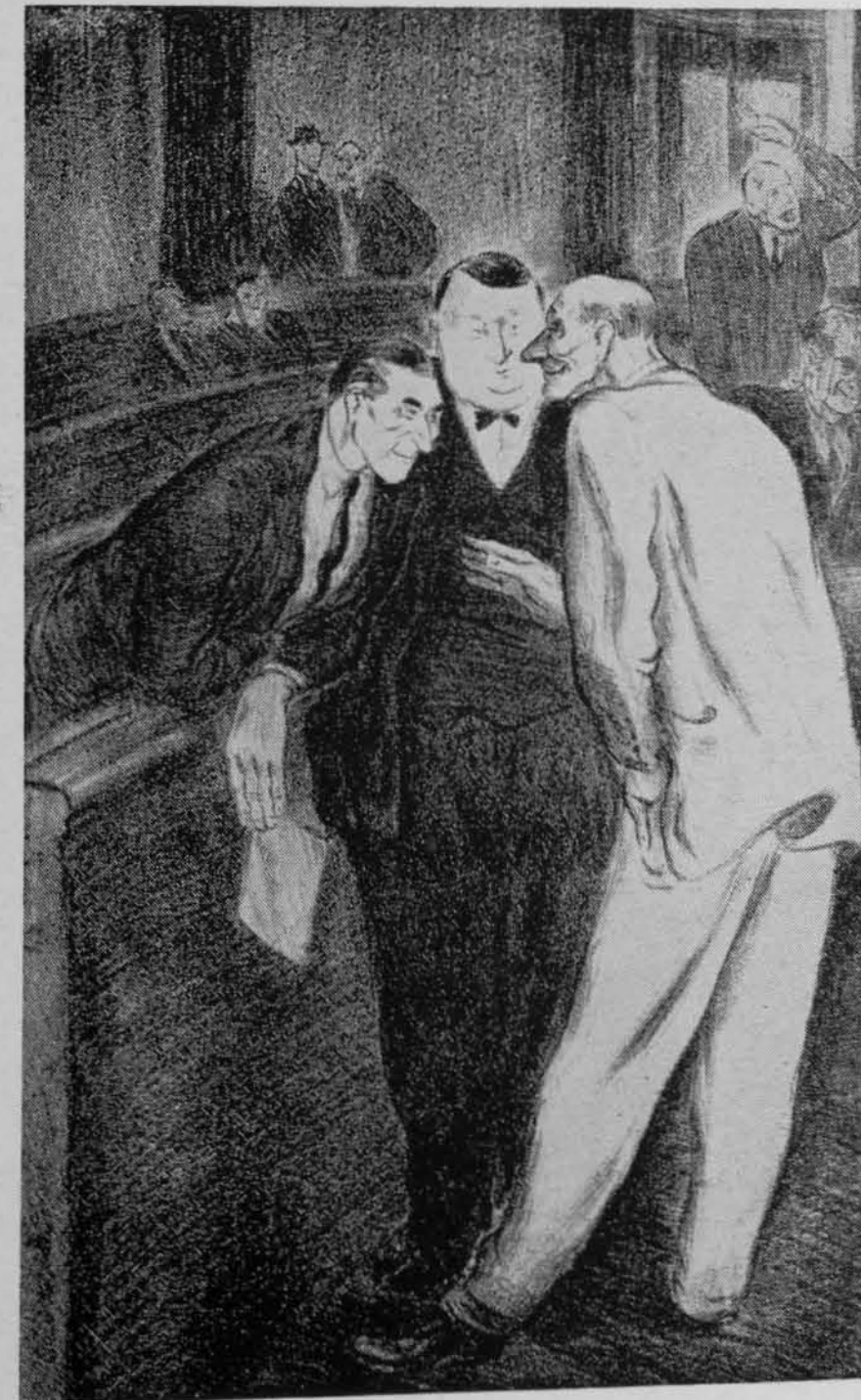
WOMAN IN YELLOW WAIST



GEORGE E. C. WIGGINS

Born in Little Rock, Arkansas, May 15, 1907. Illustrator and lithographer. Studied in the Corcoran Art School in Washington, D. C., and at The Pennsylvania Academy of the Fine Arts. Awarded the William Emlen Cresson Foreign Traveling Scholarships in 1931 and 1932. Contributor through N. W. Ayer & Son, Lord & Thomas, Young & Rubicam to Delineator, Pictorial Review, McCall's, Life, and New Yorker. Assistant to Mr. Harding in Illustration.

THE CONFERENCE



ROSWELL WEIDNER

INSTRUCTOR IN DRAWING & LITHOGRAPHY

Born in Reading, Pa., 1911. Studied at The Pennsylvania Academy of the Fine Arts and The Barnes Foundation. Awarded The William Emlen Cresson Foreign Traveling Scholarship, 1935; First Charles Toppan Memorial Prize, 1936; Honorable Mention Philadelphia Sketch Club, 1936. Instructor in Still Life Painting.

STILL LIFE



HARRY ROSIN

Born in Philadelphia, December 21, 1897. Studied in The Pennsylvania Academy of the Fine Arts and in Paris. Awarded: Stewardson Prize for Sculpture; Cresson Travelling Scholarship, 1926; Widener Gold Medal, 1939; P. A. Fellowship Prize, 1941. Represented: by work for the French Government on the island of Guadeloupe, French West Indies; a building in Papeete, Tahiti, South Seas; The Samuels Memorial, Schuylkill River, Philadelphia; Private and Public Collections in London, Paris, Tahiti, New York and Philadelphia. Instructor in Construction.

HINA RAPA



AUGMENTING THE FACULTY

HENRY C. GIBSON

Chairman ex-officio, as Chairman of the Committee on Instruction of the Board of Directors.

JOHN F. HARBESON, B.S., M.S.A., R.A.

Born in Philadelphia, July 30, 1888. Studied in the University of Pennsylvania. Received B.S. 1910, and Arthur Spayd Brooke Gold Medal in Design, 1910; M.S.A., 1911; Cope Prize (Philadelphia Chapter A. I. A. and T Square Club), 1913. Architect, Associate of Paul P. Cret. Member American Institute of Architects, Assistant Professor in Architectural Design, School of Fine Arts, University of Pennsylvania; Author of "The Study of Architectural Design," Pencil Points Press, N. Y., 1926; Instructor in Perspective and Architectural Adviser in the Sculpture Class in Composition.

GEORGE DEMETRIOS

Born in Greece, April 1, 1896. Pupil of Charles Grafly and Antoine Bourdelle. Member: Boston Sculpture Independent Association. Director, Demetrios School, Boston. Instructor in Drawing in the Sculpture Class.

WILLIAM M. CAMPBELL, B.S., R.A.

Born in Germantown, Philadelphia, 1887; studied in the University of Pennsylvania. B.S. in Arts, 1912. B.S. in Arts; R.A. Instructor in Elements of Architecture in the School of Fine Arts, University of Pennsylvania. Assistant Instructor in Perspective.

PHILIP ALIANO

Born in Corleto Perticara, Italy. Studied drawing and modeling at The Spring Garden Institute and modeling at Drexel Institute. Received Honorable Mentions.

Foreman in charge of stone, marble and granite for different studios; also stone yard. Chairman of the Architectural Sculptors and Carvers Association of Philadelphia and Vicinity. Instructor in Stone Cutting.

EDMOND J. FARRIS, B.A., Ph.D.

Born in Buffalo, New York. Associate in Anatomy, In Charge of Operations of The Wistar Institute of Anatomy and Biology. Author, "Art Students' Anatomy" (Lippincott), "Anatomy and Physiology, Laboratory Guide" (Lippincott). Instructor in Anatomy.

GEORGE SIMPSON KOYL, M.S. in Arch.

Dean of the School of Fine Arts of the University of Pennsylvania representing the University in the Coordinated Course.

SPECIAL LECTURES

A special group of lectures will be arranged throughout the entire winter session covering topics of broad interest.

The lecturers are each specialists upon their separate topics and the following is a partial list of the subjects as planned: the craftsmanship and technique and the chemistry and physics of fine arts painting; slow motion pictures of the life figure in action; exhibition of contemporary illustrations and talks by outside artists; a short history of architecture with slides; cartooning art. Additional topics may be duly announced.

This series of lectures will endeavor to introduce the student to a few of the many avenues of activity with which he must cope when the period of his school study is past.

GENERAL AND SPECIFIC ADVANTAGES

THE Faculty constitutes the greatest single asset of the Academy's Schools. Many other factors, however, contribute to the strength of the present institution. Its strategic location, Galleries, Library and Print Collection, the Coordinated Course with the University of Pennsylvania, the American Academy in Rome Collaborative problem and the many scholarship advantages will be briefly outlined below. (See "Scholarships and Prizes" for details under that head.)

LOCATION. The Academy building is located in the heart of Philadelphia within one block of City Hall and within two or three blocks of the central city railroad stations. It is within walking distance of practically every gallery, museum, library, theatre and music hall of importance in the city. Considering Philadelphia's wealth in these cultural attributes, the student in the Academy has immeasurable opportunities of augmenting his or her school work in every possible field of inspiration for art and living.

ACADEMY GALLERIES. The Academy's Permanent Collection of Paintings and Sculpture affords an opportunity for the study of examples of famous masters, and includes the Gallery of National Portraiture by Early American Painters; the Temple Collection of Modern American Paintings; The Gibson Collection, largely composed of works of the Continental schools; and the Lambert Collection of Contemporary Art.

The Annual Exhibitions held by the Academy, of which this year's will be the One Hundred and Thirty-seventh, bring together the best examples of current American painting and sculpture, and enable students to follow intelligently the various movements of contemporary art, and to study the technical methods by which the art of today is achieving its results. These exhibitions have been recognized for many years as being the foremost in America.

The Water Color Exhibition, the Exhibition of Modern Miniatures, and the Chester Springs Summer School Exhibition are held in the Fall of each year. The exhibition of work of students submitted in competition for Cresson European Travelling Scholarships and other prizes is held at the end of May. Other special exhibitions continually change the aspect of the Galleries throughout the Winter season.

A student ticket entitles the holder, during attendance at the Academy, to free admission to the Galleries, Special Exhibitions, Lectures, and to the use of the Library and Print Collection.

LIBRARY. An excellent reference library is available to all registered students at specified times. A valuable extension of this library exists in a splendid collection of books, easy of access to the students, which may be taken to the class rooms for intimate study in connection with the class room work.

PRINT COLLECTION. The Academy is the owner of one of the largest and most valuable print collections in the United States, with a total aggregate in all collections of 61,811 prints.

COORDINATED COURSE. The University of Pennsylvania offers its degrees of Bachelor and Master of Fine Arts to students of Painting, Sculpture, Mural Decoration, or Illustration, who have completed a course of academic study in the University and prescribed technical work in the Schools of The Pennsylvania Academy of the Fine Arts.

The minimum time spent in the Coordinated Course by any student, not counting those with advance credit, is five years, during which time fifty-eight (58) semester credits must be completed in required academic courses at the University and technical work throughout that complete period at the Academy.

CREDITS TOWARD BACHELOR DEGREE		CREDITS TOWARD MASTER DEGREE	
	Semester Credits		Semester Credits
I. Prescribed Work, 51 Semester Credits		Academy (Technical)	36
(a) History of Art	12	University: History of Painting	4
(b) English	12	Electives	8
(c) Modern Language	6		
(d) General History	6	Total Semester Credits	48
(e) A Science	6		
(f) Psychology	6		
(g) Aesthetics	3		
II. Elective Subjects	7		
Total Semester Credits	58		

Advanced standing for academic work up to 22 semester credits may be allowed by the University. For previous technical study of the Fine Arts the Academy may allow credit up to two full years. (This does not apply to the terms of the Cresson Competition.)

The technical work of the student is judged each term by the Committee on the Coordinated Courses. Reports are rendered each term. In the academic courses the standing is reported each term by the University.

The students in these courses share all privileges extended to the student-body of each institution and are also subject to the regulations imposed.

Candidates for admission to the Coordinated Courses must meet the requirements of each institution. Application blanks will be sent upon request.

INSTRUCTION

The general method of instruction is by individual criticism of class work, without the repressing effect of fixed methods. The purpose of this training is to develop the students' natural abilities, to enable them to acquire technique, and to stimulate their sense of beauty. The various classifications of study are closely allied and students in one department are privileged to work in the other departments by arrangement with the Curator. This entails no additional fee

ATTENDANCE. There is no compulsory attendance in any class or classes of the Academy school, but every day student is afforded the fullest possible opportunity to actively participate in a schedule which can completely fill six or seven day hours six days of every school week plus three additional evening hours on five of those days.

SCHEDULE OF CLASSES. All new students, except those who enter the Sculpture Classes, are required to work on trial in either the Antique Cast Head or Antique Cast Figure drawing classes. Students who present evidence of work accomplished in accredited art schools may, upon consultation with the curator, be admitted into more advanced classes immediately.

DRAWING. These classes are maintained primarily to provide a ground work in drawing which may be developed later in the Painting and Illustration Classes. Working in monochrome (generally black and white) from the plaster cast, both head and figure with unchanging light, provides the beginner that opportunity to grasp the problems of light and shade toward the expression of form more easily than by work from living models.

First Antique Classes,

Antique Cast (Head)	Francis Speight
Construction (Life Model Proportions)	Roy C. Nuse
	Harry Rosin
Sketch (Costumed Model)	Roy C. Nuse

Second Antique Classes,

Antique cast (Figure)	Daniel Garber
	Francis Speight
	Roy C. Nuse
Construction	Harry Rosin
	Roy C. Nuse
Sketch (Costumed Model)	Henry McCarter
Understanding of Art	Roswell Weidner
Still Life	



PAINTING. The painting classes are planned to assist each student, upon a sound knowledge of drawing as a base, to a personal expression through color; the whole built upon compositional understanding and sound technical facility.

Preliminary Classes,

Life	Daniel Garber
Portrait	Roy C. Nuse
Still Life	Roswell Weidner
Composition	James Chapin
Costumed Sketch and Croquis	Roy C. Nuse
Construction	Harry Rosin
Understanding of Art	Henry McCarter
Perspective	John Harbeson
Anatomy	Dr. Edmond J. Farris

Advanced Classes,

Advanced Life	Daniel Garber
Advanced Portrait	James Chapin
Advanced Composition	James Chapin
Costumed Sketch and Croquis	Roy C. Nuse
Construction	Harry Rosin
Understanding of Art	Henry McCarter
Landscape	Francis Speight

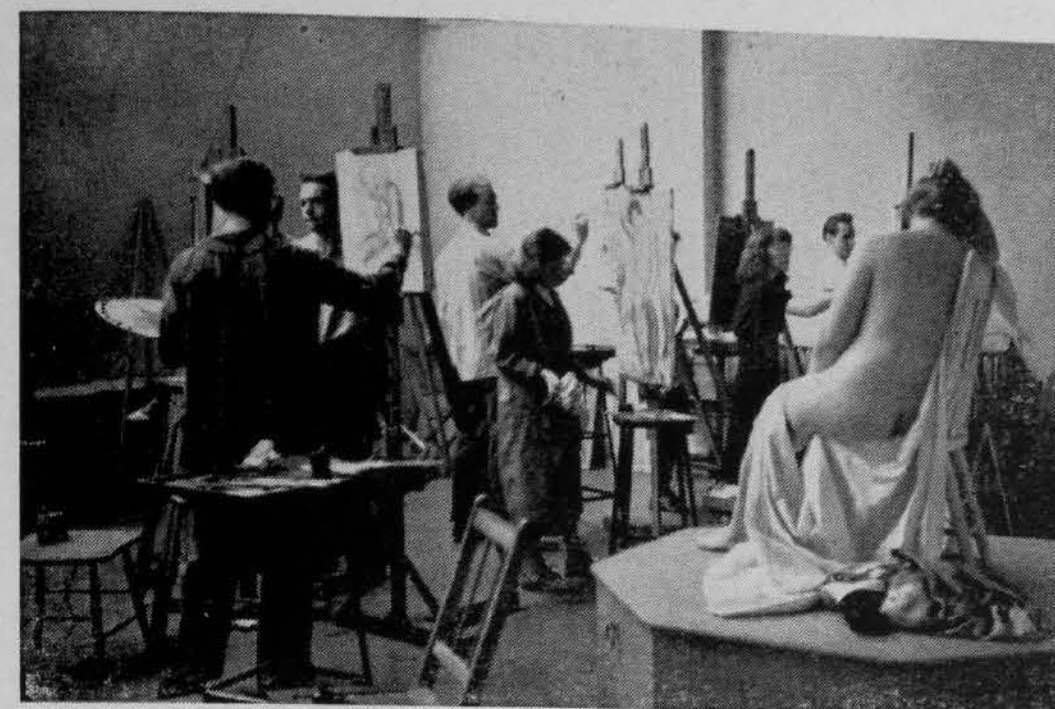
ILLUSTRATION. The purpose of the Illustration classes is to provide the student with such practical instruction in Drawing, Composition, and Interpretation as will enable him to enter the professional field of magazine and book illustrating.

Preliminary Classes,

Illustration Composition	George Harding
Life	Francis Speight and Daniel Garber
Costumed Model	George E. C. Wiggins
Costumed Sketch and Croquis	Roy C. Nuse
Construction	Harry Rosin
Understanding of Art	Henry McCarter
Perspective	John Harbeson
Anatomy	Dr. Edmond J. Farris

Advanced Classes,

Advanced Composition and Professional Practice	George Harding
--	----------------



MURAL DECORATION. The chief purpose of this class is to train advanced students in solving the architectural problems of decoration based upon a sound compositional knowledge, and appreciation

of scale. The actual mechanics which this branch of the Fine Arts involves are thoroughly studied so that the various painting techniques employed in the mural expression may be understood and acquired.

Mural Composition and Technical Research	George Harding
Life	Daniel Garber
Costumed Sketch and Croquis	Roy C. Nuse
Construction	Harry Rosin
Understanding of Art	Henry McCarter

SCULPTURE. This department introduces its students to and trains technically in modelling and its application. Special emphasis is placed upon Sculpture as allied to its sister arts, Painting and Architecture.

Life	Walker Hancock
Head	Walker Hancock
Composition	Walker Hancock
Stone Cutting	Philip Aliano
Perspective	John Harbeson
Croquis (Sketching from Life, Action Poses)	George Demetrios
Construction	Harry Rosin
Anatomy	Dr. Edmond J. Farris
Casting and Technical Mechanics	Peter Suffredini

EVENING CLASSES. The evening classes are planned for those students whose activities or livelihood do not permit them to attend the day session. Students admitted under this head are not eligible to compete for prizes or scholarships. The fees are set at a reasonable figure so that many may enjoy the privilege of Drawing, Painting, or Modelling in the life classes. See "Fees" for details. All day students are entitled to work in the evening classes without extra fee.

Drawing and Etching	Daniel Garber
Painting	
Life	Daniel Garber
Costumed Sketch	Francis Speight

The life model poses five evenings every week and the Costumed Sketch model every Wednesday evening.

Sculpture	
Life	Walker Hancock
Head	Walker Hancock

Life models pose on Tuesday and Thursday evenings. Head models pose Tuesday, Wednesday, and Thursday evenings. The Life and Head models alternate on a two-week schedule.

PART TIME CLASSES. A courtesy part time registration without prize or scholarship eligibility is offered to former students at greatly reduced rates to aid them with instruction, the invaluable continued use of models, and to concretely express the genuine interest the Academy has in all those who have studied here. (See Rates.)

REGISTRATION OF WORK. Each student is required to register one example of work, once each month, representing effort in each of the classes listed under

the department in which he or she is enrolled. For example: the student in Preliminary Painting registers one Life, Head, Construction, Costumed Sketch, Composition and Still Life per month. The exceptions and special classes are listed below. The same work cannot be registered more than once. An unbroken record of registration is necessary for eligibility for competitions, and is required of all students in the Coordinated Course. Written requests for excuse upon legitimate grounds (illness, unavoidable absence, etc.) must be addressed to the Curator for approval.

Attendance upon the classes on Understanding of Art and Composition is not compulsory but students are particularly



urged to attend all through their Academy experience. Composition studies and finished work will be registered according to posted regulations.

Perspective drawing is a two-term (one-winter) course and is compulsory of satisfactory completion before any student may compete for a Cresson Traveling Scholarship, or receive the award of a Collaborative Scholarship, and also upon all students taking the Coordinated Course with the University of Pennsylvania.

Every student is urged to get credit for this course in his first or second year. Anatomy lectures are not compulsory but every student is advised to attend regularly for at least two terms (one winter).

PROMOTION. Application for promotion from the First Antique Cast Drawing section to the Second Antique Cast Drawing section and subsequently into Painting or Illustration may be made at any stated meeting of the Faculty. A group of Drawings or Paintings, one each from all branches of classes attended, is placed for judgment with the application. Each work submitted must have the approval of the Instructor of the class in which it is made. If the Faculty finds the group of insufficient merit to warrant promotion the student may submit another group to the Faculty at any subsequent meeting. Admission to the Advanced Head and Advanced Life Painting classes is also by action of the Faculty upon the submission of one head or life painting (respectively) accompanied by a line drawing made from the life model as posed in the class. The work submitted needs no approval. *by the instructor*

Admission to Mural Decoration is arranged by conference with Mr. George Harding and the Curator.

All students in the Sculpture classes begin, upon entrance and regardless of what previous experience they have had, in the regular head and life classes. Their entrance into the broader activities of the Sculpture department is arranged by conference with Mr. Walker Hancock and the Curator.



1940



CRESSON SCHOLAR IN ILLUSTRATION 1940
HONORABLE MENTION CRESSON COMPETITION 1941
FIRST TOPPAN PRIZE 1941

JOHN KOOMAR

HONOR ROLL

1941

Awards of May, 1941

CRESSON TRAVELING SCHOLARSHIPS

PAINTERS

WALTON F. BATTERSHALL, Rockville Center, N. Y. CHARLES K. REDFERN, Toronto, Canada
R. MORRIS HERVEY, Wheeling, West Virginia JAMES M. WALDRON, Northampton, Mass.
JOHN H. WRIGHT, Philadelphia, Pa.

ILLUSTRATORS

RICHARD BALDWIN, Springfield, Pa. RICHARD LESSERAUX, Philadelphia, Pa.
JOHN M. KUNIK, Erie, Pa. JAMES C. McKELL, JR., Penfield, Pa.
HARRIET ROSE, Wadesboro, N. C.

MURAL DECORATORS

JEAN CRAIG, Philadelphia, Pa.

SCULPTORS

ROBERT C. SPURGEON, Wildwood, N. J. WILLIAM M. TALBOT, Creve Coeur, Mo.

THE CHARLES TOPPAN PRIZES

1st Prize

JOHN L. KOOMAR, Nesquehoning, Pa.

2nd Prize

HELEN S. SMITH, Philadelphia, Pa.

HONORABLE MENTION

MICHAEL FIORILLO, Philadelphia, Pa.

ALICE UHLMANN, Philadelphia, Pa.

THE THOURON PRIZES

FRANK K. WALLACE, Greensboro, Vermont
OLIVER GRIMLEY, Norristown, Pa.

PAUL LORE, Erie, Pa.
MADELEINE ROBERTSON, Philadelphia, Pa.

THE STEWARDSON PRIZE

ALICE C. FRAYER, Ann Arbor, Mich.

THE STIMSON PRIZE

ROBERT C. SPURGEON, Wildwood, N. J.

THE PACKARD PRIZES

CHARLES B. SEMSER, Philadelphia, Pa.

THERESA DI MARCO, Philadelphia, Pa.

THE RAMBORGER PRIZE

LEONARD KOCH, Fort Wayne, Ind.



WILLIAM H. M. TALBOT

AMERICAN ACADEMY IN ROME SCULPTURE PRIZE 1941

The American Academy in Rome since 1894 have offered each year Fellowships to American Architects, Painters, Sculptors, and Musicians for travel in Europe, and residence in Rome. Due to war conditions, the Competition this year was announced as offering a \$1000.00 cash prize in each of these divisions and with no stipulation as to the manner of its use.

The winner of this year in Sculpture, whose work is here represented, is a student in the Academy's Sculpture Department, William H. M. Talbot.



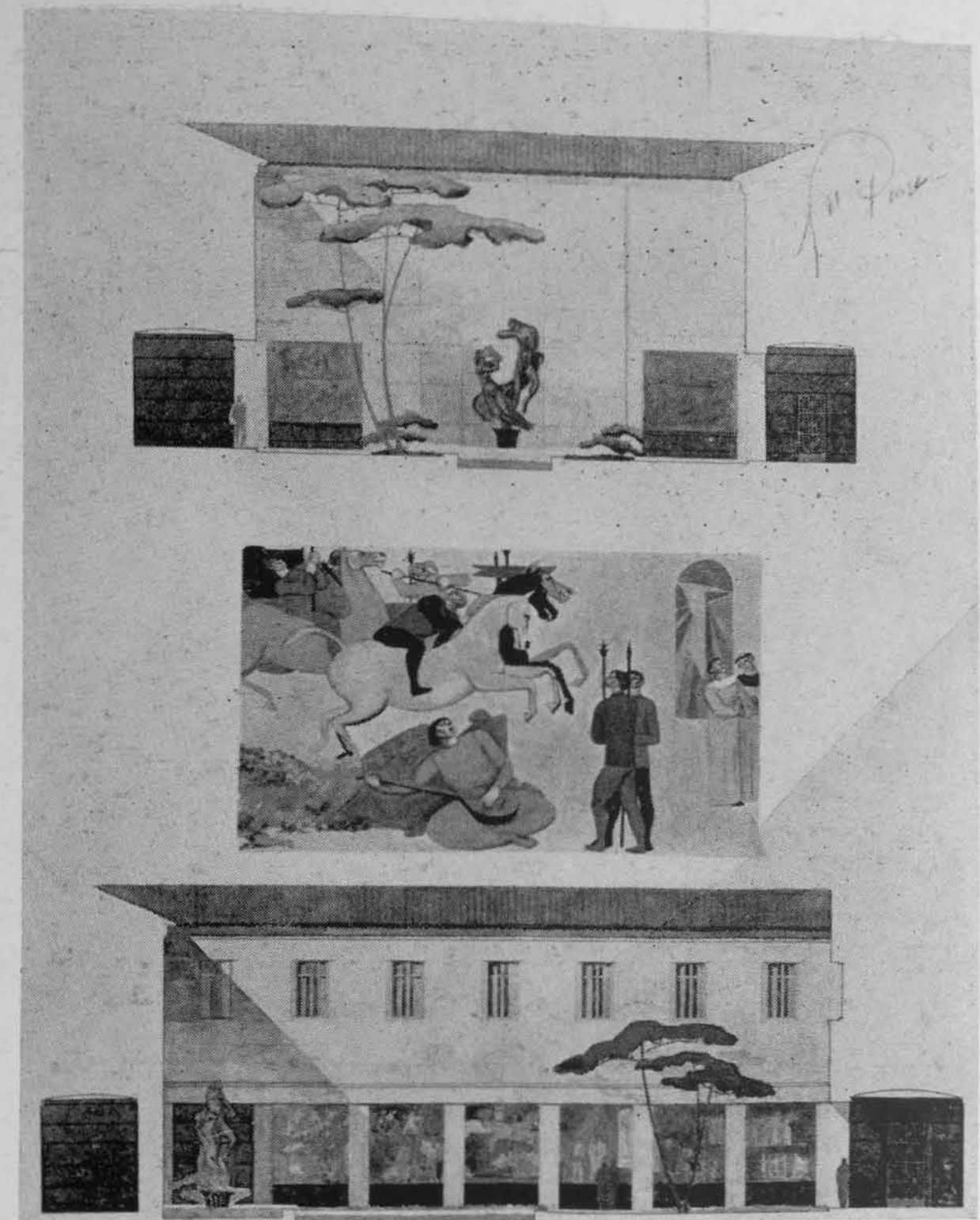
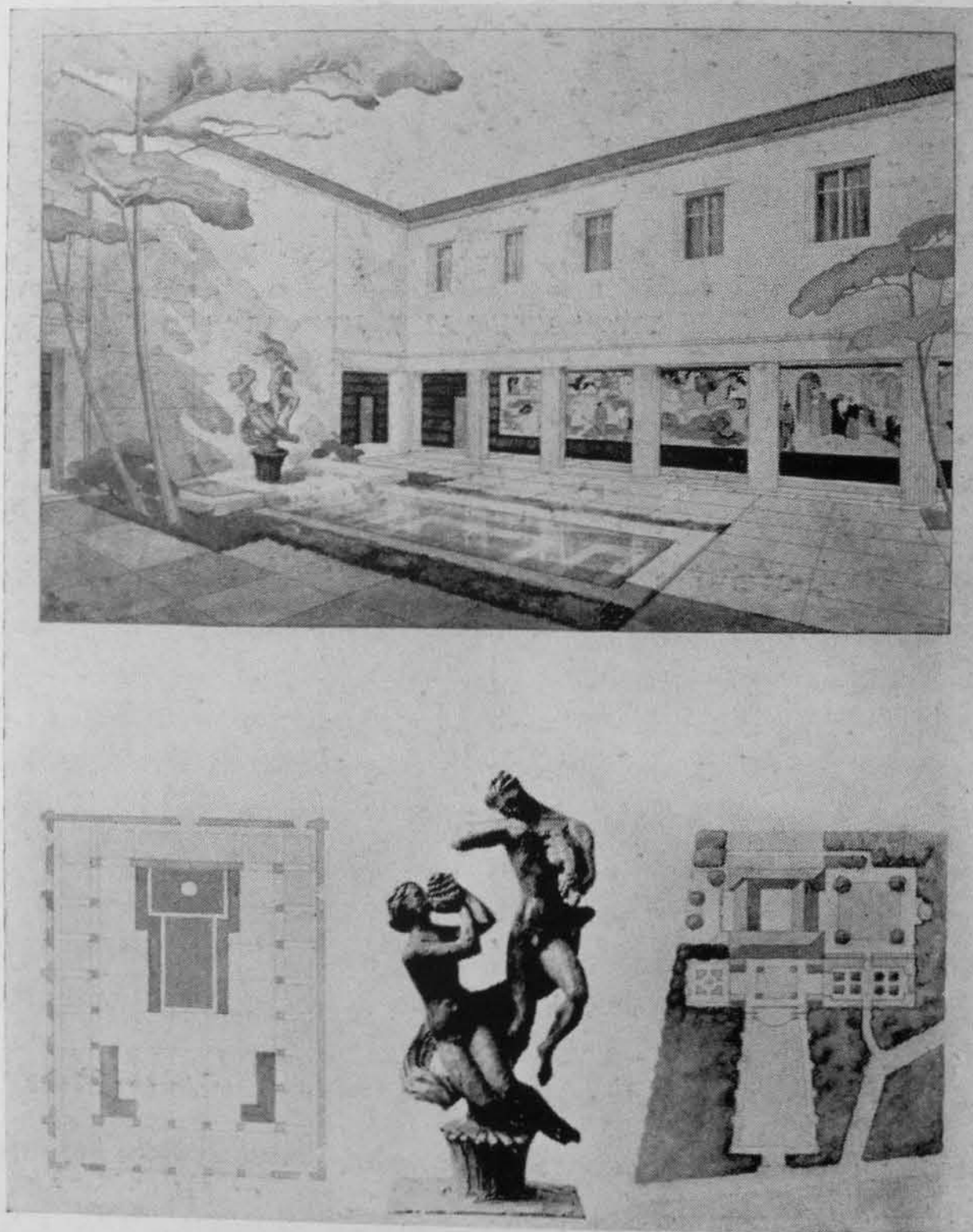
SIDNEY SIMON

EDWIN AUSTIN ABBEY SCHOLAR IN MURAL DECORATION 1940

The Edwin Austin Abbey Memorial Scholarships for Mural Painting were founded in 1926 by Mrs. Gertrude Abbey in memory of her illustrious husband. The Directors of the Association established to carry out the specific intentions of this Foundation consisting of Barry Faulkner, Gifford Beal, Arthur Covery, Harvey Wiley Corbett and Leon Kroll announced in the fall of 1940 the First Competition for this Abbey Prize for Mural Painting to be awarded November 15, 1940. The Prize consists of a stipend of \$1000.00 a year. The Scholarship is for a period of from one to three years at the discretion of the Directors of the Association and the studies will be carried on in this country and also abroad if conditions permit. If at the end of the second year the Council continues to be satisfied with the progress of the student, it may in its discretion extend the Scholarship for a third and final year. The sum of \$1500.00 will be set aside for expenses during the third year, and a part of this year, if conditions permit, will be occupied in study abroad, particularly in Italy.

The winner of this first Abbey competition, whose work is here represented, is a student in the Academy's Mural Department, Sidney Simon.

COLLABORATIVE PROBLEM. It is the aim of the Academy's Schools to approach the fine arts in the broadest sense. Toward that end and because of the ideal coordination with the University of Pennsylvania, through its School of Fine Arts, one of the most valuable features is the participation through and with the Association of the Alumni of the American Academy in Rome in their Collaborative Problem. This project engages students in architecture, landscape architecture, mural decoration and sculpture. Teams of four are formed, the latter two members from the Academy, in the study of these, the four great art departments, toward a perfect whole. The Academy deems the opportunities thus afforded so valuable that it offers tuition scholarship prizes to those students whose teams place in the prize winning groups in the Rome Academy's judgment. For particulars see Collaborative Prizes under "Prizes and Scholarships."



FIRST PRIZE COLLABORATIVE TEAM 1940-41 COMPETITION

SYLVIA BERNSTEIN, MURAL DECORATOR

RHODA BARNEY, ARCHITECT

ALEXANDER KRICHEFF, SCULPTOR



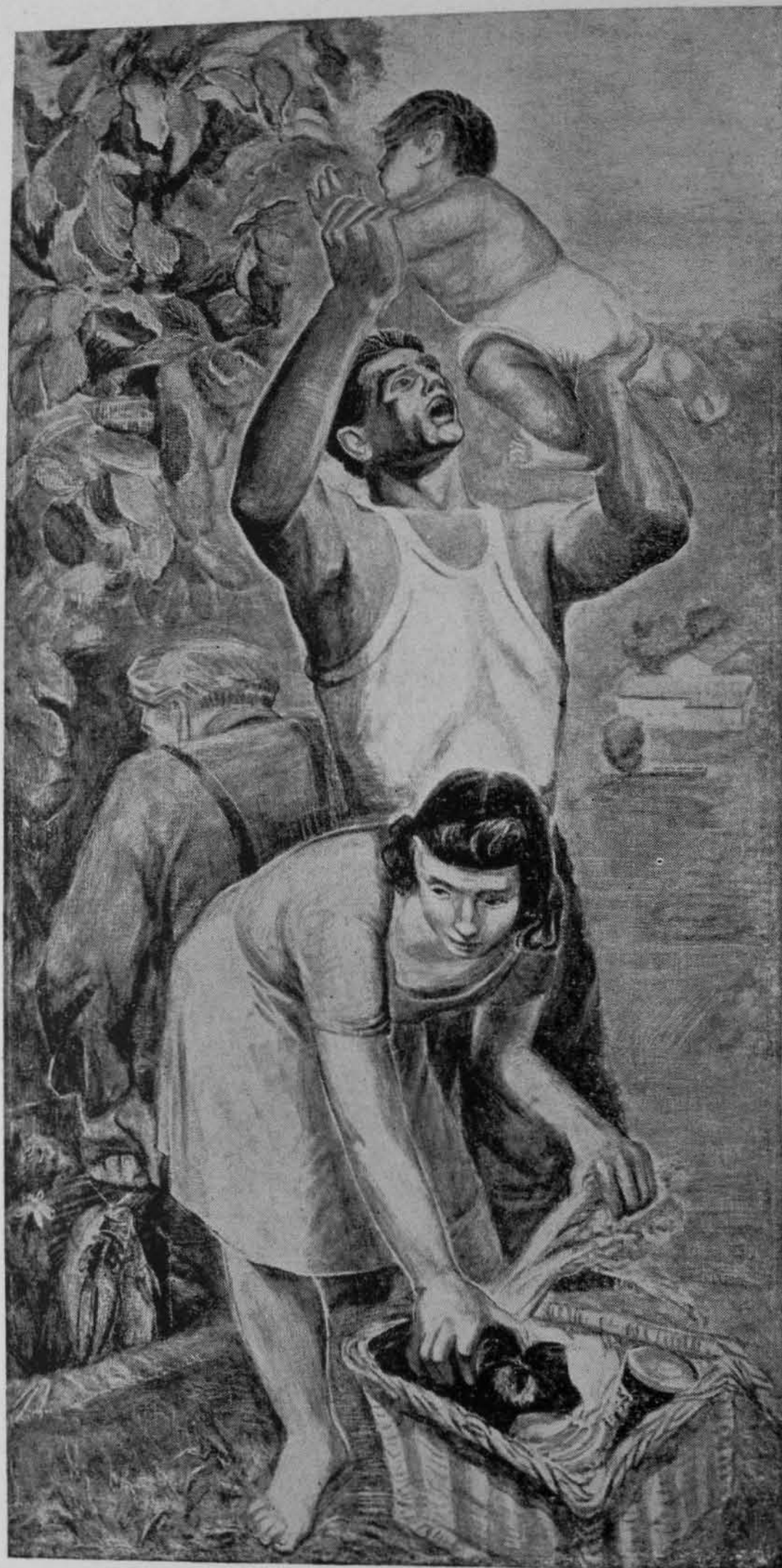
CHARLES K. REDFERN

CRESSON SCHOLAR IN PAINTING 1941



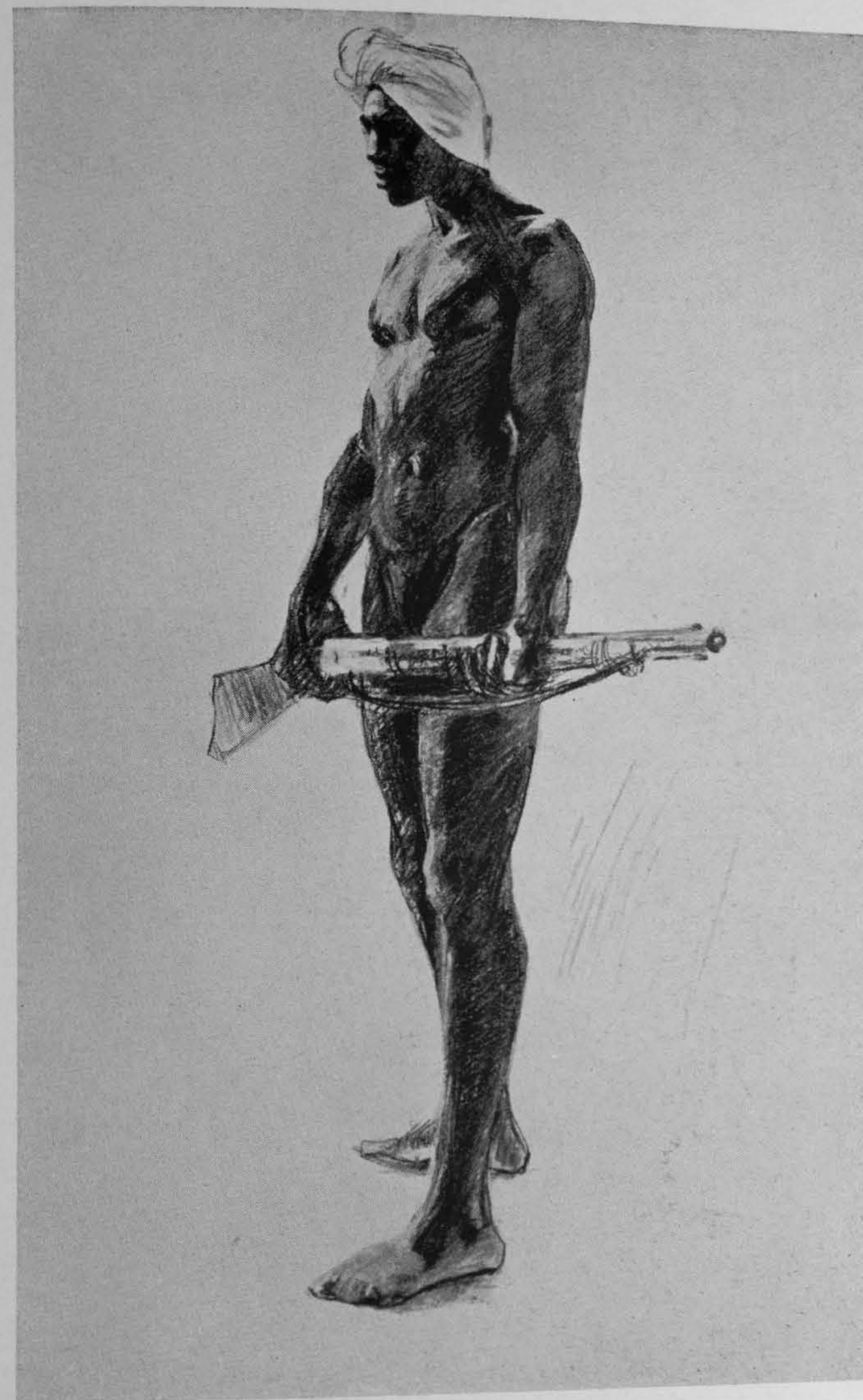
ROBERT SPURGEON
CRESSON SCHOLARSHIP IN SCULPTURE 1941

HONORABLE MENTION STIMSON COMPETITION 1939
HONORABLE MENTION STEWARDSON COMPETITION 1940
THE STIMSON PRIZE 1940



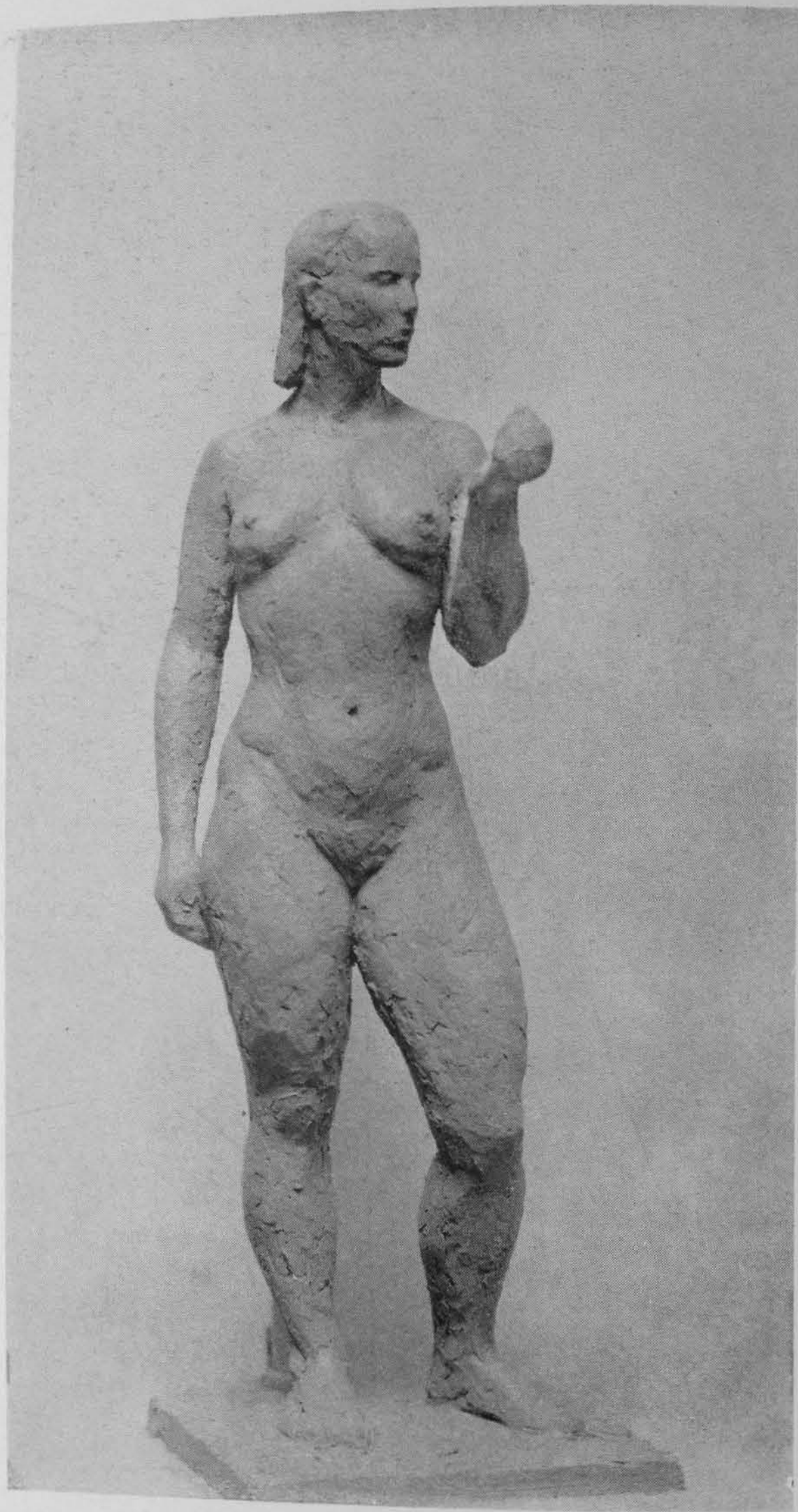
JEAN CRAIG
30

CRESSON SCHOLAR IN MURAL DECORATION 1941



JAMES C. McKELL, JR.

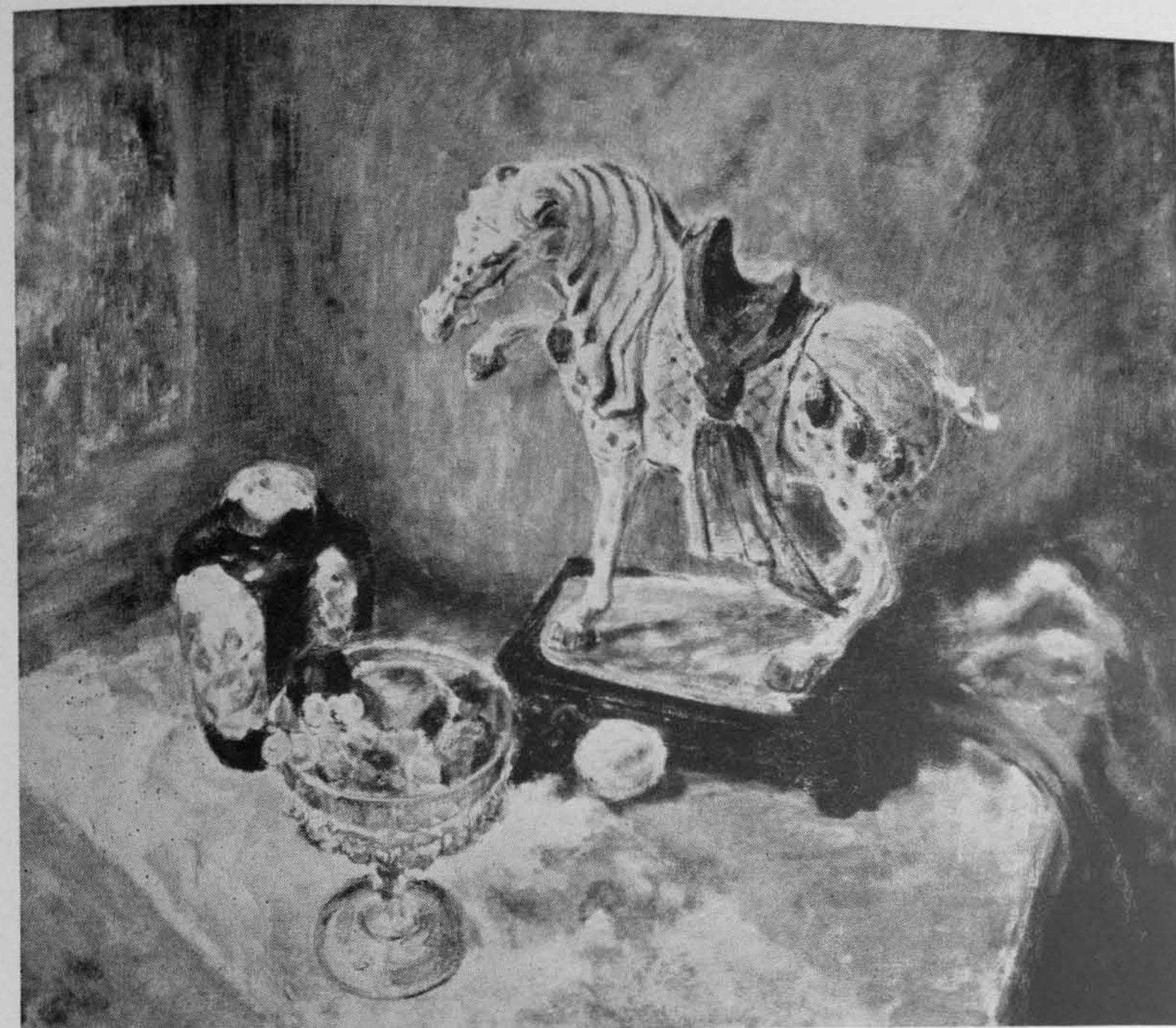
CRESSON SCHOLAR IN ILLUSTRATION 1941
31



ALICE C. FRAYER

32

THE STEWARDSON PRIZE 1941



JOHN HERITAGE WRIGHT

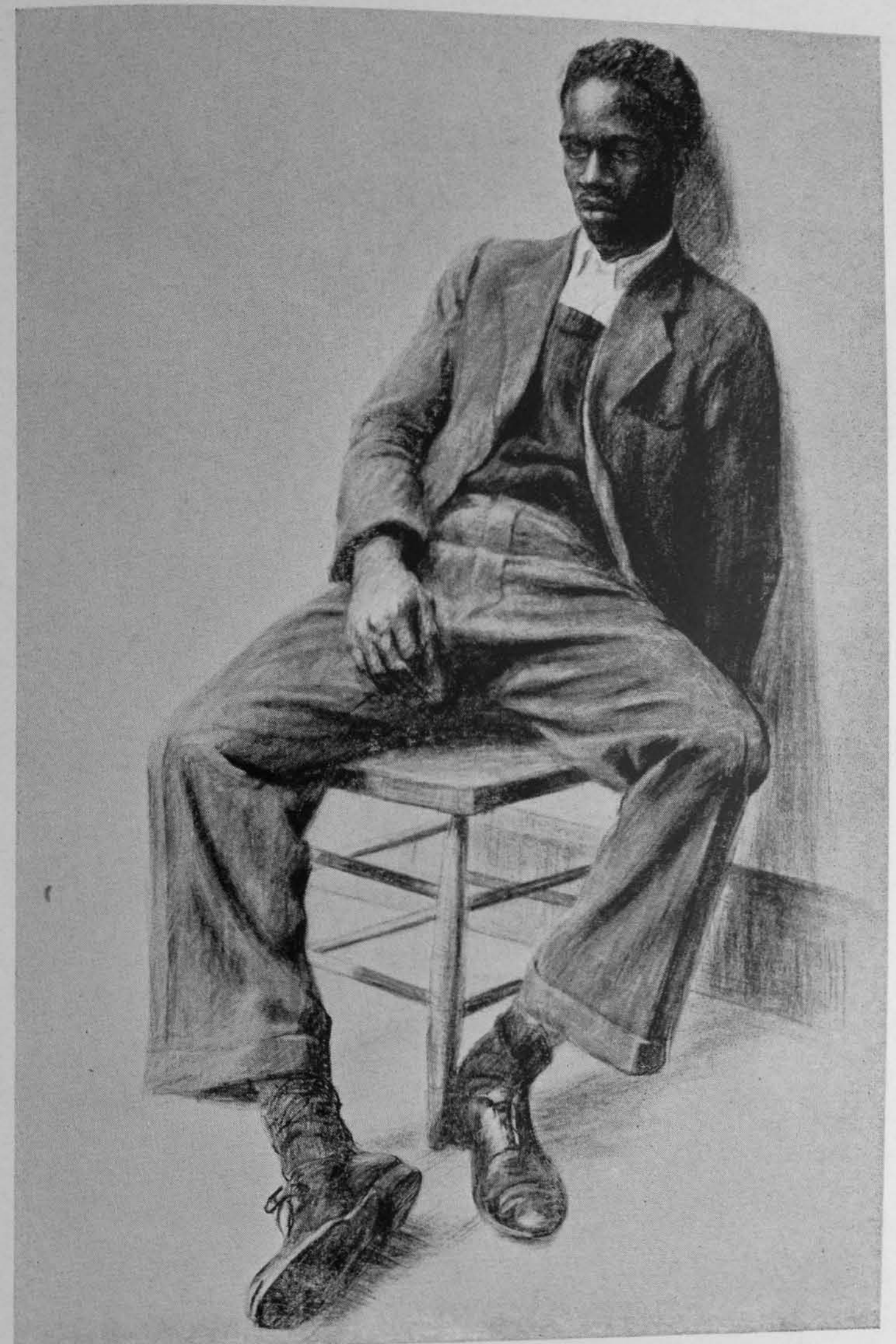
CRESSON SCHOLAR IN PAINTING 1941

33



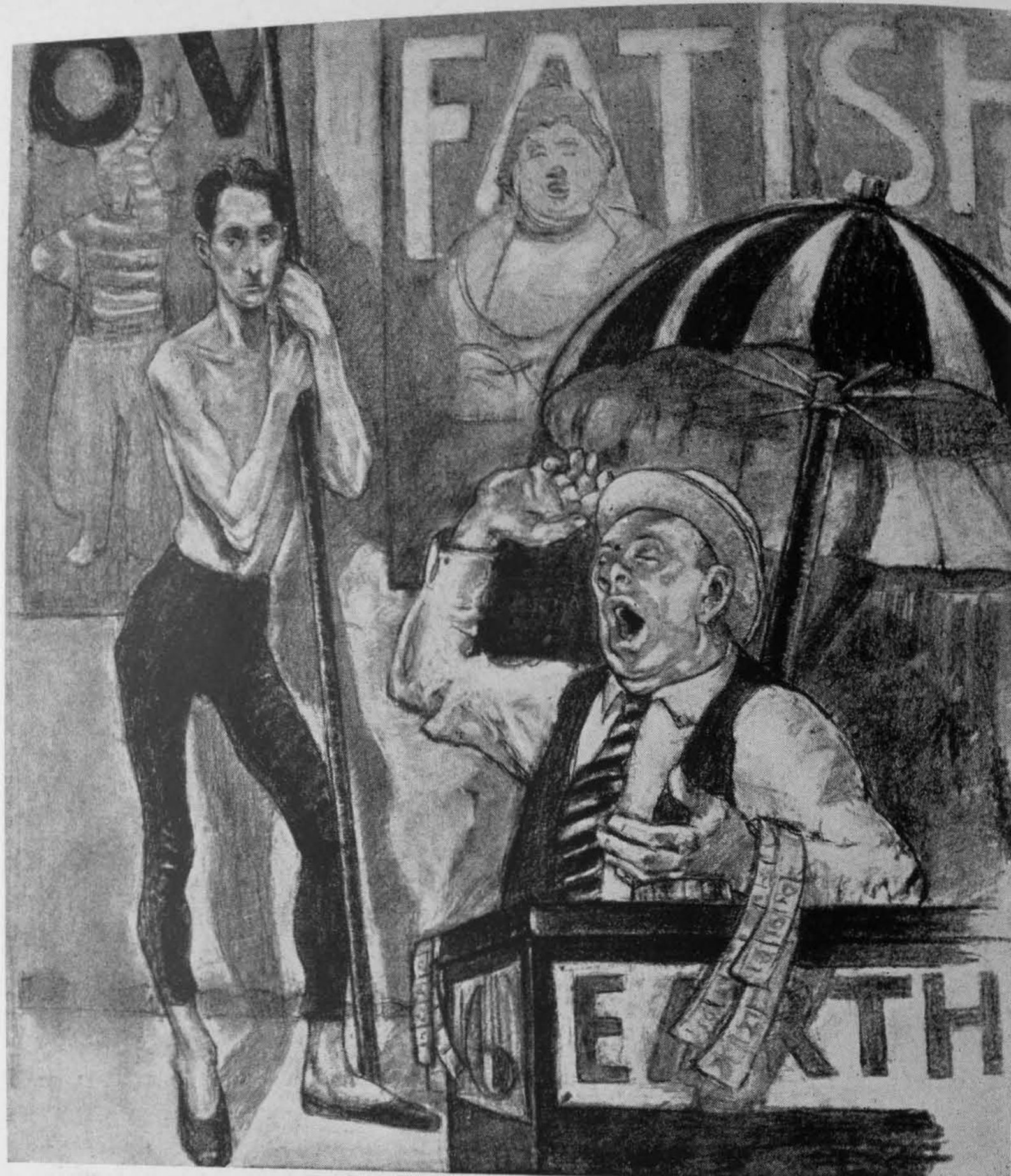
WILLIAM H. M. TALBOT
34

HONORABLE MENTION STEWARDSON COMPETITION 1936
CRESSON SCHOLAR IN SCULPTURE 1941



HARRIET ROSE

CRESSON SCHOLAR IN ILLUSTRATION 1941



RICHARD LESSERAUX
36

CRESSON SCHOLAR IN ILLUSTRATION 1941



WALTON BATTERSHALL

CRESSON SCHOLAR IN PAINTING 1941
37



JOHN M. KUNIK

CRESSON SCHOLAR IN ILLUSTRATION 1941



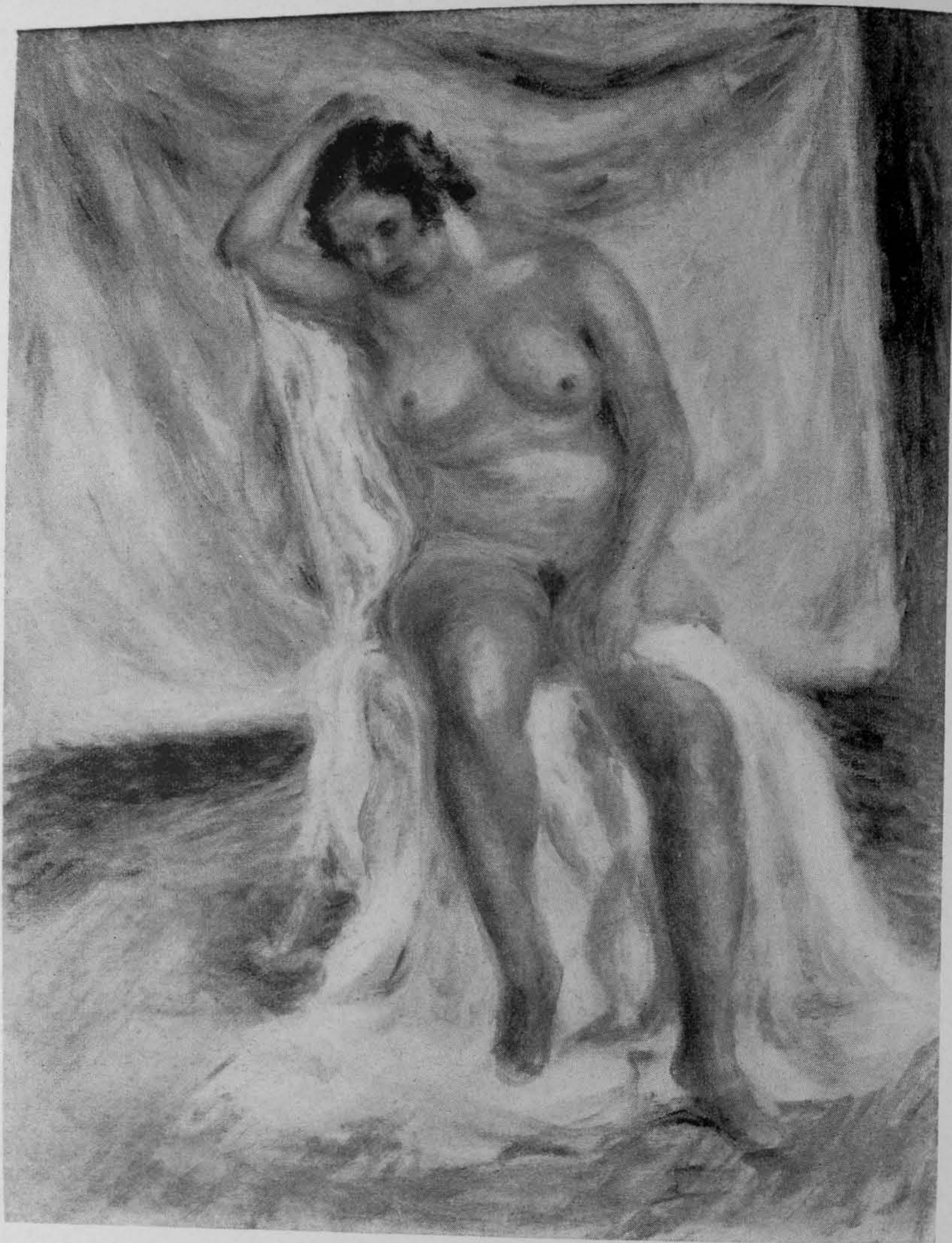
RICHARD BALDWIN

CRESSON SCHOLAR IN ILLUSTRATION 1941



ROBERT SPURGEON

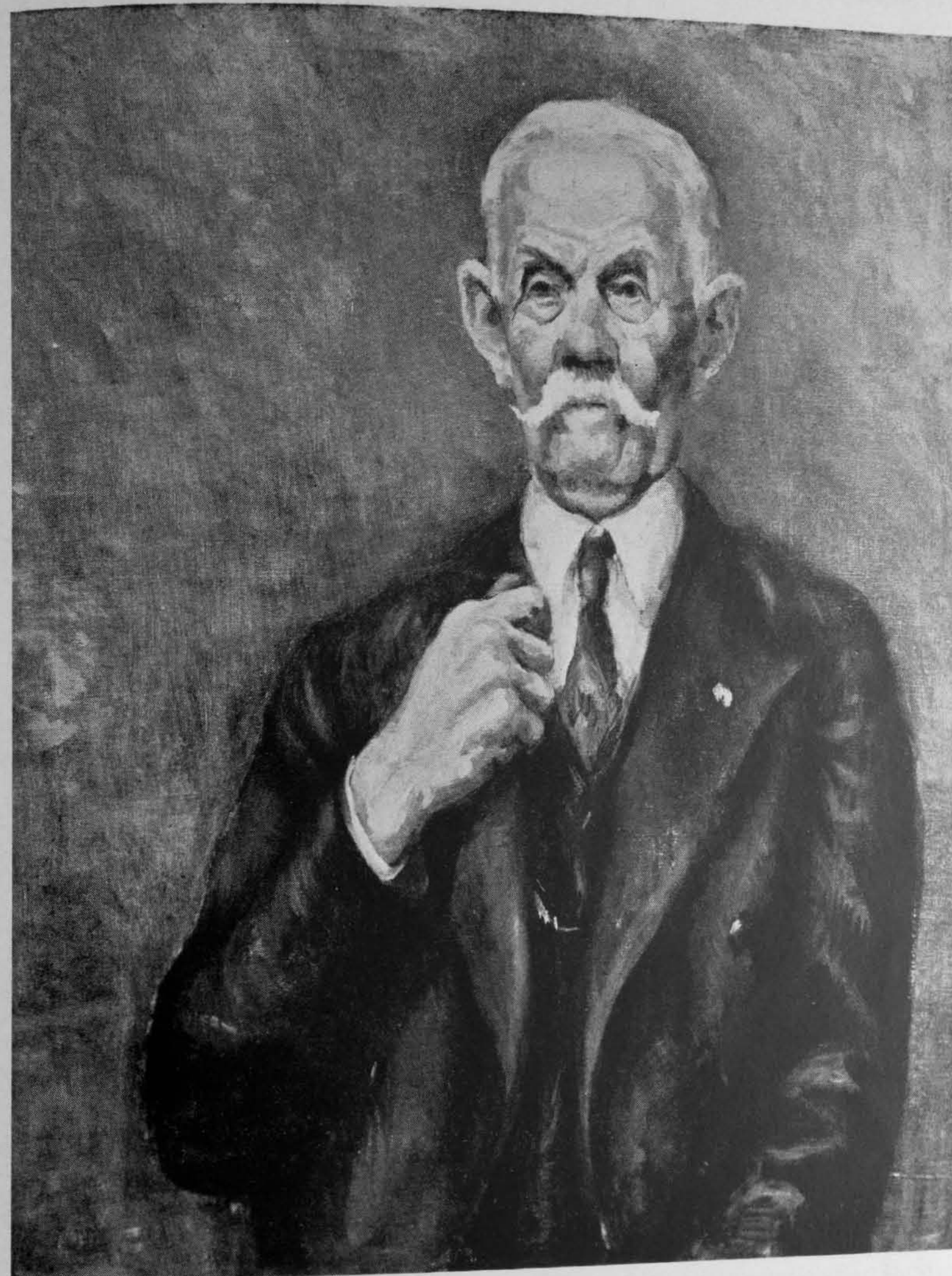
THE STIMSON PRIZE 1940



ROBERT MORRIS HERVEY

40

CRESSON SCHOLAR IN PAINTING 1941



JAMES M. WALDRON

CRESSON SCHOLAR IN PAINTING 1941

41

SCHOLARSHIPS AND PRIZES

FREE TUITION SCHOLARSHIPS. Free tuition scholarships are available to returning students whose financial obligations have been met in full, for at least two terms. These scholarships are solely for the purpose of financially assisting those who would otherwise be unable to pursue their study of art. Seventeen full free tuition scholarships and thirteen half tuition scholarships were awarded in May, 1941, for the Winter School year 1941-42.

A major number of these are given each year by George D. Widener in memory of his father and mother, George D. Widener and Mrs. Alexander Hamilton Rice. Others are made available through bequests of various friends of the Academy to be used for scholarship aid: The Louise Harrison Memorial Scholarships given by Thomas S. Harrison in memory of his wife; The Mary R. Burton Scholarship; The Sarah Kaighn Cooper Memorial Scholarship through the generosity of Mrs. George K. Johnson; and the Elizabeth H. Thomas Memorial Scholarship.

Application may be made in the Spring of each year. These scholarships are awarded by the Board of Directors upon the recommendation of the Committee on Instruction and the Faculty. Applicants must fill in a prepared form and submit it together with not more than four examples of their work to the Curator before the stated meeting of the Faculty for May, 1942. These applications must be accompanied by a letter addressed to the Committee on Instruction stating the necessity for requesting free tuition.

At the discretion of the management, and at times when there is a particular demand for such help, certain of these scholarships may be granted as half scholarships.

THE WILLIAM EMLÉN CRESSON MEMORIAL TRAVELING SCHOLARSHIPS

By the liberal provisions of the wills of Emlén Cresson and Priscilla P., his wife, a Fund has been created as a memorial to their deceased son, William Emlén Cresson, Academician, the income of which is to be applied by The Pennsylvania Academy of the Fine Arts in sending pupils of merit to Europe.

The award of a Cresson Traveling Scholarship credits each student with \$1100.00; \$900.00 of which is to be used for a Summer of travel and traveling expenses, and the remaining \$200.00 pays for tuition in the ensuing two terms immediately following at the Academy.

An award is not to be regarded as a certificate of proficiency. The winners should consider rather, that their industry and promise have won for them the opportunity to introduce into their period of schooling this inspirational and broadening incident. Each recipient is required to return to the Academy for further study and the financial arrangement is thus planned to insure this program.

The awards are divided among all departments of study and are allotted as to standard of work as one factor, and the number of contestants proportionally from each department as the other factor.

The awards are made by the Board of Directors through its Committee on Instruction, upon the recommendation of the Faculty. **Thirteen students were awarded Cresson Traveling Scholarships in 1941.** The student illustrations in this catalogue are selected from the work of the winners in the 1941 competition.

In the case of exceptional merit and when a very decided improvement is evident a student may, through the same authority, receive the award a second time. Competition for a second scholarship must be entered during the year succeeding the first award, unless otherwise ruled or a satisfactory excuse be accepted by the Committee on Instruction.

RULES GOVERNING THE CRESSON COMPETITION. Every student thirty-five years of age or younger is eligible for competition for a Cresson Traveling Scholarship when they each have an aggregate of 96 Academy school weeks to their credit, which must have been accumulated within five (5) years of the date of competition. The final 32 weeks (two terms) must be spent in the Winter School of the Academy and must be within the school year of competition. Time spent in the Summer School of the Academy is counted (provided certain requirements have been fulfilled) in the aggregate of the first 64 weeks.

Every student must have a complete and unbroken registration record over the time included in computing eligibility (see "Registration of Work"). They must also have completed satisfactorily their work in Perspective (two terms). Delinquencies due to absence for illness or other causes must be satisfactorily explained in writing to the Curator for excuse and all financial obligations must be fully paid.

All students entering the competition are required to sign at the Curator's office in order to signify their intention before the first day of December in the school year of competition.

All work submitted in competition must be that which has been done in the Academy classes or for Academy registration and has received criticism from a member or members of the Faculty. It must also be work completed within the last 32 weeks of the Winter School or the 14 weeks immediately preceding in the Summer School. Either the stamp from monthly registration or one by special arrangement at the Curator's office must be upon each work exhibited.

All competitors are unrestricted as to the amount and variety of work they submit in the competition groups, provided they do not exceed the space allotted to them, but each Painter's group must include a landscape.

Paintings, Drawings, and Illustrations exhibited in the Painting or Illustration groups must not exceed 36 inches in either dimension, and must be exhibited unframed and unglazed. If tape is used to trim unsightly edges of canvases it may be used to give order rather than enhance and must not encroach upon the face of the canvas.

A change from the European travel stipulation has been granted for the duration of the war by a special decree of the Orphans Court, dated April 26th, 1940. Winners in the competition of May, 1942, will be required to use the traveling money for travel or study in the Western Hemisphere on schedules and itineraries checked and approved by the Academy, unless in the judgment of the Academy traveling conditions in Europe are desirable and safe. Each student awarded a First Cresson Traveling Scholarship will present a plan which covers a specified period of days and a complete financial and itinerary report as carried out will be filed in the Office of the Curator before the first day of November following the award. Each student awarded a Second Cresson Traveling Scholarship is granted the privilege of using the credit for travel (\$900.00) any time within two years and four months of the receipt of the award. The \$200.00 credit for tuition, however, must be used within the year following the award. The financial and itinerary report as approved by the Academy and as carried out, must be filed in the Curator's office within six weeks of the completion of the travel period.

In the event that in the judgment of the Academy **conditions for European travel are desirable** and safe, each student awarded a First Cresson Traveling Scholarship must leave for Europe on or before June 15th of the year of award; otherwise the scholarship is revoked. A period of at least 90 days in Europe must be accounted for in the financial and itinerary report which is required for filing in the office of the Curator before the first day of November following the award. Each student awarded a Second Cresson Traveling Scholarship is granted the privilege of using the credit for travel (\$900.00) any time within two years and four months of the receipt of the award. The \$200.00 credit for tuition, however, must be used within the year following the award. The financial and itinerary report covering the period of at least 90 days in Europe is also obligatory upon them and must be filed at the Curator's office within six weeks of their return to America.

THE LEWIS S. WARE MEMORIAL SCHOLARSHIP. The Lewis S. Ware Memorial Scholarship, in accordance with the will of the Testator, provides a European Traveling Scholarship in amount and regulations similar to those of Cresson Scholarships of that year.

This scholarship will be available at intervals of possibly three or four years and is to be awarded when available by the President with the advice of the Faculty to a student of outstanding merit who is not receiving a Cresson Scholarship that year. This Scholarship was last awarded in May, 1938.

COLLABORATIVE SCHOLARSHIPS. Realizing the growing interest in and the demand for well-trained Mural Decorators and Sculptors acquainted with the problems of their co-artists the architects, this scholarship is designed particularly to encourage talented students toward competent and thorough knowledge in these fields.

Two terms of free tuition in the Winter School are, therefore, to be awarded to each painter or painters and sculptor or sculptors whose team or teams place first, second or third in the Association of the Alumni of the American Academy in Rome judgment; provided, that in the acceptance of such scholarship, the students will major in their respective departments (Mural Decoration and Sculpture), and shall use this tuition credit in the school year directly following after that of the award.

THE CHARLES TOPPAN PRIZES. The Charles Toppan Prizes for 1942 are: First Prize, \$300.00; Second Prize, \$200.00; and two honorable mentions of \$100.00 each.

These prizes were established in 1881 by the gift of Mrs. Charles Toppan, Miss Harriette R. Toppan, and Mr. Robert N. Toppan.

The prizes are awarded only to students who have previously received and used a Cresson Scholarship. Competitors who fulfill all of the requirements for a Second Cresson Traveling Scholarship will, at the same time, be considered eligible to compete for a Toppan Prize. Competitors who are not in Competition for a Second Cresson Traveling Scholarship are required to register certain work each month, and will arrange individually with the Curator for the requirements in the respective departments of Painting, Illustration, Sculpture and Mural Decoration.

Any student having received one Toppan prize is debarred from receiving another Toppan prize of the same or lower value.

The work submitted in competition must be an original painting, in oil or water color, the unaided work of the student without criticism. The subject for the paintings to be submitted will be announced Friday, November 14, 1941. All work in competition must be submitted without signature by Monday, May 11, 1942, 12 o'clock noon. No student may submit more than one example. Work submitted must not measure less than twelve inches nor more than thirty-six inches in either dimension, and must not be framed or presented under glass, though paintings upon paper may be matted.

Canvases are numbered by the Curator, and a memorandum of the numbers and competitors' names is kept in a sealed envelope which is opened after the prize-winning canvases have been selected by the Committee on Instruction. According to the positively expressed terms of the gift, the drawing of the work submitted will receive first consideration.

The Committee on awards is not obliged to award prizes or honorable mentions if, in its opinion, the work submitted is not of sufficient merit to justify making the awards.

THE THOURON PRIZES. These awards were founded by the late Henry J. Thouron, a former Instructor in Composition.

A prize of \$50.00 and a prize of \$25.00 for compositions completed during the current season are offered, the first to be decided by the Faculty, the second by a vote of the students; and a prize of \$50.00 and a prize of \$25.00 both to be awarded by the Instructor of the class.

A competitor is not eligible a second time for the same prize, and cannot receive more than one award the same season.

The Committee on awards is not obliged to award prizes or honorable mentions if, in its opinion, the work submitted is not of sufficient merit to justify making the awards.

THE EDMUND STEWARDSON PRIZE. The Edmund Stewardson Prize of One Hundred Dollars in the Department of Sculpture will be awarded for the 42nd time at the close of the school year.

This is an annual prize, competed for by present students of the Academy with such pupils of other art schools as may be approved by the Committee on Instruction.

The subject for the competition is a full-length figure from Life in the round. Studies must not be less than two feet six inches in height, and not more than three feet in height, and must be made within eighteen hours, during three consecutive days, in six sessions of three hours each.

No one except the competitors are admitted to the competition room at any time during the days of the competition, and no one except the members of the Jury are present during the judging of the studies.

Each competitor draws a number by lot. This number determines the competitor's position in the competition room and a corresponding number is placed upon an envelope which contains the competitor's name and is deposited sealed, with the Secretary of the Academy. Upon completion of the work the competitor places a corresponding number upon the study to be submitted to the Jury of Award.

The Jury of Award consists of three professional sculptors, having no official connection with the Academy, or any other schools whose pupils may have taken part in the competition. When the successful number has been announced by the chairman of the Jury, the Secretary, in the presence of one or more of the officials of the Academy, opens the envelope bearing that number and announces the name of the successful competitor. If no study be satisfactory to the Jury, the prize may, at their discretion, be withheld. When

no award is made, the amount of the prize may, at the discretion of the Board of Directors, be added to the principal of the prize fund or distributed with future prizes.

The clay models offered in competition must be kept standing in good condition until otherwise ordered and figures cast by the Academy become its property.

The Jury of Award judging the competition held during the second term of the school year 1940-41 consisted of C. Paul Jennewein, Heinz Warneke and Gaetano Cecere.

THE STIMSON PRIZE. This prize was established in memory of Emma Burnham Stimson and was created for the award each year of a prize in sculpture of \$100.00 for the best work done by the students in regular course of the class.

The contest is open to students who have been registered for three terms and who are members of the Life Modeling Classes, but is not open to former students who work in the class by special permission. Time spent at work in the Sculpture Classes at the Chester Springs Country School will be counted up to two of the three terms.

The subject for competition is a full-length figure from life, in the round, not less than two feet six inches in height, and must be made during class hours as a part of the regular work in the class.

The work must be submitted anonymously to a jury appointed by the Committee on Instruction of the Board of Directors. The Jury must not include any instructor in the School.

The Committee on awards is not obliged to award prizes or honorable mentions if, in its opinion, the work submitted is not of sufficient merit to justify making the awards.

The Jury of Award judging the competition held during the first term of the school year 1940-41 consisted of Dorothea Greenbaum, Carl Schmitz and Joseph Renier.

THE PACKARD PRIZES. From the income of the John H. Packard Fund, established by the children of the late John H. Packard, M.D., for many years chairman of the Academy's Committee on Instruction, annual prizes of \$30.00 and \$20.00 are awarded for the best and second best groups of original studies and \$20.00 are awarded for the best and second best groups of original studies made from living animals in the Zoological Garden. These prizes are open to all students of the Academy who have registered for both terms of the school year. A student having once received a prize becomes ineligible to receive the same prize the second time.

The Committee on awards is not obliged to award prizes or honorable mentions if, in its opinion, the work submitted is not of sufficient merit to justify making the awards.

THE RAMBORGER PRIZE. From the income of a fund established by the late William K. Ramborger, Esq., as a memorial to his sister, Aspasia Eckert Ramborger, who for some years was a student of the Academy, an annual prize of \$25.00 is awarded for the best line drawing in black and white of a head from life by a pupil of the Academy who has not been under instruction over two years, but who has been registered in the Academy for both terms of the current school year. Each competitor may submit one unmounted drawing on white paper 19 by 25 inches in size. Having once received an award, a student becomes thereafter ineligible to compete again.

The Committee on awards is not obliged to award prizes or honorable mentions if, in its opinion, the work submitted is not of sufficient merit to justify making the awards.

FREE TUITION SCHOLARSHIP and PRIZES for the HIGHER SCHOOLS OF PHILADELPHIA AND VICINITY. (Students graduated by High Schools or Preparatory Schools are ineligible to compete for these awards.) The Directors of The Pennsylvania Academy of the Fine Arts have established a Free Tuition Scholarship Competition among the **Senior** students of the Higher Schools of Philadelphia and vicinity.

The First Prize will consist of a Free Tuition Scholarship in the Academy's Winter School, representing the \$200.00 tuition for two terms in the Winter Session directly following the Award. A second and third prize of \$25.00 and \$15.00 respectively shall also be awarded.

The Art Instructor in each school has the privilege of nominating two students and the manner of the choosing of these two nominees is left entirely in the hands of each individual school. Three examples of work completed during the normal course of study in the senior year from each of the two nominees must be sent to the Secretary of The Pennsylvania Academy of the Fine Arts, Broad and Cherry Streets, not later than May 11, 1942. It is preferable that the individual student's work represent three different mediums and individual pieces of work must not exceed 19 x 25 inches in size, including mats if used. All entries must have the following information legibly written on the back: full name and home address of the competitor, name of the school in which the student is working, and the signature of the Principal of the school. Competitors must be regularly enrolled students of the schools from which they are competing. Exhibits may be called for at the Academy two weeks after the announcement of the awards.

The Faculty of the Academy will act as a Jury in awarding the Scholarship and Prizes.

The purpose of making these awards is to stimulate interest in drawing and the fine arts generally, to discover those who possess marked talents, and to offer them the advantages of study at the Academy. It is hoped that these awards and the stimulus they afford will lead to a closer sympathy between the art instruction in the city's high schools and the work of the Academy itself.

ADMISSION. Application blank, sent upon request, must be filled in and returned to the Curator with letters of character reference, a doctor's certificate of health, a full-length snapshot, and, on request, the applicant must submit examples of work in which the Faculty can find an apparent ability and promise and an evident sincerity of purpose, before the student may register. Admission is contingent upon complete satisfaction to Faculty and Management in each and every particular ~~as listed above~~ and is always subject to the unreserved right of dismissal. No student is eligible unless at least sixteen years of age and possessed of a completed high school education or its equivalent. The Committee on Instruction reserves the right to limit the number of students under any or all classifications.

FEES. Day School,

Tuition Fee per term	\$100.00
Matriculation Fee (paid only on entrance)	10.00
Locker Fee per term	1.00

Total, First Term	\$111.00
Tuition Fee, All Subsequent Terms	100.00
Locker Fee per term	1.00

Total Fees, First Year \$212.00
Students paying the Day School fees are entitled to all the privileges of the Evening School classes.

Evening School,

Tuition Fee for Single Term	\$25.00
Matriculation Fee (paid only on entrance)	5.00
Locker Fee per one term75

Total per Single Term, Evening School	\$30.75
---	---------

Part Time (for former P. A. F. A. students),

Tuition Fee per term (3 full day privileges per week)	\$50.00
Locker Fee for term	1.00

Total Fee per term	\$51.00
------------------------------	---------

These fees do not include the cost of any materials.

Summer School, See Summer School catalogue.

PAYMENT REGULATIONS. All fees are payable in advance and no deduction is made for late registration or for absence and no refund is made for any reason whatsoever.

Payment shall be made in cash or by check drawn to the order of The Pennsylvania Academy of the Fine Arts for the exact amount due.

Tuition fees are payable in two equal instalments. The first payment shall be made on or before the date of registration and the second payment on or before February 1st. Official credit or recommendation will not be granted by the Academy either to a student or a former student who has not completely satisfied, in the opinion of the management, his financial obligations to the Academy.

Non-payment of fees according to the announced dates, as stated above, shall prohibit such delinquent students from attendance in all classes, lectures, etc.

New registration cards shall be issued at the beginning of each term to students at the time of the payment of fees.

DORMITORIES. The Academy maintains in Philadelphia Day and Evening schools only, and assumes no responsibility for students beyond the limits of the school buildings. However, women students registering at the Academy are granted the privilege of living in the dormitory system conducted by the Moore Institute of Art, Science, and Industry and the Philadelphia School of Design for Women. The Academy can highly recommend these accommodations. For rates, etc., write to Miss Julia Owing at 1922 Race Street, Philadelphia.

CALENDAR. School year 1941-1942:

Registration	(on or after) September 15th.
First Term begins	September 29th.
First day of Pose for Stimson Competition in Sculpture	October 27th.
Private View of the Thirty-ninth Annual Water Color Exhibition and the Fortieth Annual Exhibition of Miniatures and the Student Exhibition from the Summer School at Chester Springs	November 1st.
Exhibition open to the Public	November 2nd to December 7th.
Stimson Prize judgment and award	November 21st.
Thanksgiving Day holiday	November 27th.
Christmas holiday	December 21st to January 5th.
Registration for Second Term	(on or after) January 20th.
Private view of The One Hundred and Thirty-seventh Annual Oil and Sculpture Exhibition	January 24th.
Exhibition open to the Public	January 25th to February 28th.
Second Term begins	February 2nd.
Washington's Birthday holiday	February 23rd.
Stewardson competition	March 23rd, 24th and 25th.
Stewardson Prize judgment and award	March 25th.
Easter holiday	April 10th and 11th.
Placement of Cresson Competition exhibits	May 11th to 15th.
Judgment for Toppan Prizes	May 11th.
Judgment for Cresson Scholarships, Thouron, Packard, Ramborger prizes	May 19th.
Exercises in Gallery F for the award of year prizes	May 20th.
Exhibition of Competitor's work	May 21st to June 7th.
Last day of Winter School	May 23rd.
No models are engaged to pose or criticism given for the last week of the Second Term except by special arrangement.	
Summer School, Chester Springs, Penna. (see Summer School catalogue for details)	June 8th to September 12th.

Day classes are held from nine to twelve and from one to four o'clock six days per week. Evening classes are held from seven to ten o'clock from Monday to Friday, inclusive. All exceptions are noted in the Calendar above.

GENERAL DATA

Students are expected to know how to **conduct** themselves upon principles of honor without specific rules.

The management of the school reserves the right, at any time and without advance notice, to **reject** or **dismiss** any student without recourse, for any reason which may seem sufficient in the opinion of the management, and without assigning any reason.

Students will not be called from the classrooms to answer personal or **telephone calls** except when, in the opinion of the Curator, there is an extreme emergency. Messages will be recorded and placed in the student's mail boxes.

The Academy assumes **no responsibility** concerning the property of students whether by loss or damage. A large steel **locker**, fitted with a combination lock, is provided for each student. Additional locker space may be arranged by the paying of extra fees.

Art **supplies** must be provided by the students. These supplies may be purchased at the school **store** at reasonable prices.

A **lunch room** and kitchen are provided for the use of those students who prefer to prepare their lunches and suppers at the school. No food is on sale in the Academy Buildings.

Visitors are admitted to the school between the hours of 4:00 and 5:00 P. M.

The Academy claims the **right to reproduce and retain**, temporarily, examples of students' work for use in exhibition held both in the Academy and for rotary or special exhibitions for which the school may arrange.

Application forms and any further information desired concerning the schools may be obtained by addressing Henry Hotz, Jr., Curator, Broad and Cherry Streets, Philadelphia, Winter School; Chester Springs, Pennsylvania, Summer School.

ANNUAL MEMBERSHIP IN THE PENNSYLVANIA ACADEMY OF THE FINE ARTS

Annual members are such persons as contribute \$10 annually for the maintenance of the Academy.

LIFE MEMBERSHIP

Life members are those who contribute the sum of \$100. Annual and life members are admitted to all the public exhibitions and lectures at the Academy, have a right to use its library, subject to the regulations of the institution, and receive an admission ticket. They have all the privileges of stockholders except the right to vote. Checks may be sent to Henry C. Gibson, Treasurer, at the Academy.

FORM OF BEQUEST

I give, devise and bequeath to "The Pennsylvania Academy of the Fine Arts"Dollars, in trust to invest and keep invested and apply the income only to the maintenance of the said Academy.

THE FELLOWSHIP OF THE PENNSYLVANIA ACADEMY OF THE FINE ARTS

The Object of the Fellowship is to foster a spirit of fraternity among the former and present students of The Pennsylvania Academy of the Fine Arts in the interests of Art. In addition to its many other activities the Fellowship also functions somewhat as an Alumni, through its members establishing a continuing link with the Academy when they no longer study there.

To Become a Member of the Fellowship it is necessary only to fill in the attached Application Blank and mail, or send, it to the Fellowship.

Dues for Resident Members are Four Dollars a year, and for Non-Resident Members (living more than fifty miles from Philadelphia) Two Dollars a year. Life Membership, Fifty Dollars. Bills for dues will be rendered by mail when due.

The Activities of the Fellowship include an Annual Exhibition of the works of members, a series of Evening Talks in the Academy Lecture Room on subjects of interest to Art Workers, and a variety of Get-Acquainted Gatherings, Dances, Group Outings, etc., to which admittance is free and of which advance notices are sent by mail to all members.

If you have been, or are, a student at The Pennsylvania Academy of the Fine Arts you are cordially invited to become a member of the Fellowship and to join with it in building up and preserving a united spirit of true fellowship in the interest of Art and in association with your old Academy.

APPLICATION FOR MEMBERSHIP IN The Fellowship of The Pennsylvania Academy of the Fine Arts

Name.....
Address.....
.....
Year of Studentship.....

